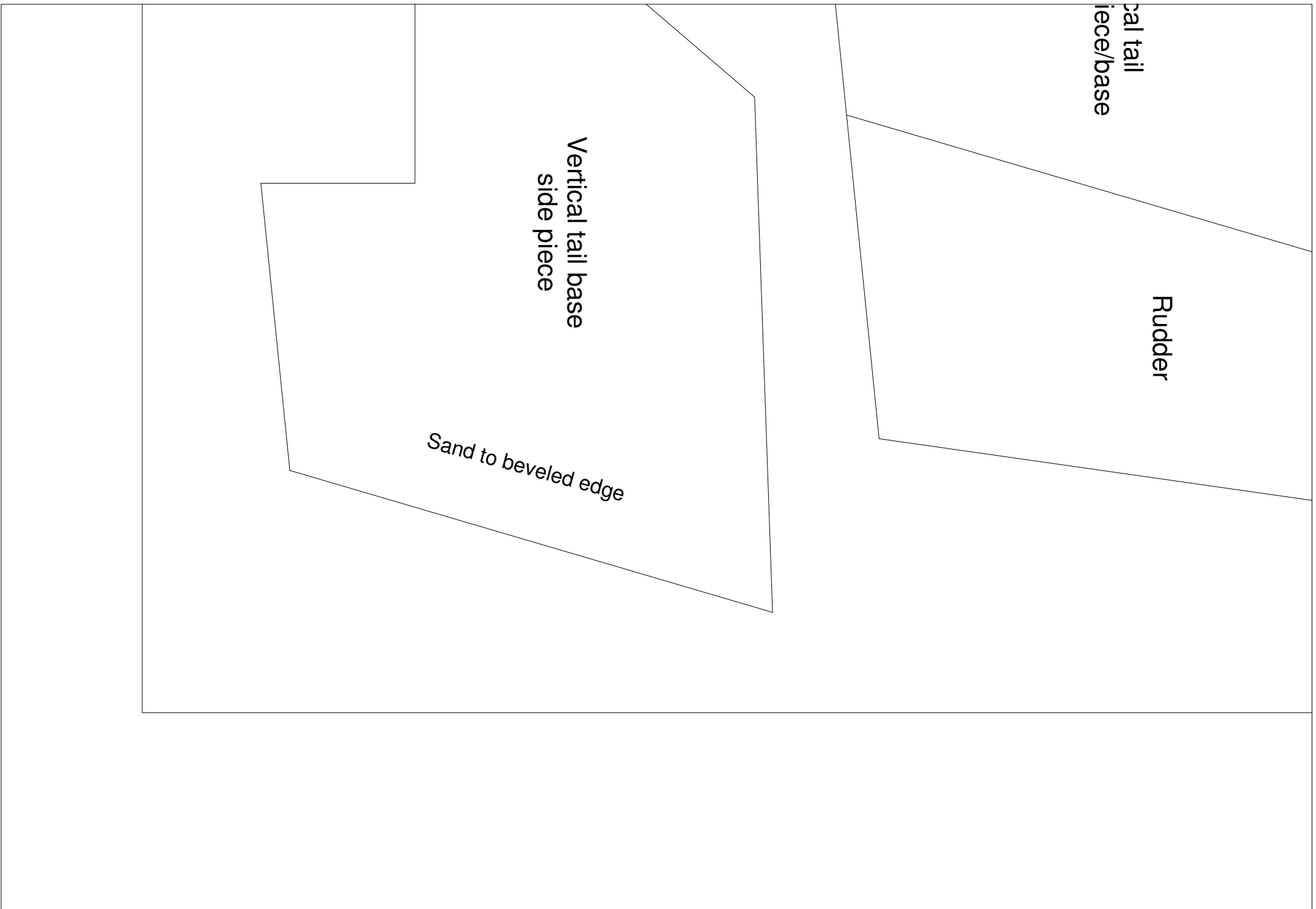


Vertical tail
piece/base

Rudder

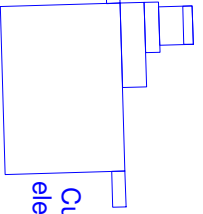
Vertical tail base
side piece

Sand to beveled edge



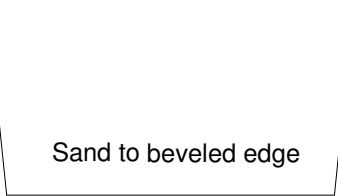


Vertical tail
upper piece

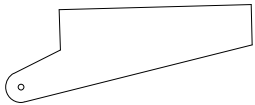


Cut slot to fit
elevator servo

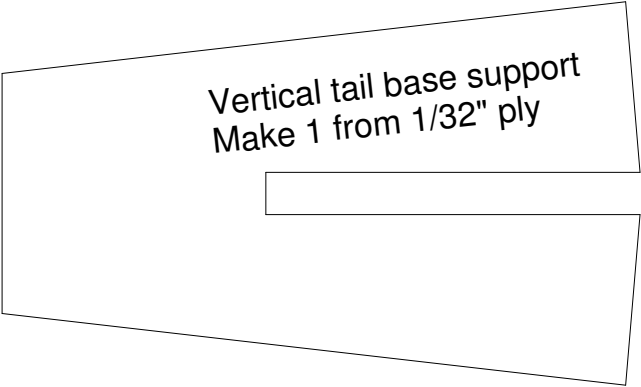




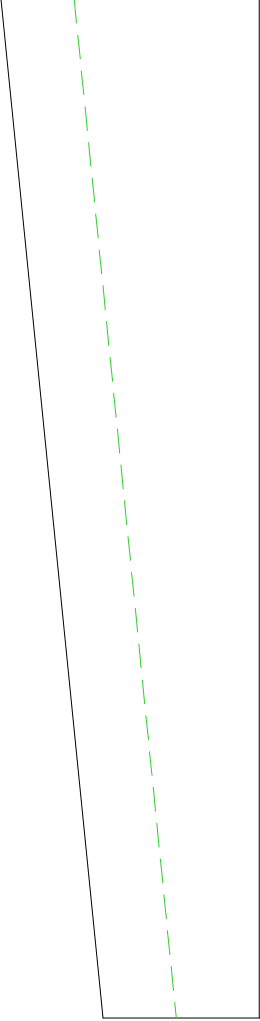
Sand to beveled edge



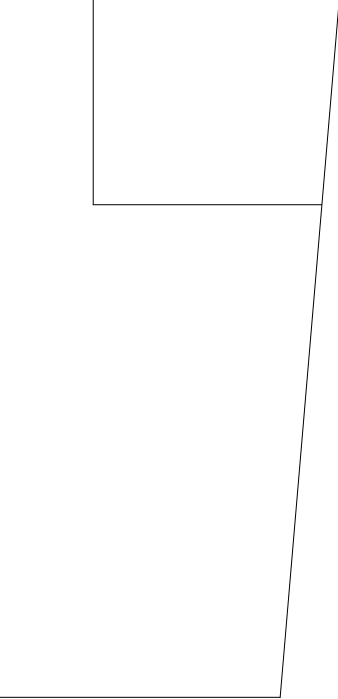
Control Horn
Make 2 from 1/32" ply



Vertical tail base support
Make 1 from 1/32" ply



Tip floats
Make 10



Canopy outline
for reference



Polaris

Designed by Steve Shumate
Copyright © 2008 All Rights Reserved

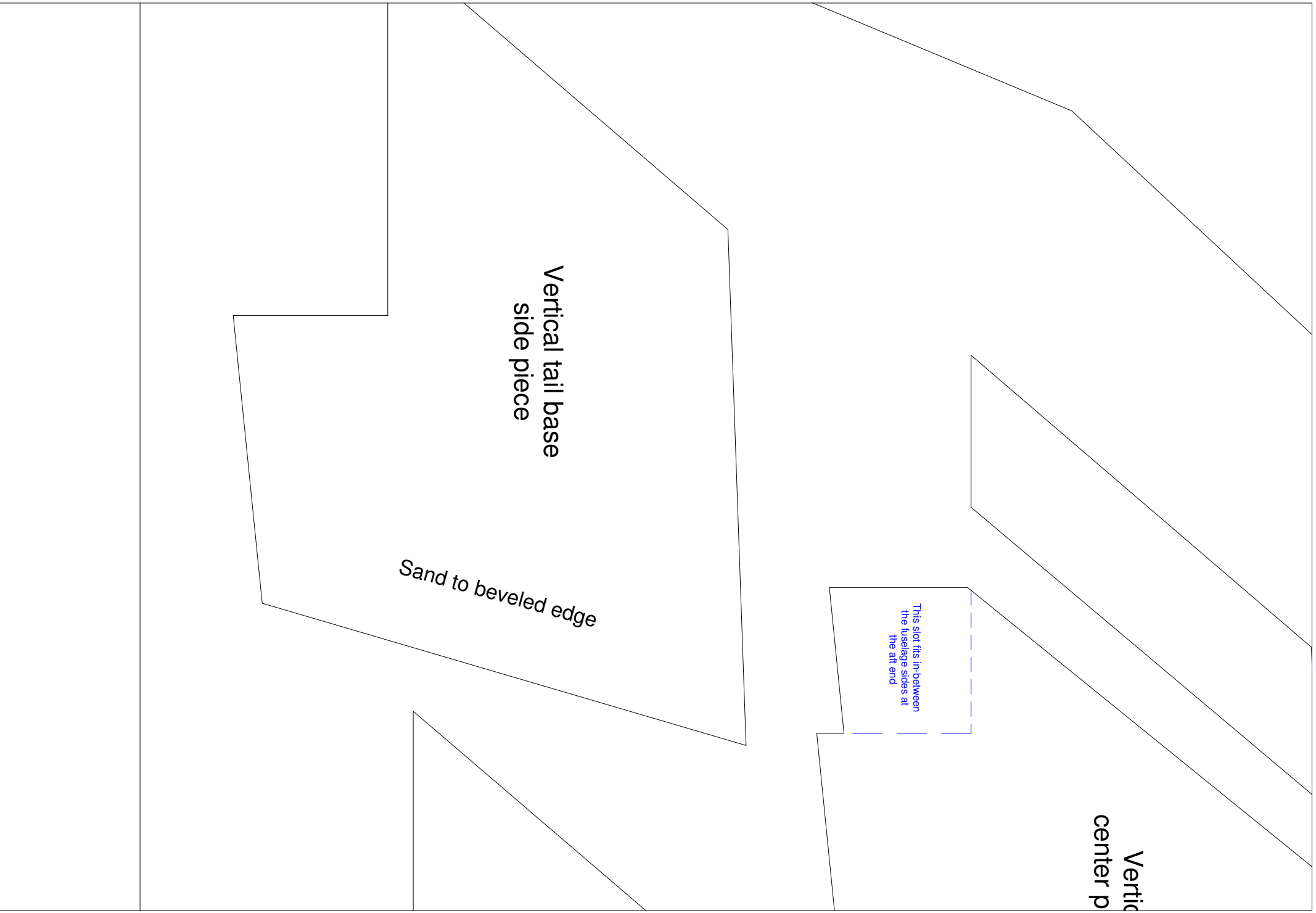
All parts made from 6 mm Depron or
BlueCore foam unless otherwise specified

Vertical tail base
side piece

Sand to beveled edge

This slot fits in-between
the fuselage sides at
the aft end

Vertical
center p

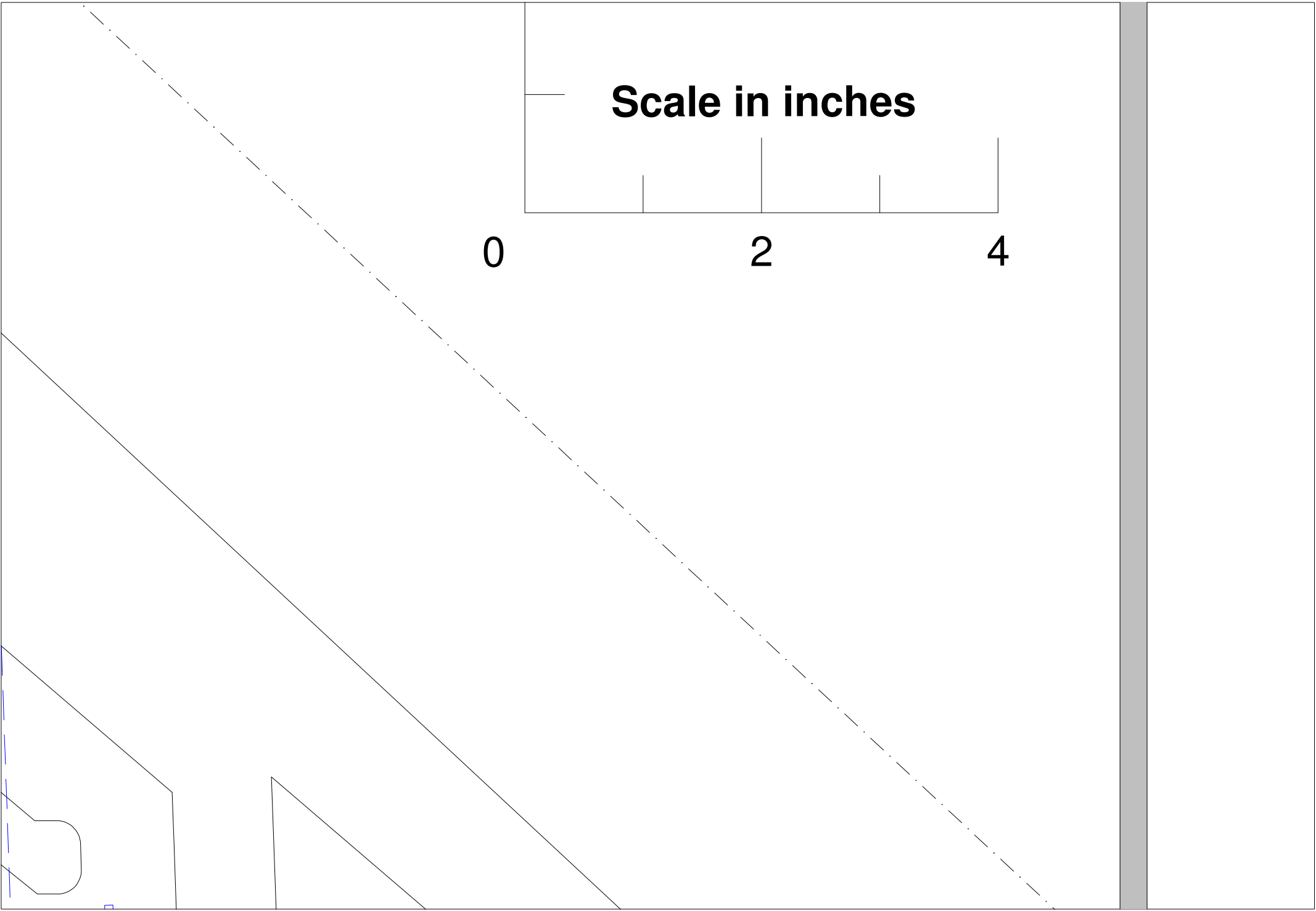


Scale in inches

0

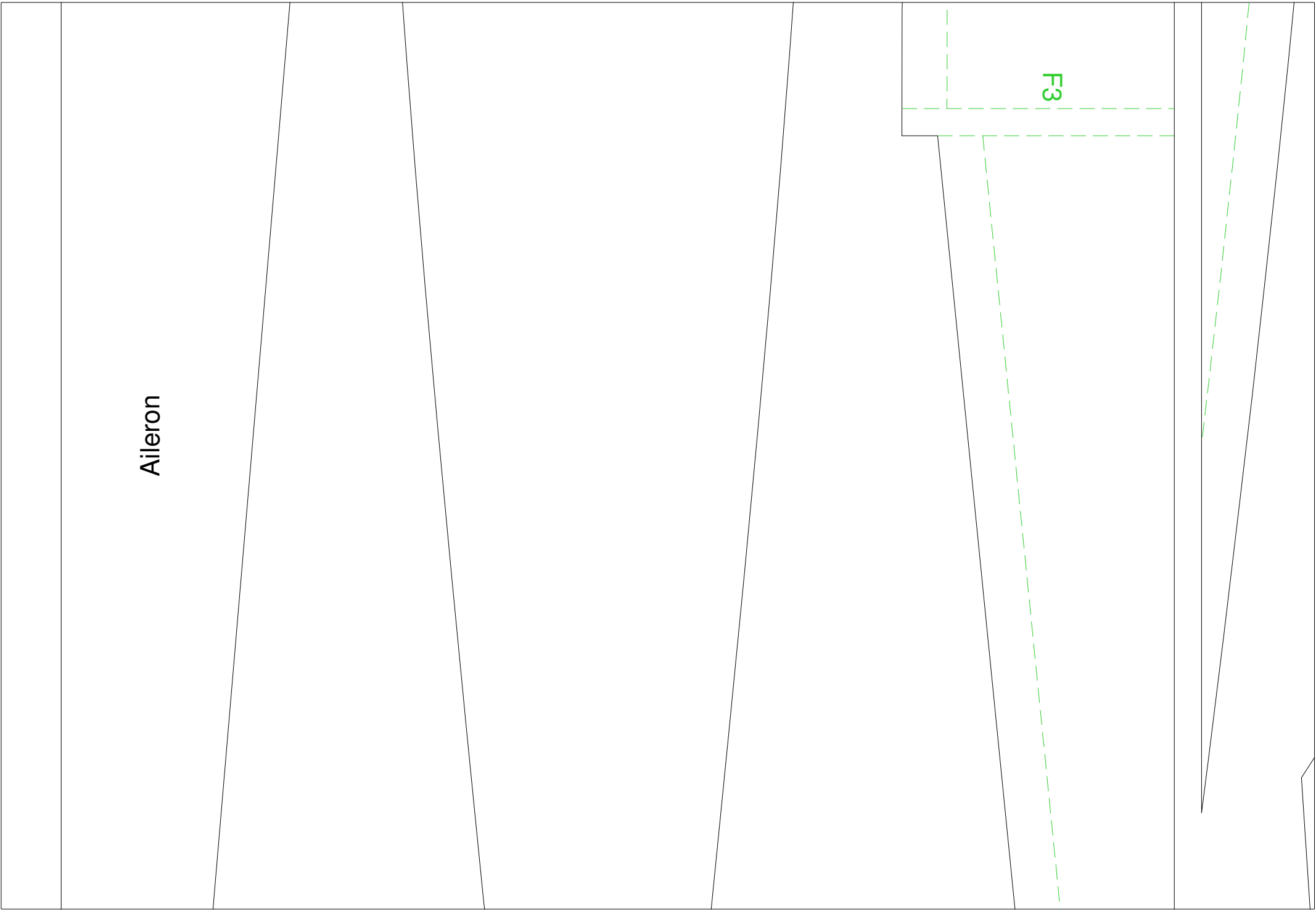
2

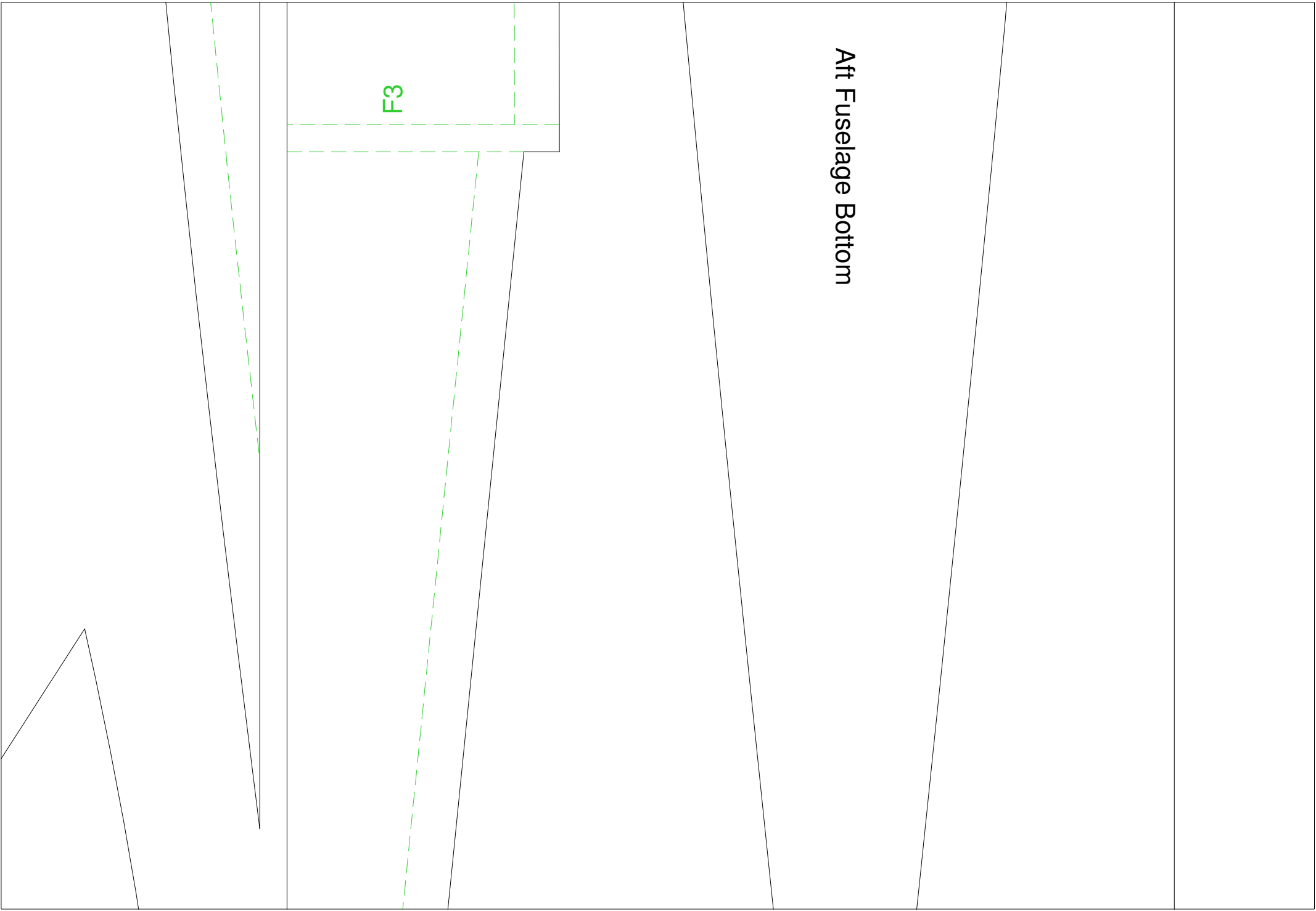
4



Aileron

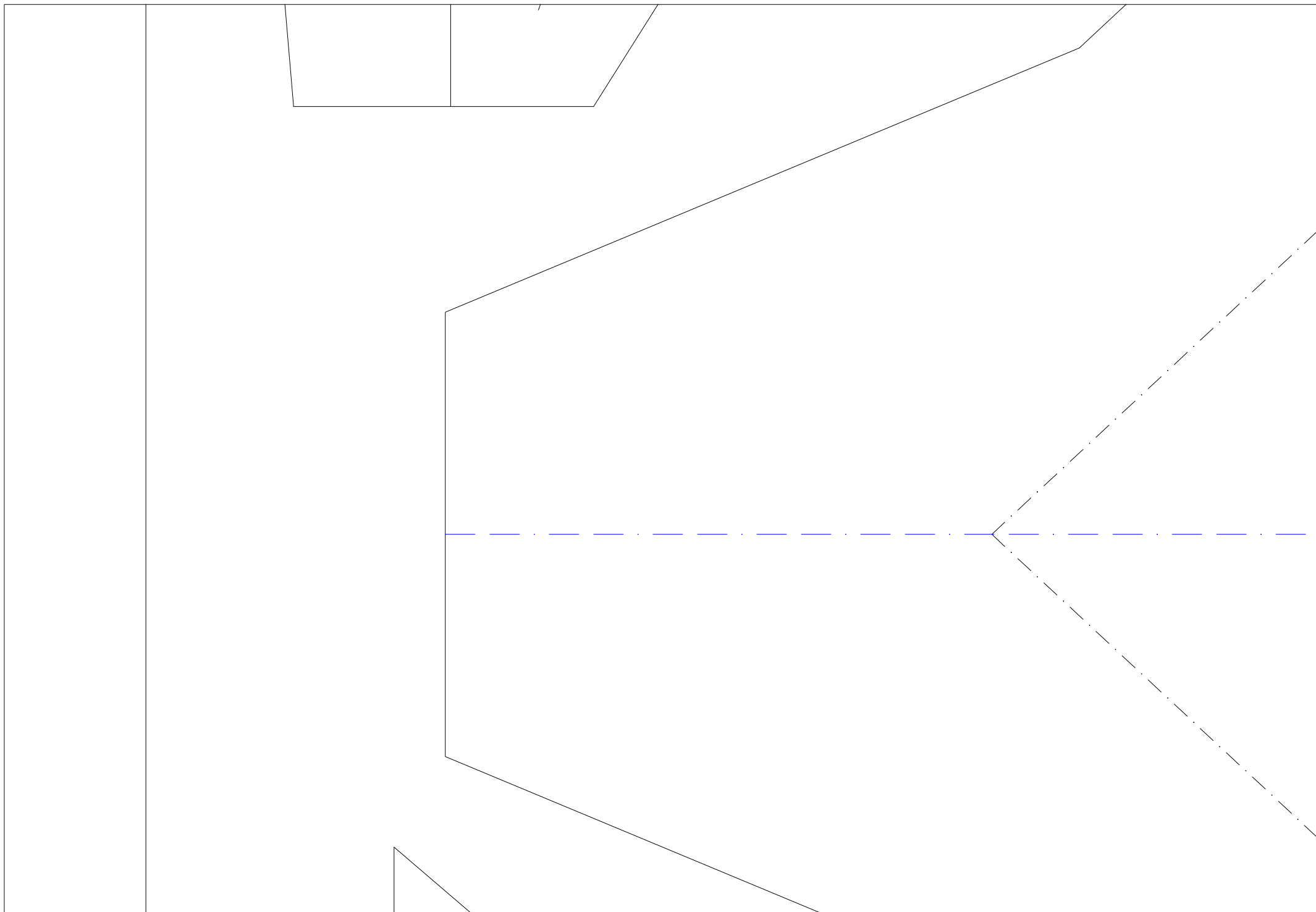
F3





F3

Aft Fuselage Bottom



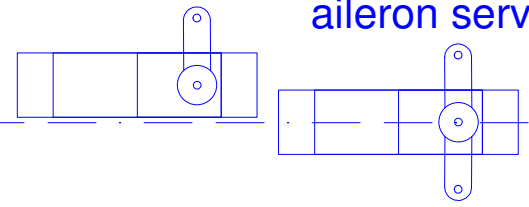
1/32" ply spar

Wing

0.22" dia x 28" carbon t

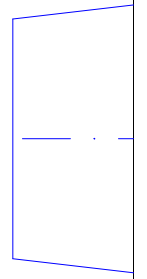
Cut slot for rudder servo

Cut slot for aileron servo



4

2



Install 0.38" foam strips here

F2

Right Fuselage Side

Install 0.38" foam here

Fuselage Top

Attach vertical tail
base support here

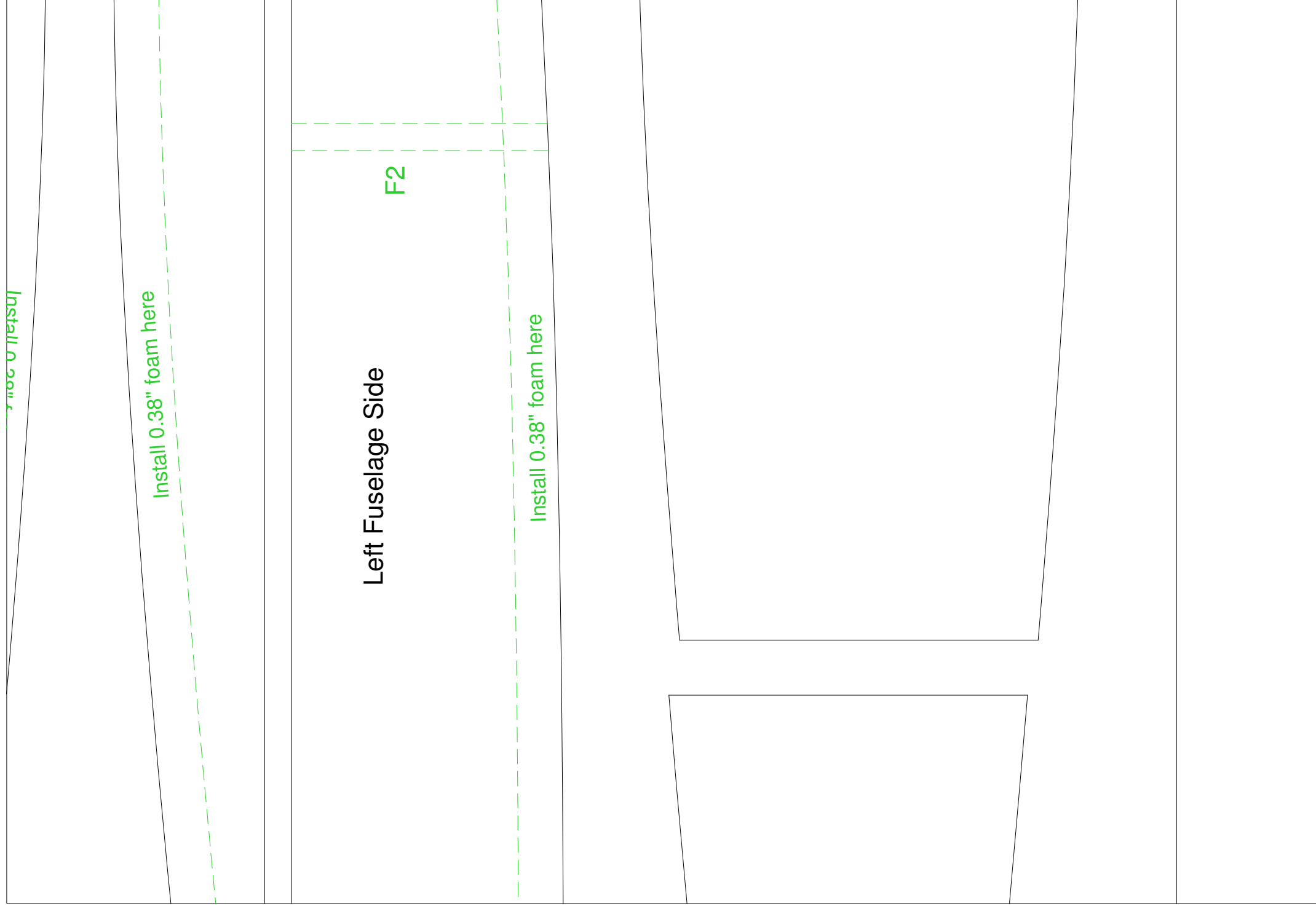
Install 0.38" foam here

Install 0.38" foam here

Left Fuselage Side

F2

Install 0.38" foam here

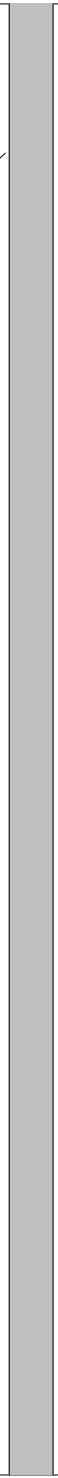




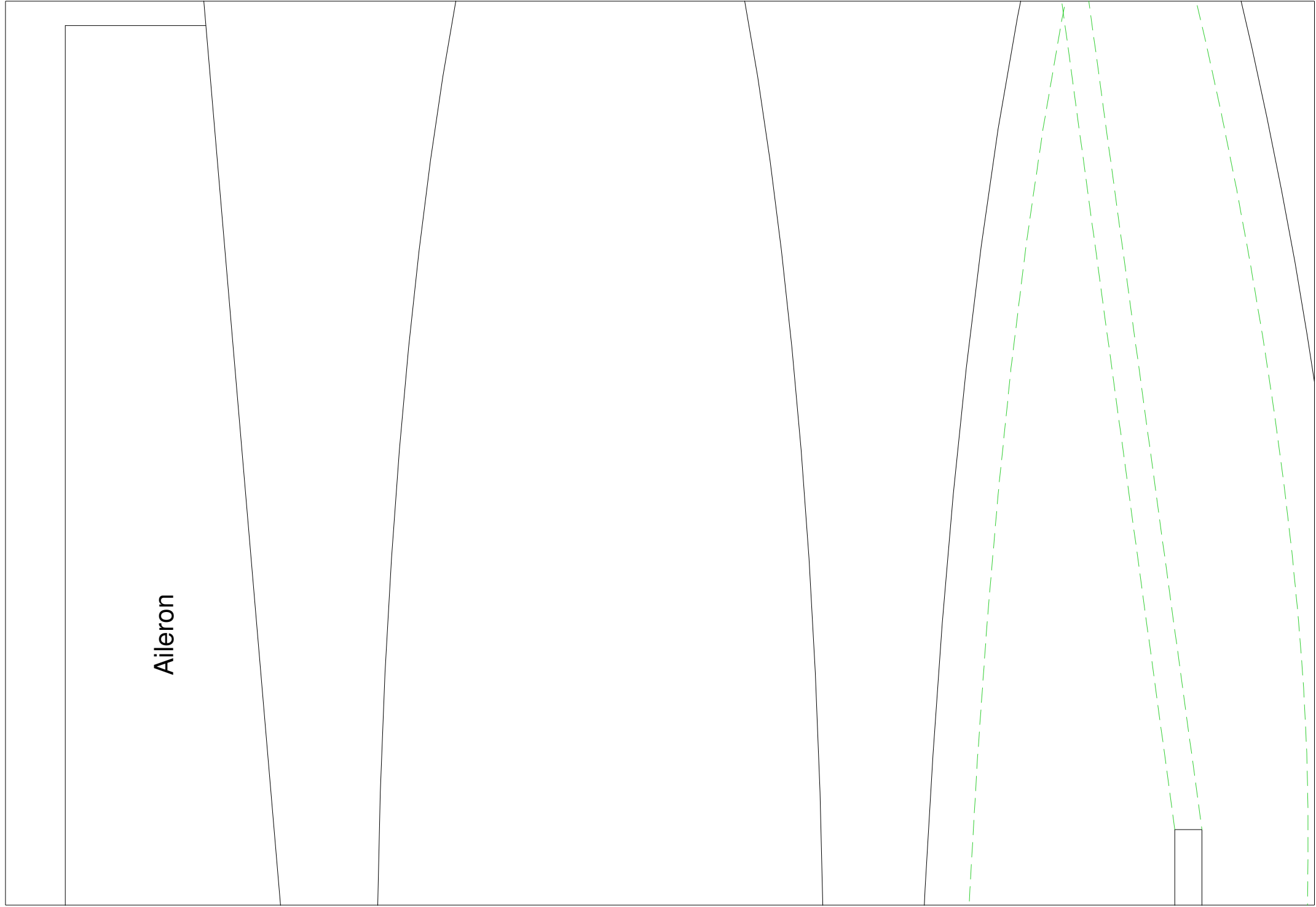
Motor mount
Make 1 from
1/8" ply

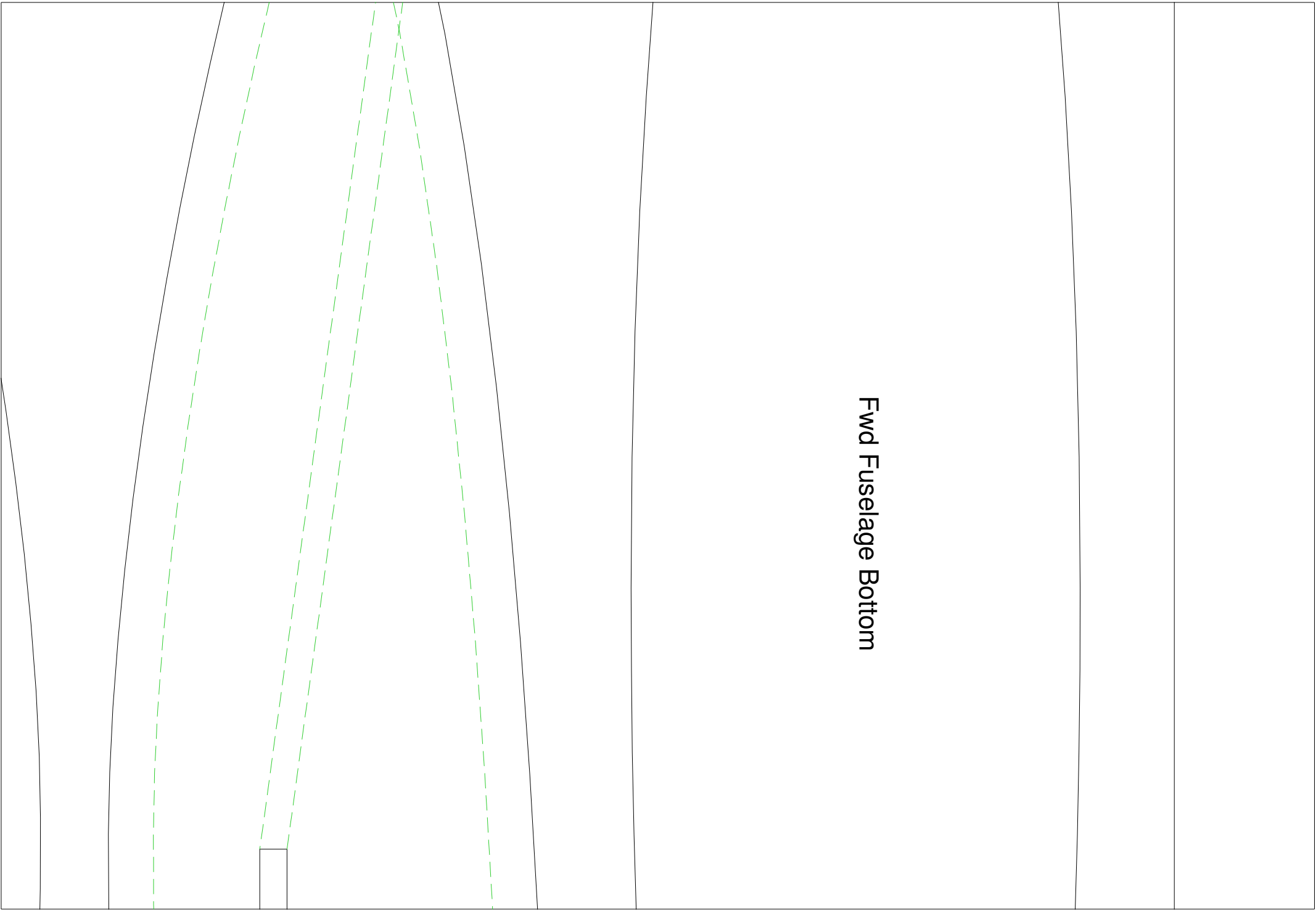
is (cut slot in wing with knife and install with epoxy)

ube main spar

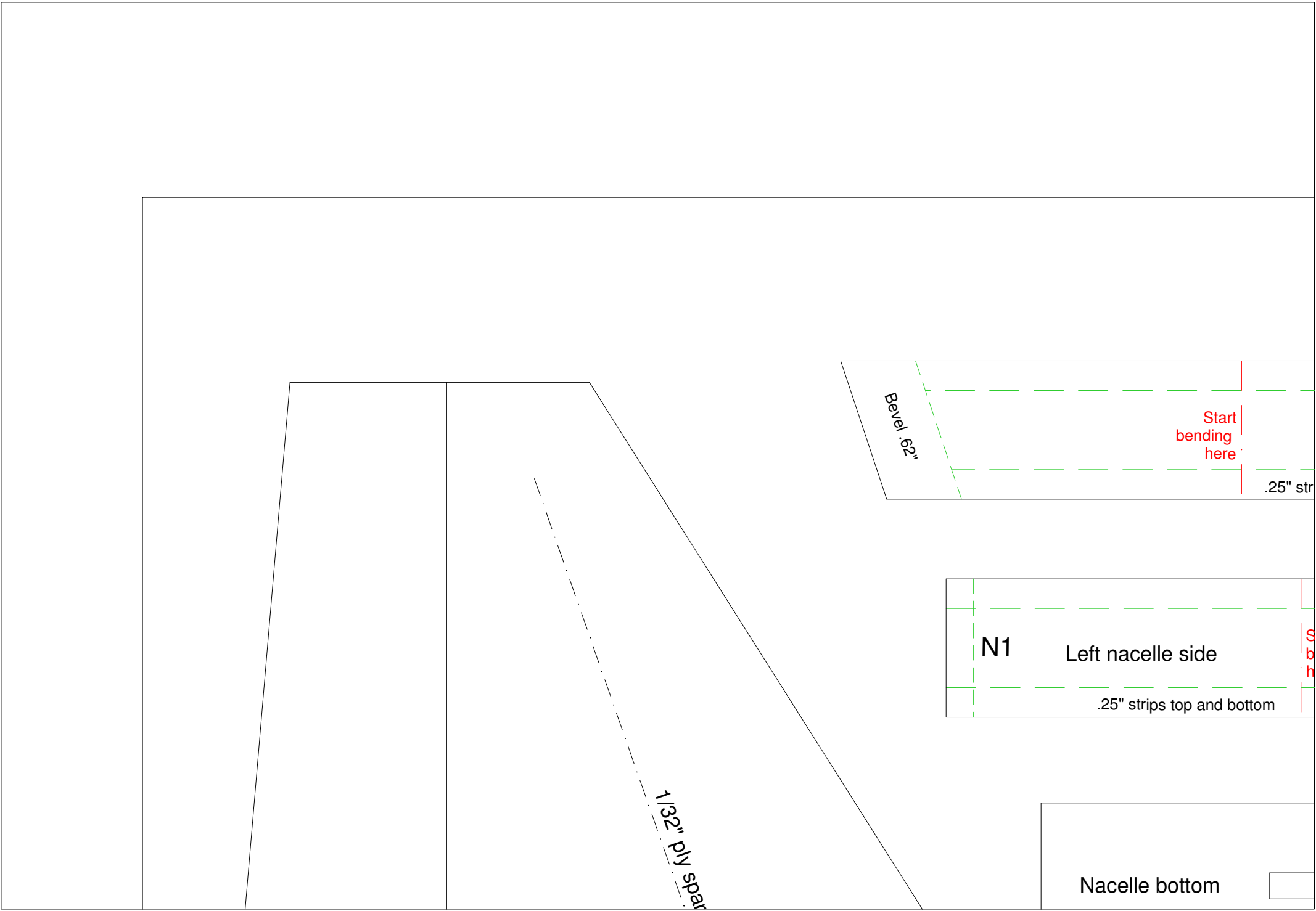


Aileron





Fwd Fuselage Bottom



Bevel .62"

Start bending here

.25" str

N1

Left nacelle side

.25" strips top and bottom

1/32" ply spar

Nacelle bottom



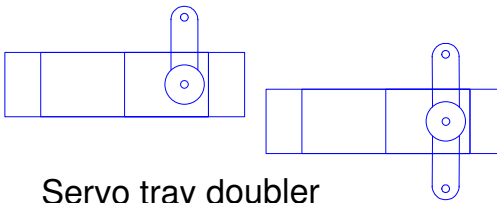
Right nacelle side

N1

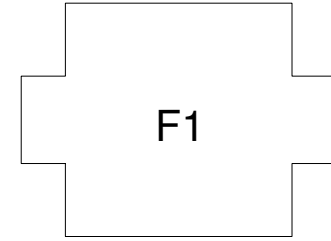
lips top and bottom

start
ending
here

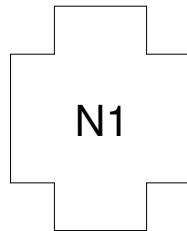
Bevel .62"



Servo tray doubler
(cut to fit servos used)



F1



N1



