



Vertical Tail
(make 1)

Fwd Fuselage B

Bulkhead F-2
(make 1)

Bulkhead F-1
(make 1)

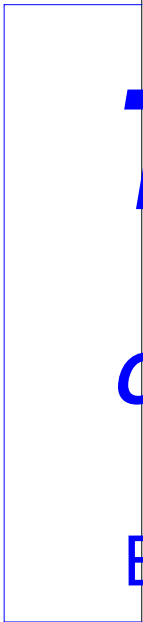
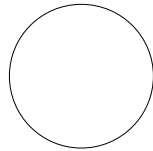
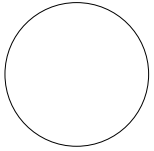
Bu

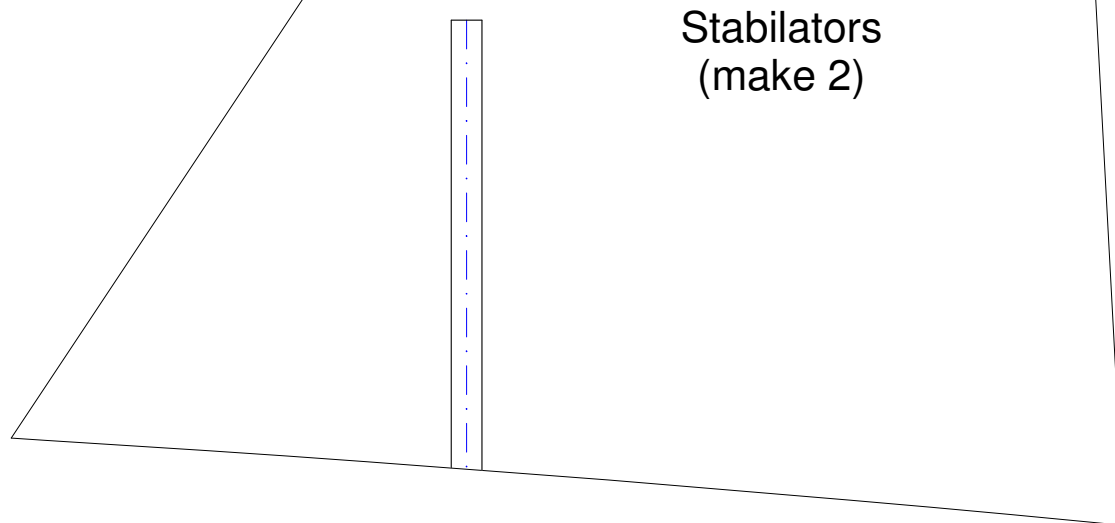
Turtledeck Top
(make 1)

ottom (make 1)

ulkhead F-3
(make 1)

Bulkhead F-4
(make 1)



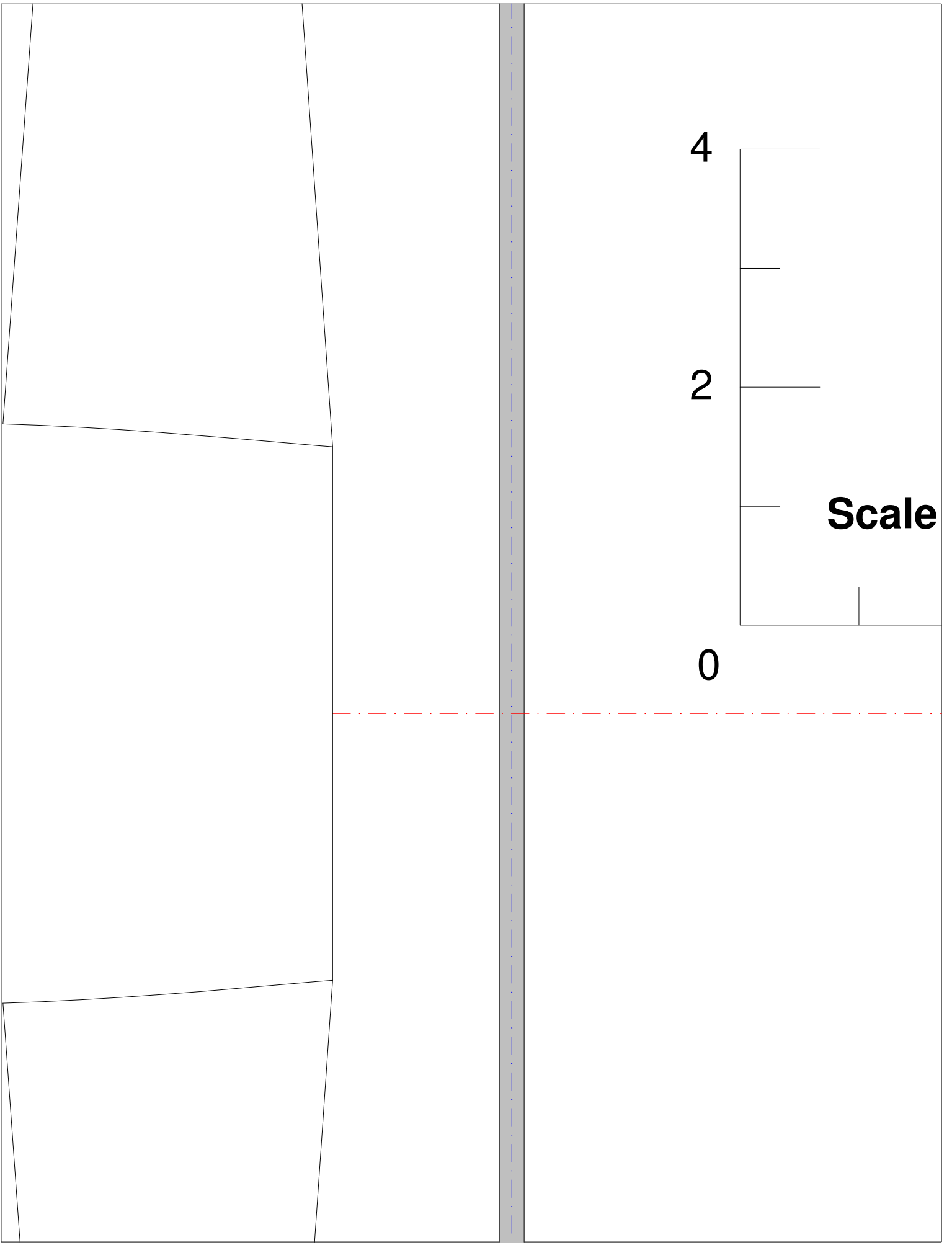


T-38 Talon Park Jet

Designed by Steve Shumate

Copyright © 2005 All Rights Reserved

All parts made from 6 mm Depron or BlueCore foam unless otherwise specified

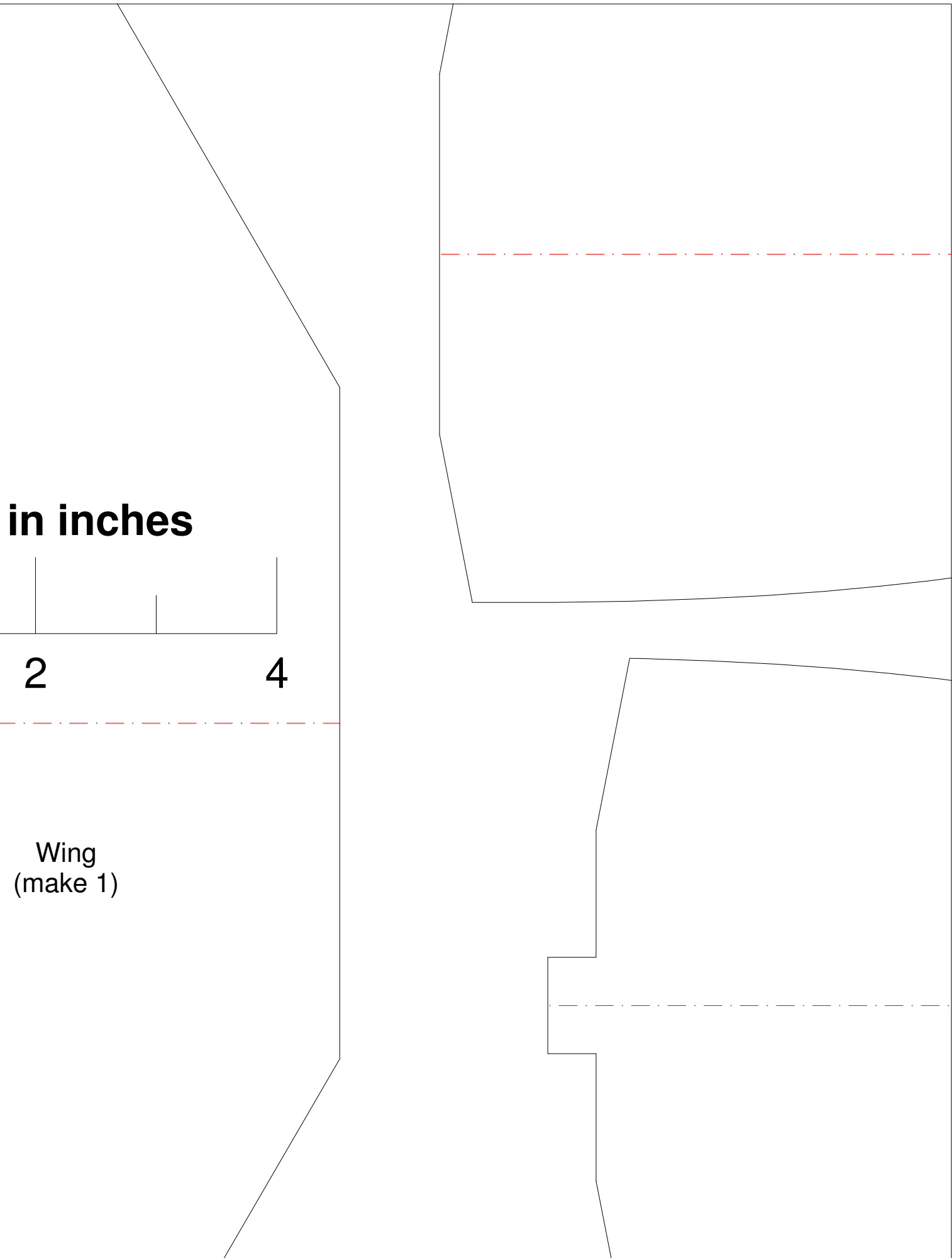


4

2

Scale

0

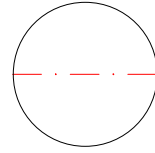


in inches

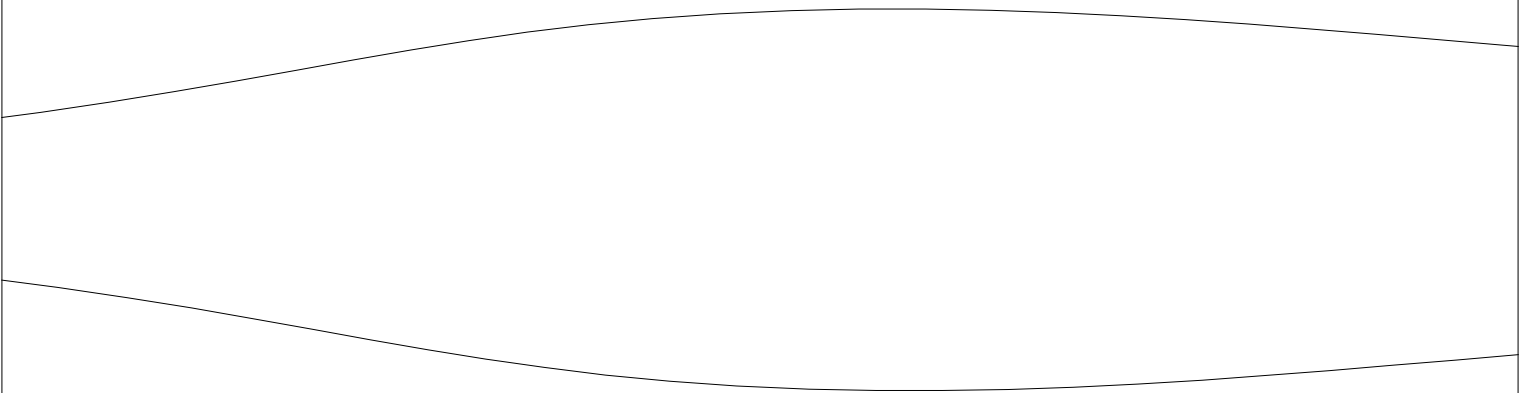
2

4

Wing
(make 1)



Cut access hole as required
to route servo wires to receiver

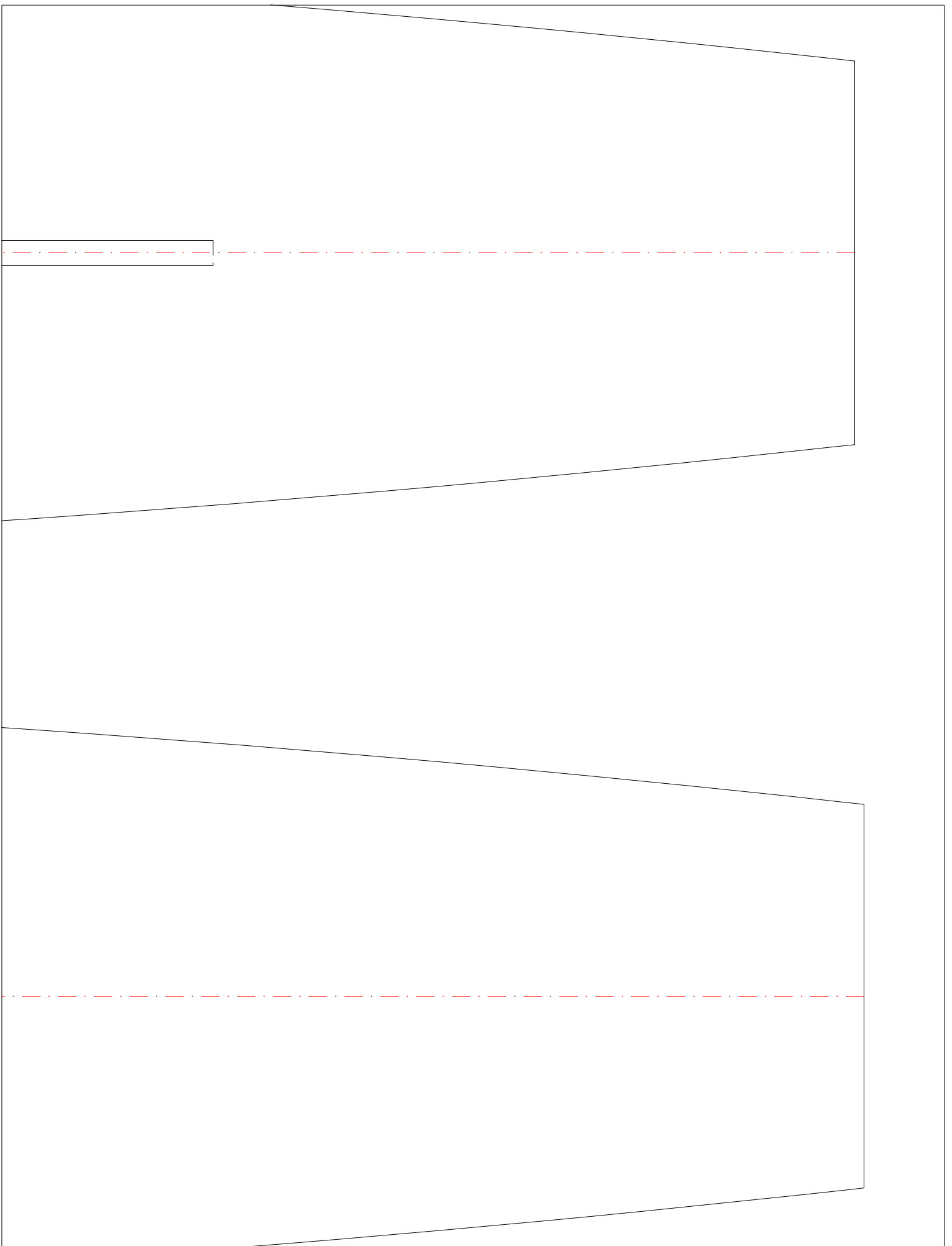


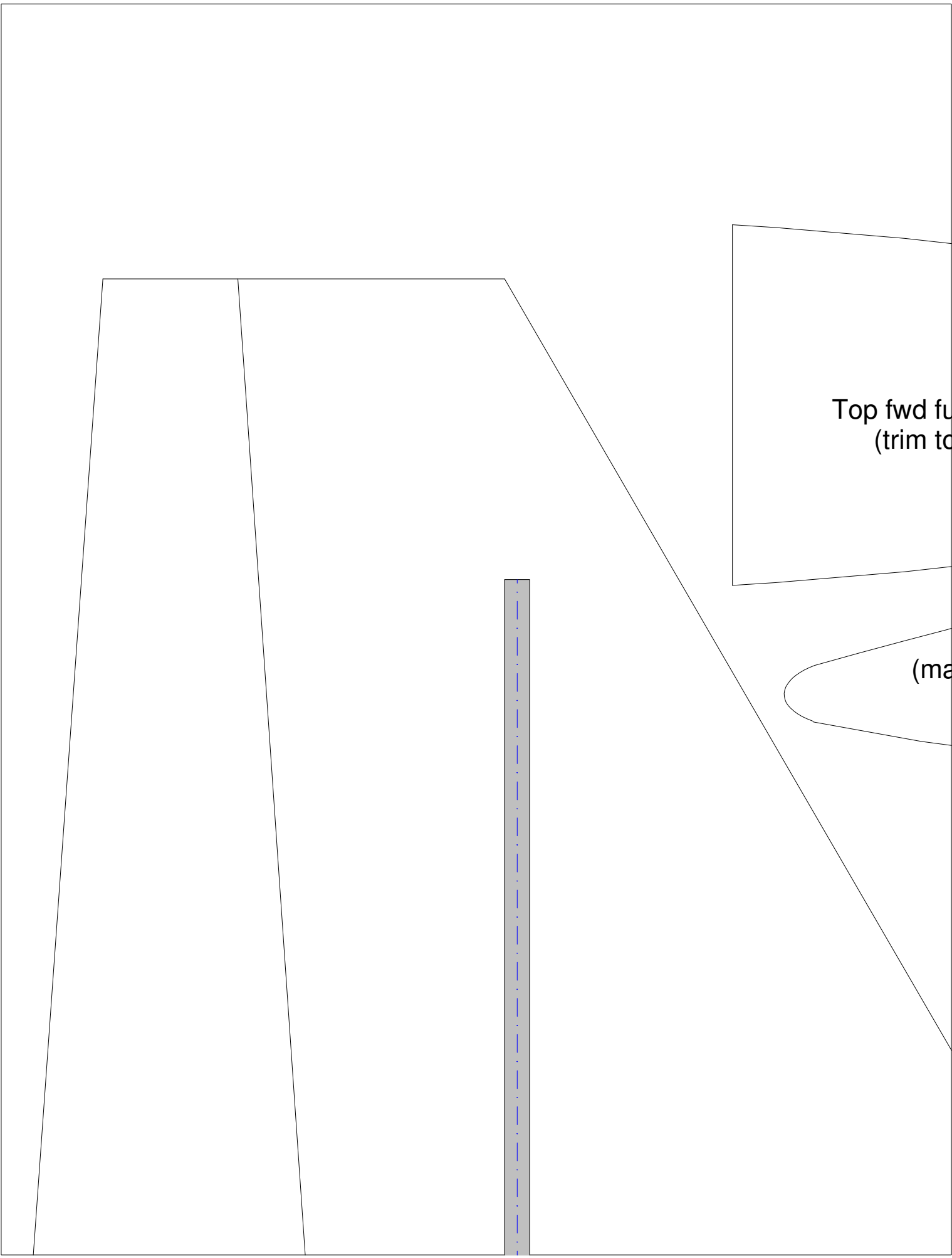
Aft Fuselage Top
(make 1)



Aft Fuselage Bottom
(make 1)

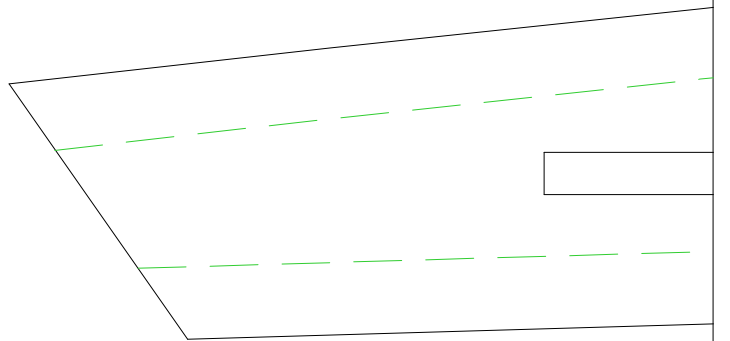
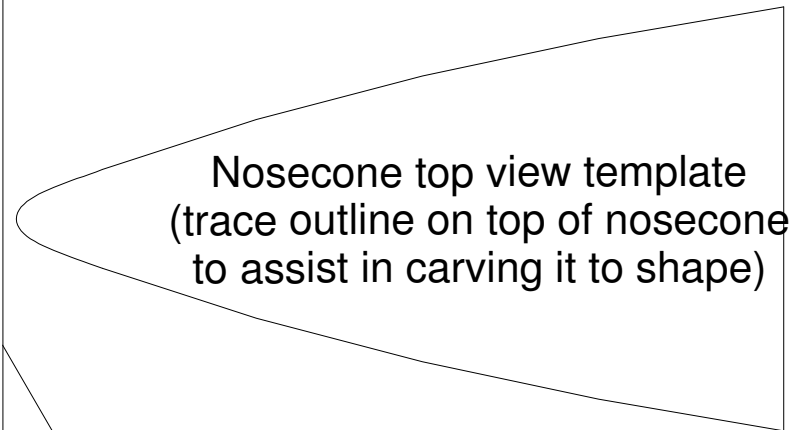
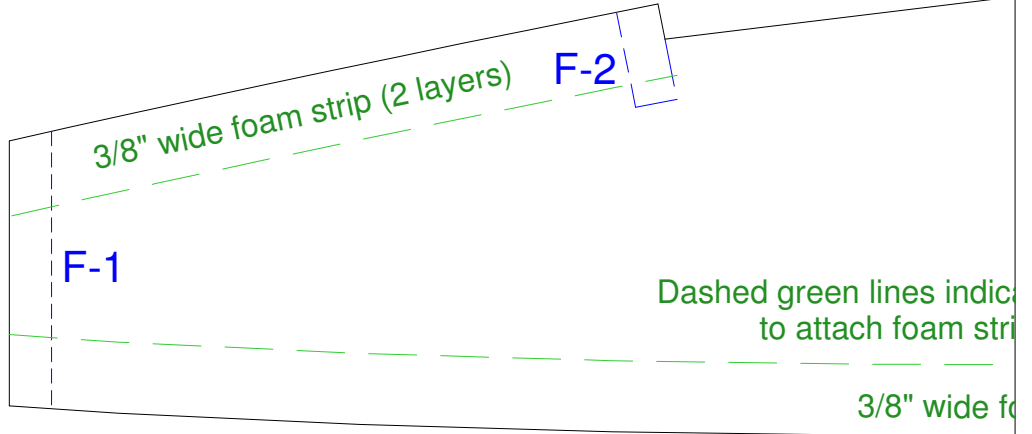
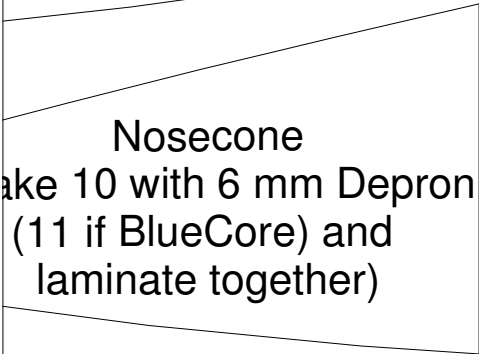
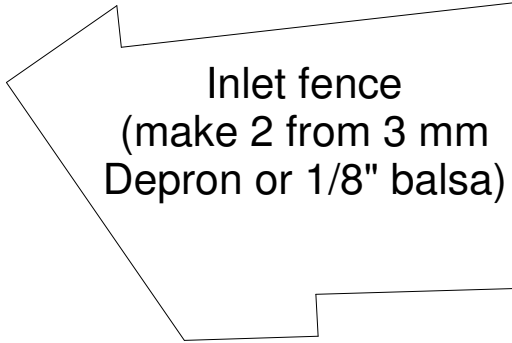
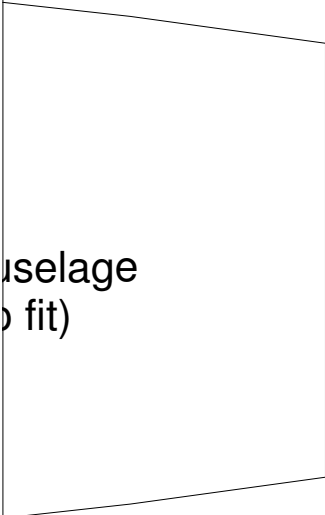






Top fwd fu
(trim to

(ma



Note: Inside of canopy can be hollowed out if airplane CG is not already too far aft

Canopy
(make 12 with 6 mm
(14 if BlueCore
laminates together)

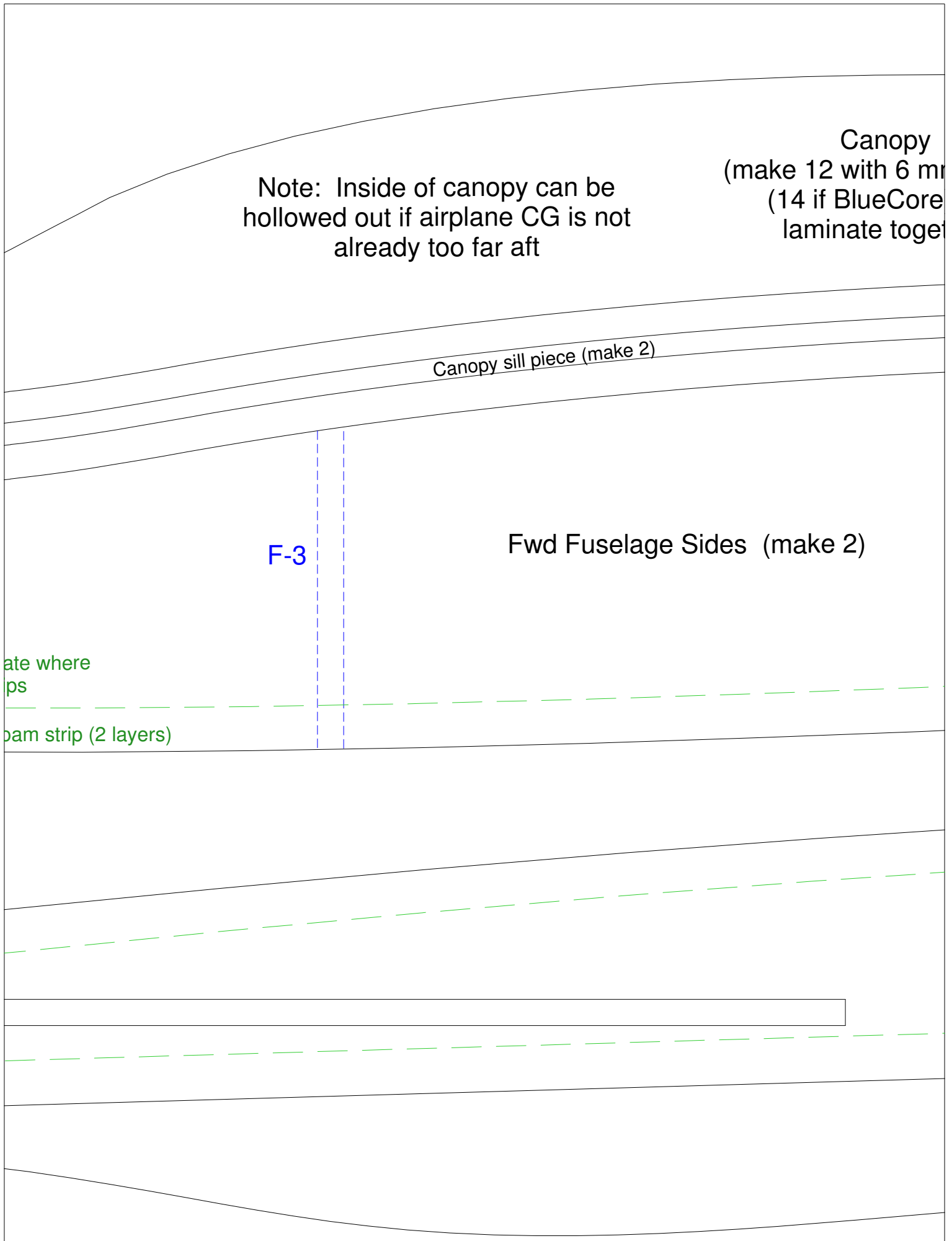
Canopy sill piece (make 2)

F-3

Fwd Fuselage Sides (make 2)

ate where
ps

dam strip (2 layers)



m Depron
) and
ther)

Laminate 2 foam strips (1/2" outboard,

OPTIONAL: To simulate crease in turtledeck, cut here, inset top piece inboard slightly, sand corner on lower piece round, add a foam support strip at bottom as shown, and glue back together.

F-4

3/8" wide foam strip

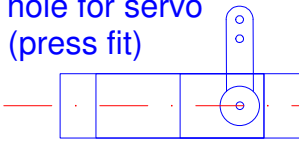
Aft Fuselage Sides
(make 2)

3/4" x 5/8"
doublers or
(drill 3/16"
bearin

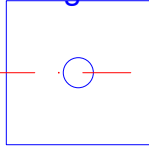
3/8" wide foam strip

3/8" inboard)

Cut hole for servo
(press fit)



3/4" x 3/4" 1/64" ply
doublers on each side
(drill 3/16" hole for pivot
bearing tubes)



Motor mount
(make 2 and
laminated together)

8" 1/64" ply
in inboard side
hole for pivot
bearing tubes)

