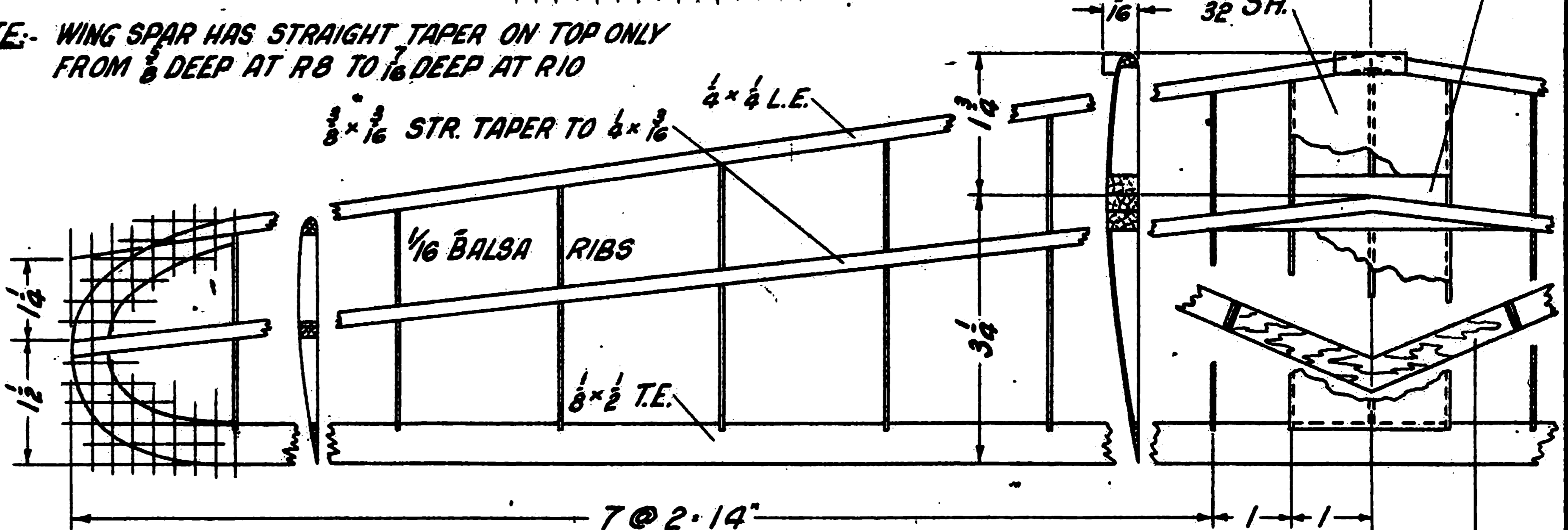
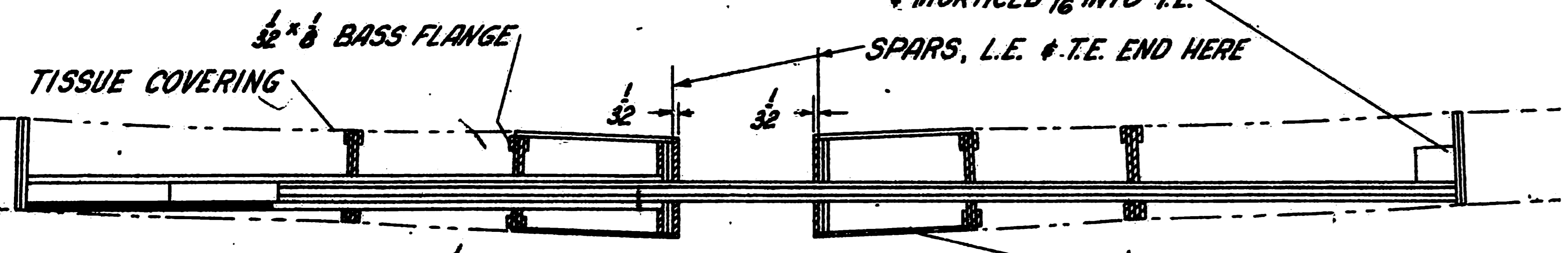


1/8 BALS FILL (SHADED) BETWEEN TOP & BOTT. OF "BOX" - SHAPE TO SUIT TONGUE.
1/16 3-PLY BIRCH MORTICED 1/8 INTO T.E. - FORMS PART OF BOTTOM OF BOX. REMAINDER OF BOX IS 1/16 BASS.

NOTE: ALL WIRE FITTINGS ARE #10 GA. EXCEPT AS NOTED.

NOTE: WING SPAR HAS STRAIGHT TAPER ON TOP ONLY FROM 3/8 DEEP AT R8 TO 1/16 DEEP AT R10

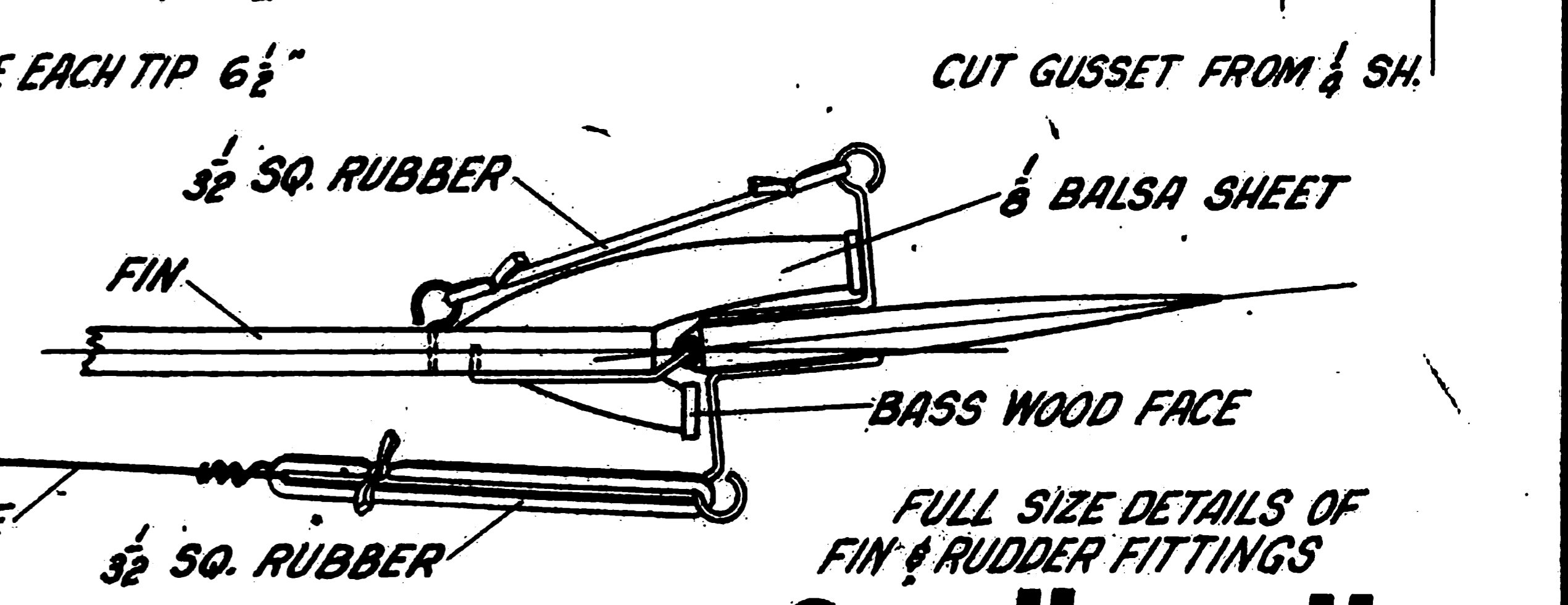
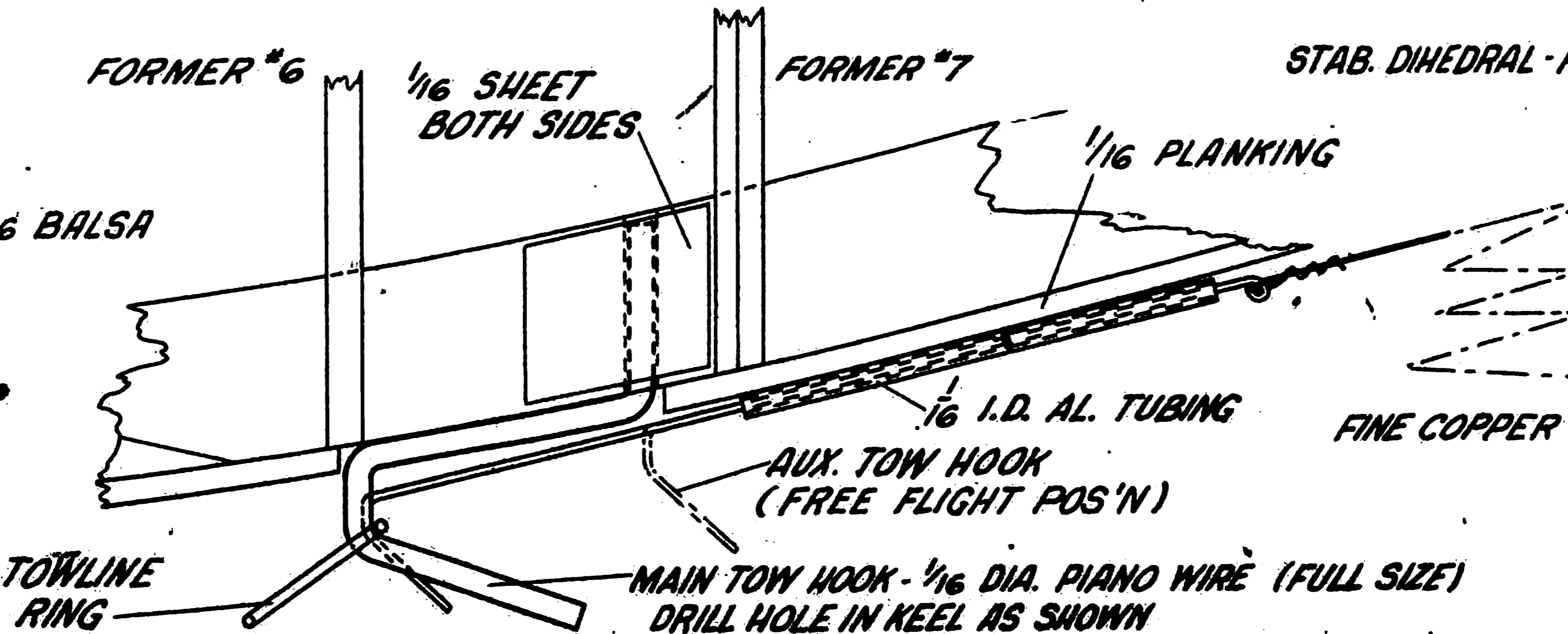
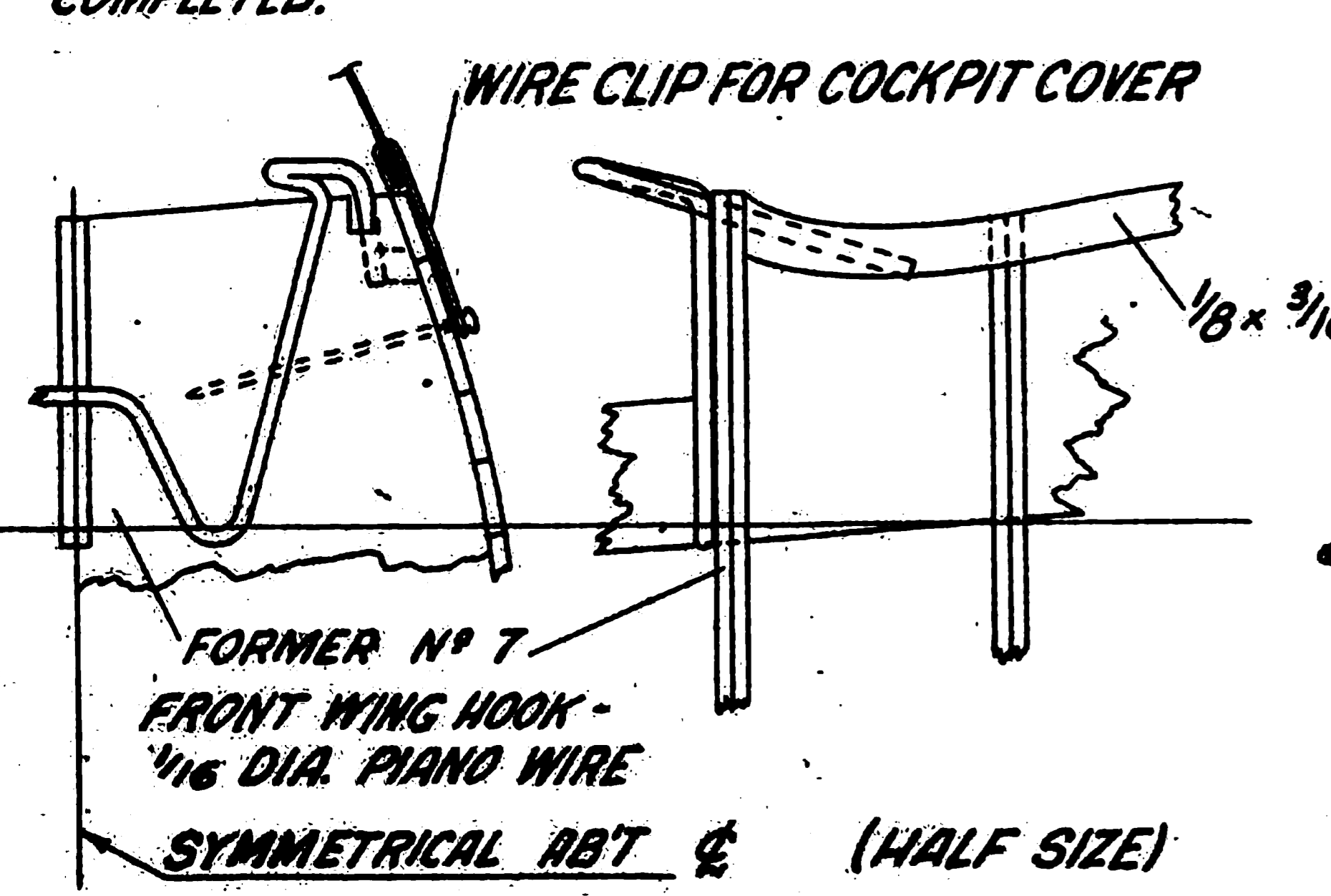
1/4 x 1/4 BALS TRIMMED TO FIT SNUGLY OVER TONGUE & MORTICED 1/16 INTO T.E.



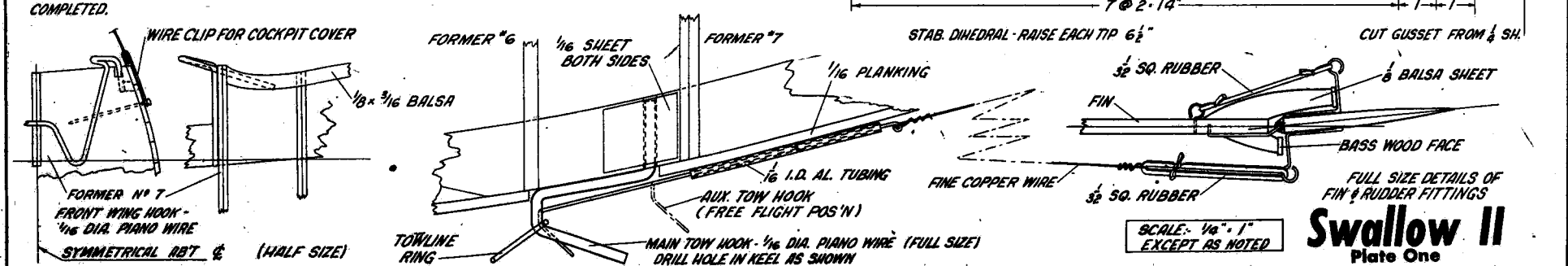
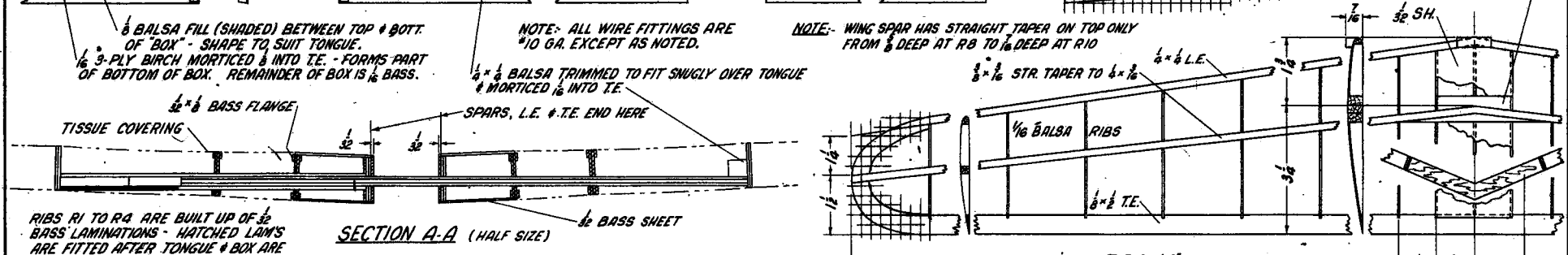
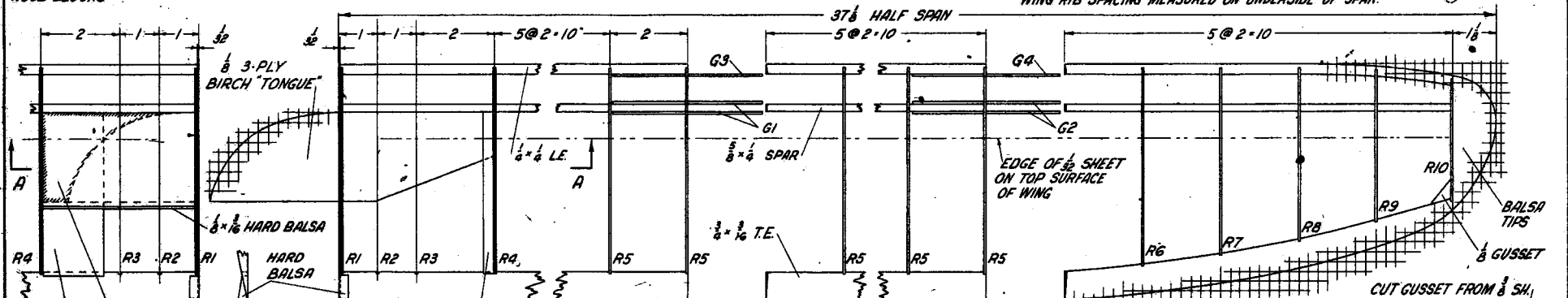
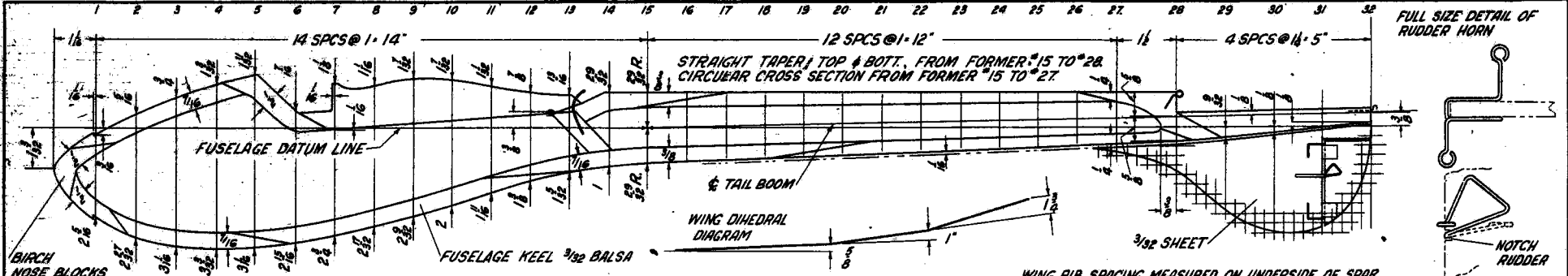
RIBS R1 TO R4 ARE BUILT UP OF 3/32 BASS LAMINATIONS - HATCHED LAMS ARE FITTED AFTER TONGUE & BOX ARE COMPLETED.

SECTION A-A (HALF SIZE)

STAB. DIHEDRAL - RAISE EACH TIP 6 1/2"



SCALE: 1/4" = 1" EXCEPT AS NOTED



Swallow II
Plate One

AFTER PLANING, TRIM TO THIS OUTLINE AND REMOVE UPPER PORTION OF FORMER N°6, INSERTING $\frac{1}{8}$ " SPREADER AS SHOWN. FORM CELLULOID BY HEATING AND CUT TO FIT SNUGLY OVER WING. AFTER CEMENTING CELL'D IN PLACE, CUT THE COVER FREE ABOUT $\frac{1}{8}$ " BEHIND N°5 AS SHOWN. $\frac{1}{32}$ " BASS FLANGE AND WIRE CLIPS SECURE COVER AND PERMIT EASY REMOVAL.

BASS WOOD FLANGE

$\frac{1}{8}$ " Balsa

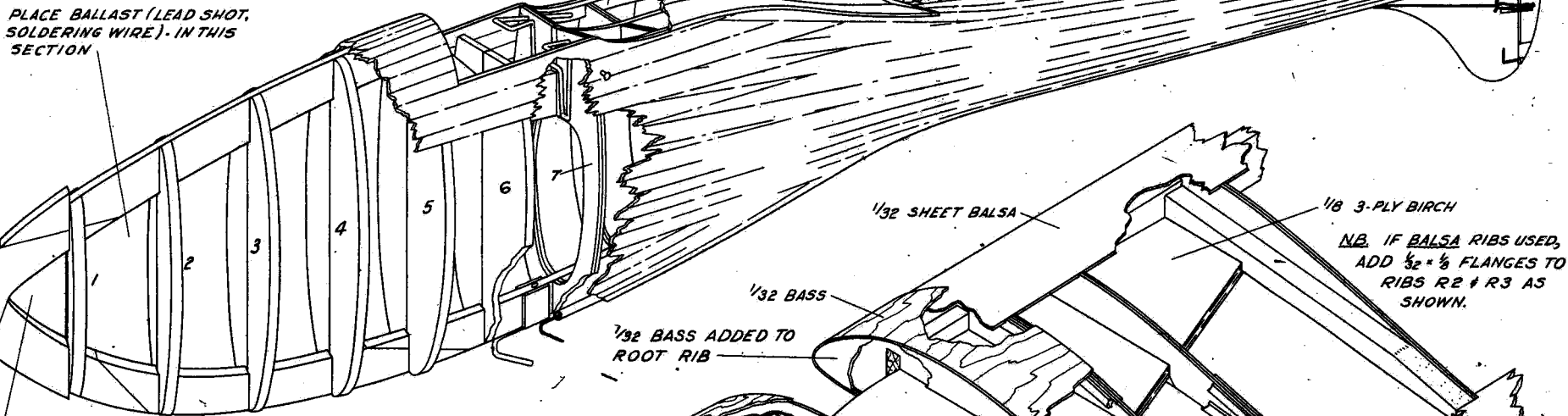
WIRE CLIPS ENGAGED BY COMMON PIN IN FORMER N°6

BALSA BLOCK SHAPED TO BEAR AGAINST WING STOPS

LEAVE OPENING FOR ACCESS TO REAR WING HOOK.

$\frac{1}{8}$ x $\frac{9}{16}$ Balsa - CUT TO SHAPE FROM $\frac{1}{8}$ SHEET.

PLACE BALLAST (LEAD SHOT, SOLDERING WIRE) IN THIS SECTION



$\frac{1}{32}$ SHEET Balsa

$\frac{1}{8}$ 3-PLY BIRCH

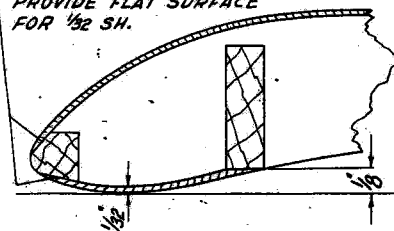
NB. IF Balsa RIBS USED, ADD $\frac{1}{32}$ x $\frac{1}{8}$ FLANGES TO RIBS R2 + R3 AS SHOWN.

$\frac{1}{32}$ BASS

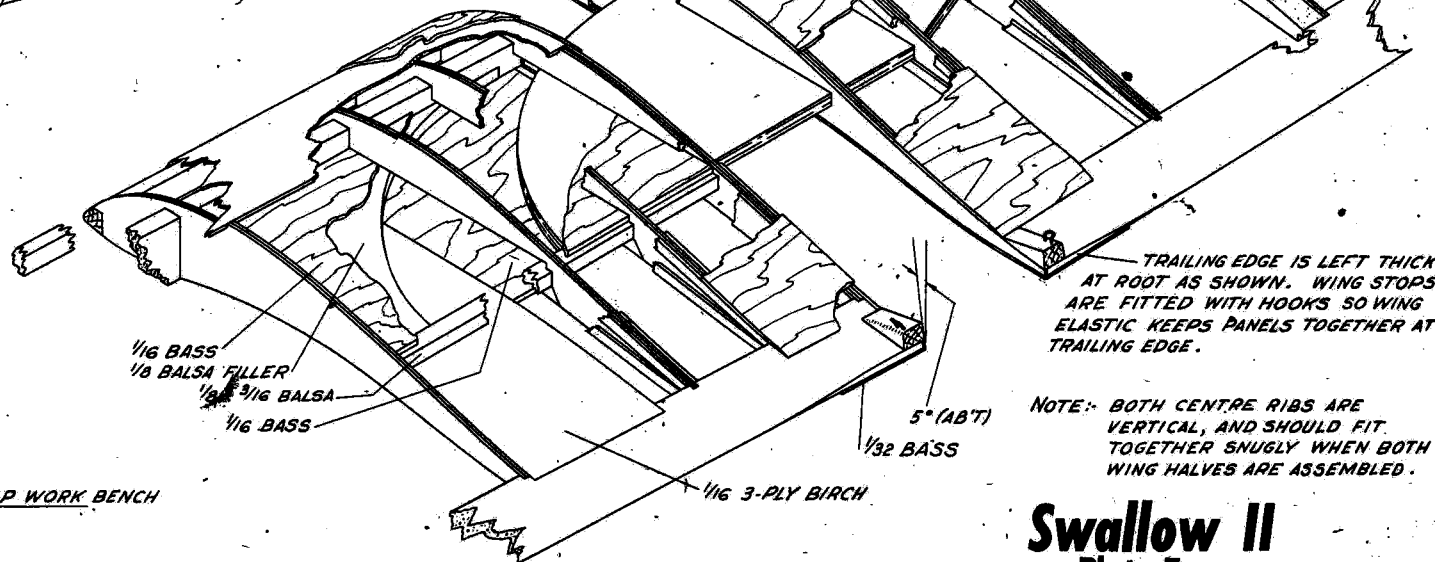
$\frac{1}{32}$ BASS ADDED TO ROOT RIB

CEMENT HARDWOOD BLOCKS TO EACH SIDE OF KEEL ~ SAND TO SHAPE AFTER PLANING.

NOTE: L.E. IS BEVELLED TOP & BOTTOM TO PROVIDE FLAT SURFACE FOR $\frac{1}{32}$ SH.



WING LEADING EDGE DETAILS

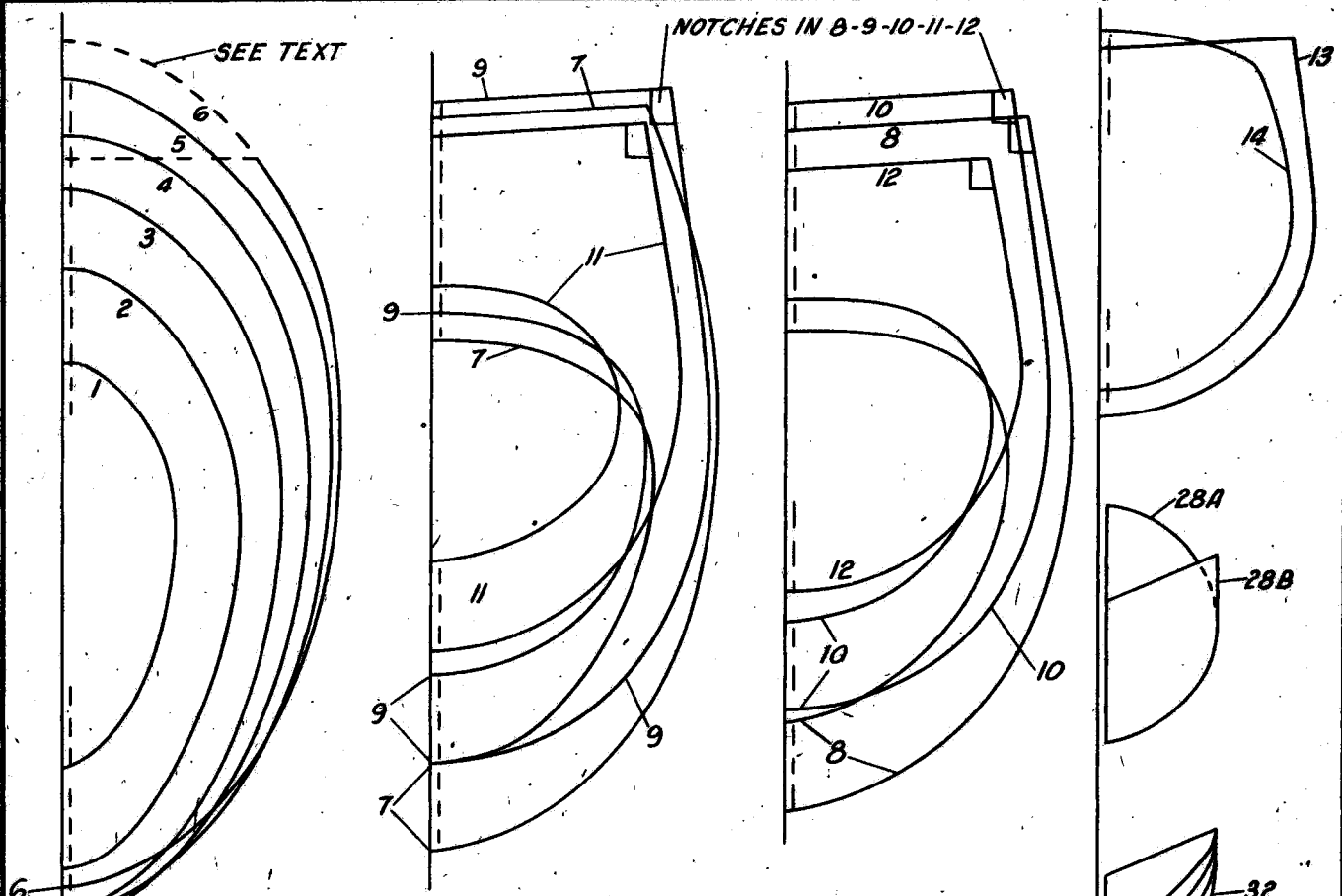


$\frac{1}{16}$ BASS
 $\frac{1}{8}$ Balsa FILLER
 $\frac{1}{16}$ x $\frac{3}{16}$ Balsa
 $\frac{1}{16}$ BASS

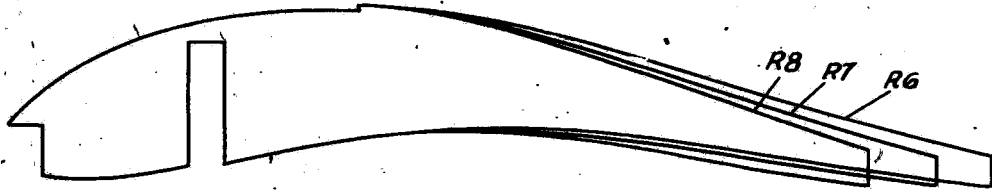
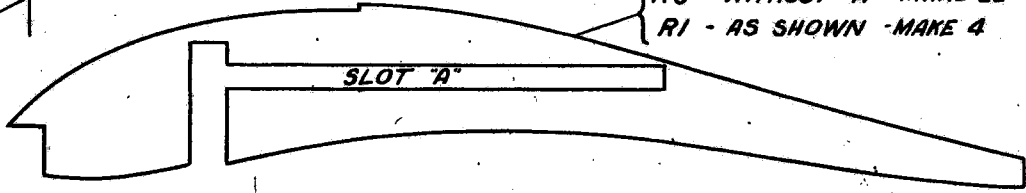
TRAILING EDGE IS LEFT THICK AT ROOT AS SHOWN. WING STOPS ARE FITTED WITH HOOKS SO WING ELASTIC KEEPS PANELS TOGETHER AT TRAILING EDGE.

NOTE: BOTH CENTRE RIBS ARE VERTICAL, AND SHOULD FIT TOGETHER SNUGLY WHEN BOTH WING HALVES ARE ASSEMBLED.

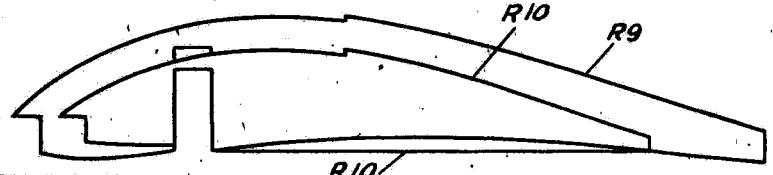
Swallow II
Plate Two



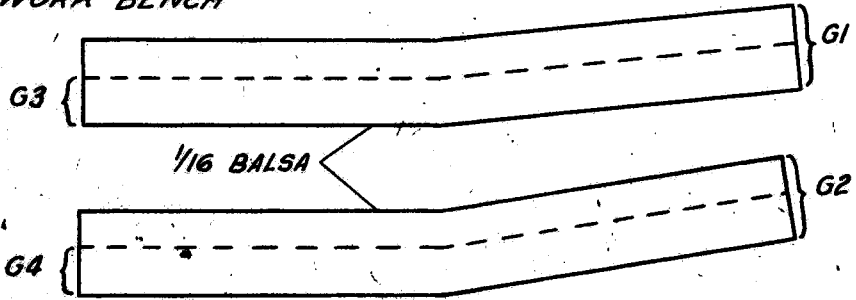
{ R5 - WITHOUT "A" - MAKE 22
 R1 - AS SHOWN - MAKE 4



MAKE 2 OF EACH OF
 RIBS R6 TO R10 AND
 GUSSETS G3 & G4.
 MAKE 4 OF EACH OF
 G1 AND G2.



WORK BENCH



MATERIAL LIST FOR FORMERS	
1/8 SHEET	1 TO 6
1/8 2-PLY	7-8-12-13
3/32 SHEET	9 TO 11
	28 TO 32
1/16 SHEET	14 TO 27

REFER TO TEXT AND
 DRWG N°1 FOR FURTHER
 DETAILS OF RIBS, ETC.

Swallow II

Plate Three

FULL SIZE