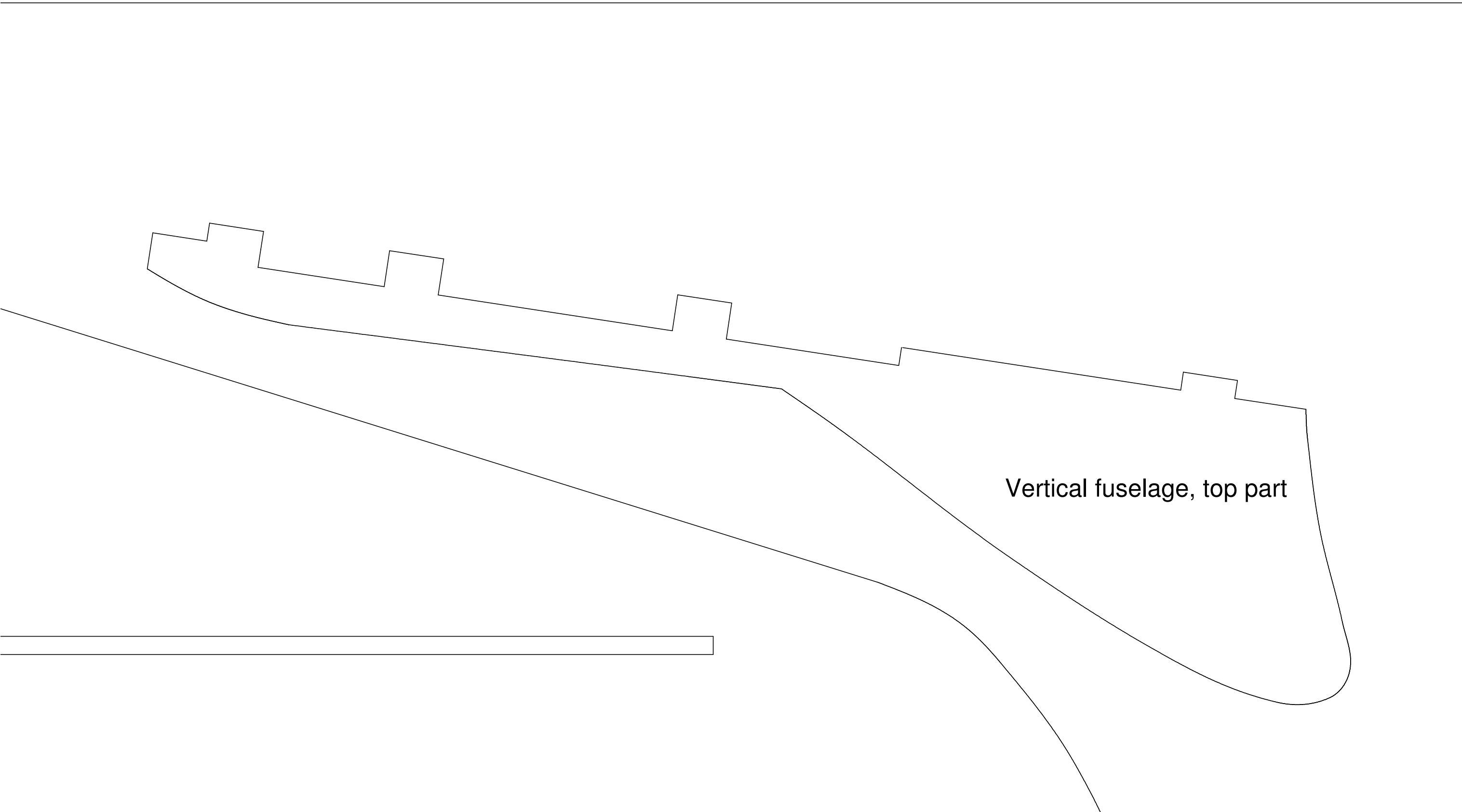
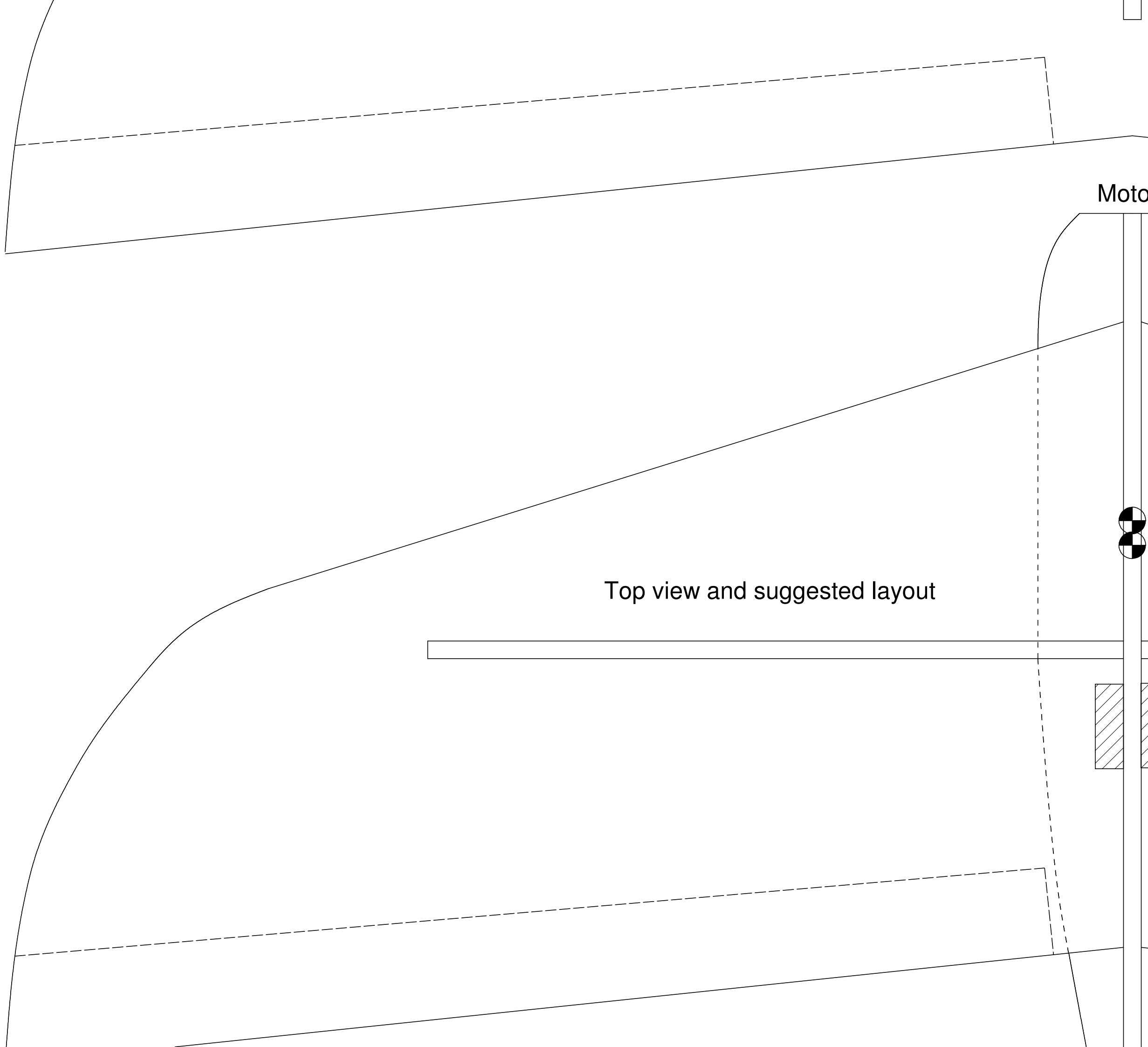


Vertical fuselage, bottom part



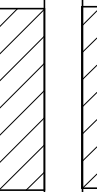
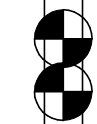


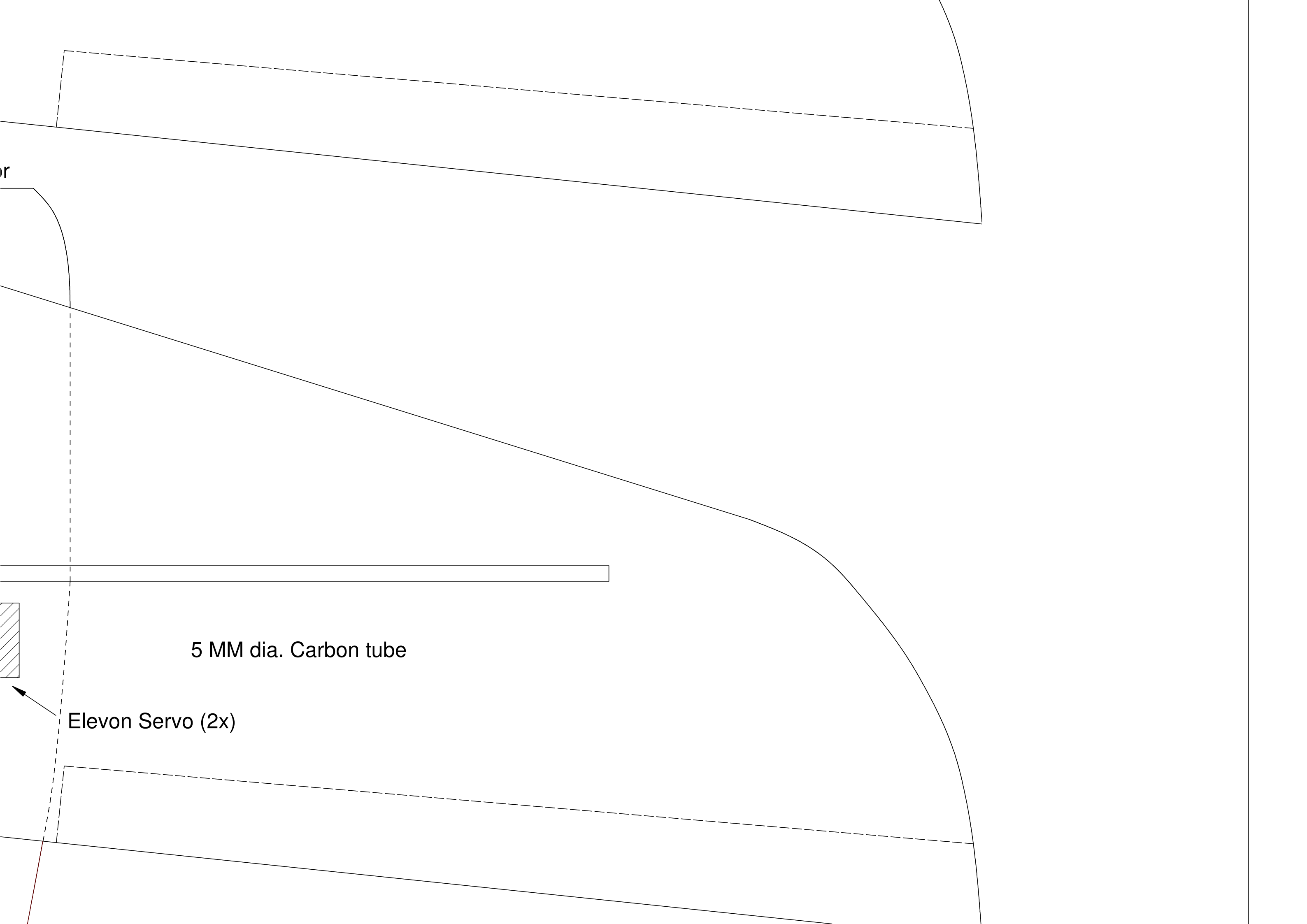
Vertical fuselage, top part



Top view and suggested layout

Moto

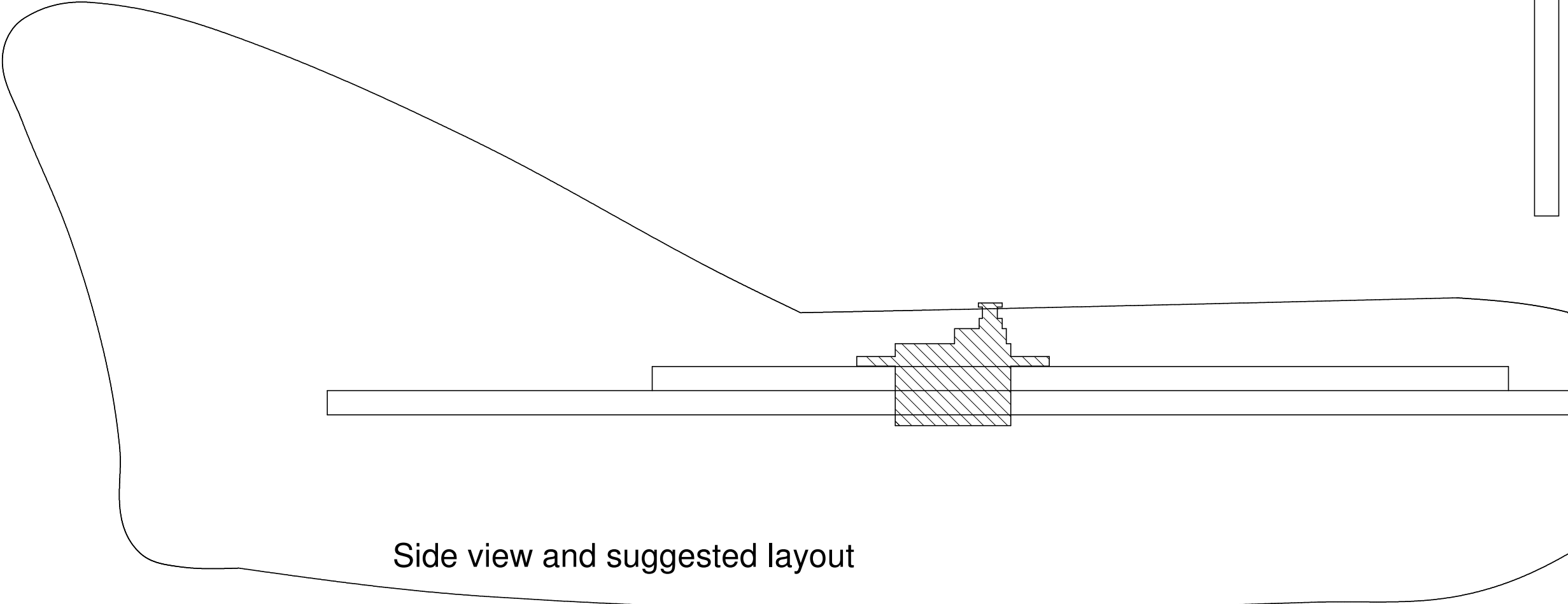




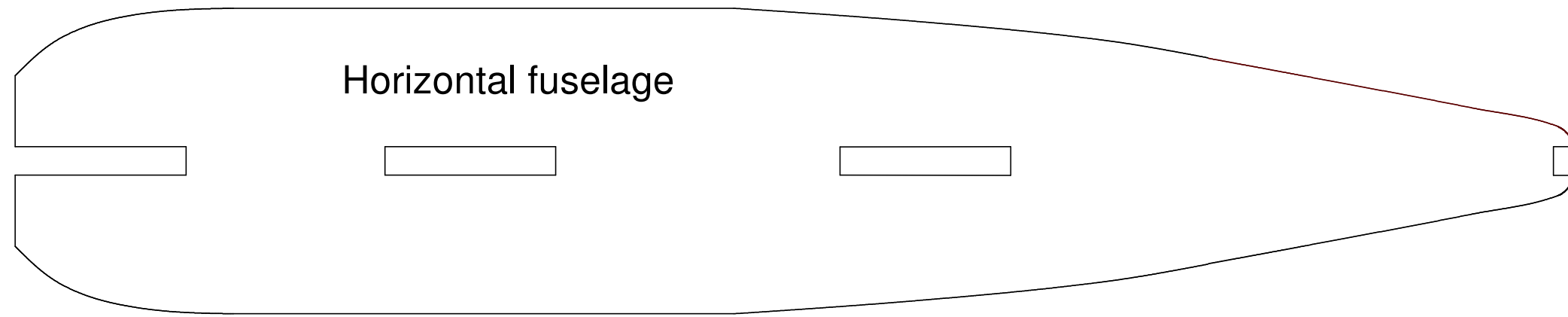
r

5 MM dia. Carbon tube

Elevon Servo (2x)



Side view and suggested layout



Motor

# Project Depdart 280

Material: 5 mm Depron®

Power: From CD-Rom motor 14turn 0.4 mm to 150 W brushless

Propeller: Gunther 125 x 110 for CD-Rom motor; propeller to suit larger motors

Recommended RTF Weight: 80 - 200 grams

Design and Drawing: Willem Bravenboer  
Depron® 5 MM

Copyright 2008 Willem Bravenboer

REVISION V 1.0 2008-10-10