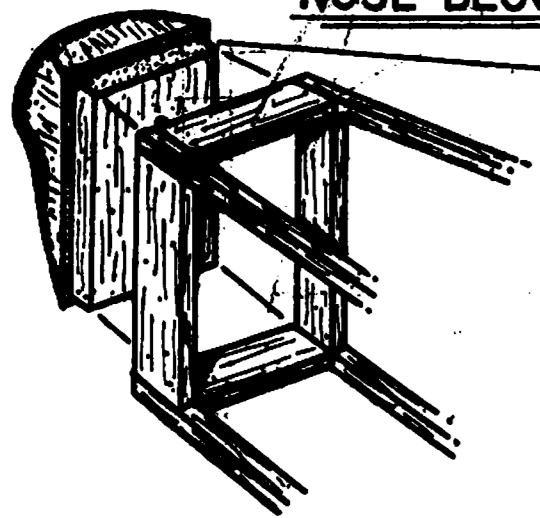


NOSE BLOCK DETAIL

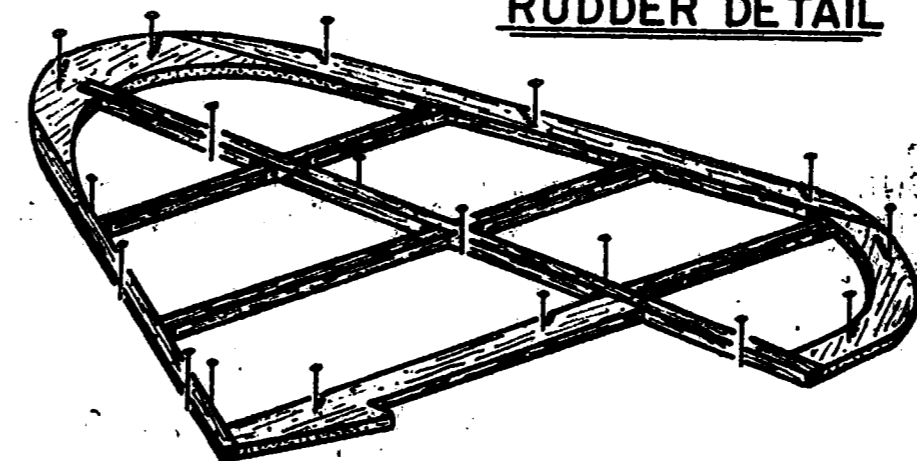


1/8" SHEET GLUED TO REAR OF NOSE BLOCK. THIS PLUG MUST FIT SNUGLY WITHIN NOSE OF FUSELAGE TO PREVENT MOVEMENT OF NOSE BLOCK.

The Seafarer
Plate 1

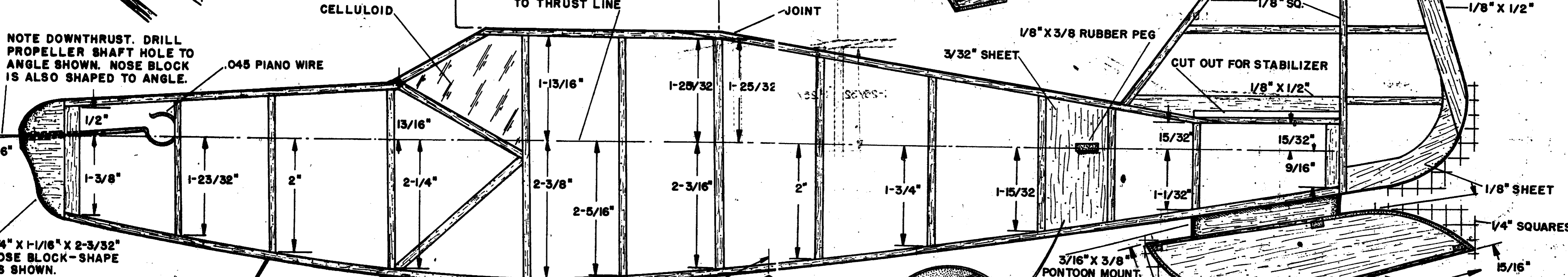
ALL MEASUREMENTS TO THRUST LINE

RUDDER DETAIL

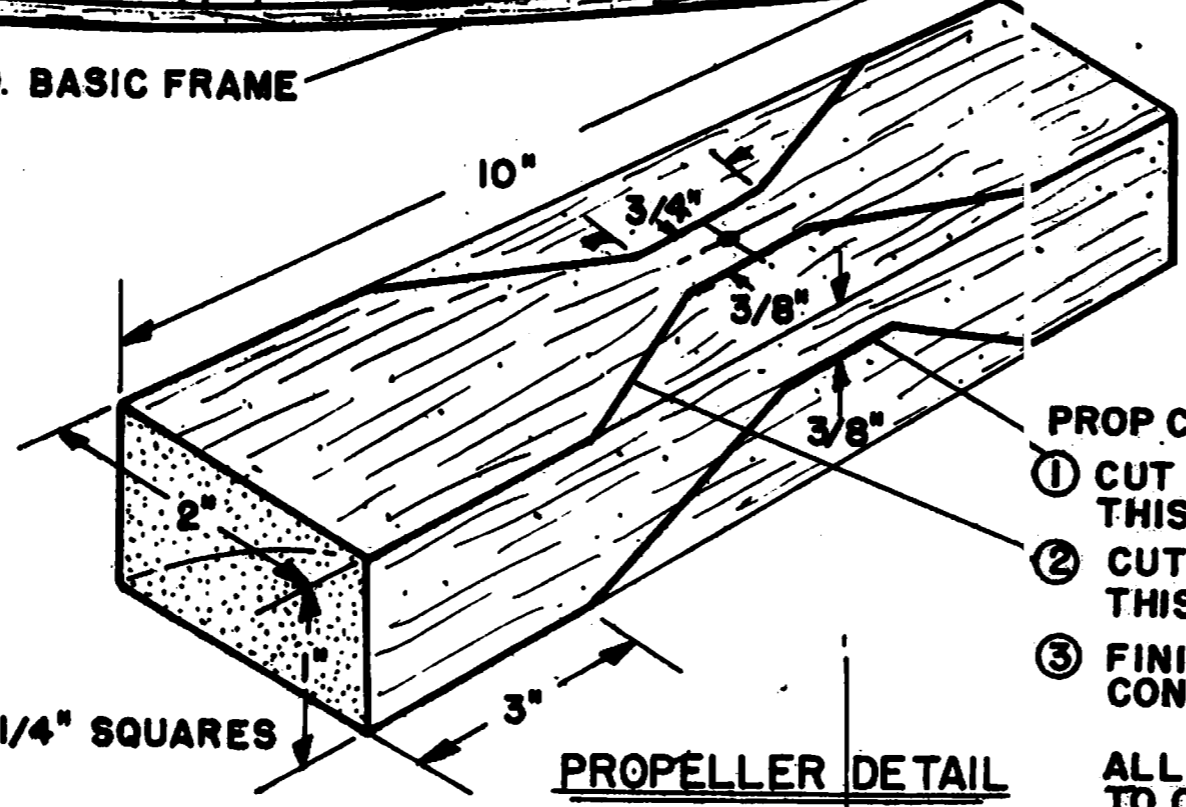
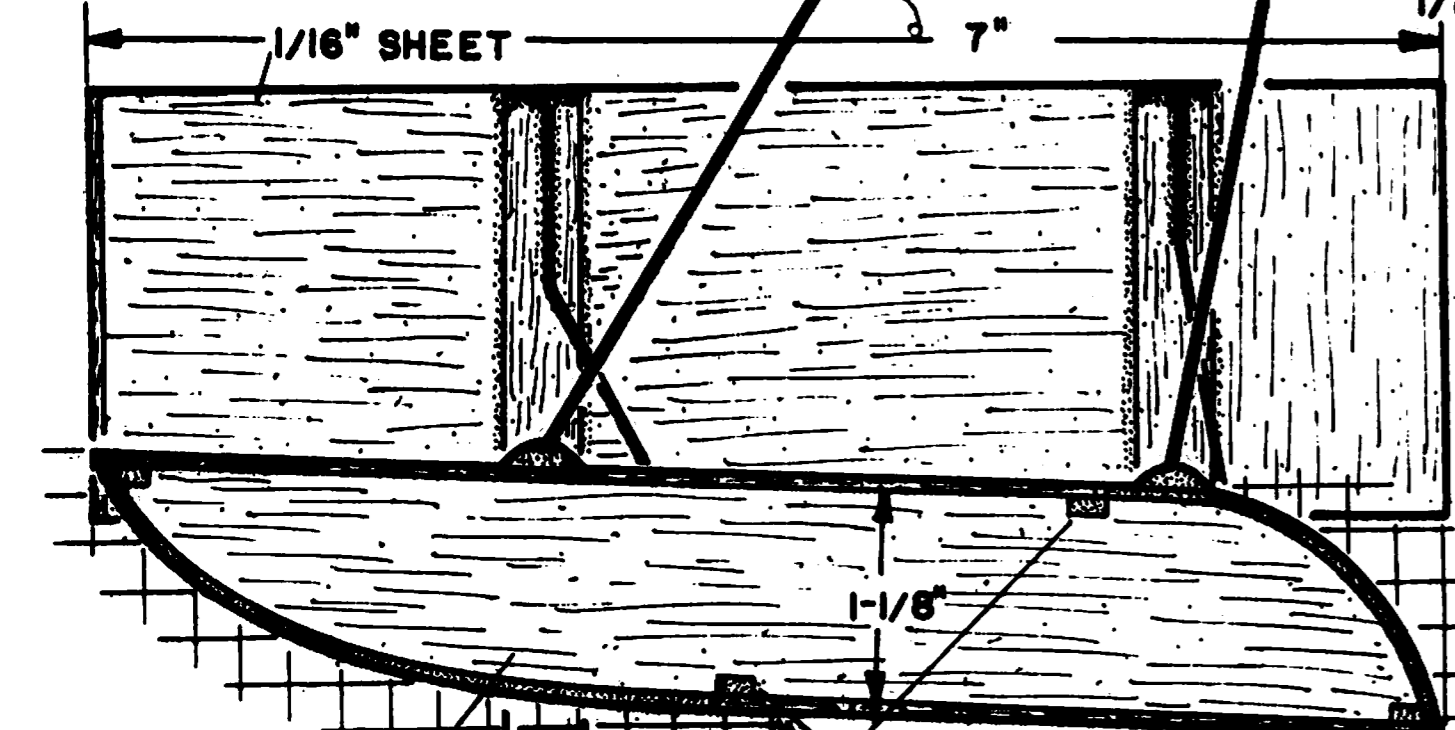


NOTE PINS IN CONSTRUCTION

NOTE DOWNTHRUST. DRILL PROPELLER SHAFT HOLE TO ANGLE SHOWN. NOSE BLOCK IS ALSO SHAPED TO ANGLE.

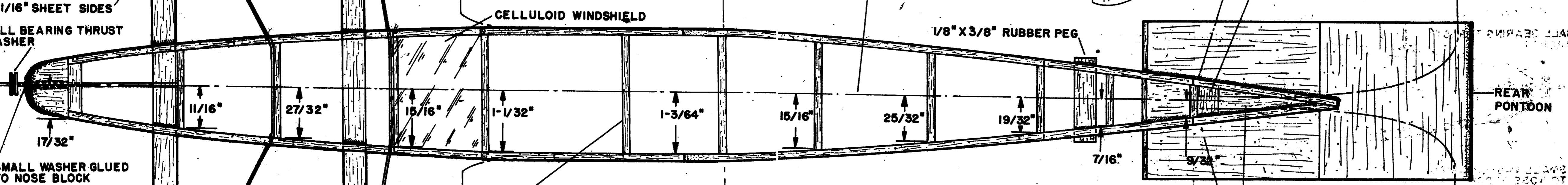
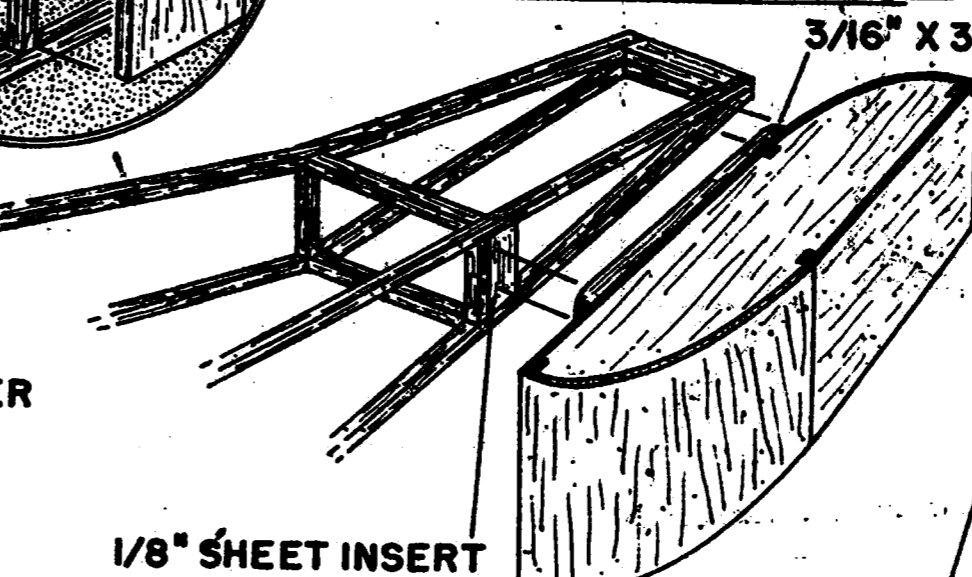


3/4" X 1-1/16" X 2-3/32" NOSE BLOCK-SHAPE AS SHOWN.

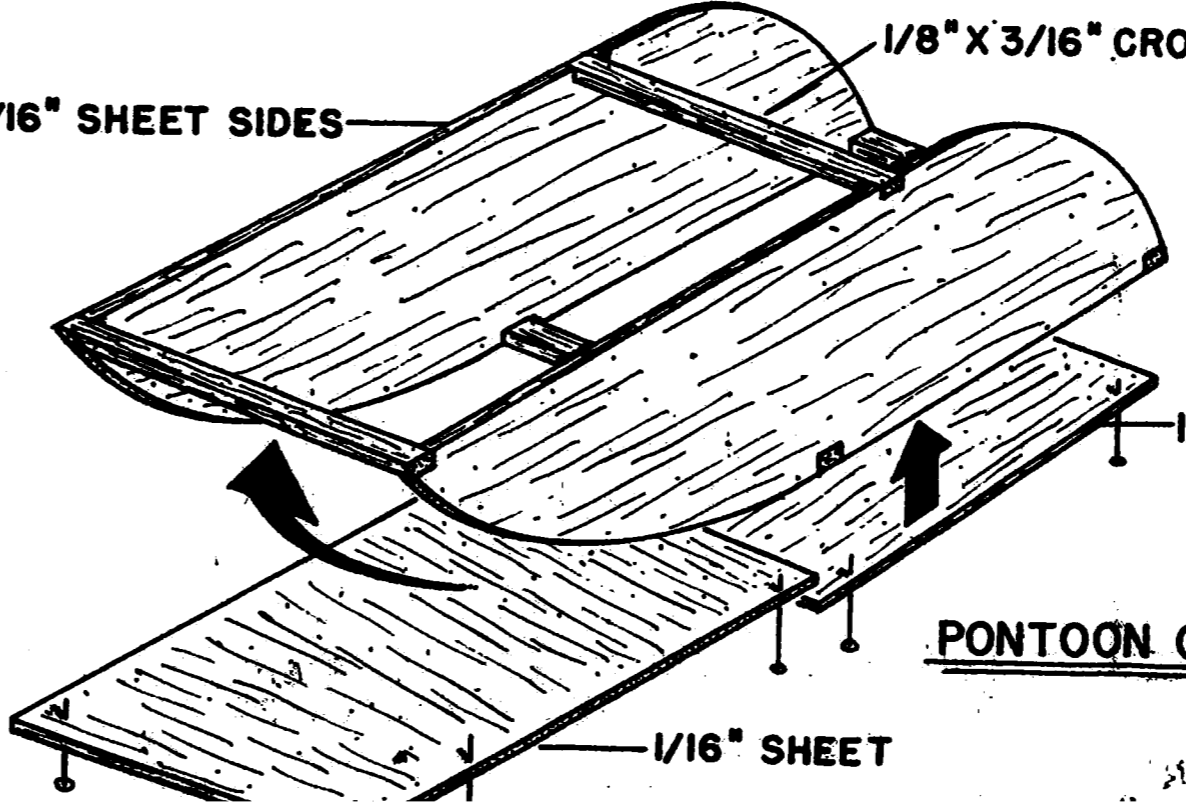
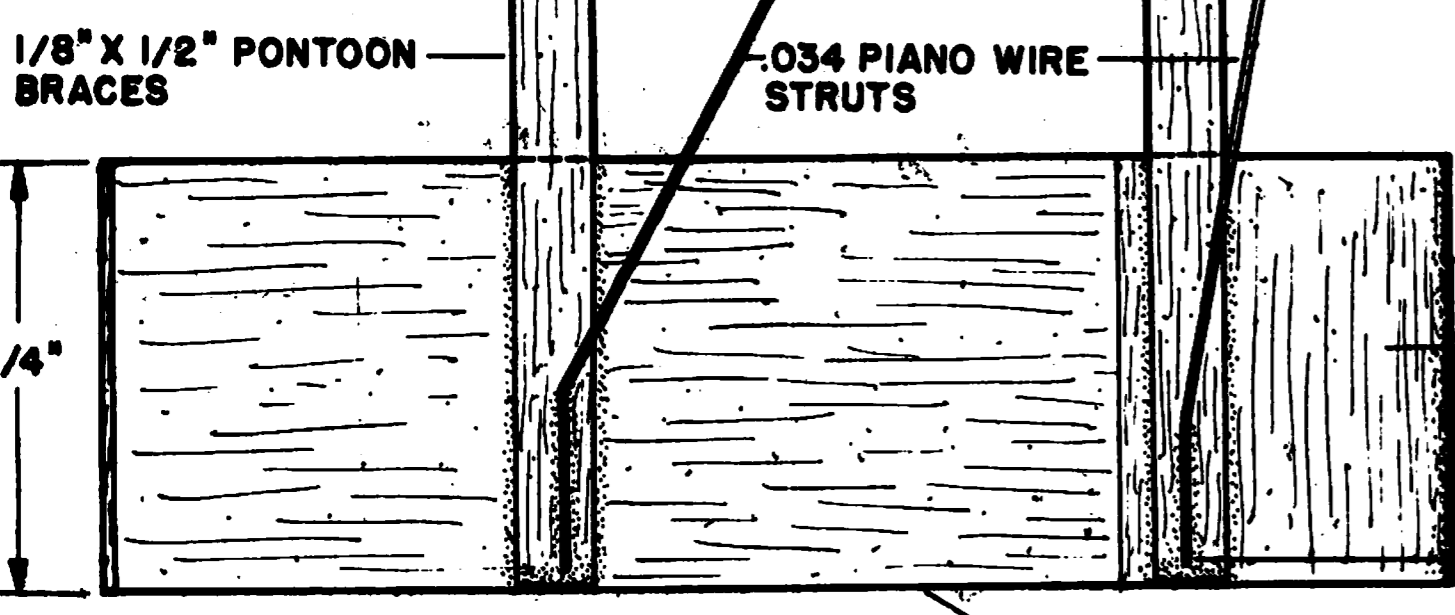


PROP CONSTRUCTION
① CUT OUT BOTTOM TO THIS OUTLINE.
② CUT OUT SIDES TO THIS OUTLINE
③ FINISH CARVING IN CONVENTIONAL MANNER
ALL MEASUREMENTS TO CENTERLINE OF FUSELAGE

REAR PONTON DETAIL



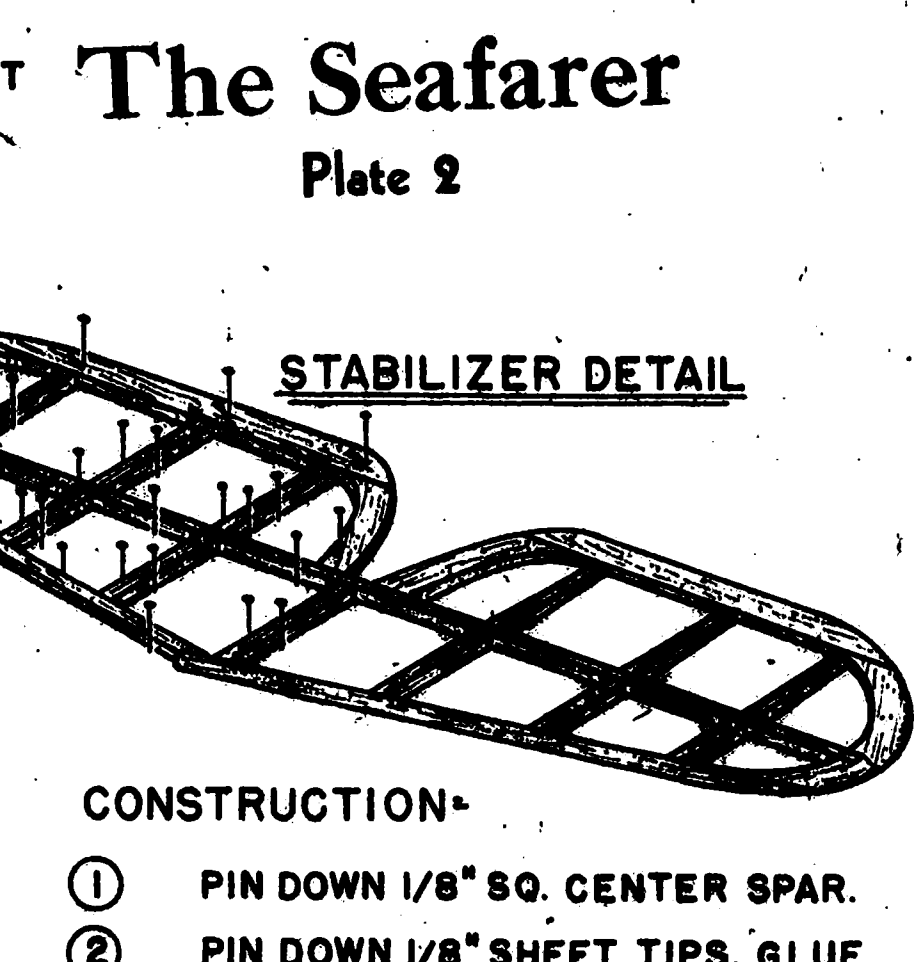
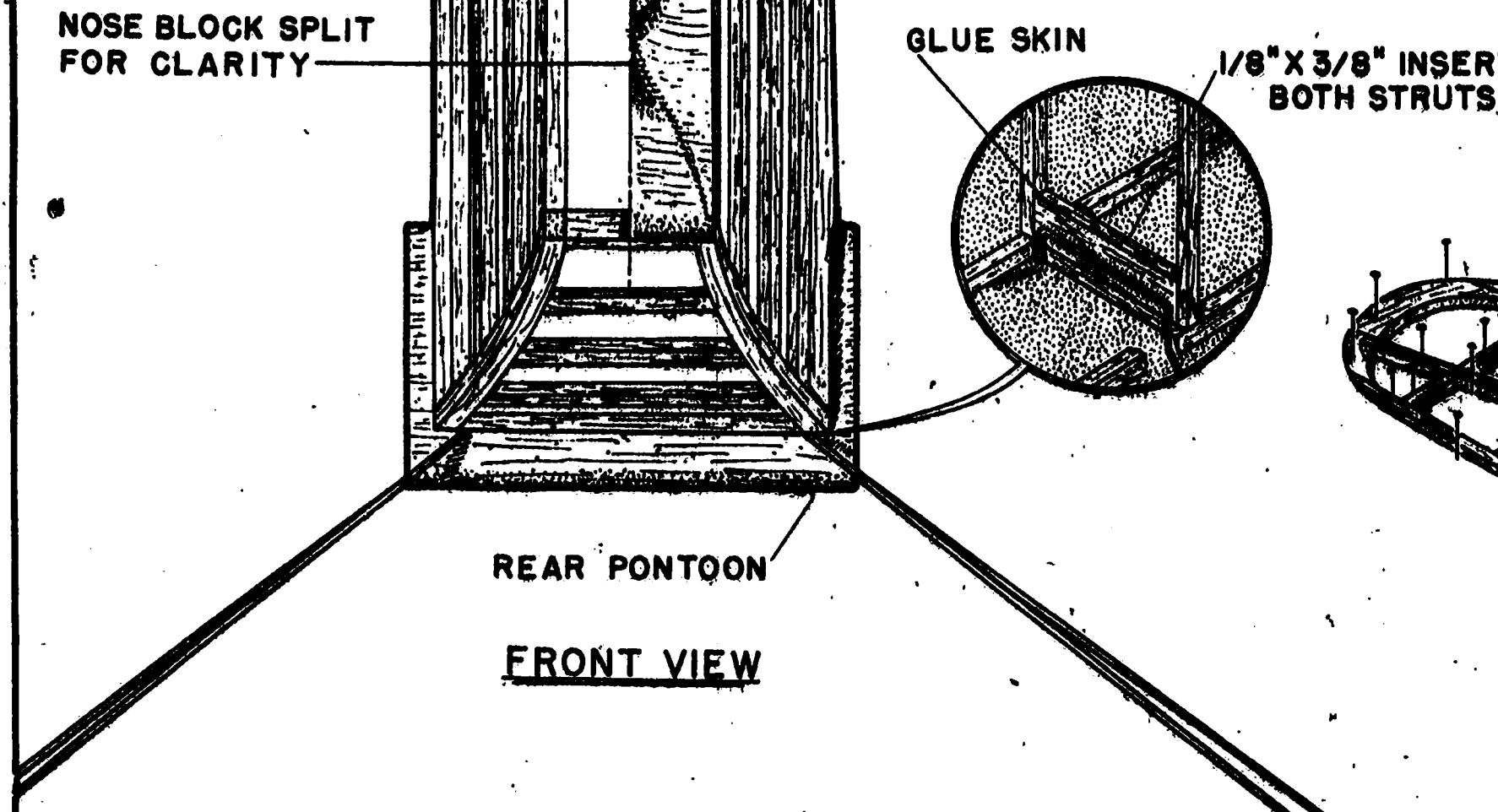
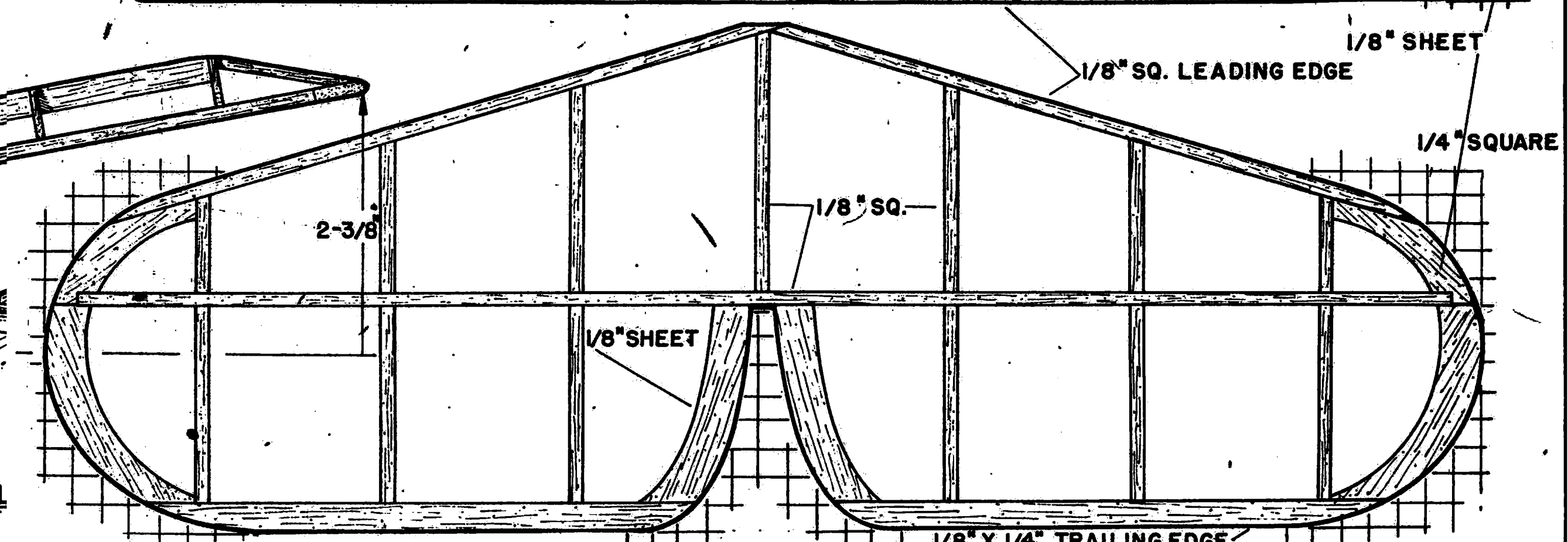
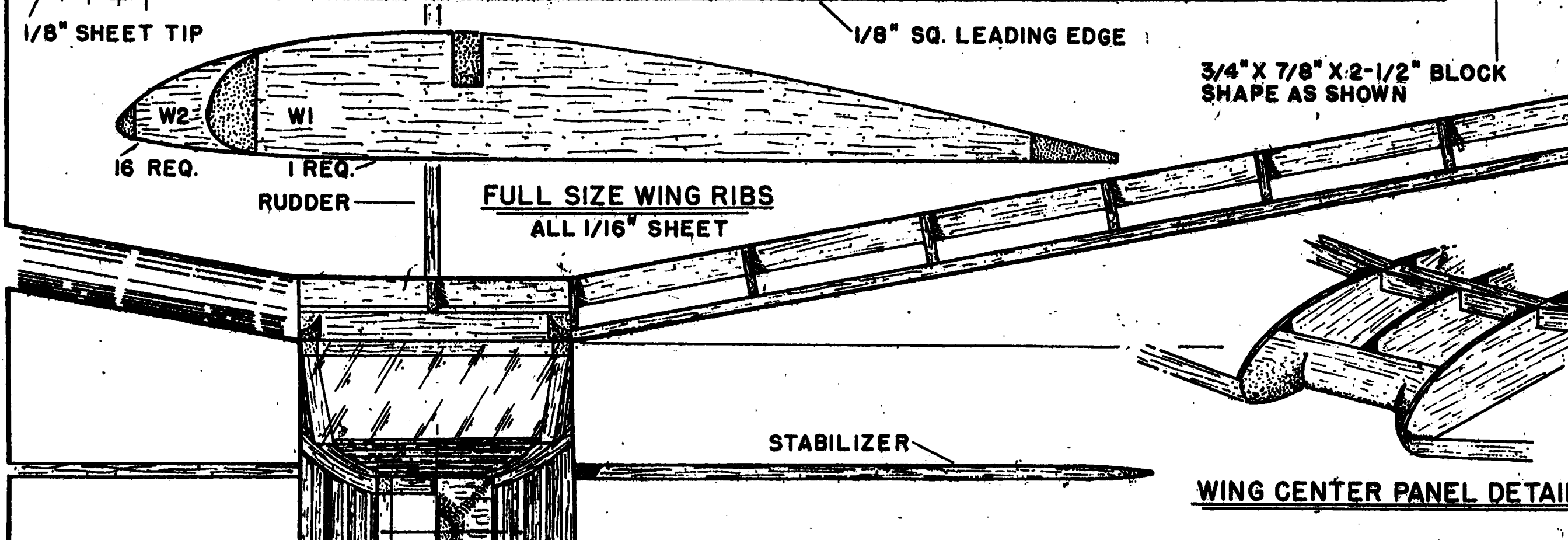
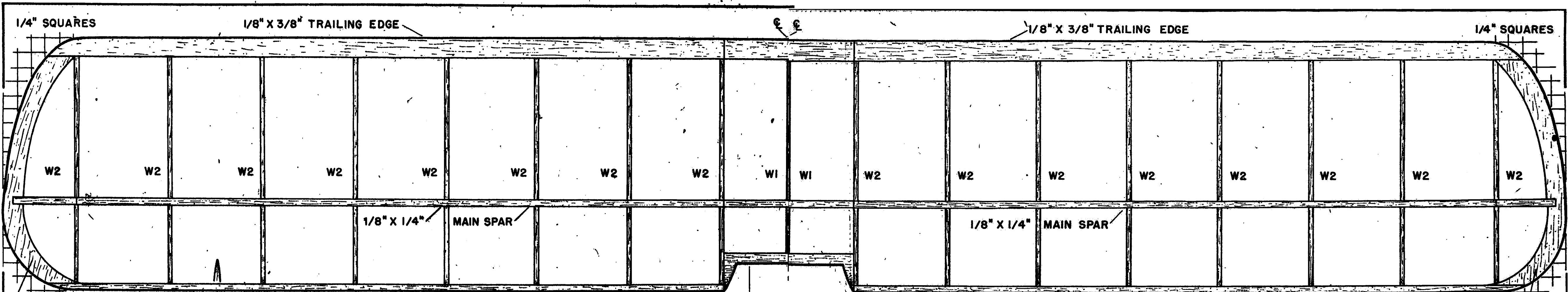
SMALL WASHER GLUED TO NOSE BLOCK



The Seafarer
Plate 1 (ctd.)

SCALE - ALL HALF SIZE

SCHRODER



The Seafarer
Plate 2 (ctd.)

The Seafarer
Plate 2

- CONSTRUCTION-**
- ① PIN DOWN 1/8" SQ. CENTER SPAR.
 - ② PIN DOWN 1/8" SHEET TIPS, GLUE TOGETHER.
 - ③ PIN DOWN 1/8" SQ. LEADING EDGE & 1/8" X 1/4" TRAILING EDGE, GLUE TOGETHER.
 - ④ PIN DOWN 1/8" SQ. RIBS AND 1/8" SHEET CENTER SECTION.
 - ⑤ REMOVE FROM WORKBENCH-SAND TO SHAPE SHOWN IN SECTION WITHOUT STRAIGHT PINS.
 - ⑥ COVER WITH RUBBER MODEL SILK-SPAN.
 - ⑦ WATER DOPE, HOLD BETWEEN FINGERS WHILE DRYING. COAT WITH 2 COATS THIN CLEAR DOPE.
 - ⑧ CEMENT STABILIZER TO FUSELAGE. RUDDER IS MOUNTED ON STAB.

