

60'686'819 calculated drives - the most used setup tool



(index.htm)



(https://www.facebook.com/groups/eCalc)



(https://twitter.com/intent/user?screen\_name=eCalc\_e)

YouTube 675

Welcome Cyrus

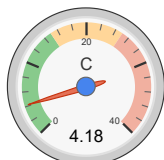
Membership Expiry: 30/07/19

Logout (/motorcalc.php?siteokaction=logout) - Profile (calcmember/update.php)

all data without guarantee - Accuracy: +/-10%

propCalc - Propeller Calculator News (index.htm#news) | Toolbox (index.htm#toolbox) | Easy View (motorcalc\_mobile.php) | Help (calcincluide/help/propcalcelp.htm) | Submit Specs (calcmember/submitmotor.htm) | Language: english

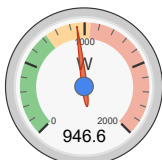
General, Battery Cell, Controller, Motor, Propeller input fields and dropdown menus for model weight, motor configuration, etc.



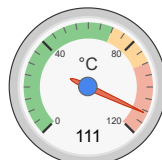
Load:



Mixed Flight Time:



electric Power:



est. Temperature:



Thrust-Weight:



Pitch Speed:

Remarks: • the prediction of the motor case temperature is critical (>80°C/175°F). Risk of overheat, please check!

Summary table with columns: Battery, Motor @ Optimum Efficiency, Motor @ Maximum, Propeller, Total Drive, Airplane. Includes values for load, current, voltage, power, thrust, weight, etc.

share

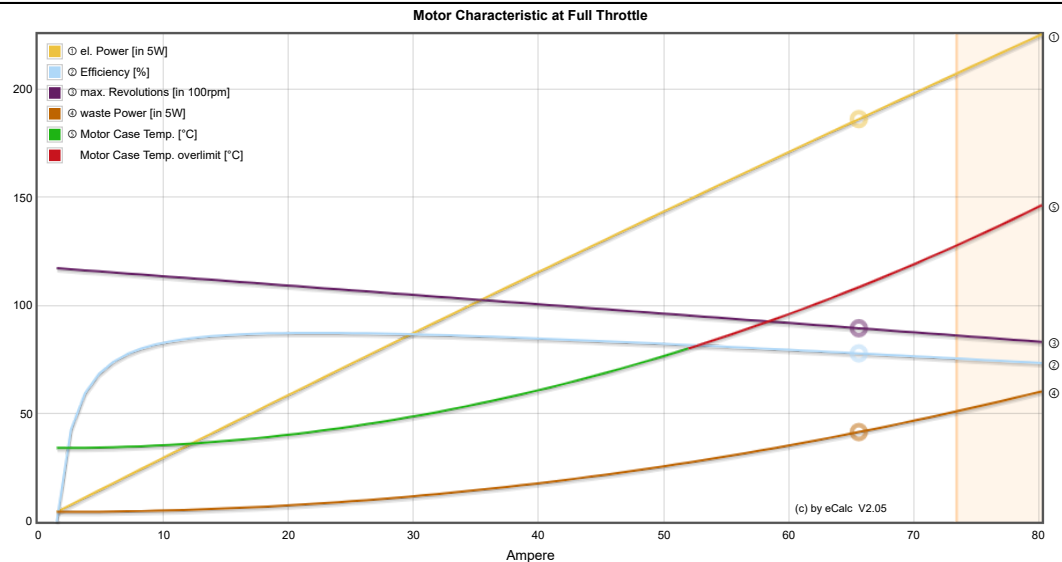
add to >> Download .csv (0) << clear

Motor Partial Load table with columns: Propeller, Throttle, Current (DC), Voltage (DC), el. Power, Efficiency, Thrust, Spec. Thrust, Pitch Speed, Speed (level), Motor Run Time.

We use cookies to enhance your user experience. By continuing to visit our site you agree to our use of cookies. More info (https://www.ecalc.ch/epivacy.htm)

Got it!

4800	48	9.5	14.7	139.2	82.8	1148	40.5	8.2	0.29	59	36	57	36	85.6
5400	54	13.7	14.7	199.2	82.4	1453	51.3	7.3	0.26	66	41	65	40	59.6
6000	62	19.0	14.7	275.4	81.8	1794	63.3	6.5	0.23	73	45	72	45	43.0
6600	69	25.6	14.6	369.9	81.0	2171	76.6	5.9	0.21	81	50	79	49	31.9
7200	77	33.7	14.6	485.3	80.2	2583	91.1	5.3	0.19	88	55	86	54	24.2
7800	85	43.5	14.5	623.8	79.3	3032	106.9	4.9	0.17	95	59	93	58	18.7
8400	93	55.3	14.5	788.2	78.4	3516	124.0	4.5	0.16	102	64	101	62	14.7
8882	100	66.8	14.4	946.6	77.4	3931	138.7	4.2	0.15	108	67	106	66	12.2



**Important Note:**  
 Before flight recheck your max. current! If your Current, el. Power or RPM are over the manufacturers limits your motor, controller and/or battery may take damage! **Verify before flight by measurement!**

for printing use Landscape format  
 \* The manufacturer limitation is NOT monitored  
 \*\* Testdata with reduced accuracy

© by Solution for All Markus Müller - www.eCalc.ch - info[at]eCalc.ch  
 Impressum (/impressum.htm) | Terms & Conditions (/calcmember/agb\_eCalc\_en.pdf) | Privacy (/eprivacy.htm) | Cookie (/eprivacy.htm)  
 Version: P7.16a, 25.3.19 / Data: 01.4.19 with 9238 Motors  
 translated to english by Markus Mueller  
 Website Hit Counter  
 \*\*\* \*\*