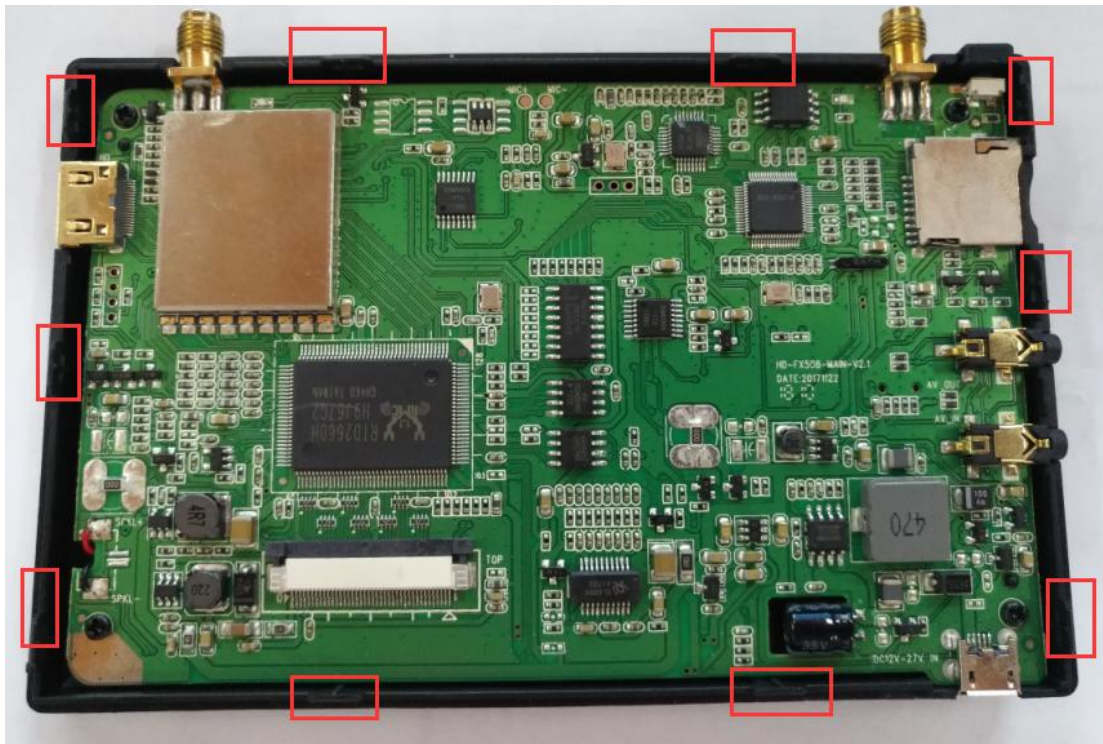
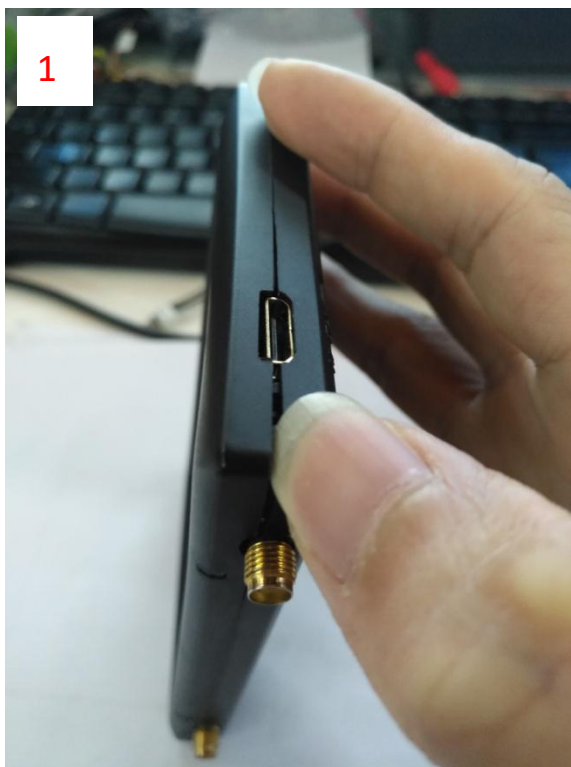


**Step 1:** Disassemble the monitor.

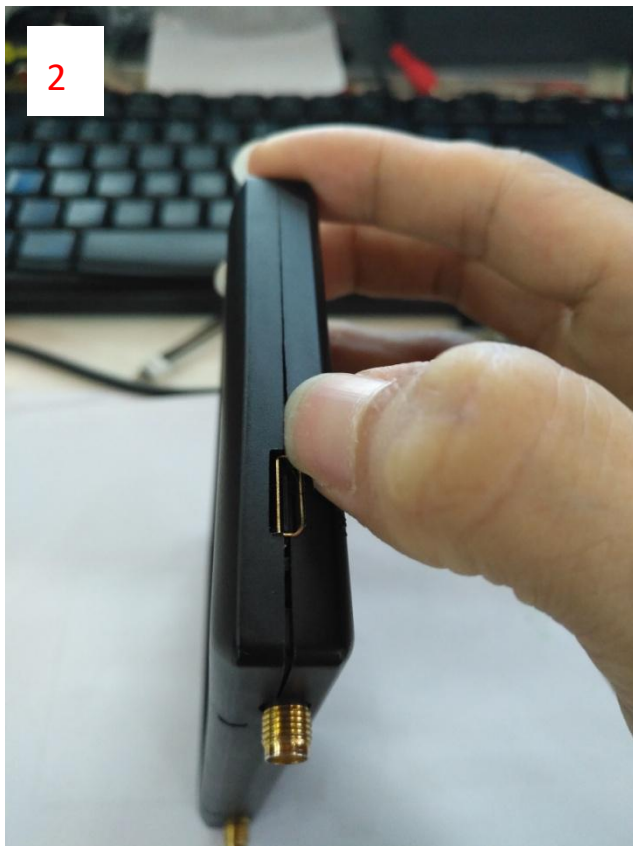
1. Know the location of the buckle.



2. Insert the first buckle from this corner with a nail or tools.



3. Then open the buckles one by one as following positions.



4



5



6



7



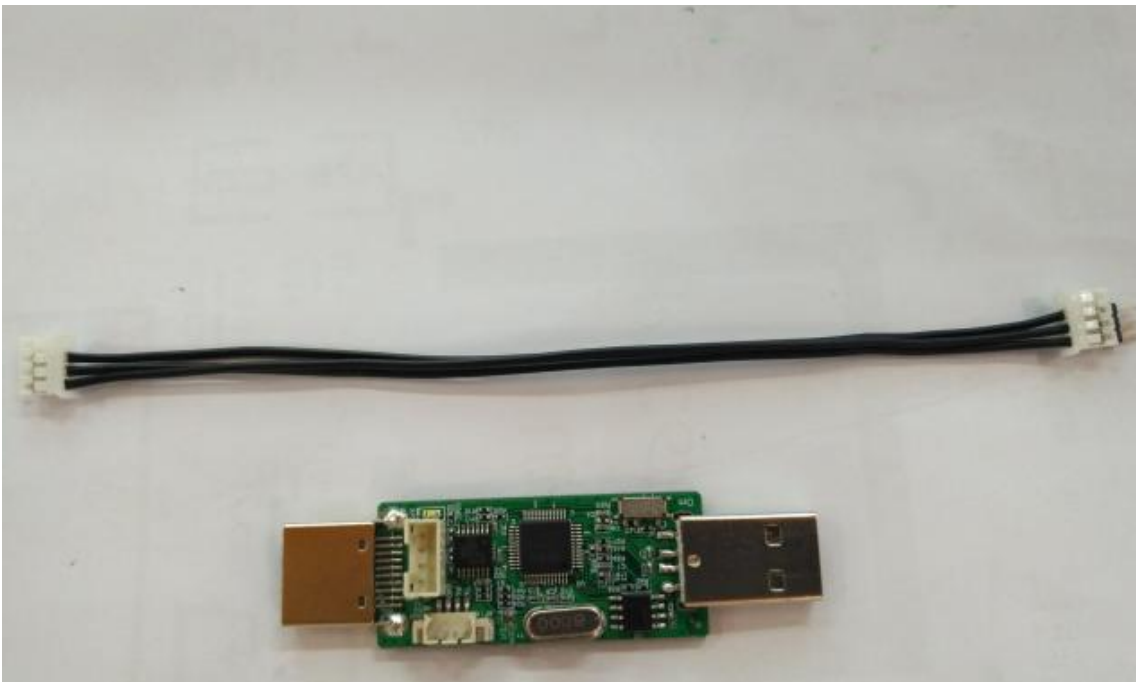


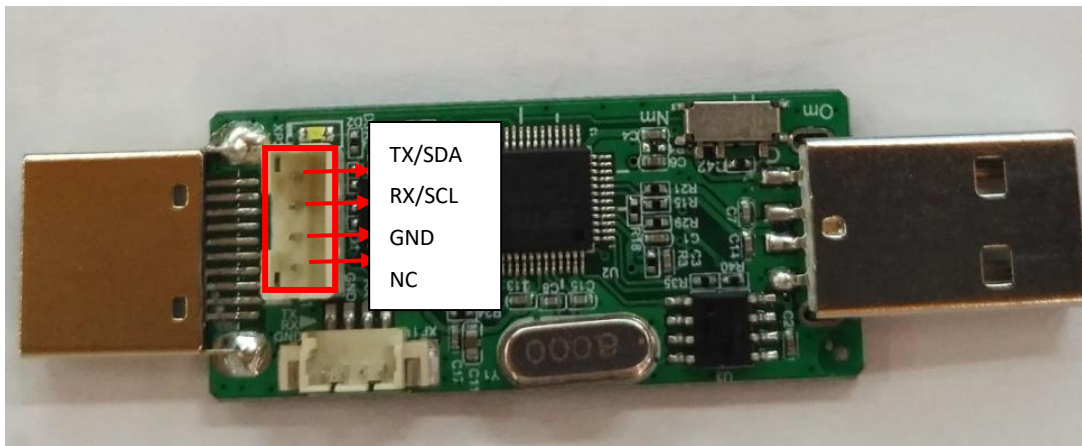
8



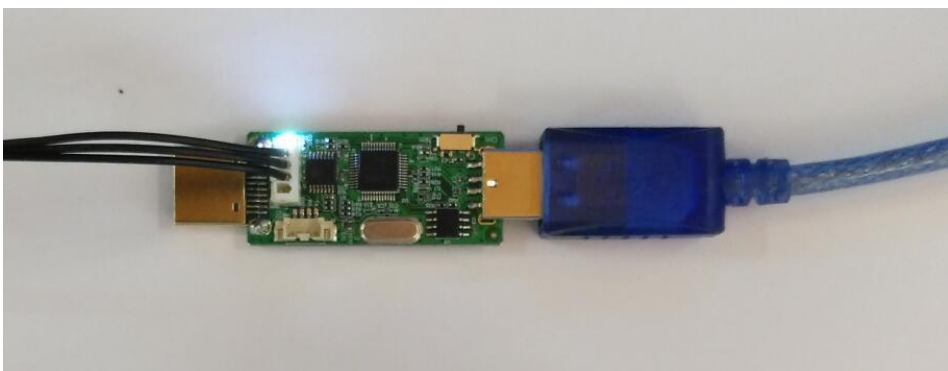
The disassembly is finished.

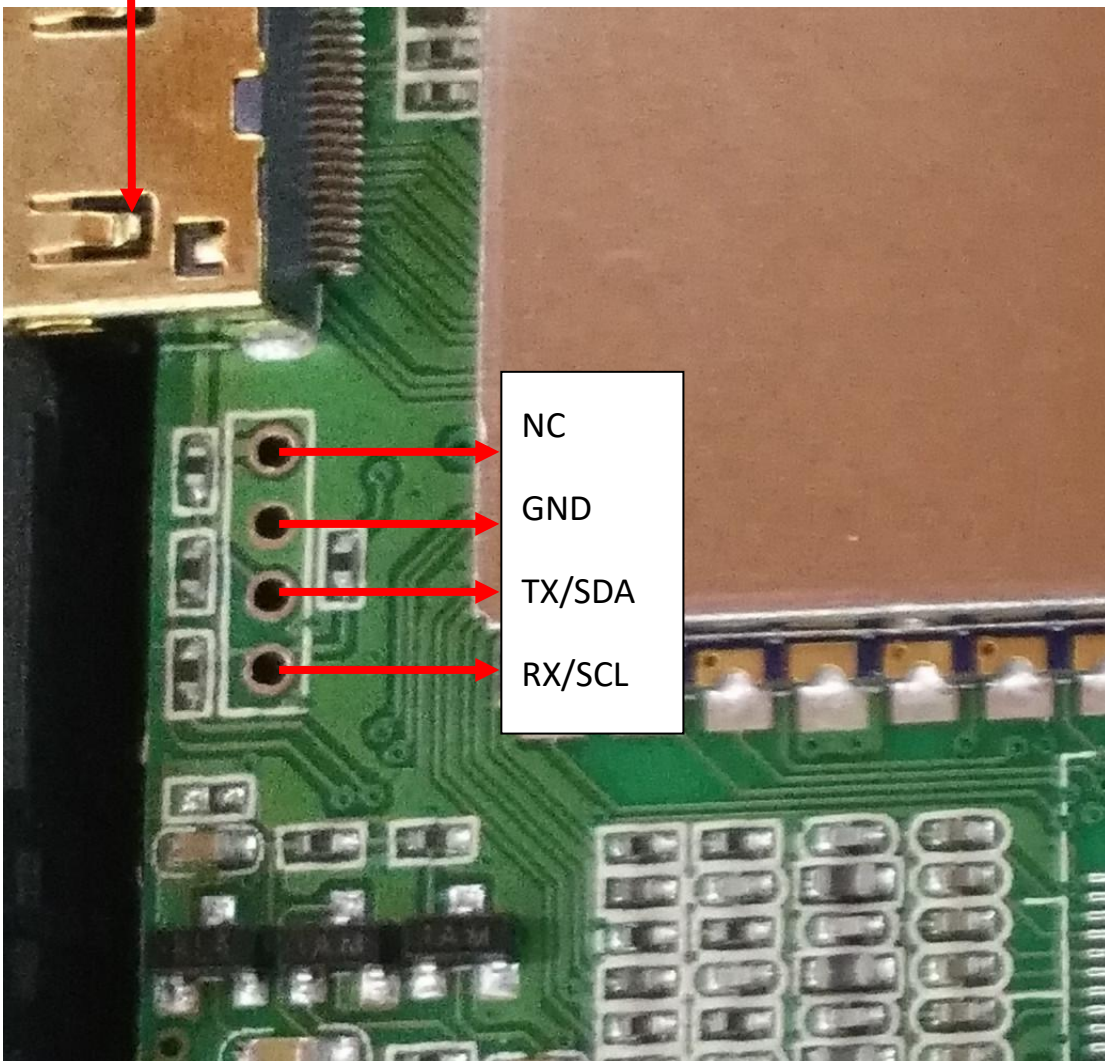
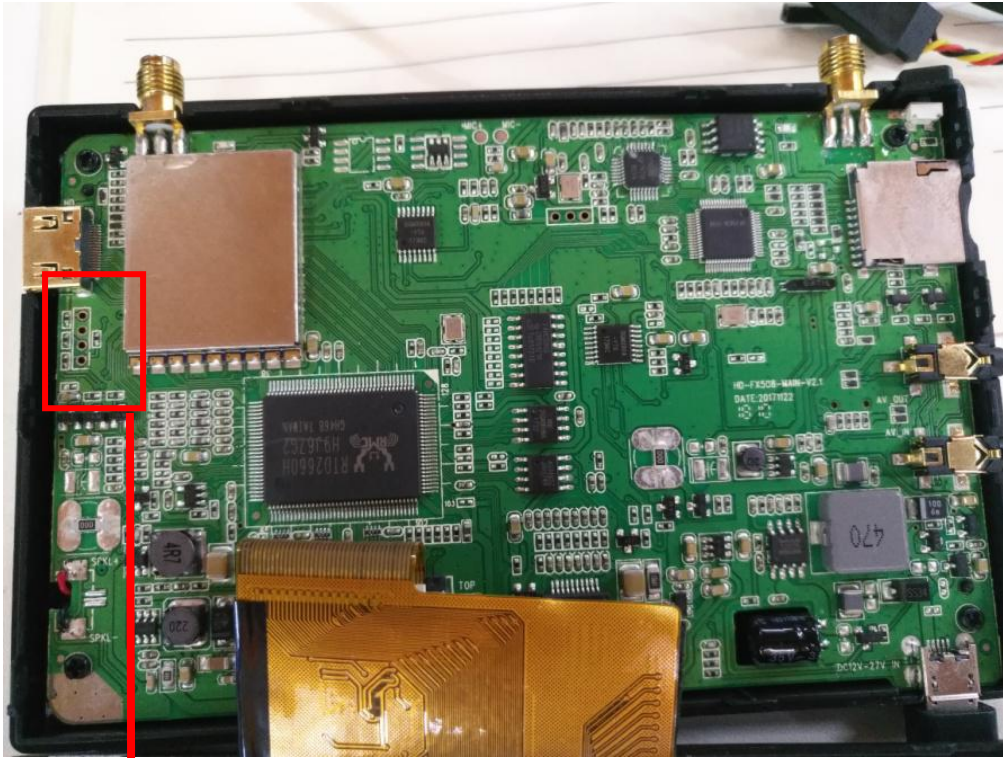
**Step 2:** Connect the upgrade tool.



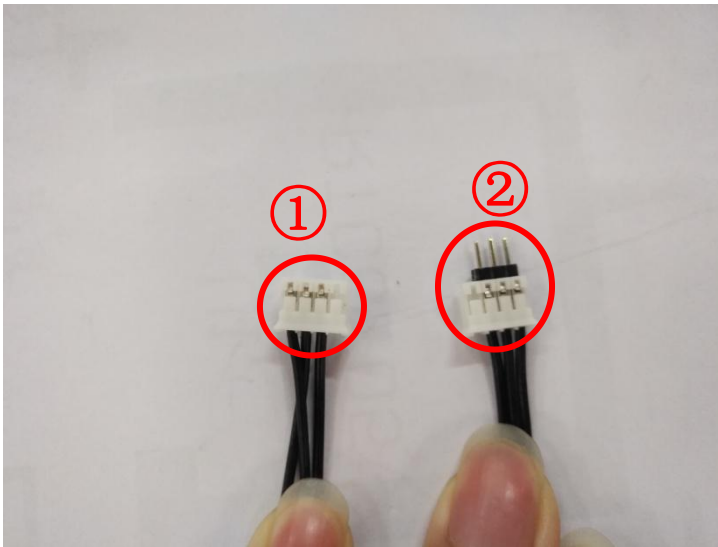


Connect the upgrade tool to the computer



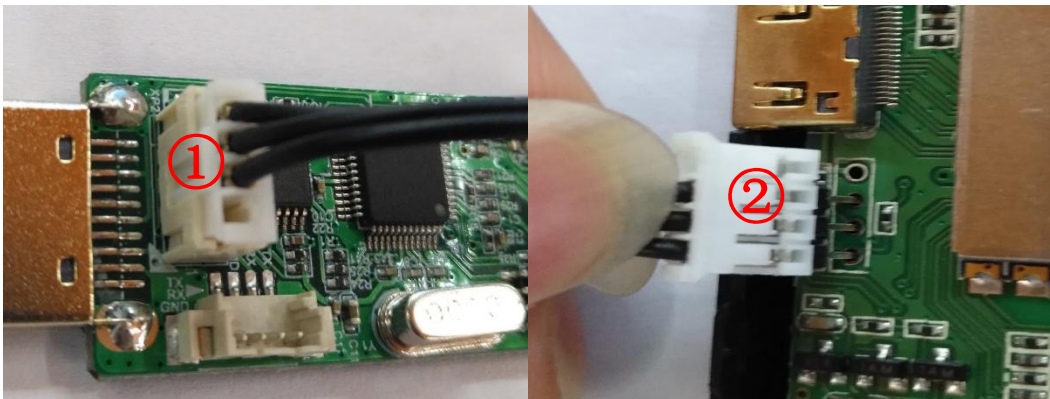




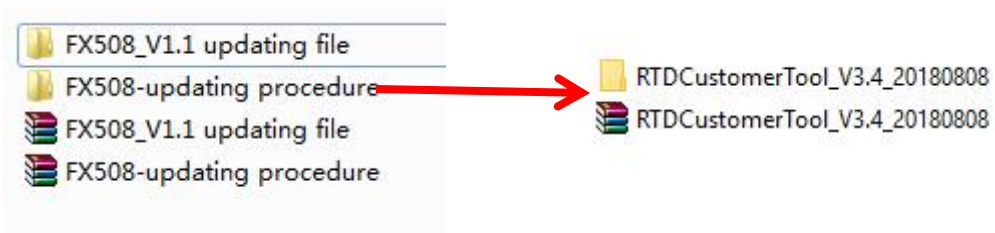


Connect the upgrade tool to the monitor.

① for updated tool    ② for monitor board

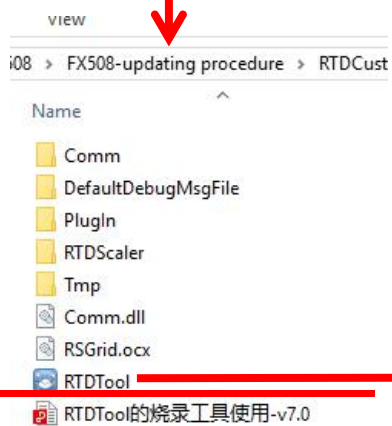
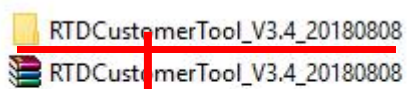
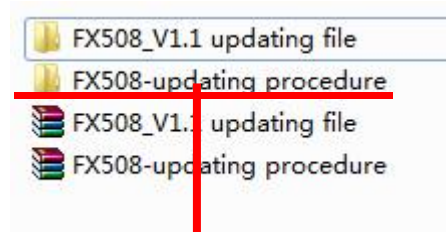


**Step 3:** Download below upgrade files and unzip them



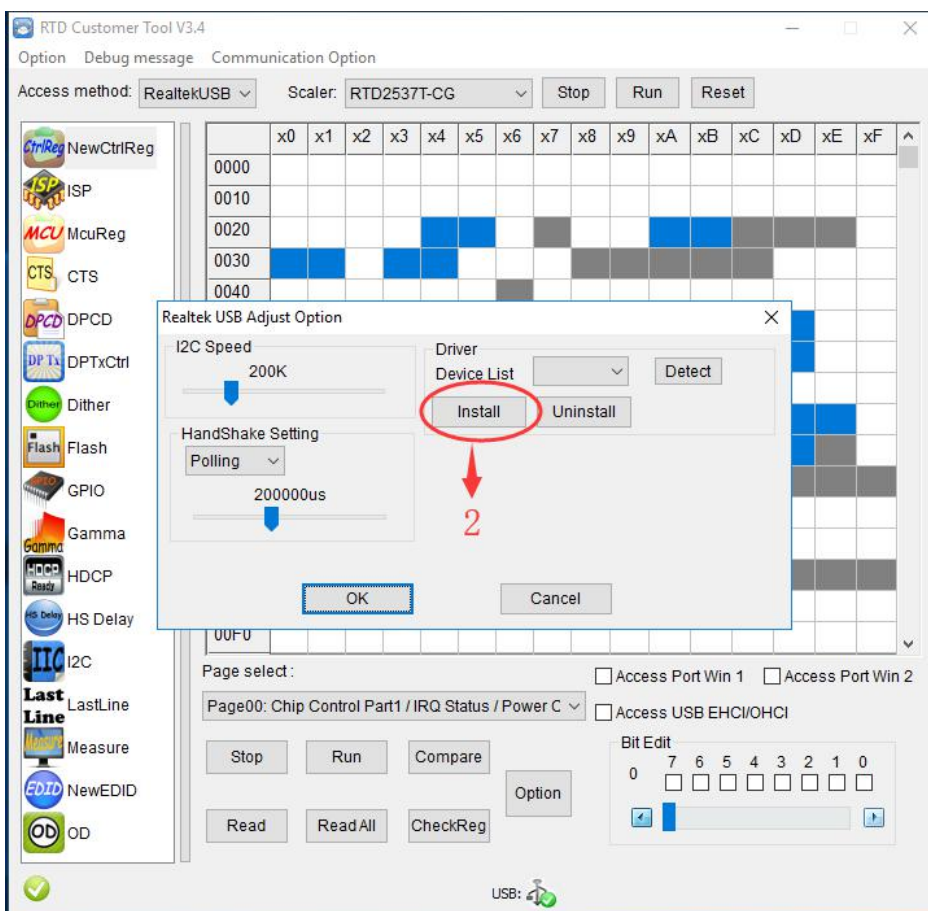
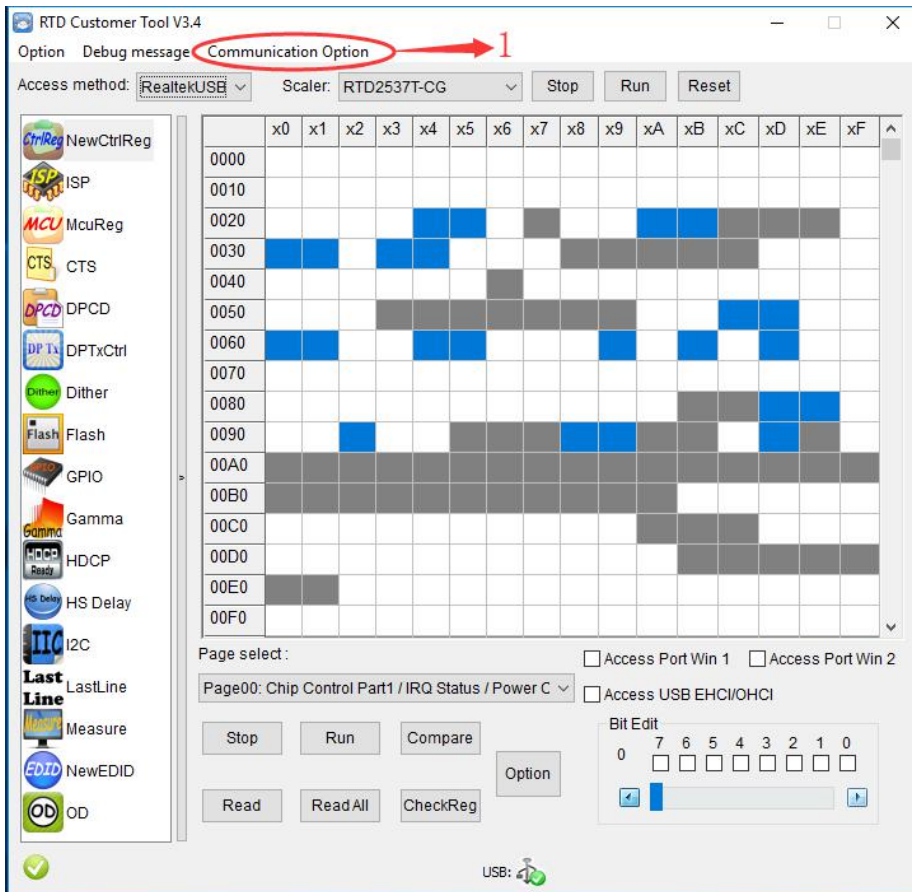


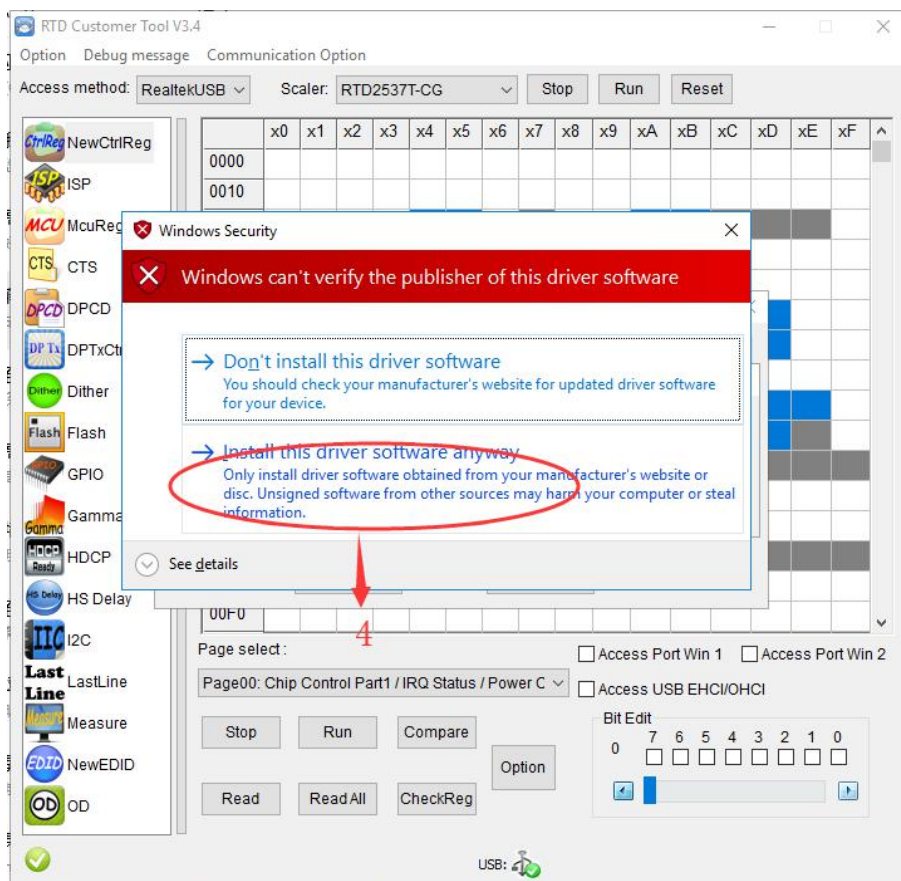
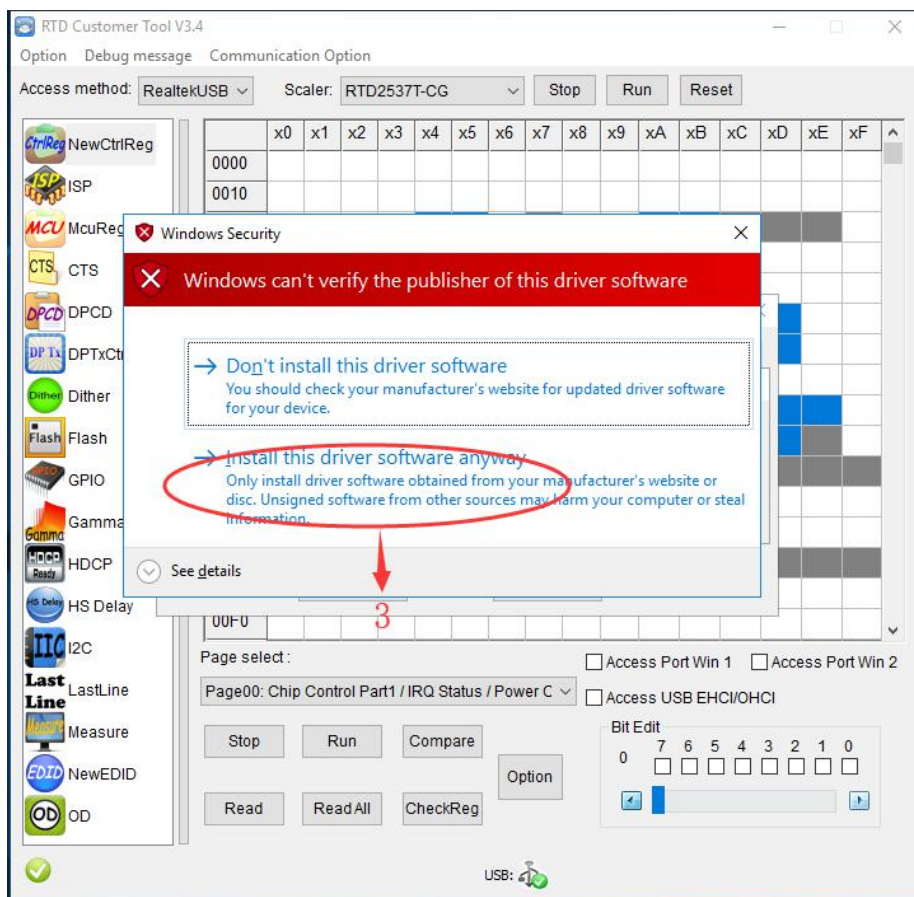
#### Step 4: how to use the upgrade program



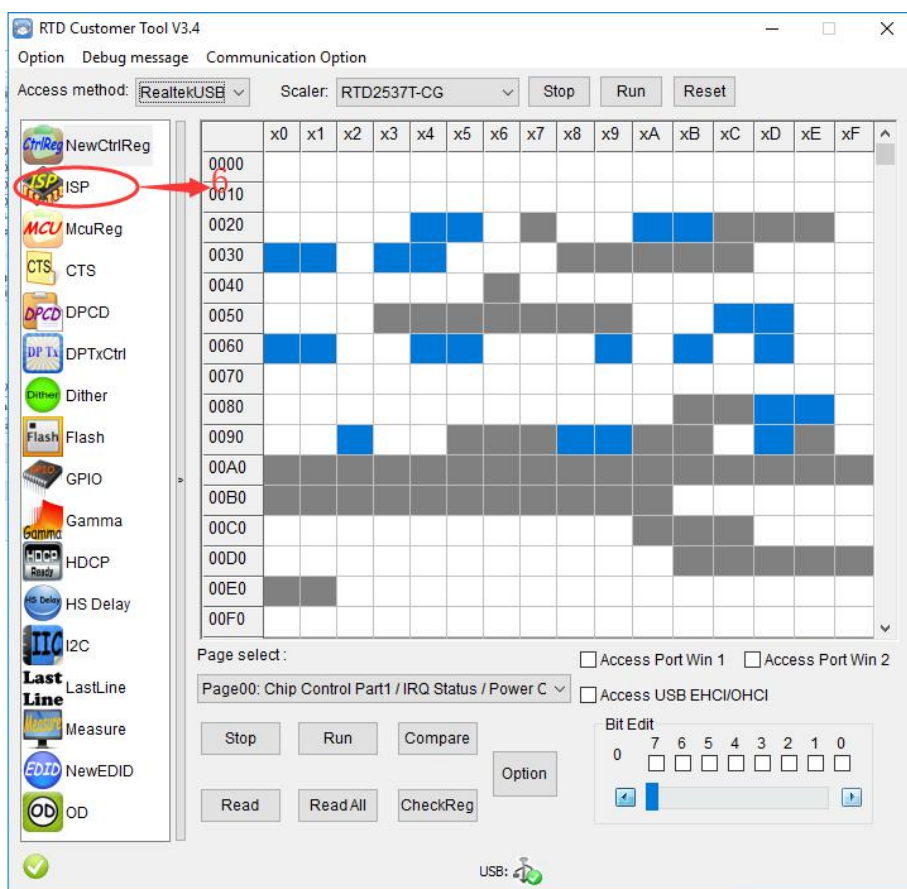
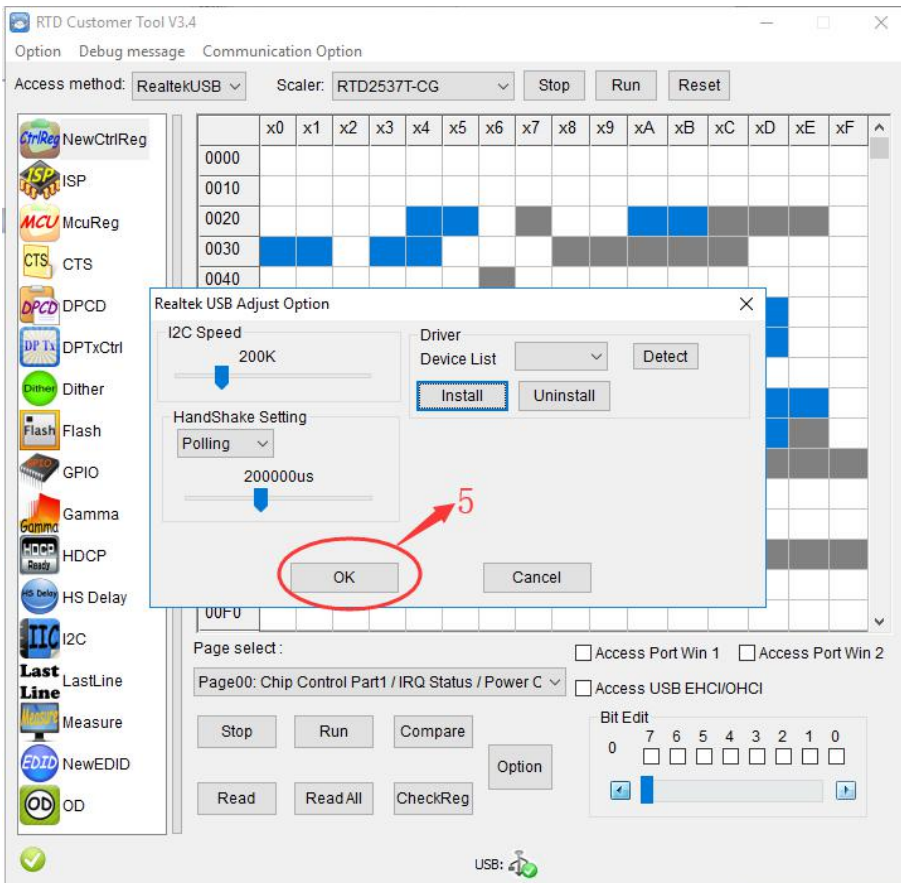
Open  
the "RTDTool  
"

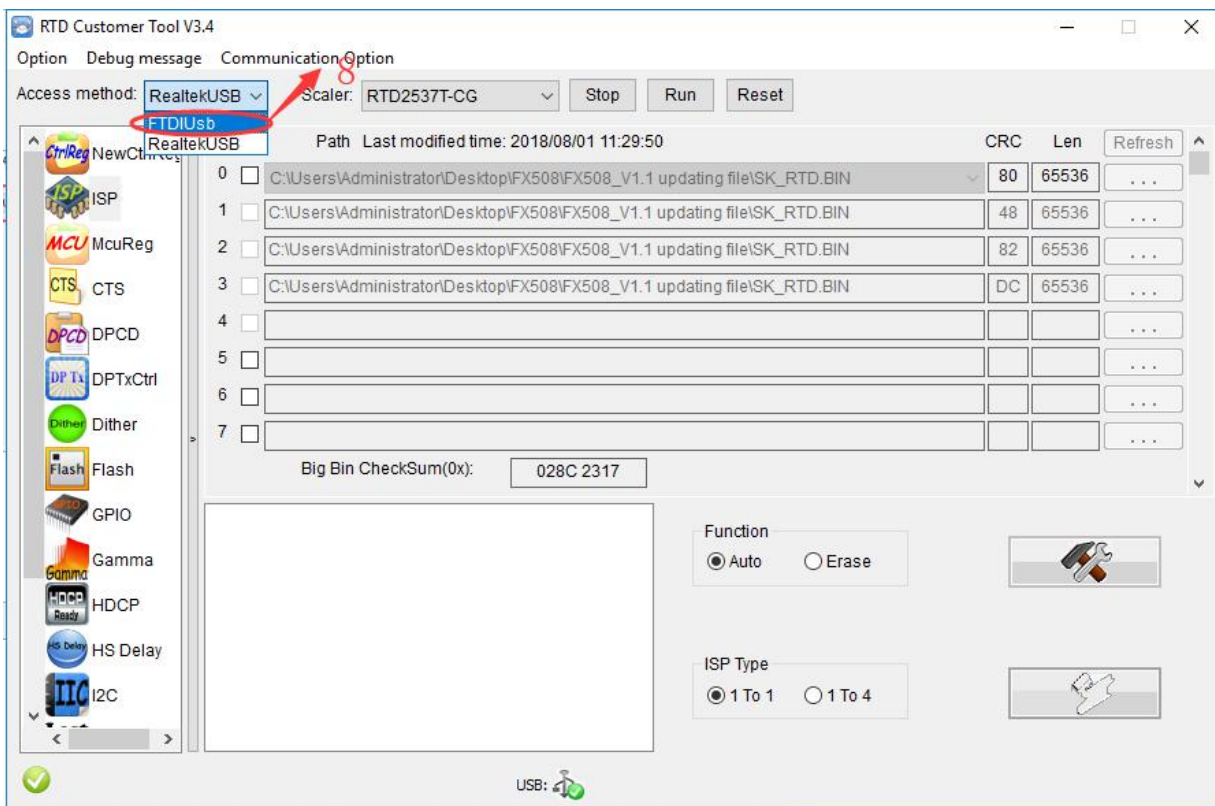
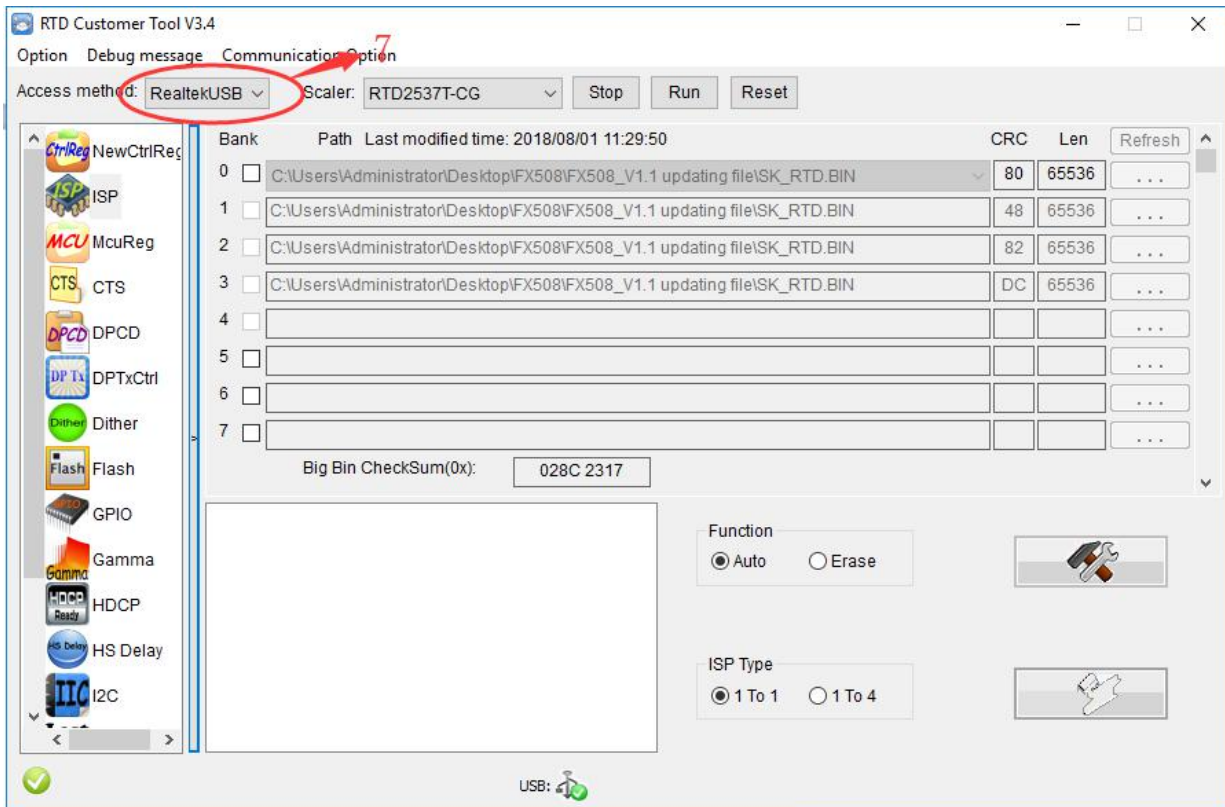
Click from 1-14 and follow the below instructions step by step

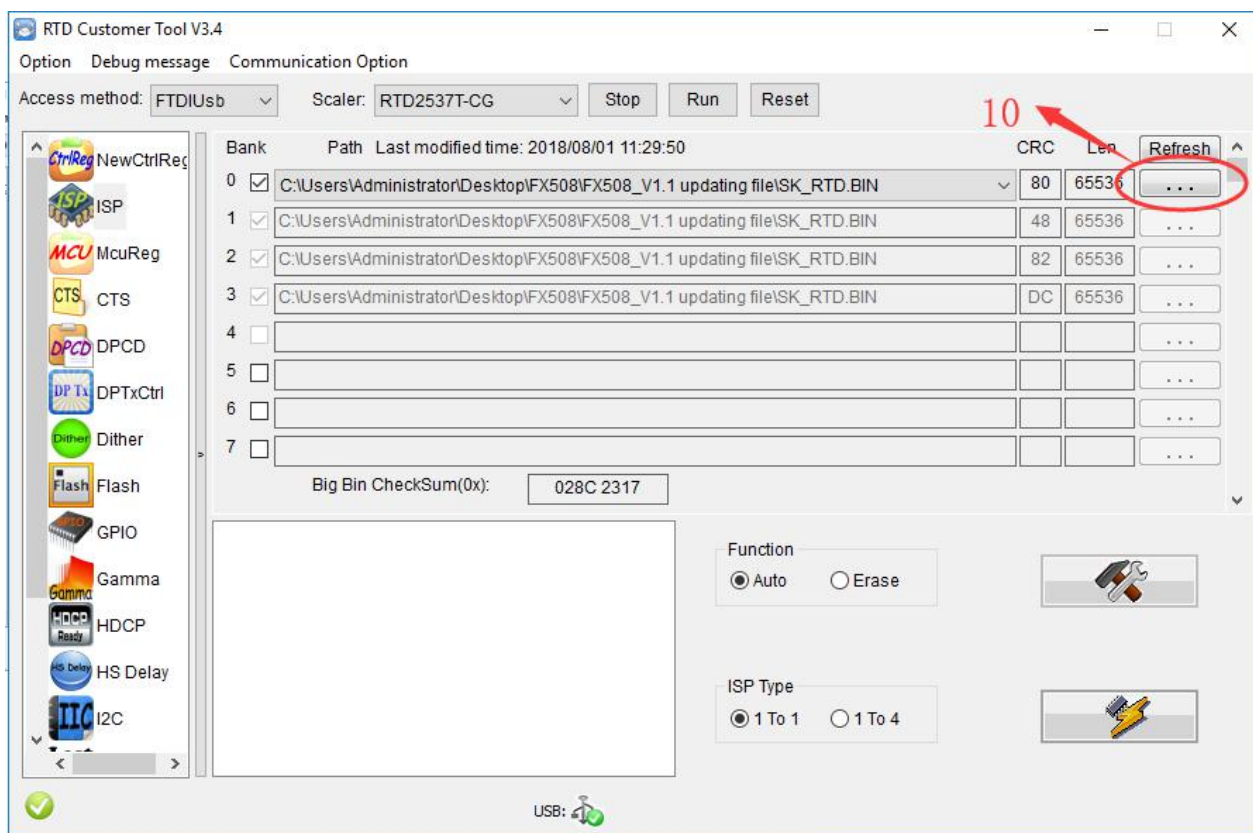
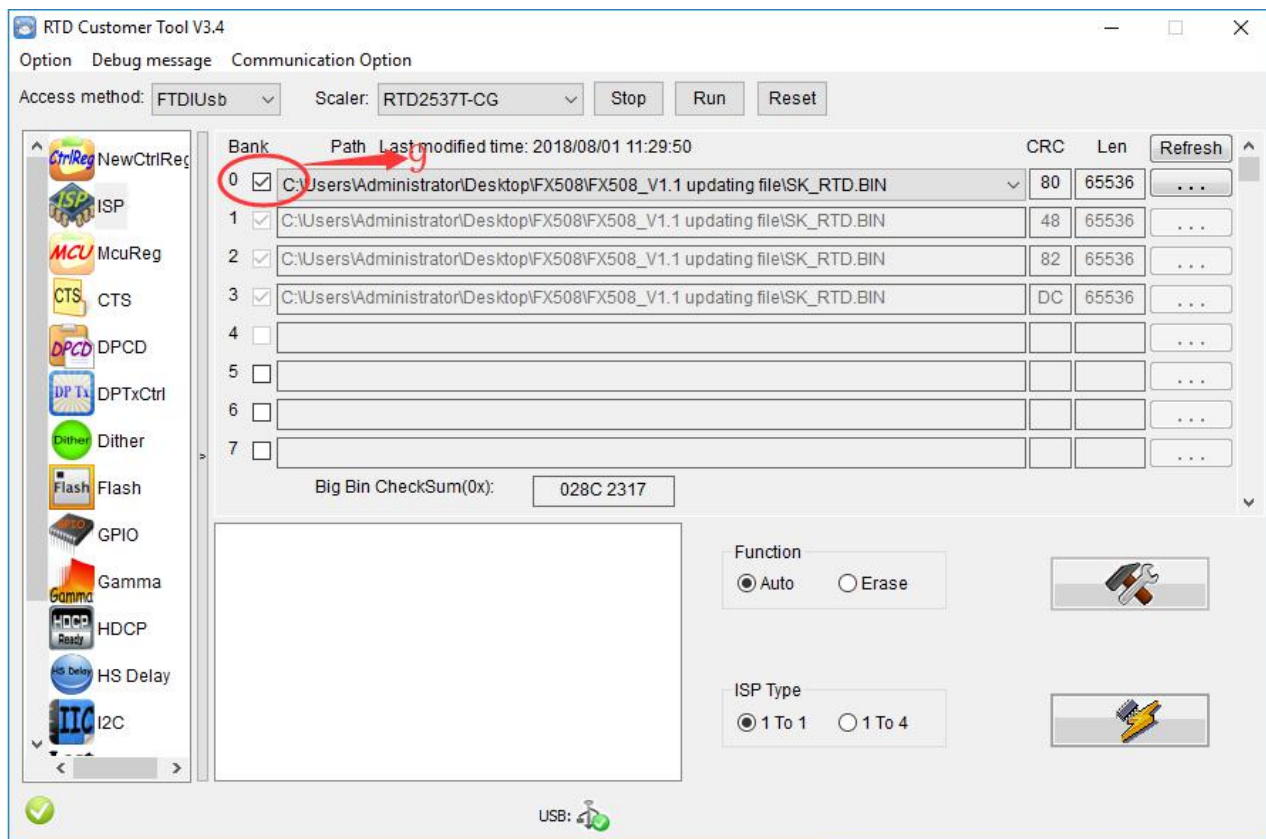




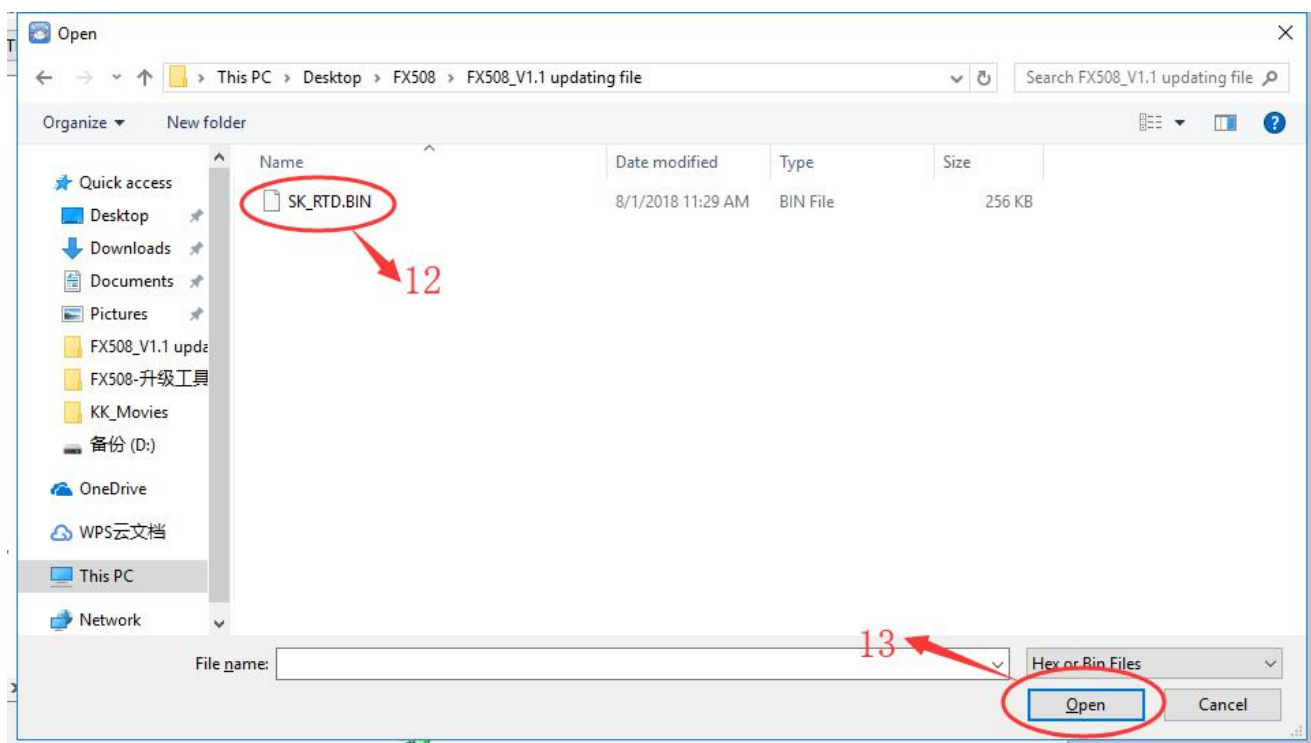
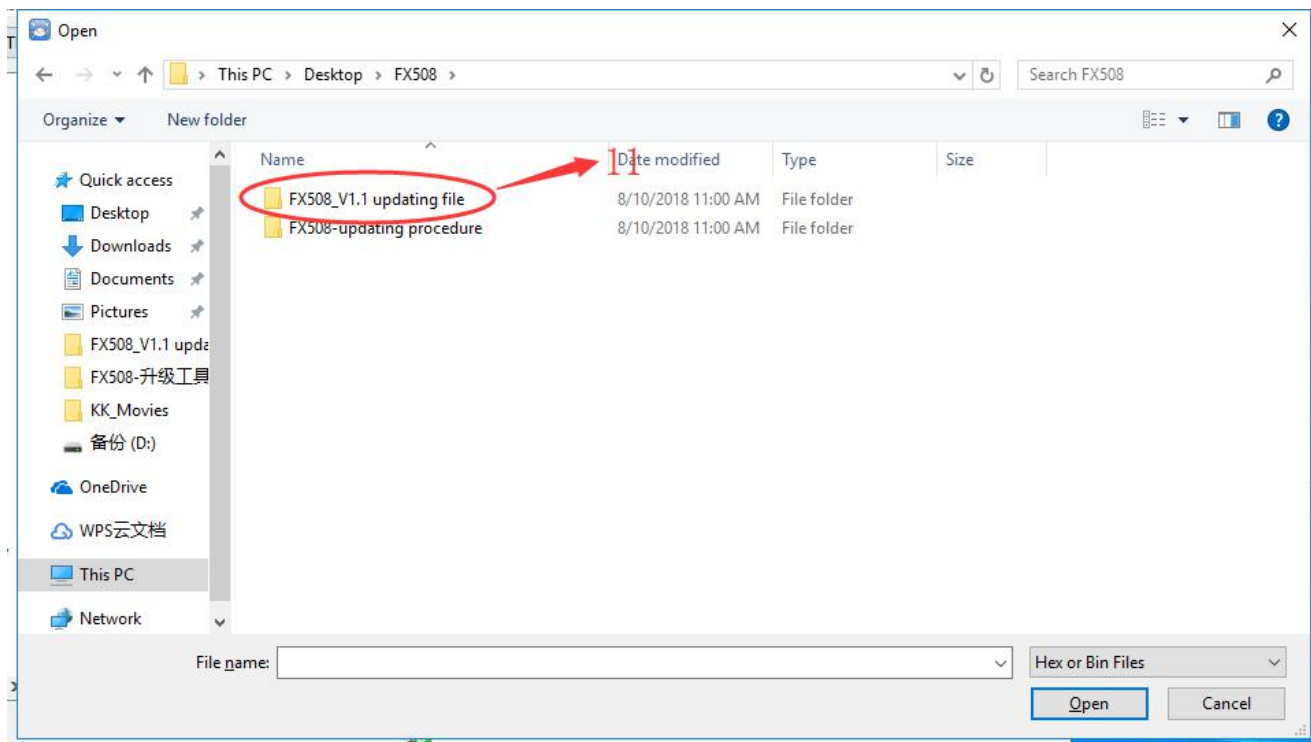


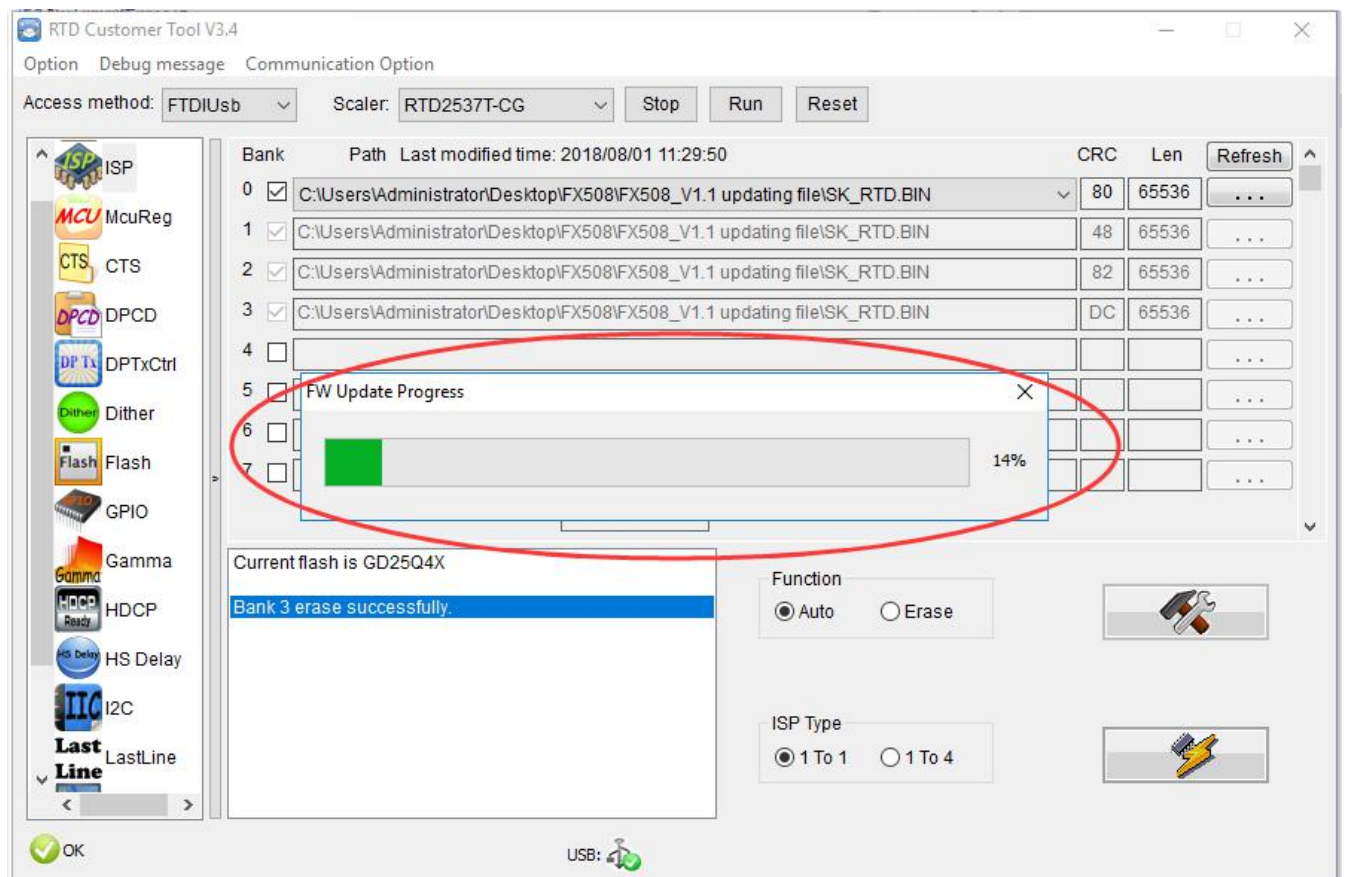
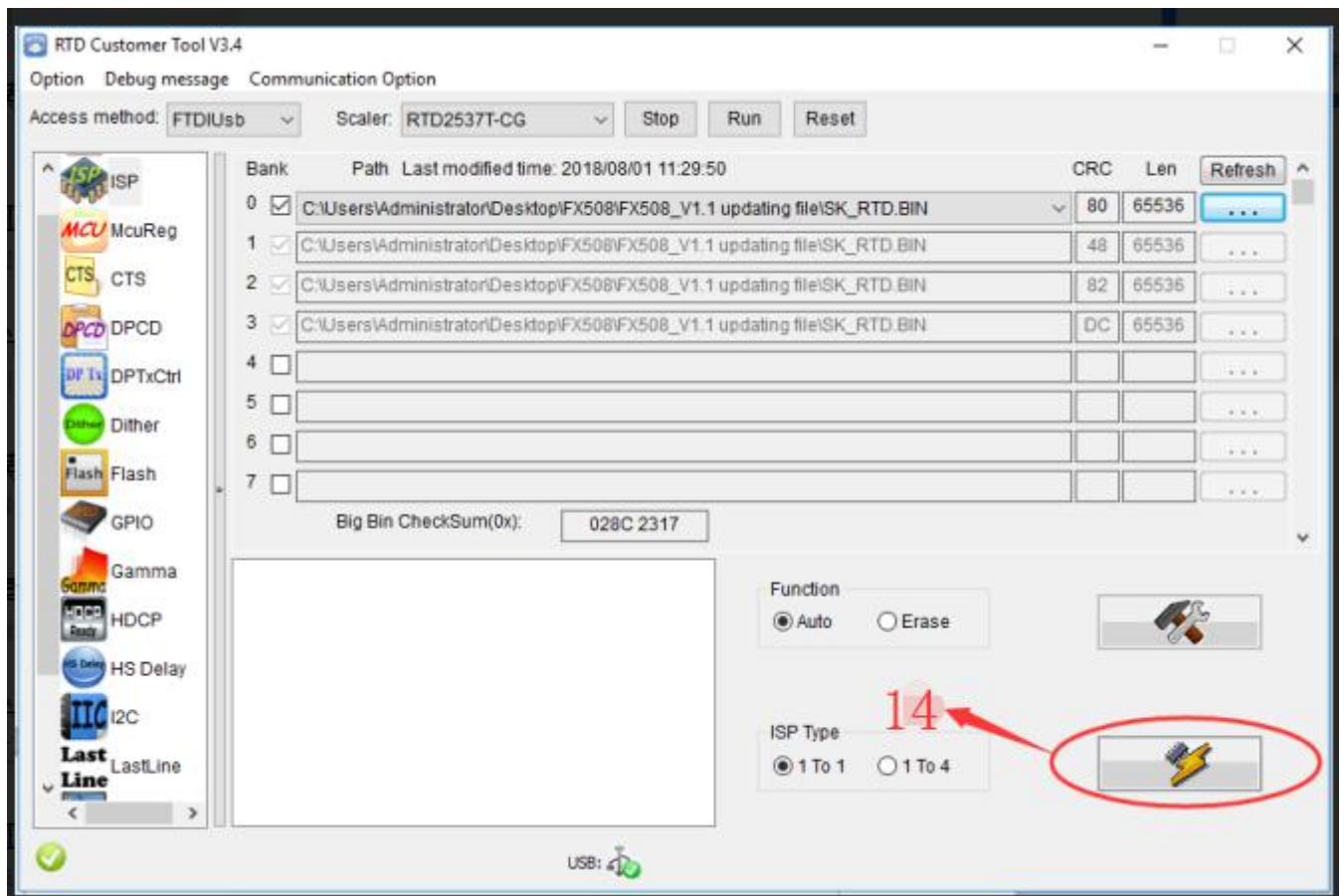


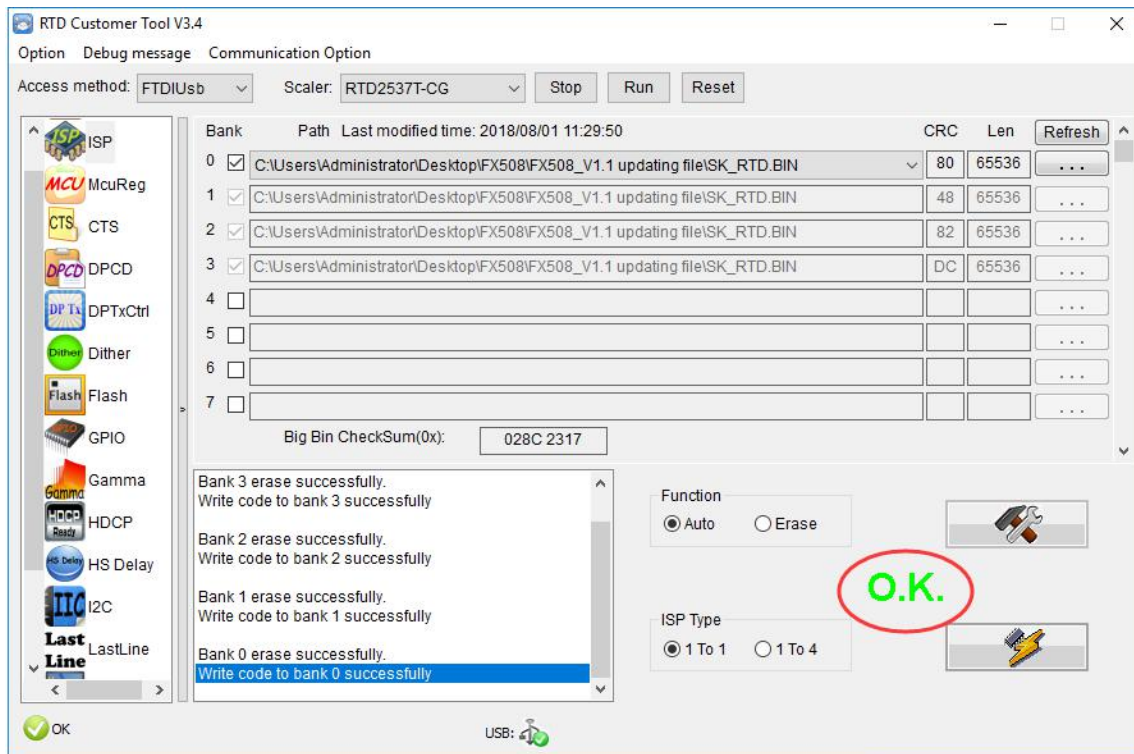












**Note: During the upgrade, the connection cannot be interrupted and the monitor cannot be powered off. Please make sure the connection is solid and the power supply is normal.**



**Step 5:** After successful upgrade, the monitor screen will be automatically shut down.

Then power on the monitor screen, the opening logo will be changed into V1.1 version for successful upgrade.



**Step 6:** Finally, the front and the back shell buckles need to be positioned correctly one by one. Upon matching, pls press down only the shells, do not press down the screen, otherwise screen will be damaged.

