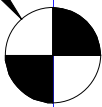
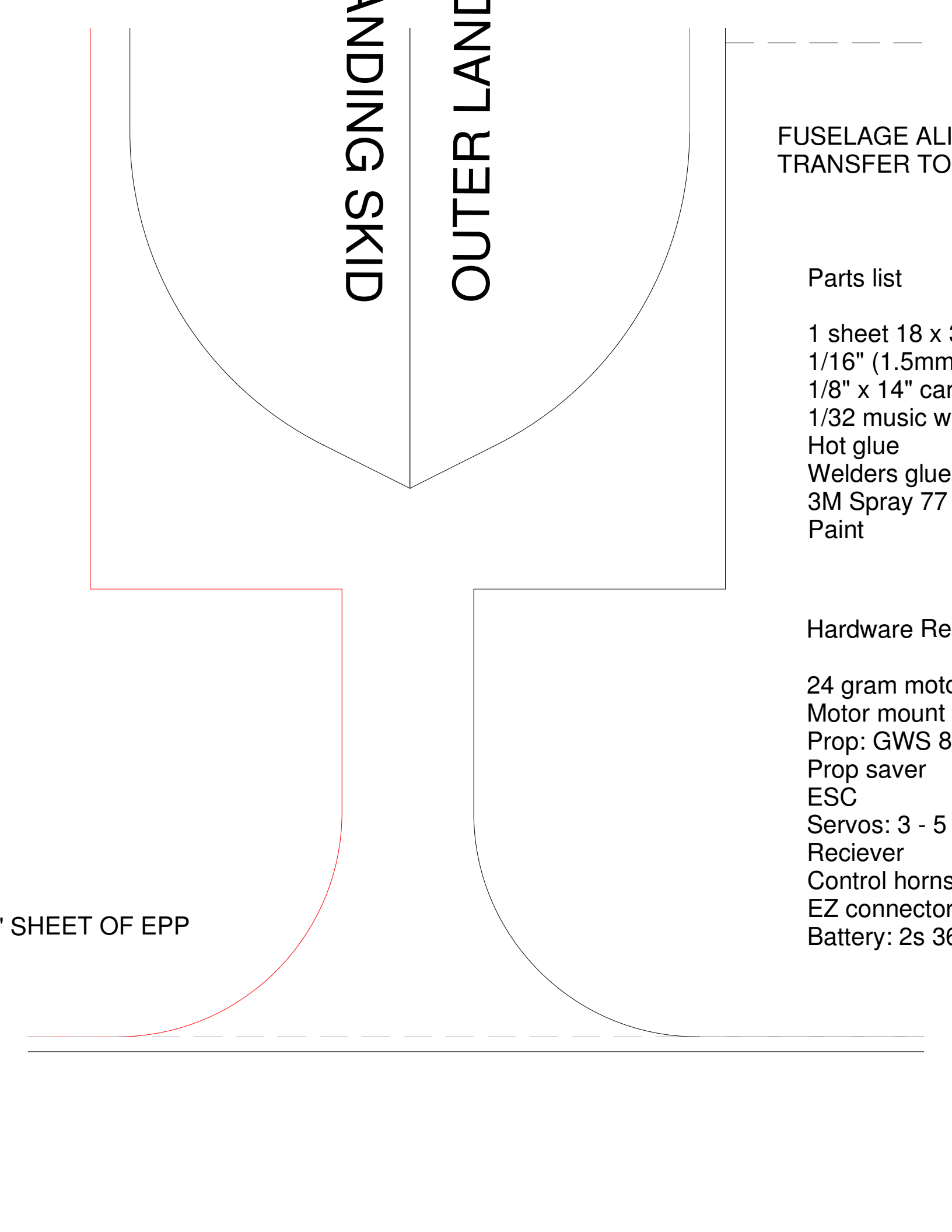


R OF
TY



KF STEP PANEL

GRAY DASHED LINE REPRESENTS 18" X 36" SHE



LANDING SKID

OUTER LAND

FUSELAGE ALIGN
TRANSFER TO

Parts list

1 sheet 18 x 5
1/16" (1.5mm)
1/8" x 14" car
1/32 music w
Hot glue
Welders glue
3M Spray 77
Paint

Hardware Re

24 gram moto
Motor mount
Prop: GWS 8
Prop saver
ESC
Servos: 3 - 5
Reciever
Control horns
EZ connector
Battery: 2s 36

1 SHEET OF EPP

ALIGNMENT GUIDES
TO TOP OF PANEL

W

t

18 x 36 1.3# 6mm epp foam.
5mm) carbon rod for control rods.
4" carbon tube for leading edge/prop protector
asic wire for control rod ends and wire hoop skids.

e
s glue
ay 77

re Required:

motor: Blue Wonder motor - 1500kv
ount
WS 8x4 HD
ver

3 - 5 gram servo
r
horns 3 pieces
ectors 3 pieces
2s 360 battery

Specifications:

Wingspan: 18"
Length: 18"
AUW with a 2s 360 battery is 189

PBF

Designed by Leadfeather on RCG
CAD by Dz1sfb on RCGroups.com

29-MAY-2009 - Change A - Added
to accept optional horizontal stab

For Private Use Only
Commercial Rights Reserved

WING AND ELEVON PANEL

s 189 grams or about 6.7 oz.

RCGroups.com
os.com

Added flat to fuselage
stabilizer.

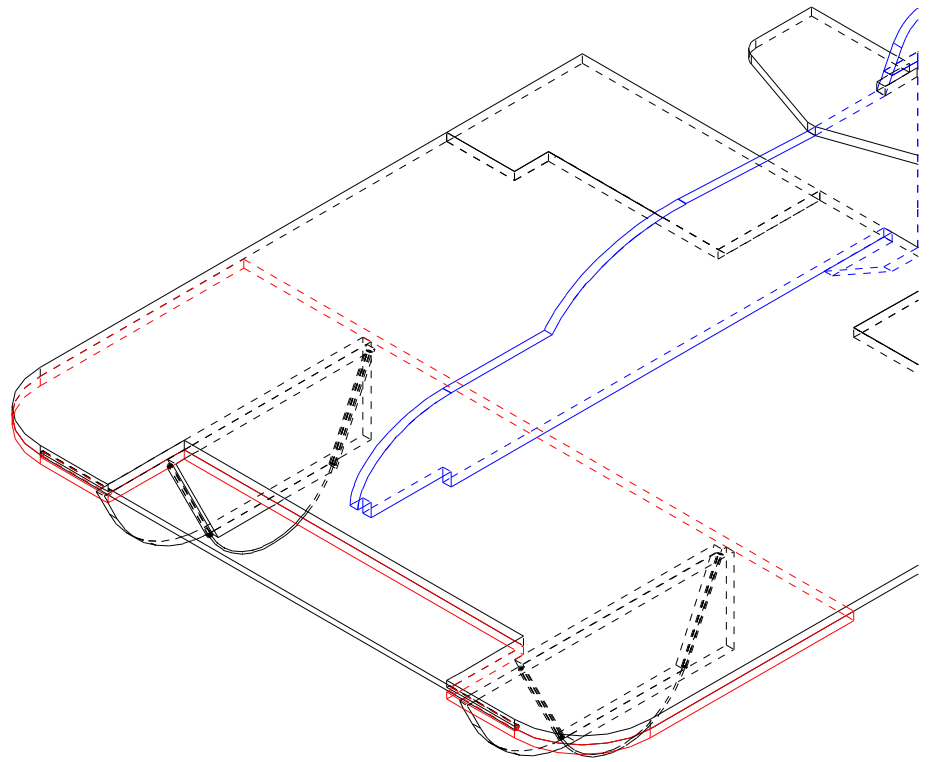
d

FUSELAGE

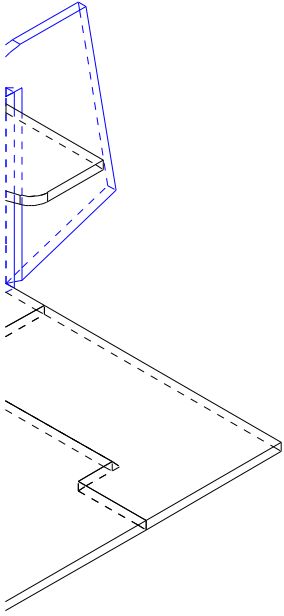
INNER LANDING

INNER LANDING SKID

SHOWN WITH OPTIONAL HORIZONTAL ST



AL STABILIZER



Here is a guide

1. Cut all foam
2. Hinge all co
3. Laminate lo
4. Optional: do
5. Install fusel
6. Install foam
7. Hook up ele
8. Install elect
9. Install contr
10. Install leac
11. Install wire

For the maide
Check cg and
I use +/- 45 de
Elevons shoul
Launch nose l

Trim cg and co

And don't forg

OUTER LANI
NDING SKID

4.00

a guide to building the PbF.

foam pieces
all control surfaces
ate lower KF piece
nal: do your cool paint job now
fuselage
foam skid assemblies
up electrics, check operation, center servos
electrics
control rods and horns
ll leading edge tube
ll wire hoop landing gear

maiden flight:

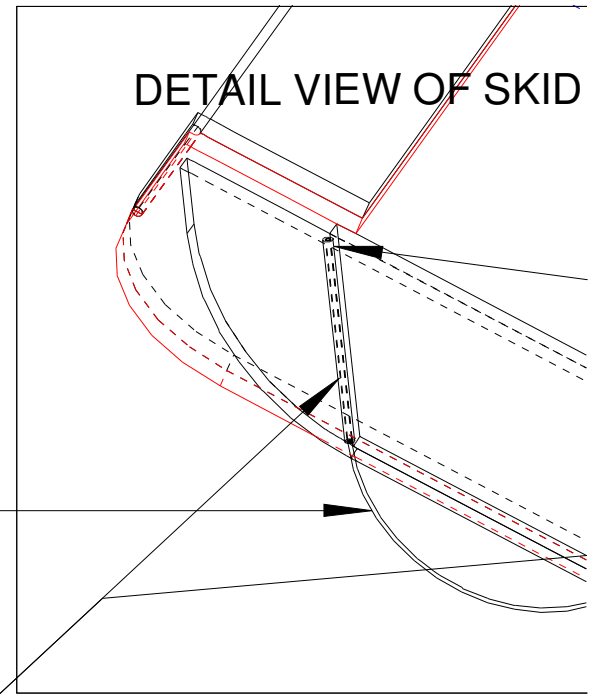
g and control movements
45 degrees and 75% expo on all surfaces to start
should be slightly up; 1/16" or 1/8", rudder straight
nose high, about 45 degrees and 1/3 throttle. It should float away and climb slowly.

and controls as required.

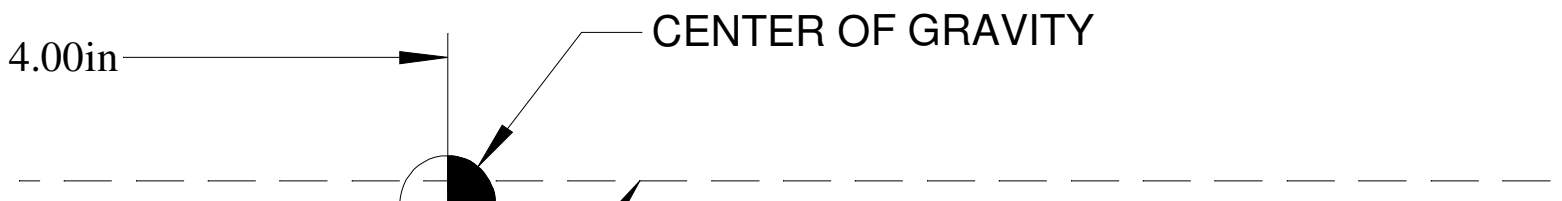
Don't forget the most important thing - Have fun!

LANDING GEAR IS .032" MUSIC WIRE 9-3/4"
FLEX BOTH ENDS OF WIRE AND INSERT IN
SPRING TENSION HOLDS WIRE IN PLACE

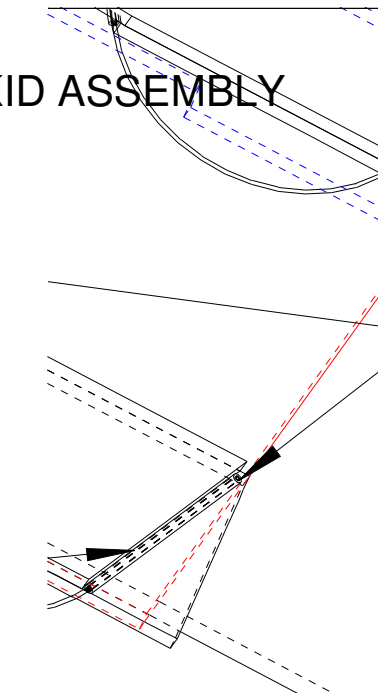
DETAIL VIEW OF SKID ASSEMBLY



PLASTIC TUBES GLUED TO INSIDE
OF SKID ASSEMBLIES. RC CARPENTER
GUIDE CAN BE USED FOR TUBE
ALSO 1/8" NYLON TUBING IS S



E 9-3/4" LONG - 2 PIECES REQ.
ERT INTO TUBES.
LACE.



NOTE: PLUGS REQUIRED
THERE IS A 1/4" LONG PLUG
IN THE END OF THE LANDING
GEAR TUBES TO ACT AS
WIRE STOPS. A PIECE OF
WIRE WAS USED FOR
THIS ON THE PROTOTYPE.

TO INSIDE CORNER
C CAR ANTENNA
R TUBING.
G IS SUITABLE