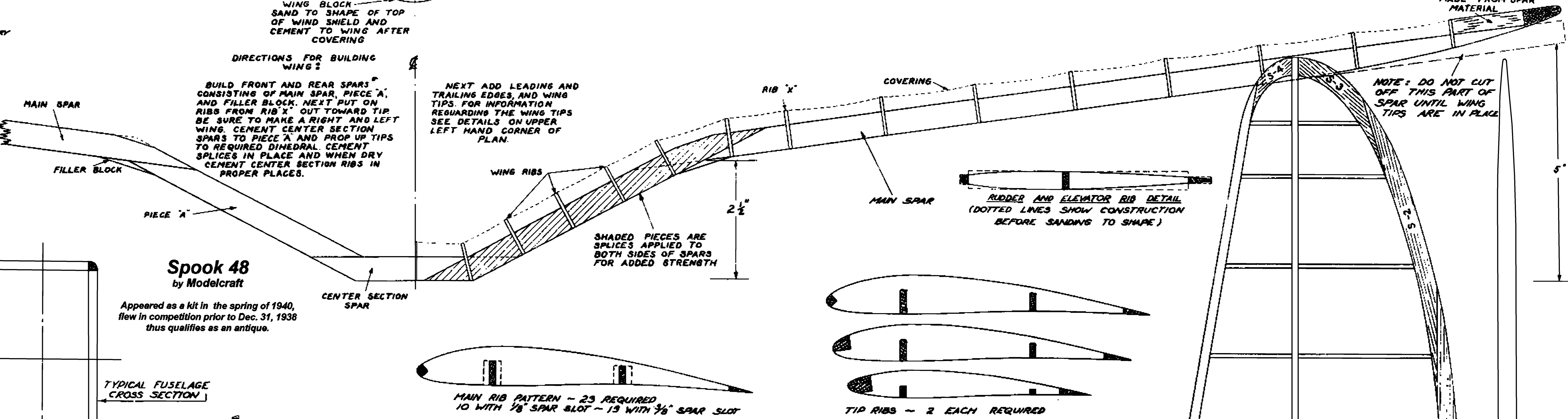
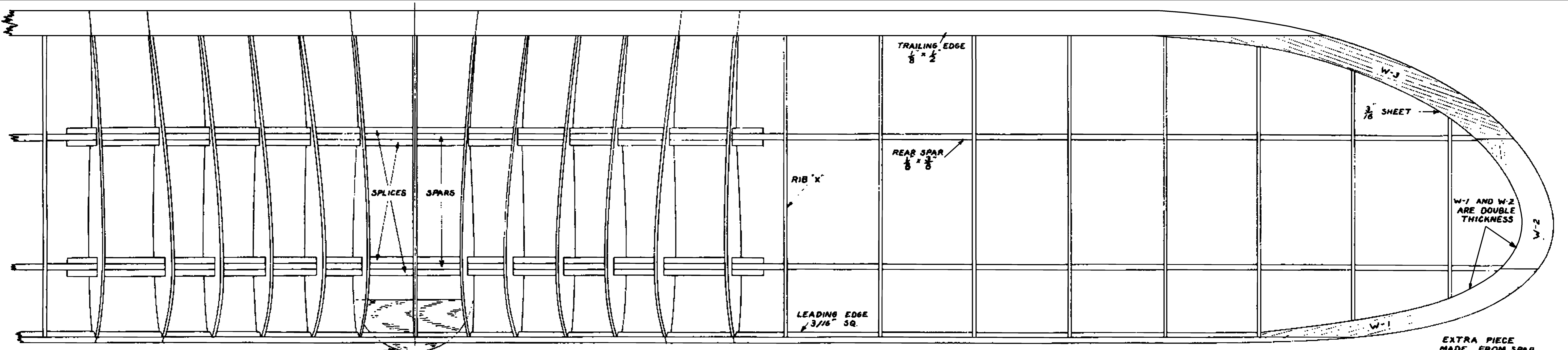


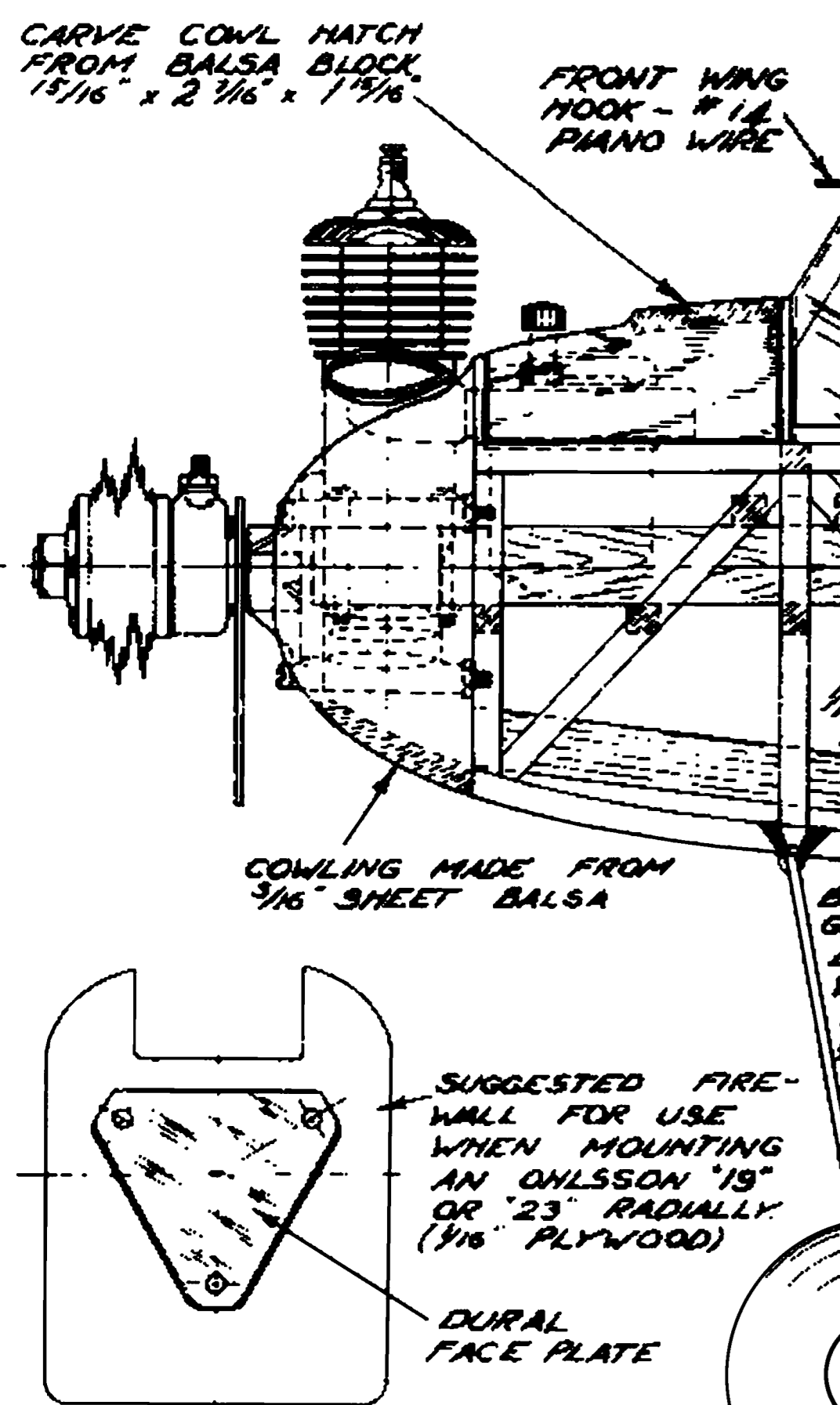
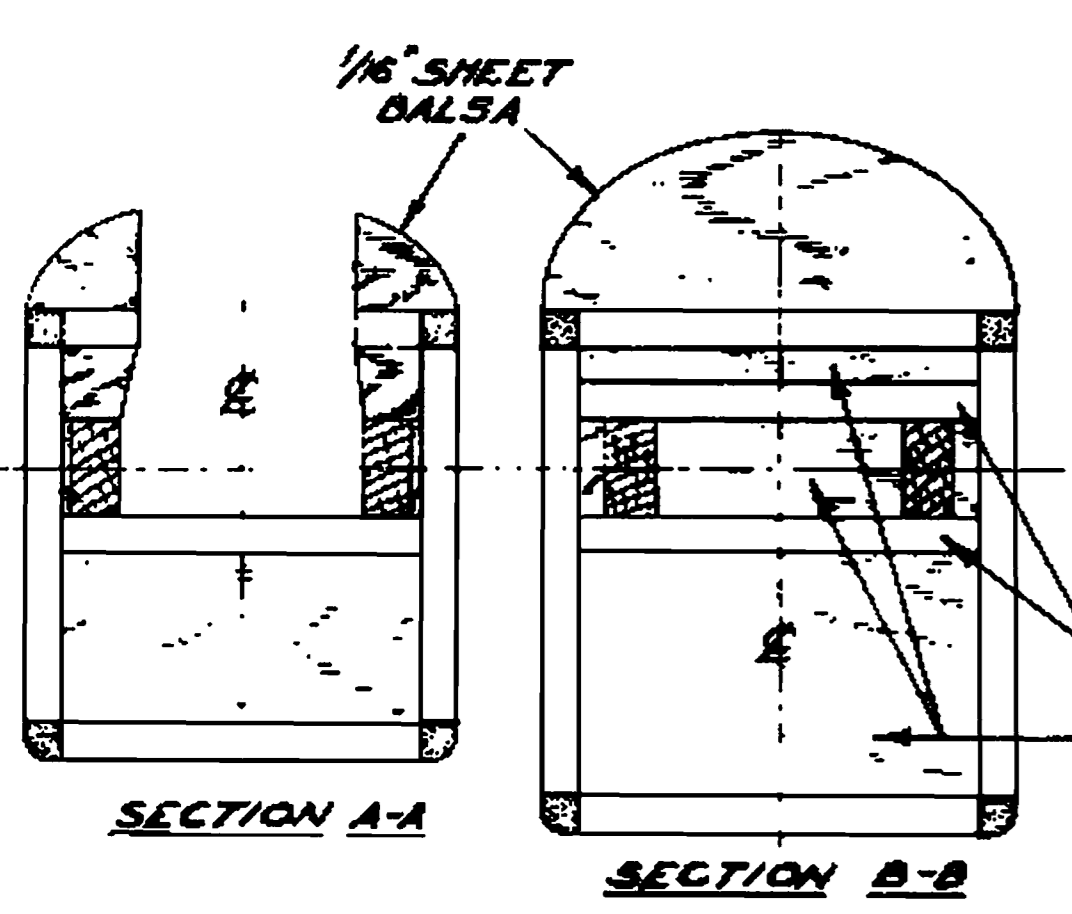
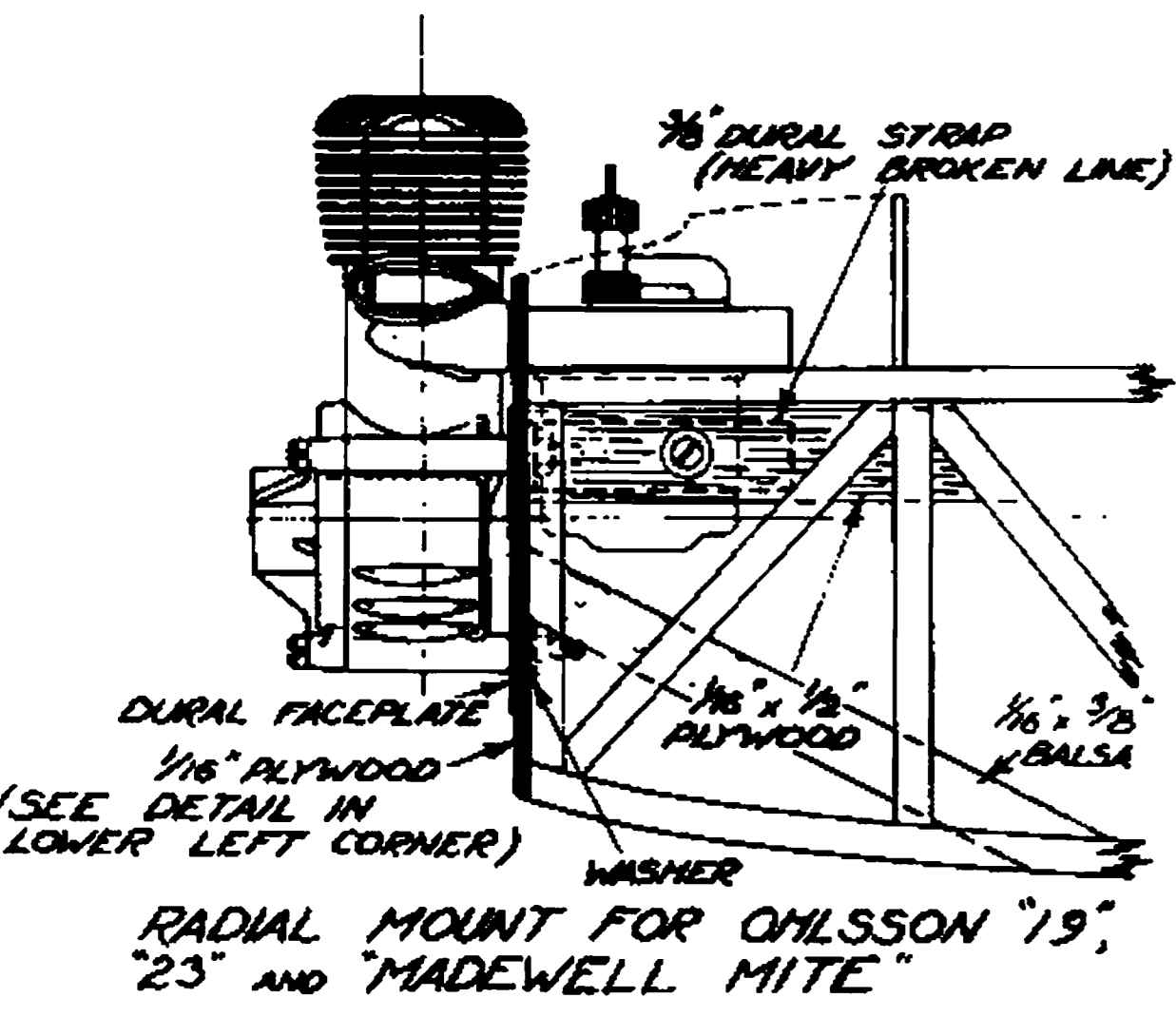
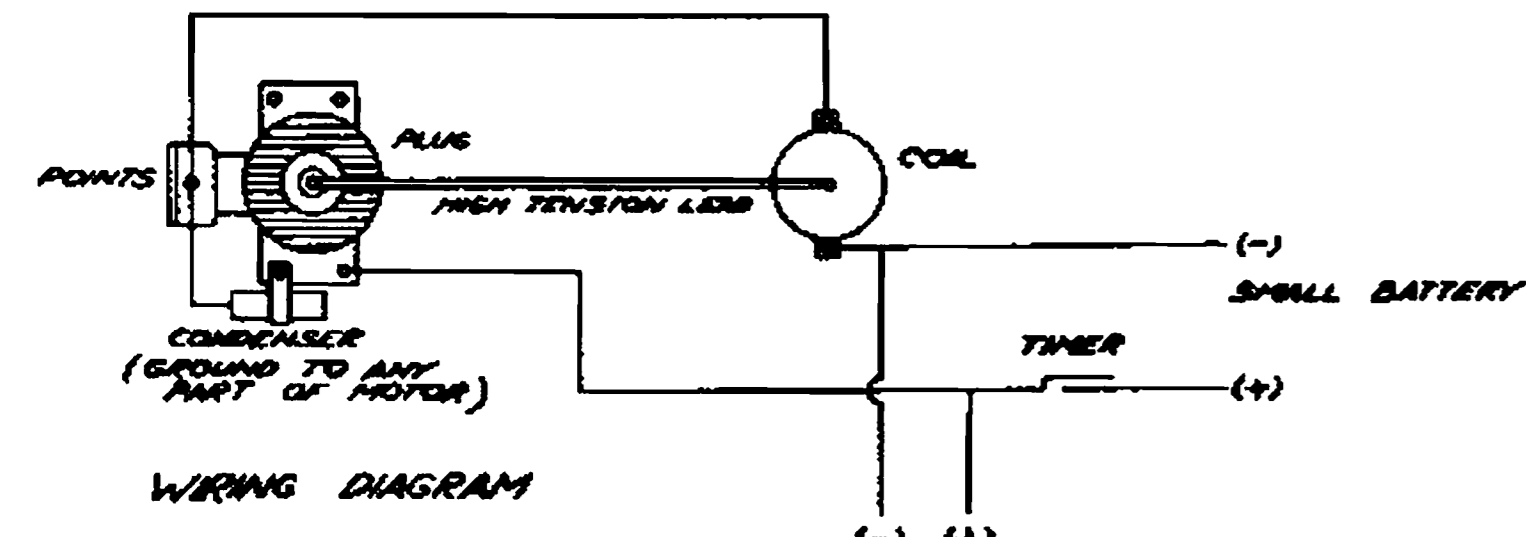
**WING TIP DETAILS:**

CUT TIPS FROM PRINTED SHEET AND CEMENT TO FOLLOW TOP CURVE OF RIBS. SEE WING TIP AND SPAR DETAIL SAND BOTTOM OF SPARS AND RIBS TO CONFORM WITH TIP. SEE SPAR AND TIP RIB DRAWINGS. THE MAIN DIFFERENCE OF THIS WING TIP IS THAT THE BOTTOM SURFACE CURVES UPWARD INSTEAD OF THE ORDINARY TYPE OF TIP MAY BE USED.

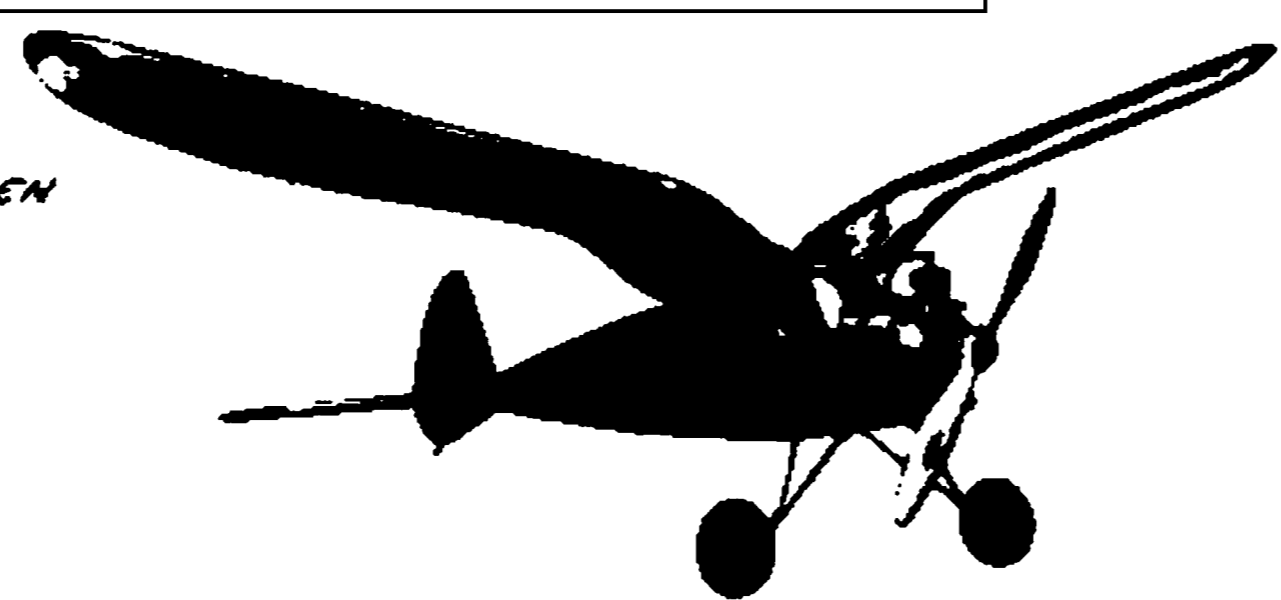


**Spook 48**  
by Modelcraft

Appeared as a kit in the spring of 1940, flew in competition prior to Dec. 31, 1938 thus qualifies as an antique.



THIS KIT MANUFACTURED BY  
**MODEL-CRAFT**  
1306 S. VERMONT AVENUE  
LOS ANGELES, CALIFORNIA



**TEST FLYING:**  
ADJUST BATTERY SO SHIP WILL BALANCE AT POINT SHOWN ON SIDE VIEW. TAKE SHIP TO A SMOOTH FIELD AND USE JUST ENOUGH ENGINE POWER TO MAKE IT TAXI. RUN IT ACROSS GROUND, ADJUSTING RUDDER UNTIL IT RUNS IN A STRAIGHT LINE. PUT A PIECE OF WOOD ABOUT 1/8" THICK UNDER TRAILING EDGE TO KEEP SHIP FROM FLYING. WHEN SHIP RUNS IN STRAIGHT LINE TAKE WOOD OFF FROM T.E. AND GIVE ENGINE A LITTLE MORE POWER, JUST ENOUGH TO TAKE OFF. SET TIMER FOR NOT LESS THAN 10 AND NOT MORE THAN 20 SECONDS. ADJUST RUDDER FOR DESIRED CIRCLE, INCREASING POWER A LITTLE AT A TIME. IF SHIP HAS A TENDENCY TO STALL AS POWER IS INCREASED, TILT MOTOR DOWN. INCREASE DOWN THRUST UNTIL SHIP CAN BE FLOWN WITH FULL POWER. SHIP SHOULD CIRCLE TO LEFT UNDER POWER, BUT DO NOT INSIST ON THIS AS IT WOULD BE NECESSARY TO REBUILD SOME SHIPS TO KEEP THEM FROM FLYING TO THE RIGHT. KEEP THE CIRCLE WIDE ENOUGH SO THAT THE SHIP DOES NOT SPIN IN. THE IDEAL CIRCLE IS ONE THAT IS TIGHT ENOUGH FOR THE SPEED OF THE PLANE TO PUT IT INTO A GLIDE WITHOUT A STALL AND ONE TOO TIGHT A LEFT CIRCLE IS CORRECTED BY TURNING ENGINE TO RIGHT. IMPORTANT: MAKE ONLY ONE ADJUSTMENT BETWEEN FLIGHTS.

THE **SPOOK 48**  
WINGSPAN - 48 INCHES FLYING WEIGHT - 18 OZ.  
POWER WITH ANY CLASS 'A' OR 'B' ENGINE.  
ORIGINAL DESIGN BY - BARNEY SNYDER AND JOHN MUIR  
DRAWN AND TRACED BY - JOHN MUIR  
CHECKED BY - BARNEY SNYDER AND STUART JONES