

CONTROL LEADS 1/32" WIRE

BELL CRANK .064 ALUMINUM

CONTROL HORN
.030 BRASS

- FULL SIZE PARTS -

HARDWOOD MOTOR MOUNTS 3/8x1/2x6"

MAECO TANK

1/16" WIRE CONTROL ROD

GUIDES

90° BEND

10" DIAMETER, 6" PITCH PROP

FORSTER "29" WITH GLOW PLUG

TANK VENT

1/16" SHEET COVERING TOP AND
BOTTOM OF CRUTCH

C.G.

1/8" PLYWOOD BELL CRANK
MOUNTING

2-1/2" DIA.
WHEELS

LANDING GEAR
3/32" STEEL WIRE

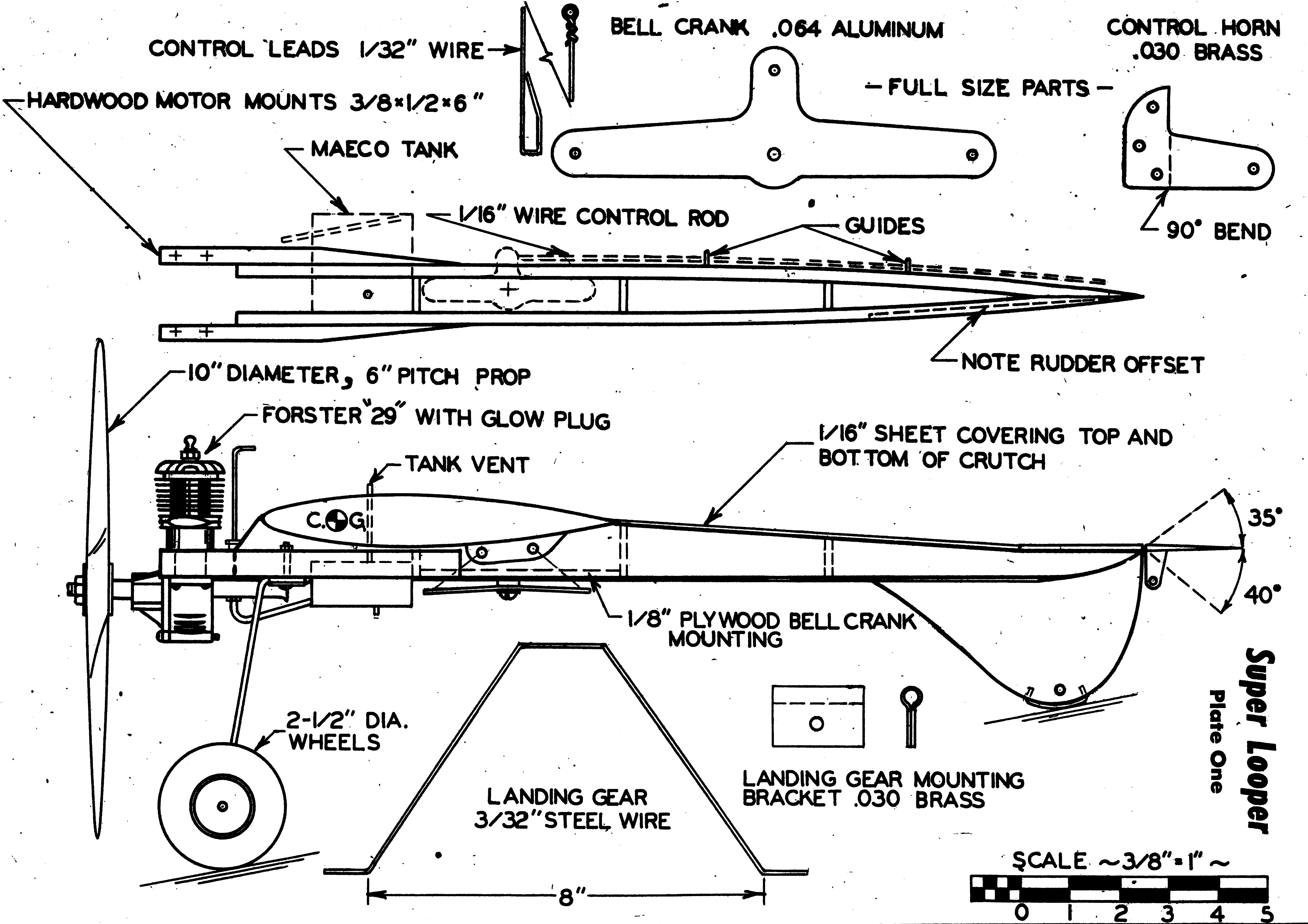
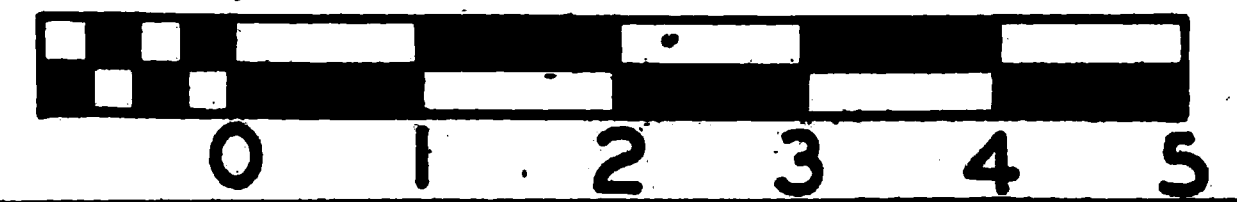
LANDING GEAR MOUNTING
BRACKET .030 BRASS

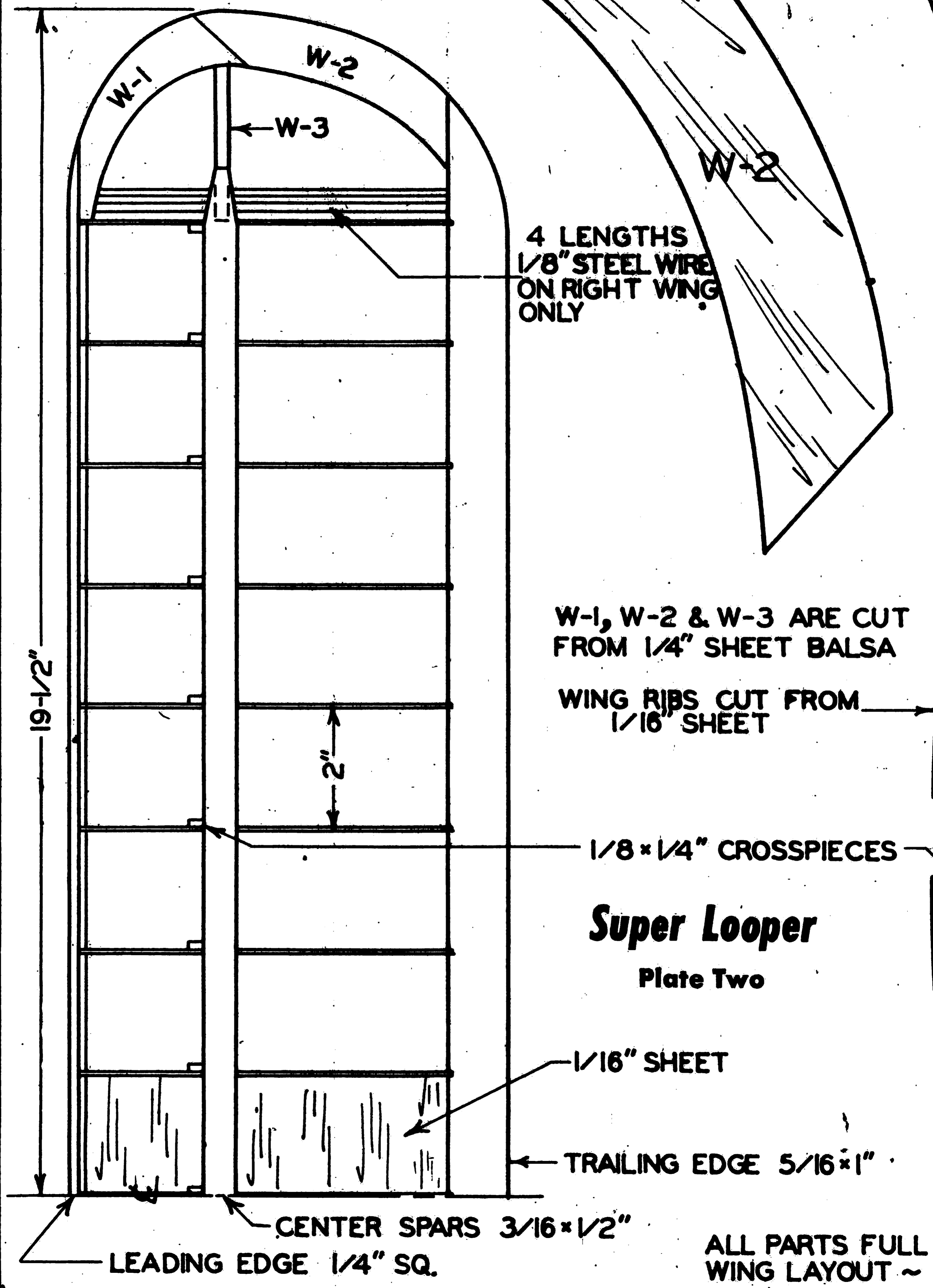
NOTE RUDDER OFFSET

35°
40°

Super Looper
Plate One

SCALE ~ 3/8" = 1" ~





W-1

W-2

W-3

W-2

4 LENGTHS
1/8" STEEL WIRE
ON RIGHT WING
ONLY

W-1, W-2 & W-3 ARE CUT
FROM 1/4" SHEET BALSA

WING RIBS CUT FROM
1/16" SHEET

19-1/2"

2"

1/8 x 1/4" CROSSPIECES

Super Looper

Plate Two

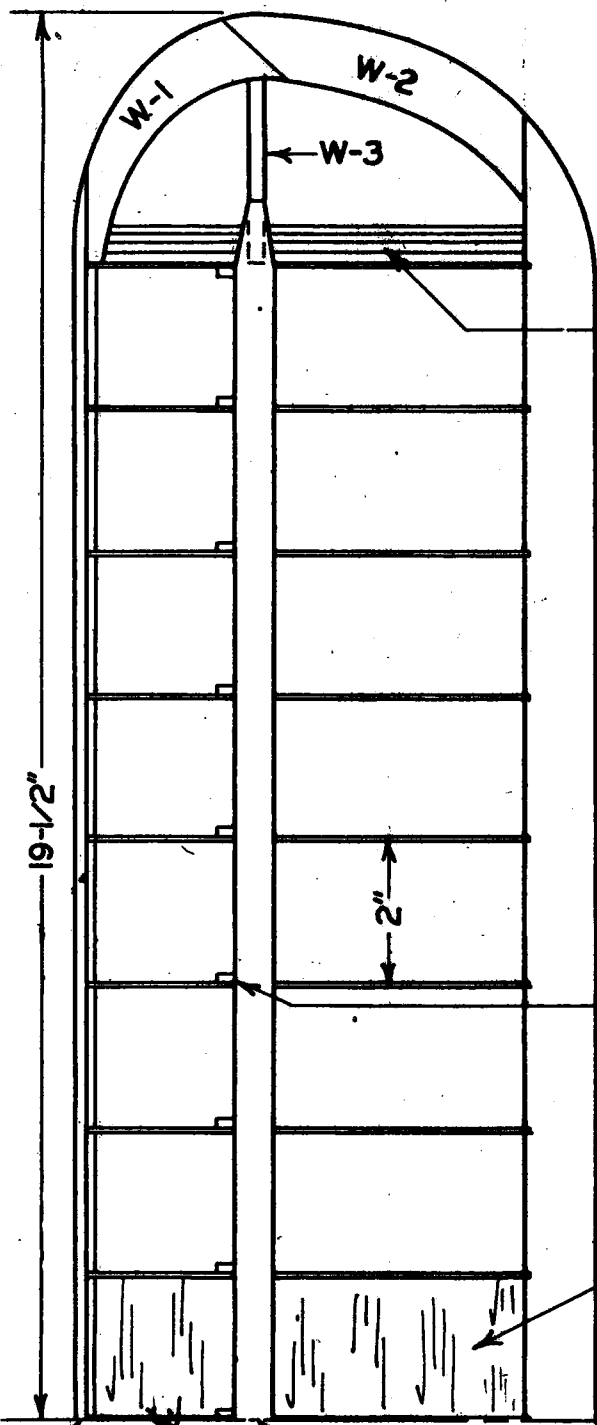
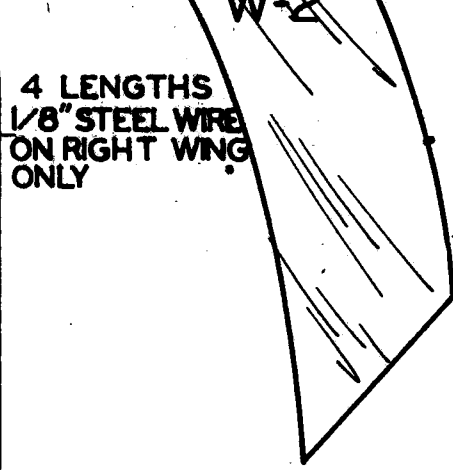
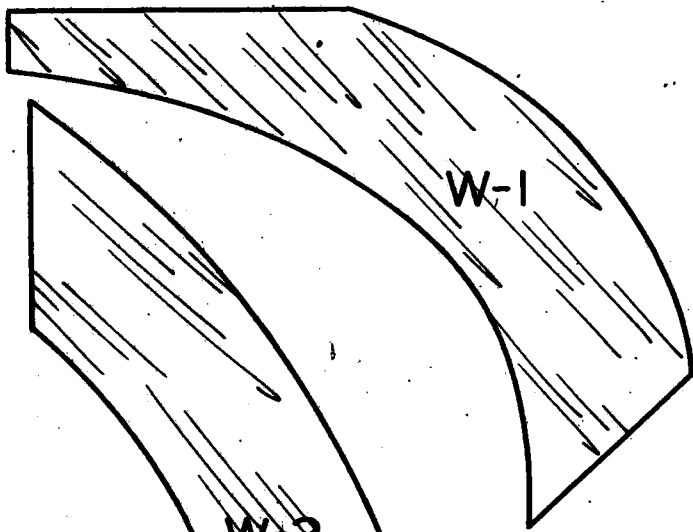
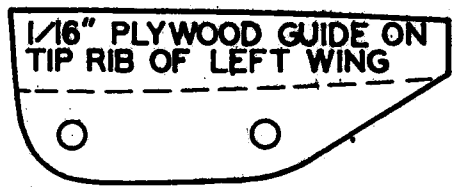
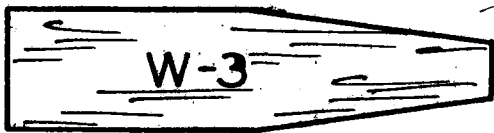
1/16" SHEET

TRAILING EDGE 5/16 x 1"

CENTER SPARS 3/16 x 1/2"

LEADING EDGE 1/4" SQ.

ALL PARTS FULL
WING LAYOUT ~



4 LENGTHS
1/8" STEEL WIRE
ON RIGHT WING
ONLY

W-1, W-2 & W-3 ARE CUT
FROM 1/4" SHEET Balsa

WING RIBS CUT FROM
1/16" SHEET

1/8 x 1/4" CROSSPIECES

Super Looper

Plate Two

1/16" SHEET

TRAILING EDGE 5/16 x 1"

CENTER SPARS 3/16 x 1/2"

LEADING EDGE 1/4" SQ.

ALL PARTS FULL SIZE EXCEPT
WING LAYOUT ~ 3/8" = 1" ~

