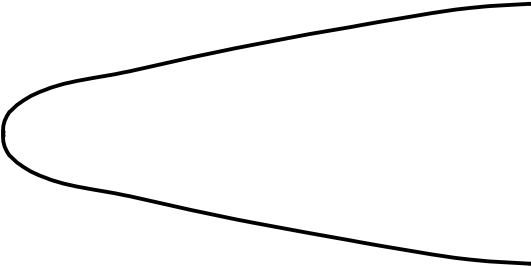
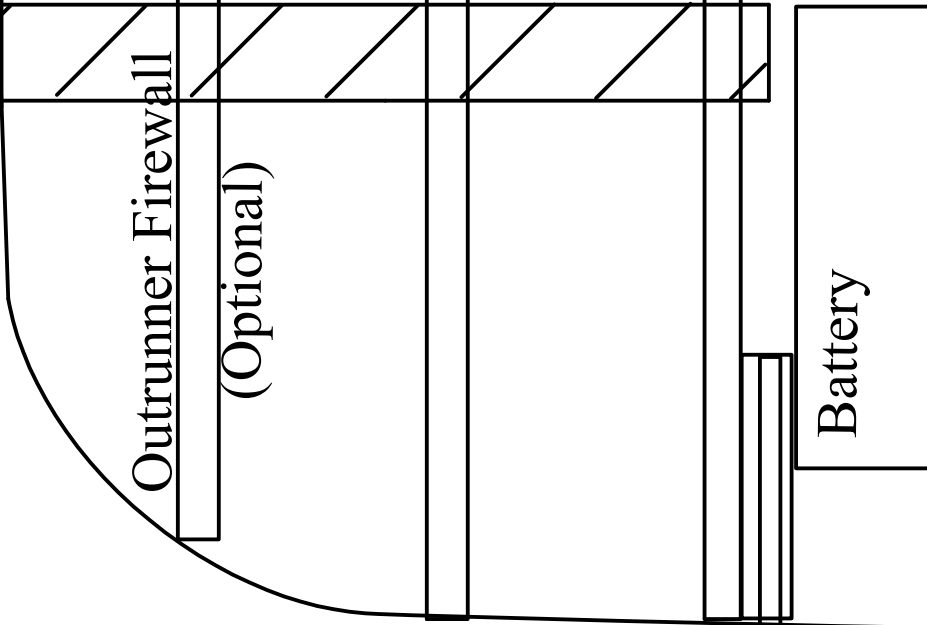
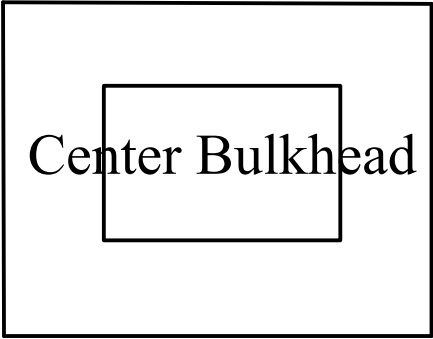
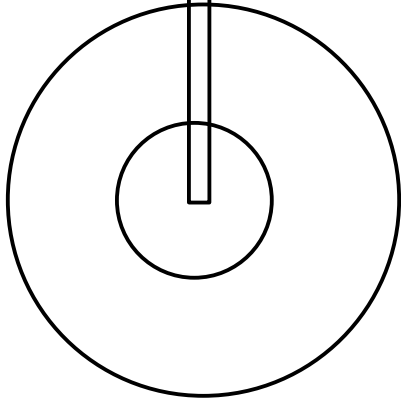


3/8 X 3/8 X 4 inch Basswood

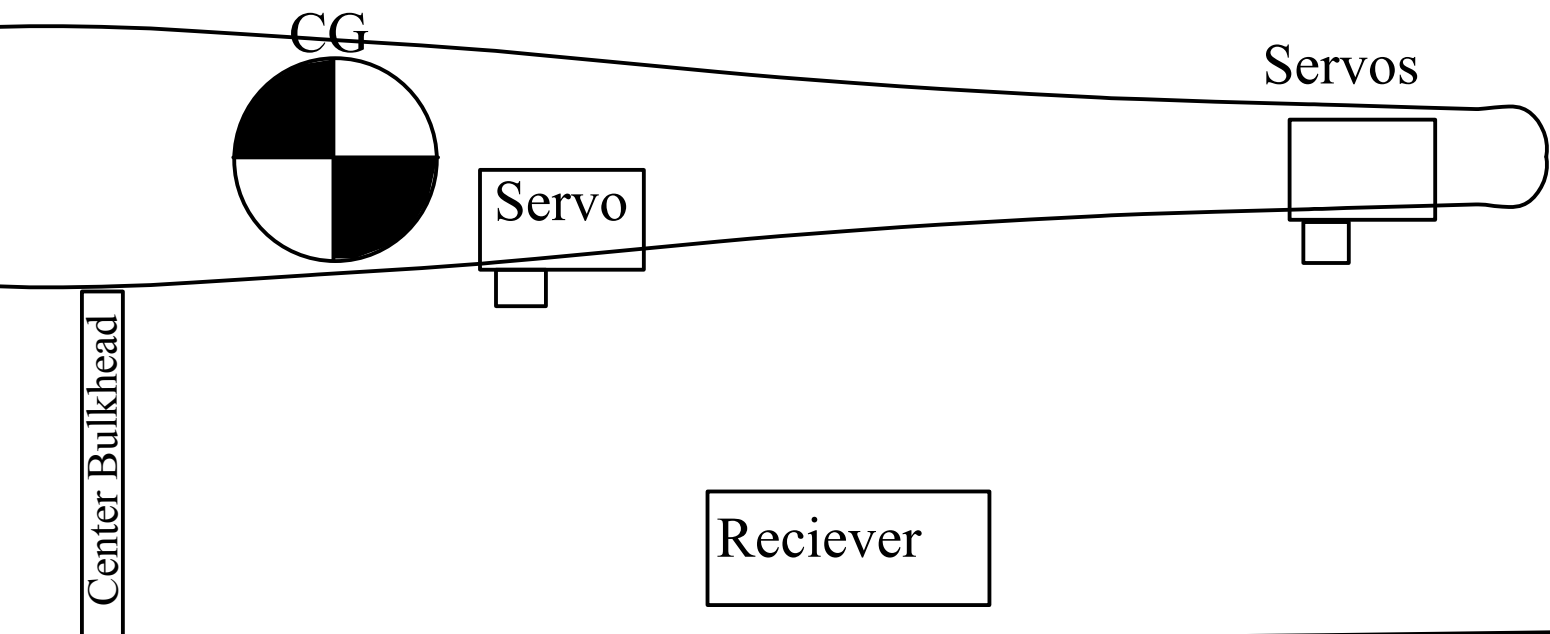


ESC



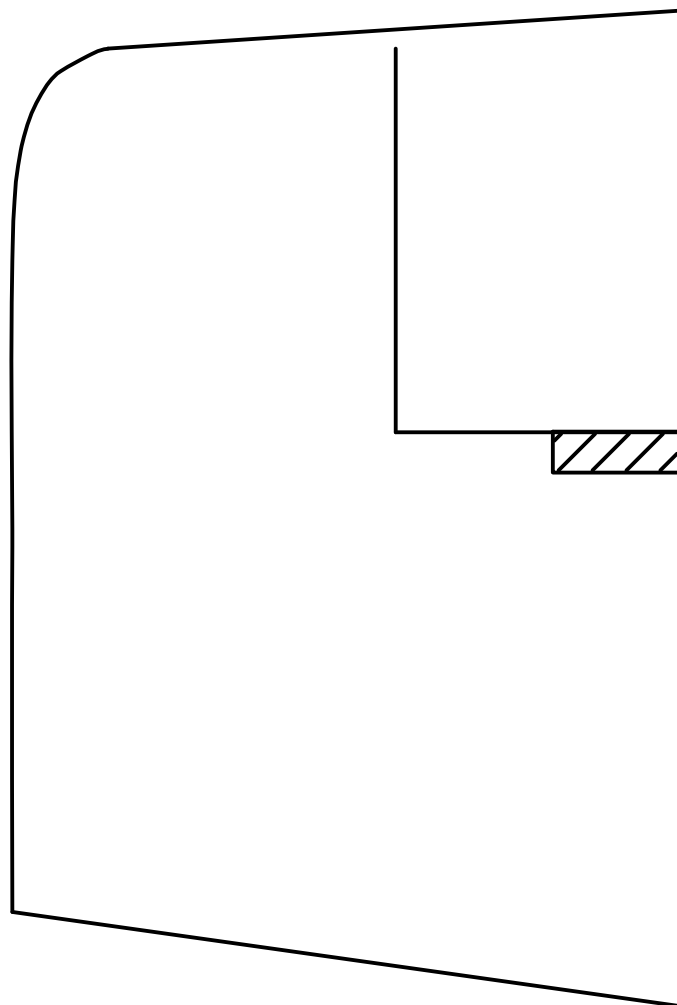
The

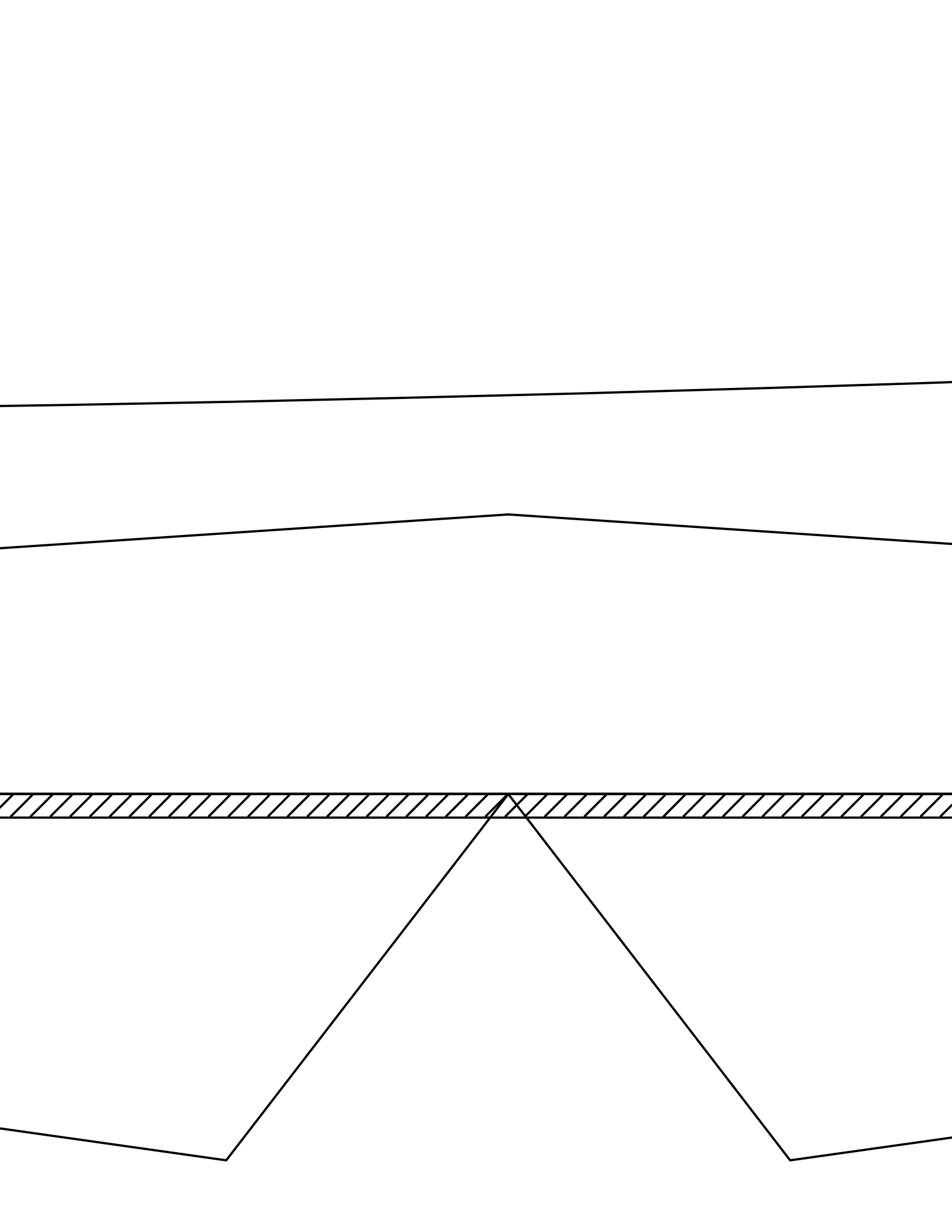
Wingsp
Length-
Weight-
Motor-
Prop-
Battery-



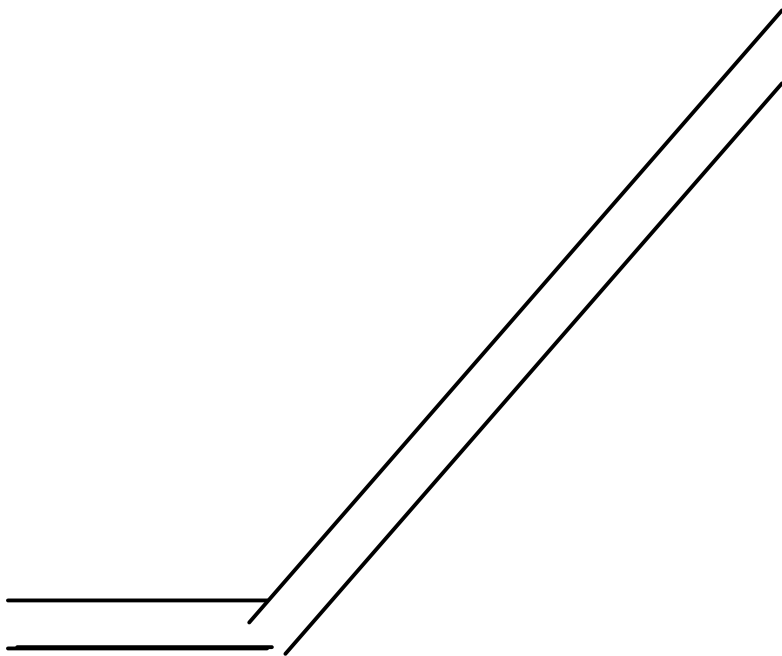
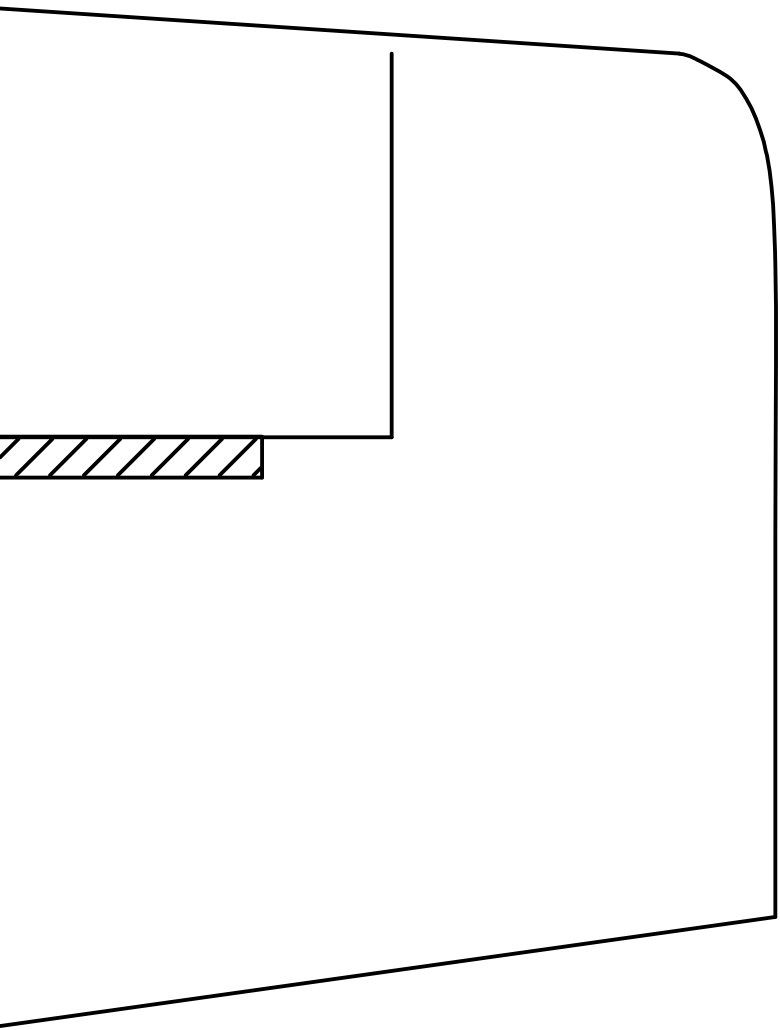
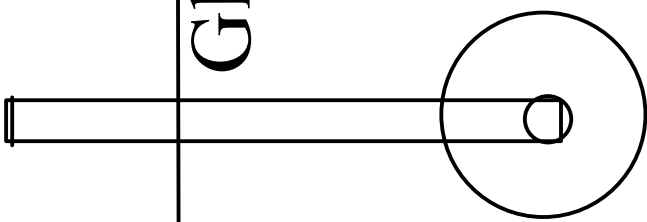
"Big Nasty"

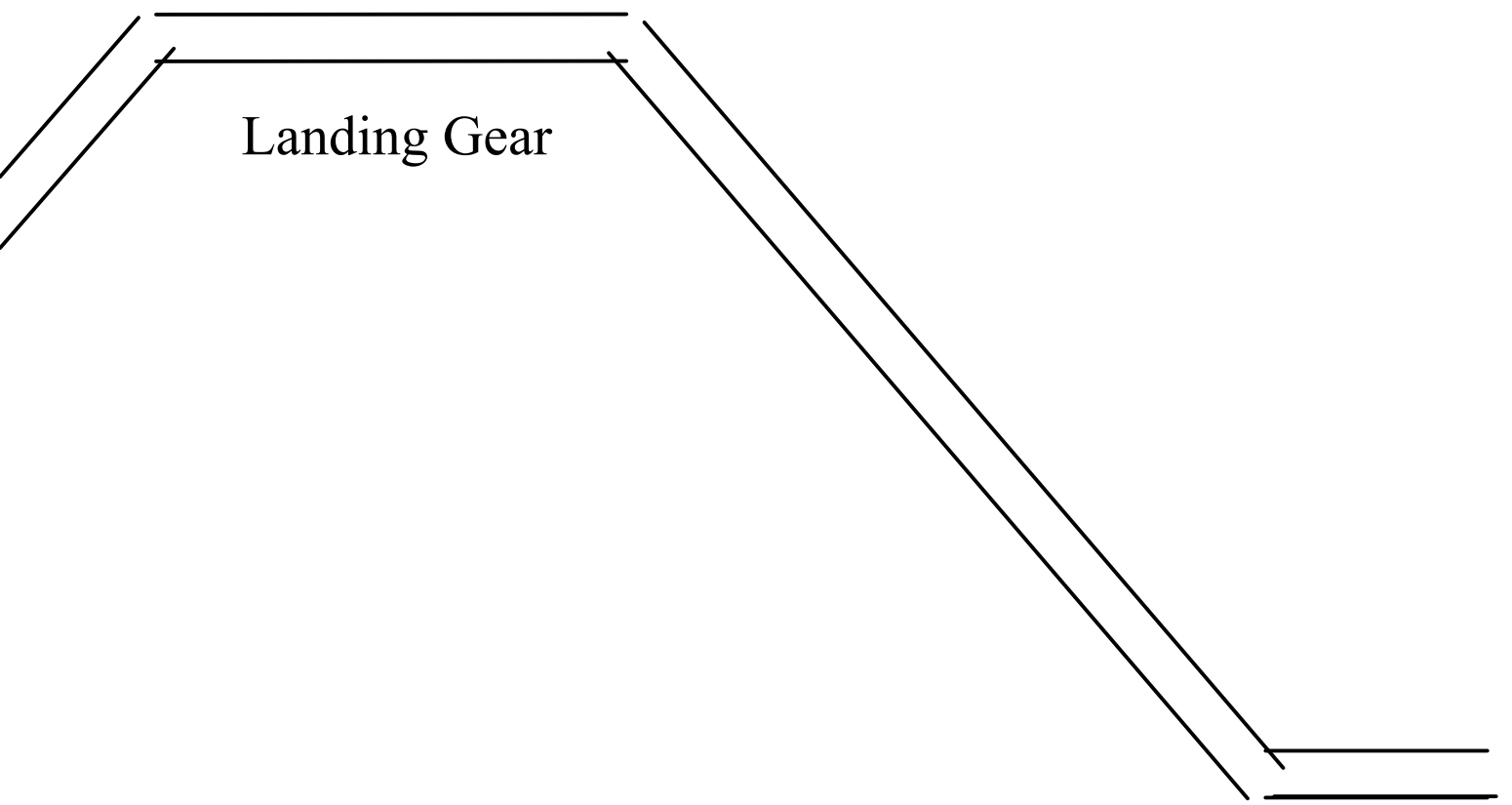
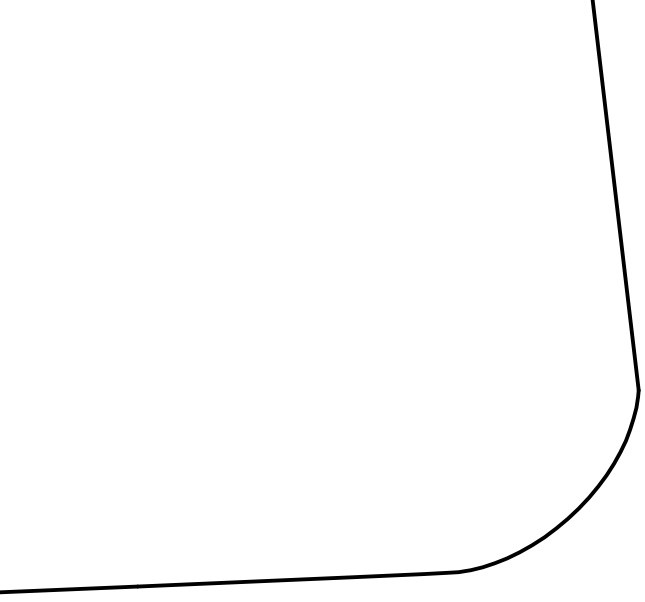
- an- 38 in.
- 36.5in
- w/o batt. 16.50 oz.
- GWS350D/Razor 400
- 11-12 inch
- 3 cell-850-1500 ma.



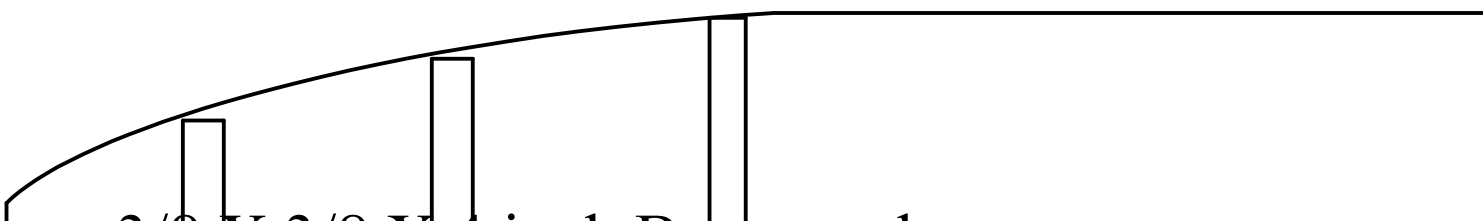
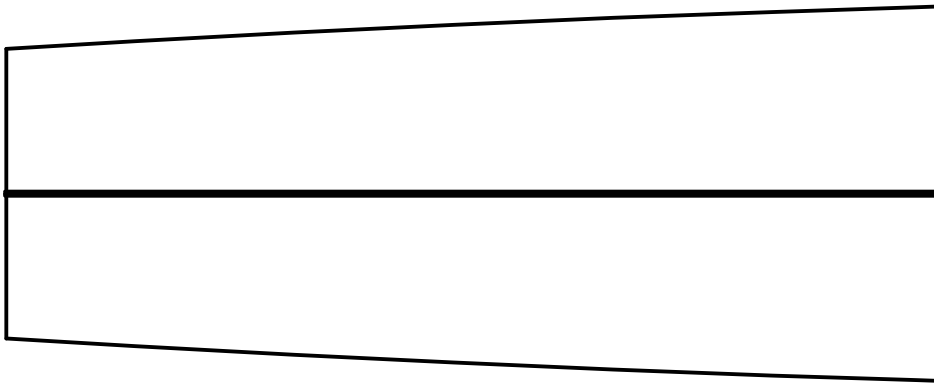
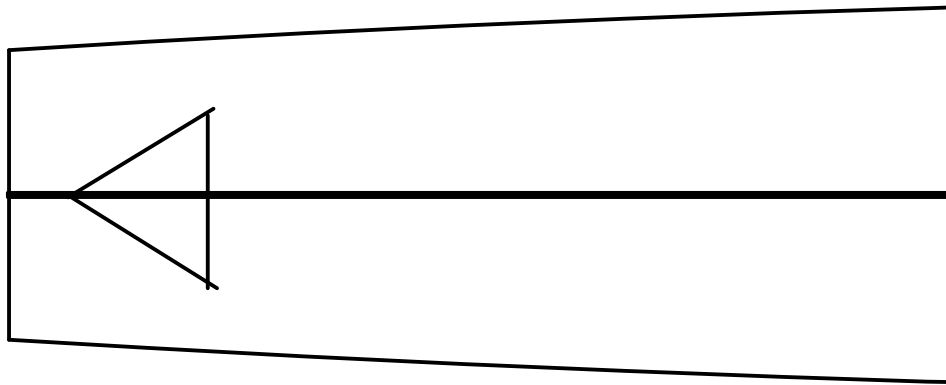


Glue I

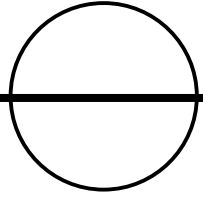
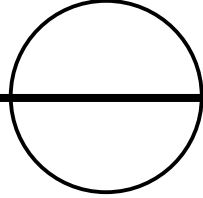
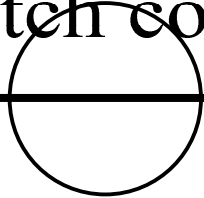
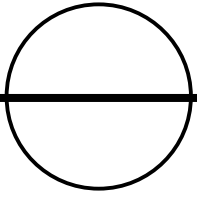


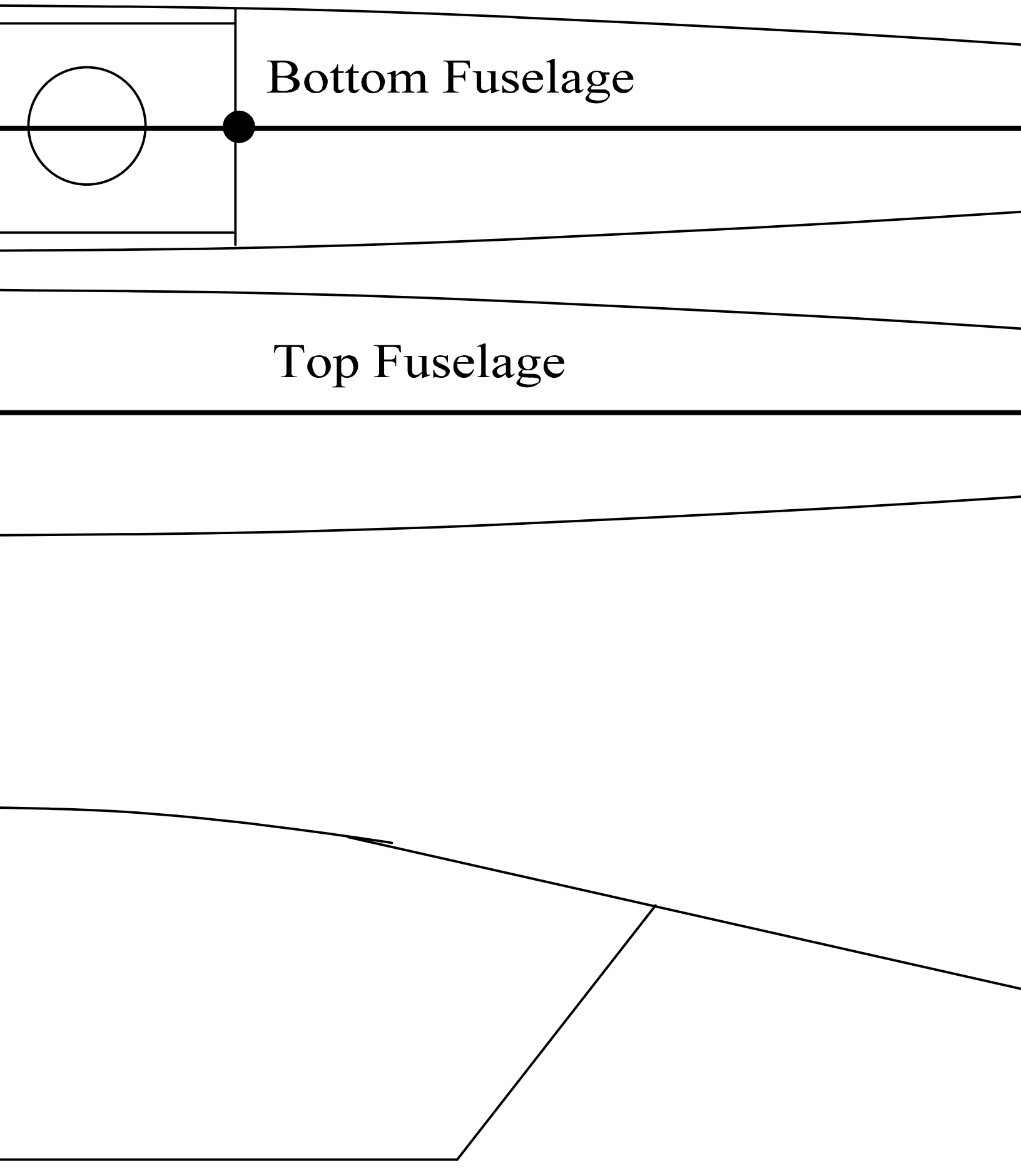


Landing Gear



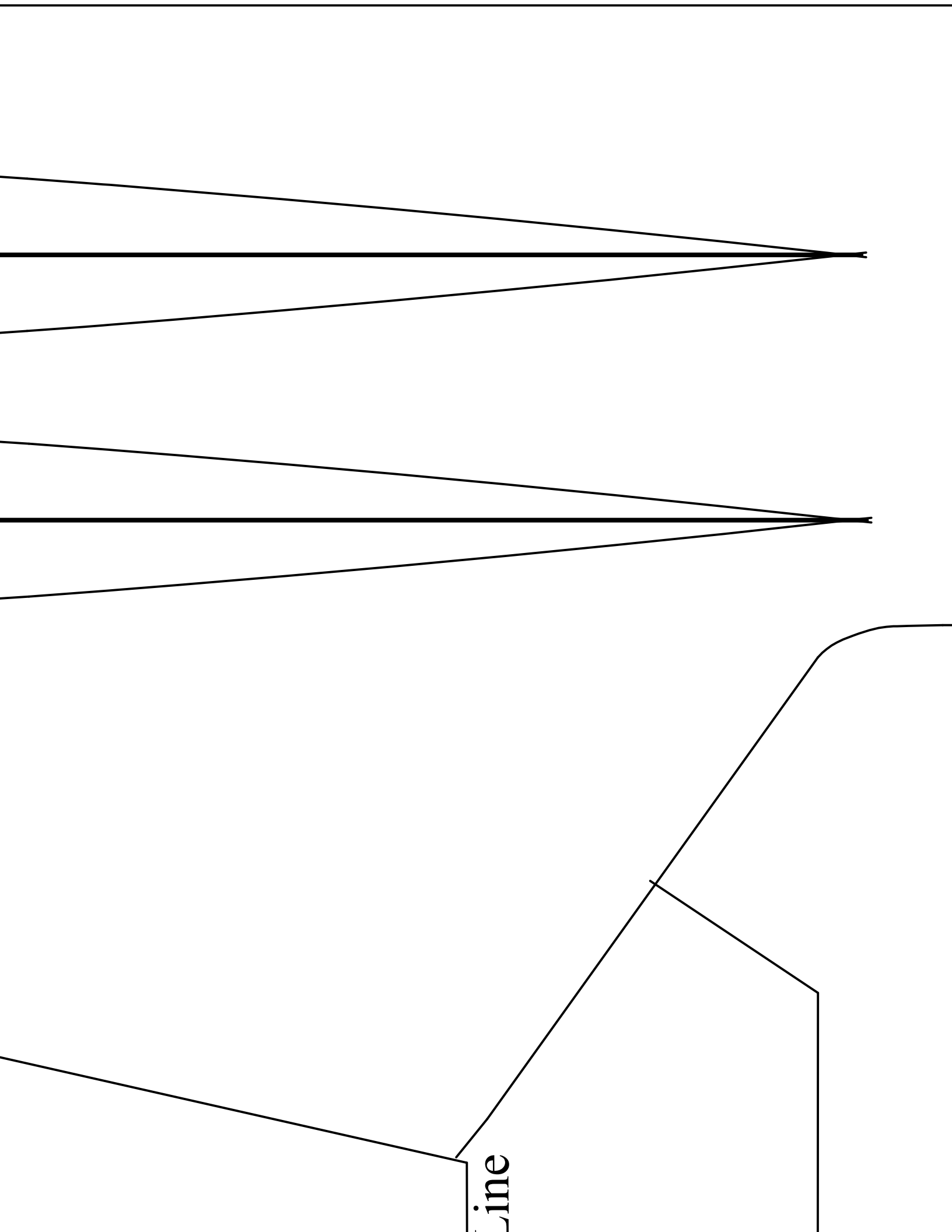
Hatch cover



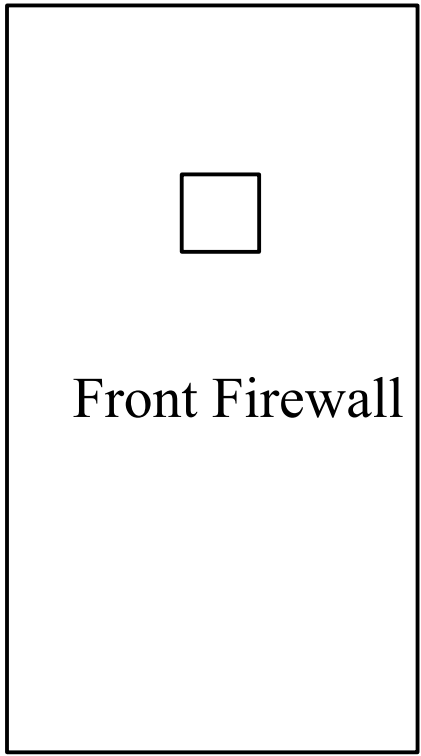
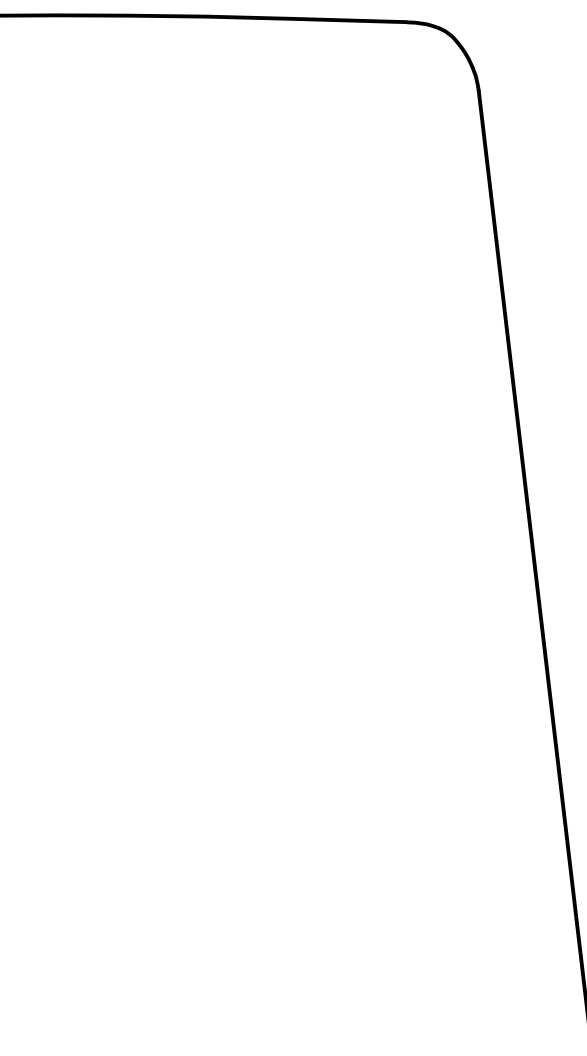


Bottom Fuselage

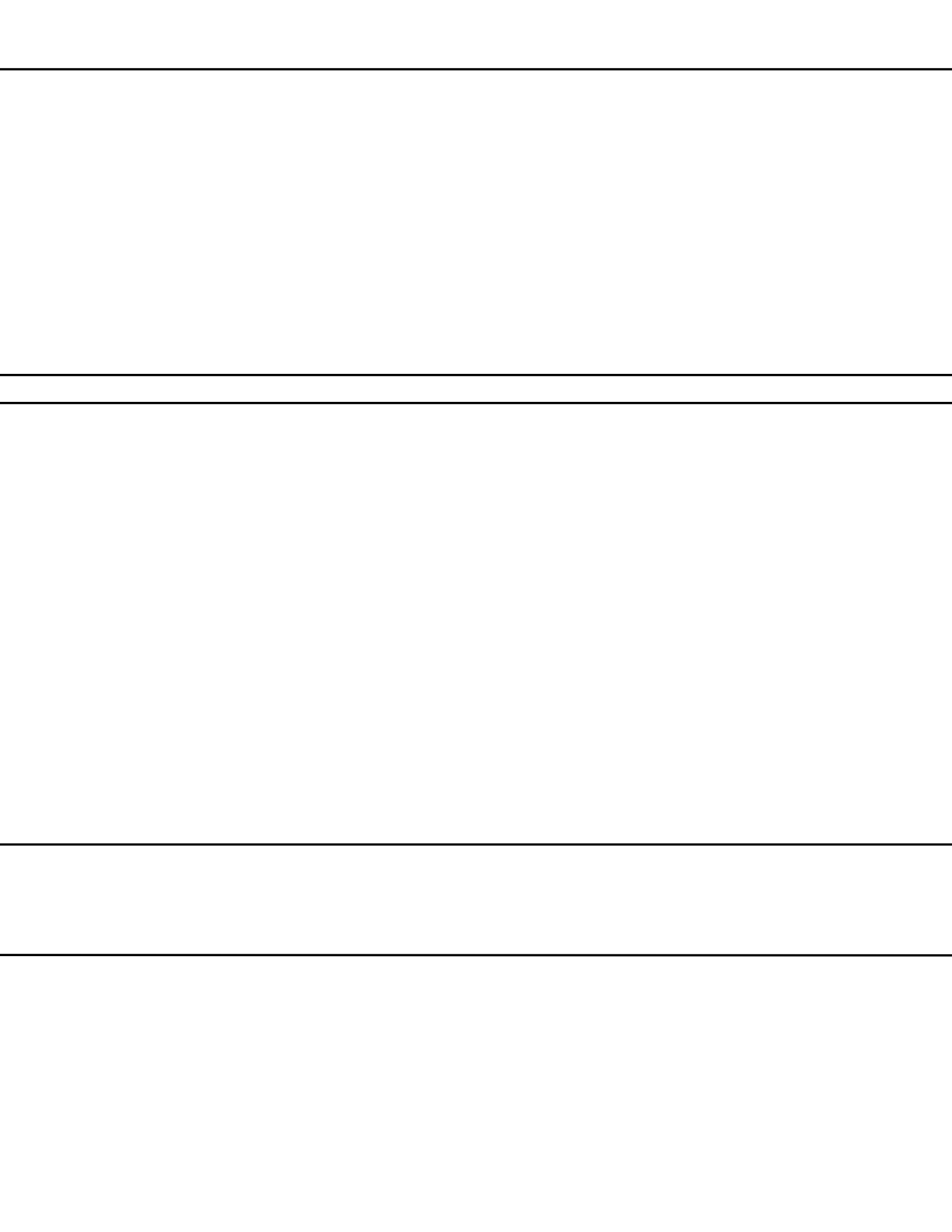
Top Fuselage



Line

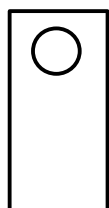
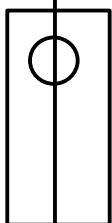


Glue Line

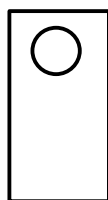


Carbon Fiber Spar

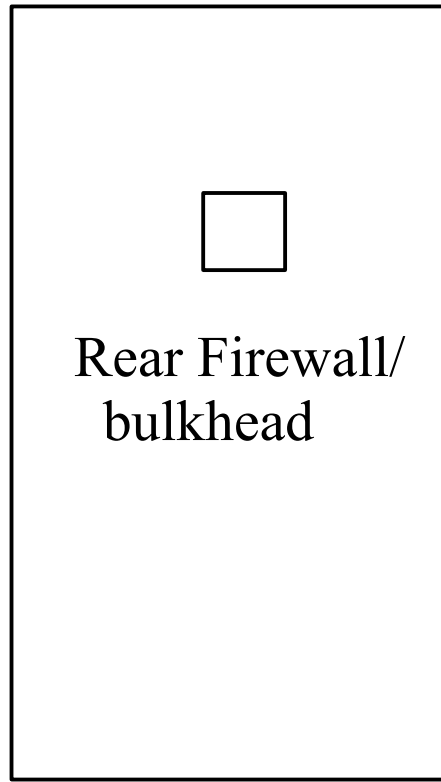
3 Ch. Aileron Servo



Servos



Glue Line



Rear Firewall/
bulkhead

