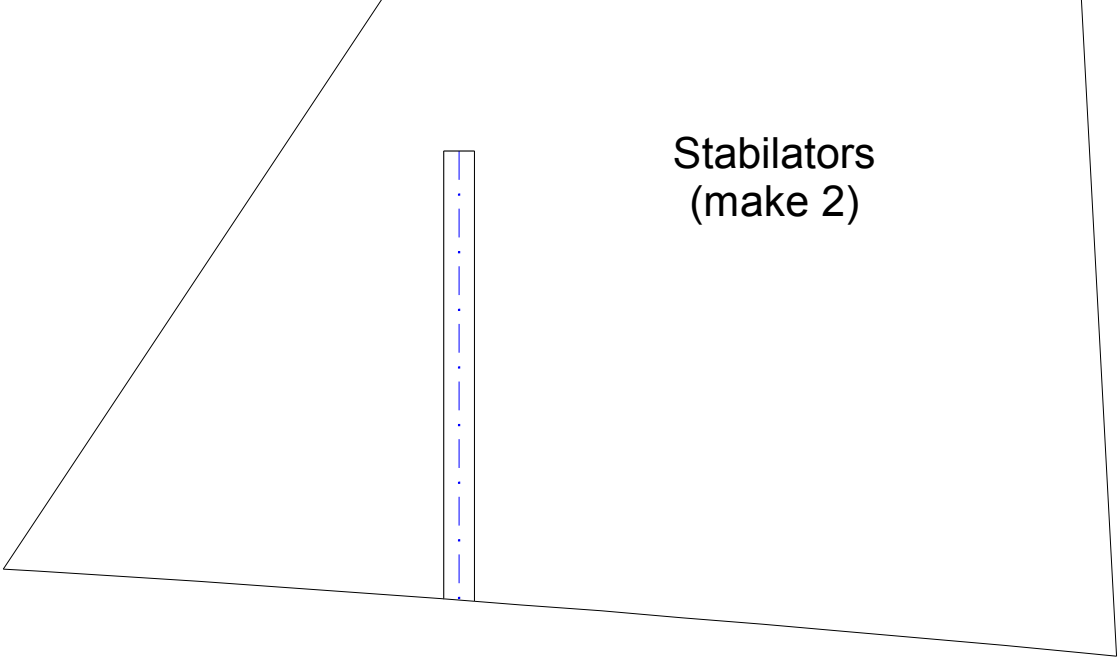


**Bulkhead F-1**  
**(make 1)**

**Bulkhead F-3**  
**(make 1)**

**Bulkhead F-4**  
**(make 1)**

**Deck Top**  
**(make 1)**



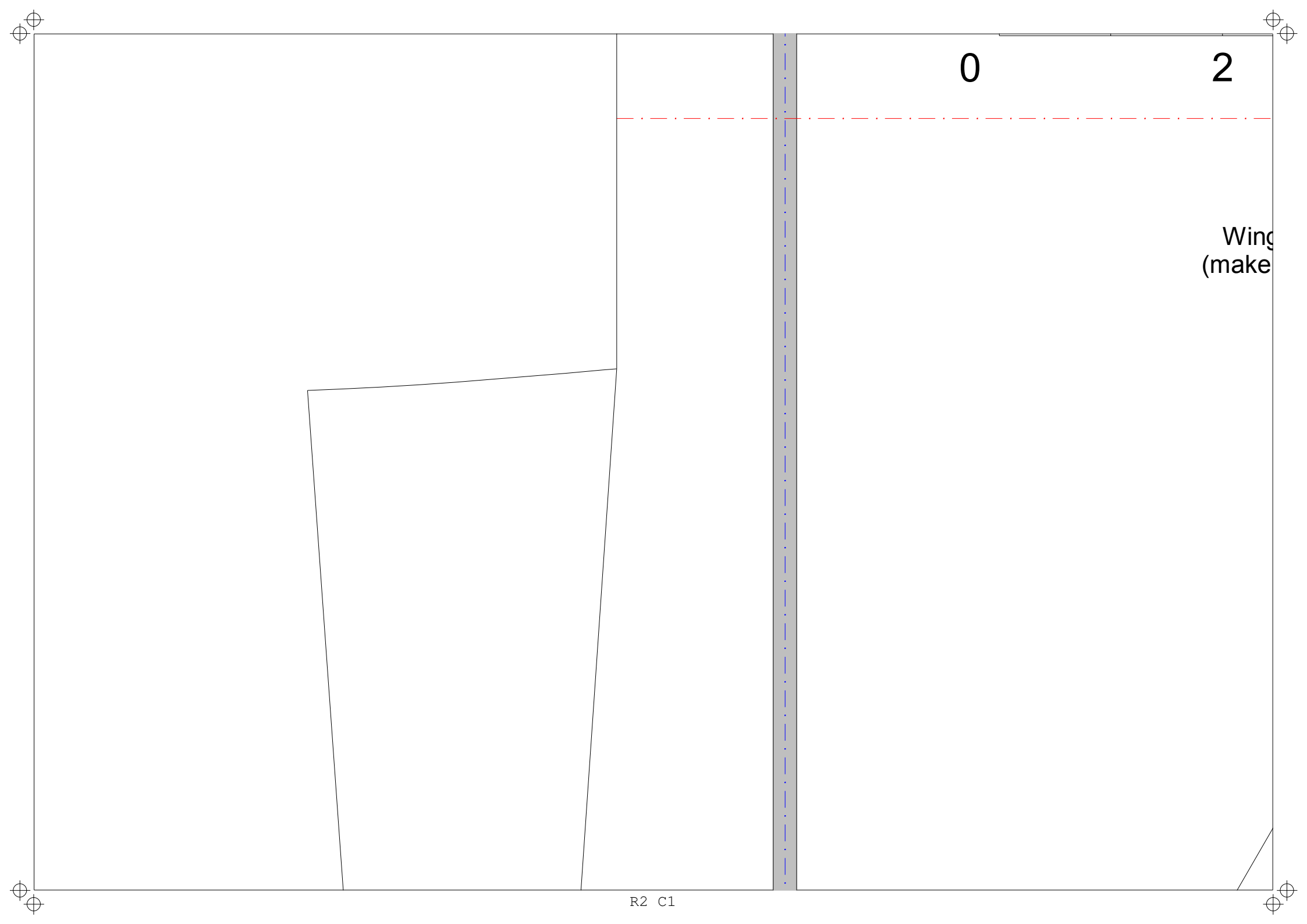
Stabilators  
(make 2)

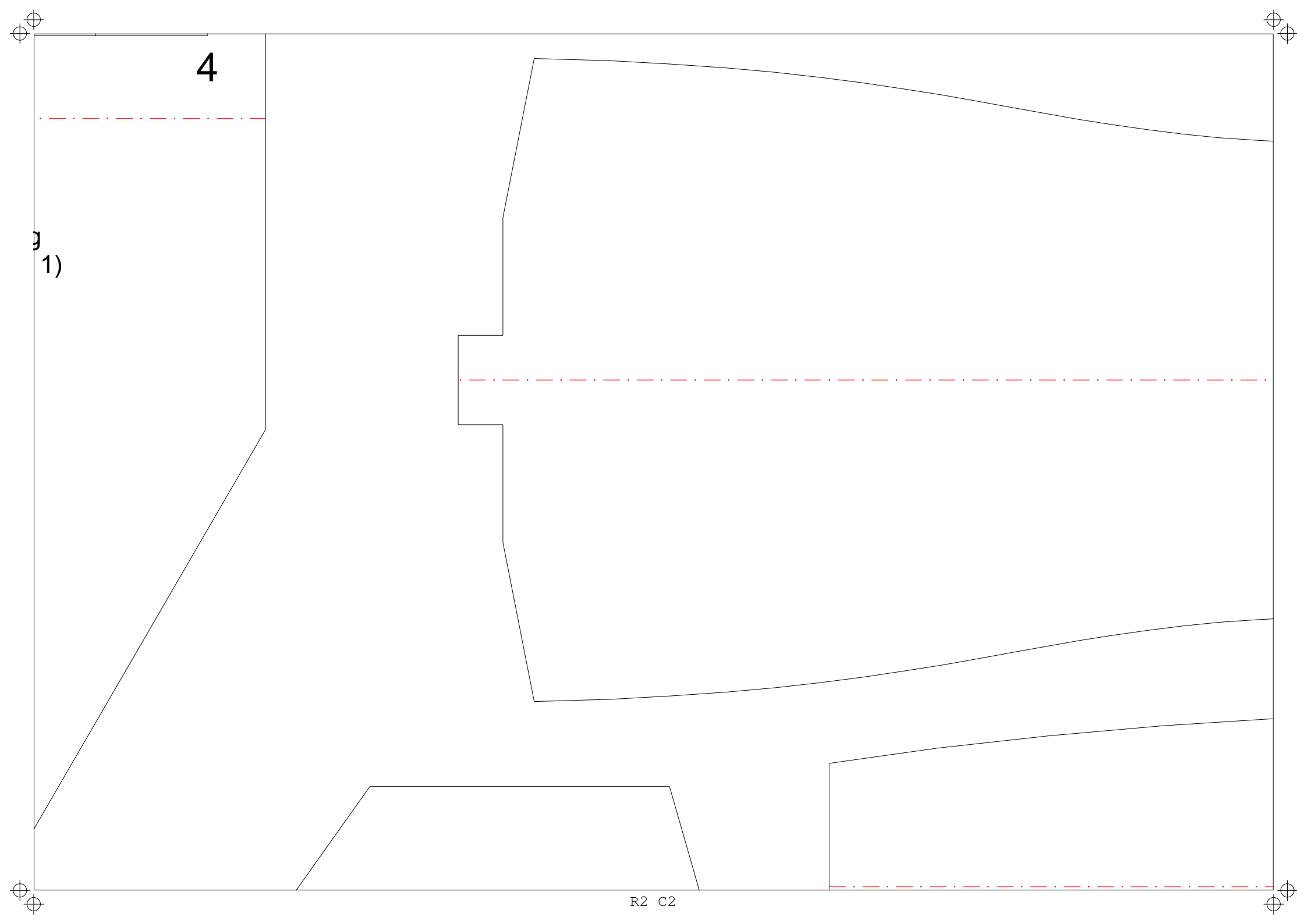
# ***T-38 Talon Park Jet***

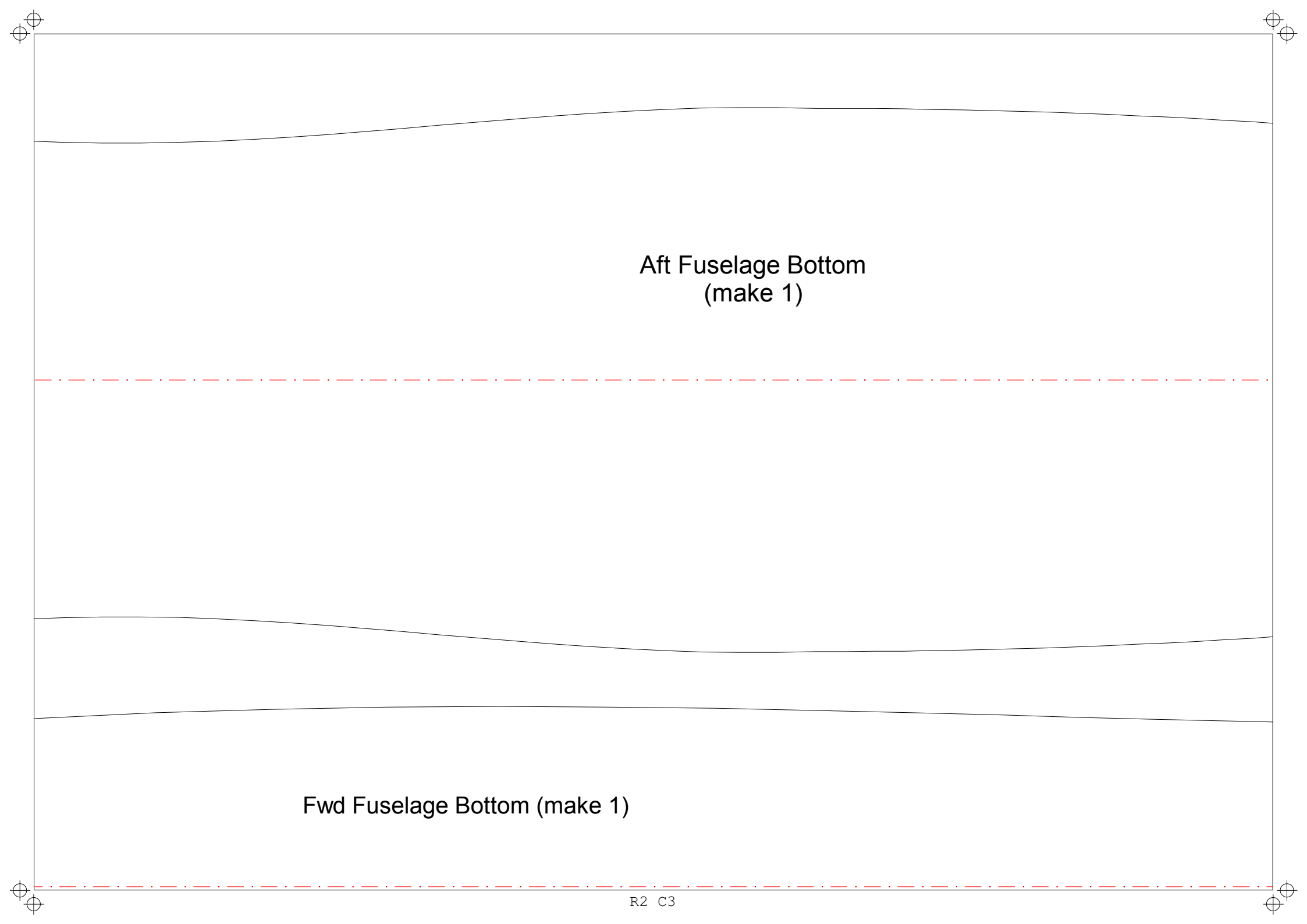
***Designed by Steve Shumate***

***Copyright © 2005 All Rights Reserved***

All parts made from 6 mm Depron or  
BlueCore foam unless otherwise specified



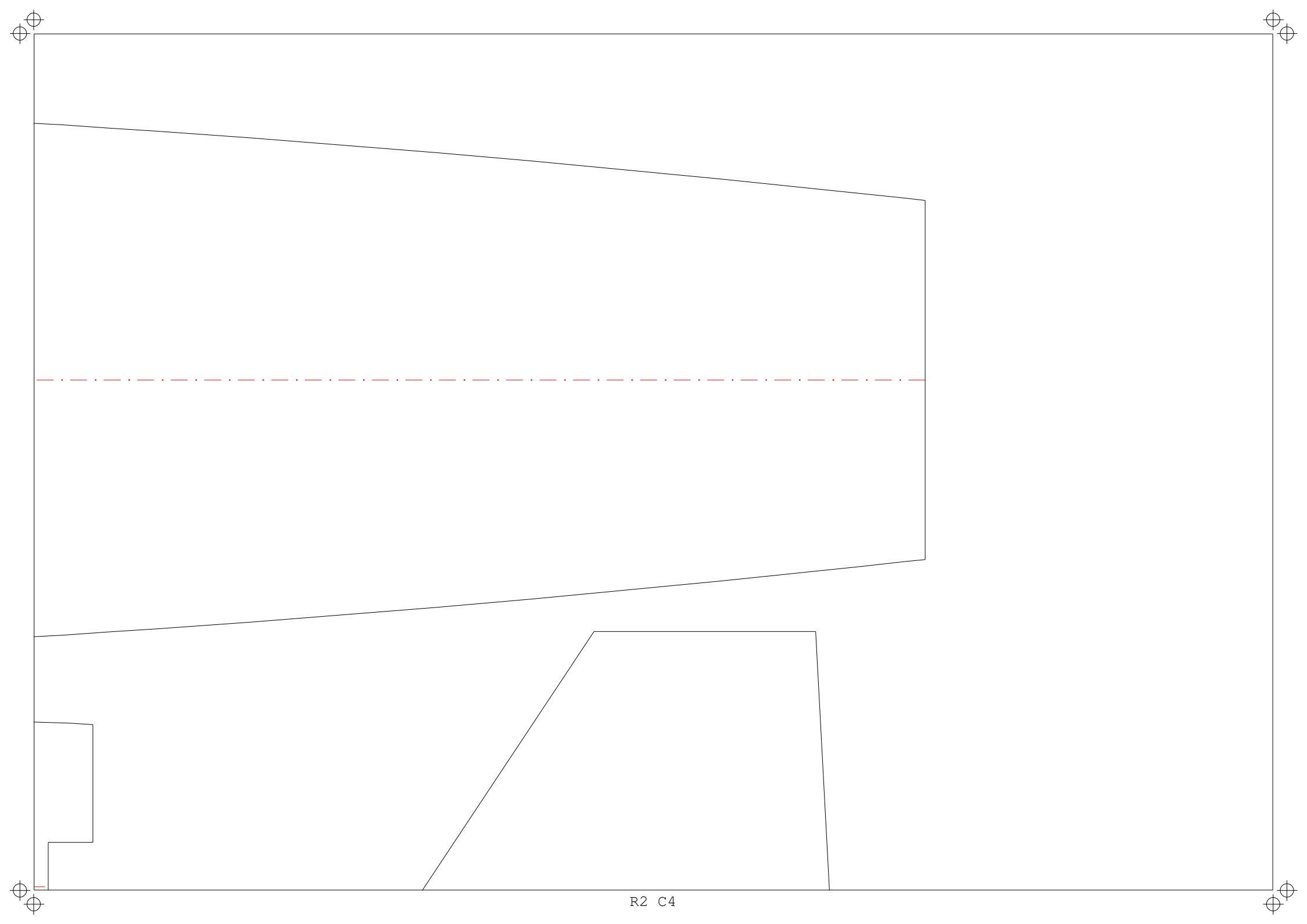




Aft Fuselage Bottom  
(make 1)

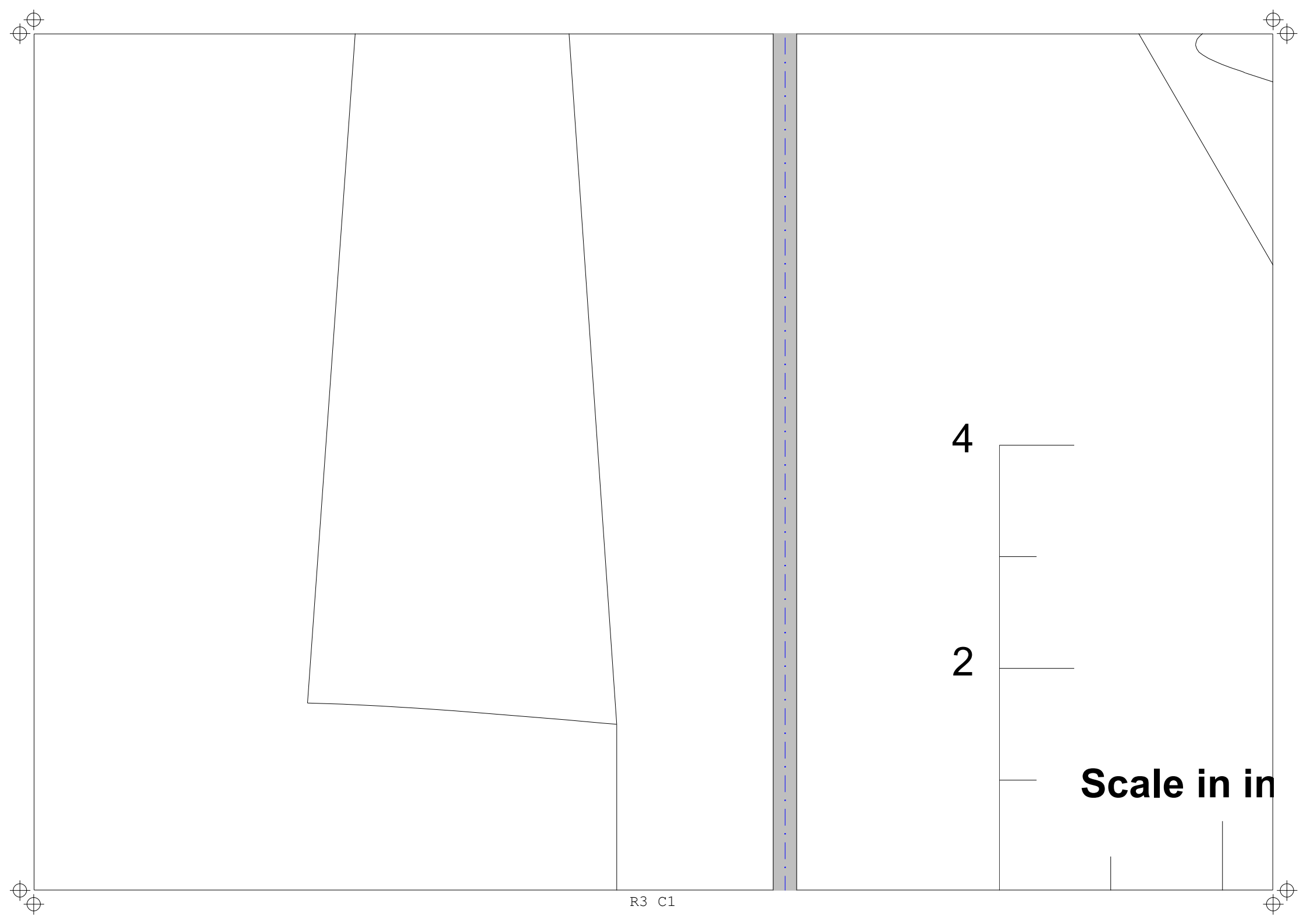
This technical drawing shows two cross-sectional views of an aircraft fuselage. The top section, labeled 'Aft Fuselage Bottom (make 1)', is a solid black line with a slight upward curve in the center. The bottom section, labeled 'Fwd Fuselage Bottom (make 1)', is a solid black line with a slight downward curve in the center. A horizontal red dash-dot line separates the two sections. The drawing is enclosed in a rectangular frame with four corner registration marks (circles with a crosshair). The text 'R2 C3' is located at the bottom center of the frame.

Fwd Fuselage Bottom (make 1)



R2 C4

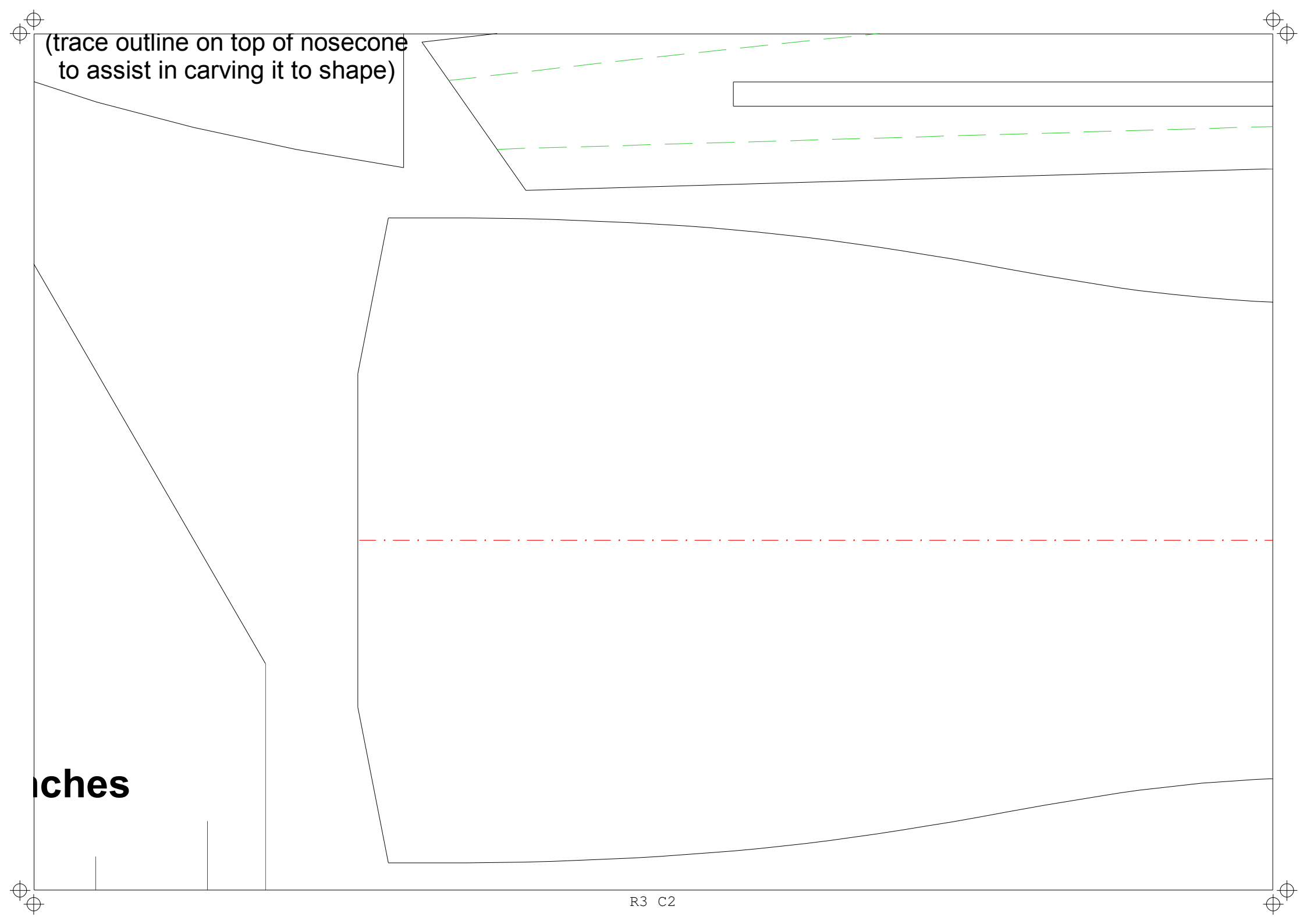




(trace outline on top of nosecone  
to assist in carving it to shape)

ches

R3 C2

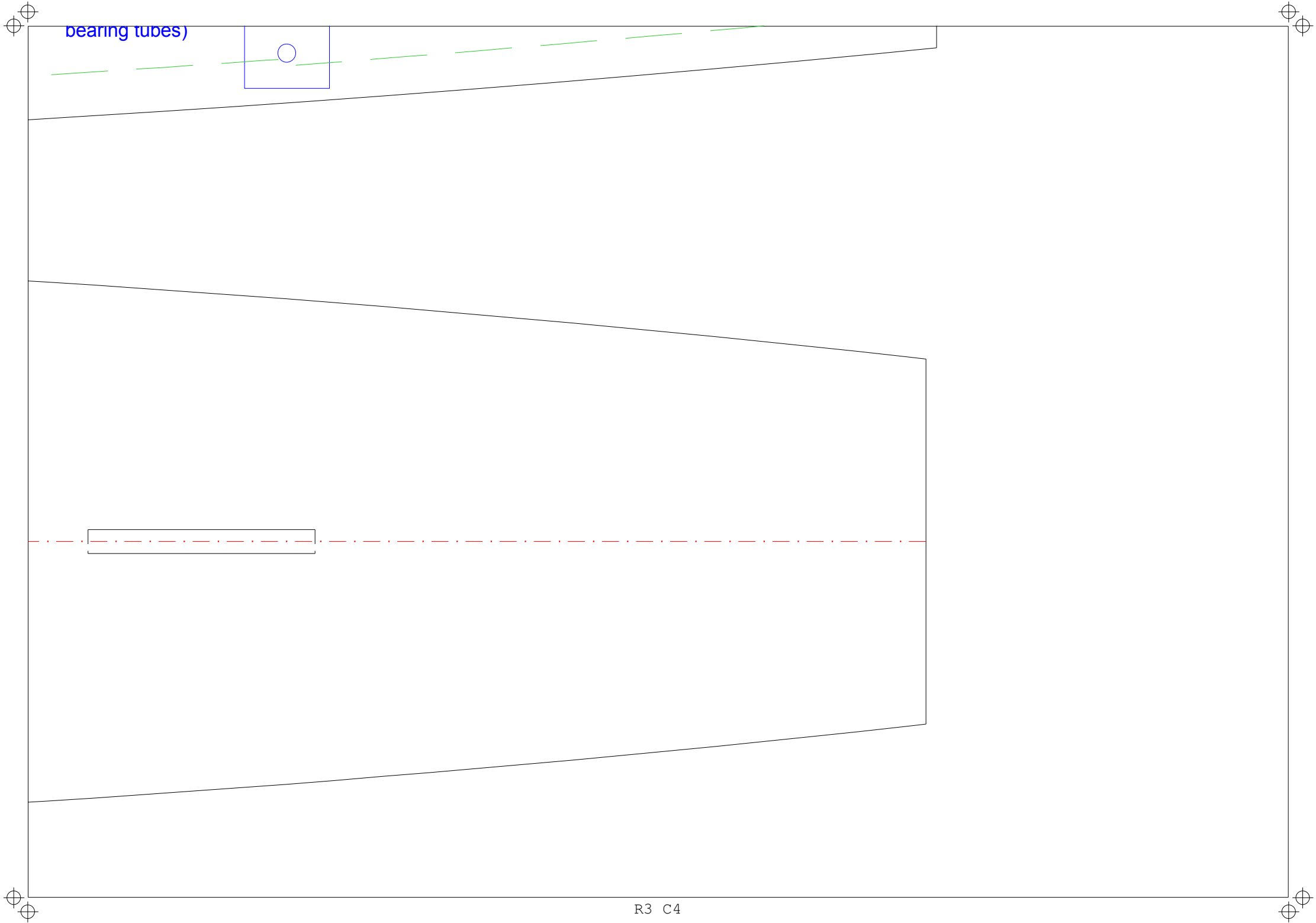


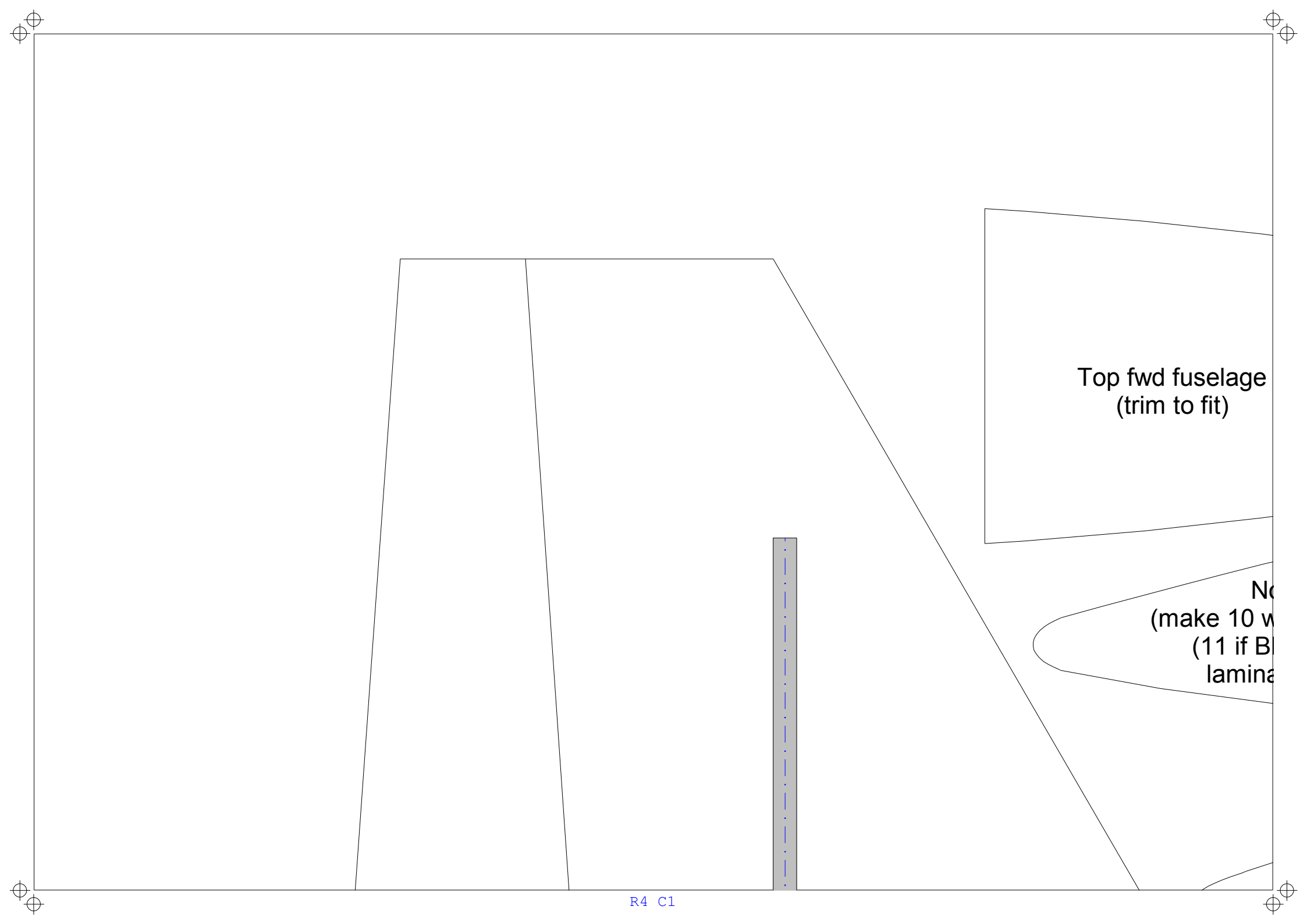
(make 2)

3/8" wide foam strip

Aft Fuselage Top  
(make 1)

Cut access hole as required  
to route servo wires to receiver

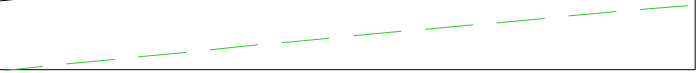
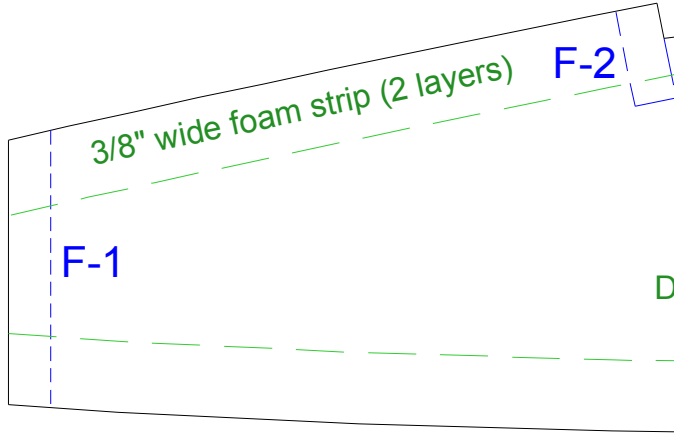
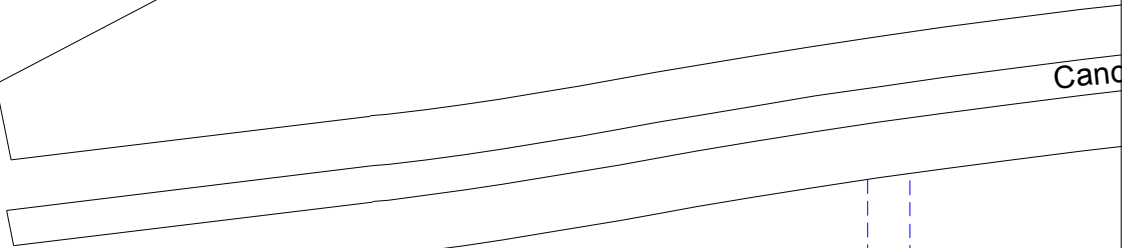
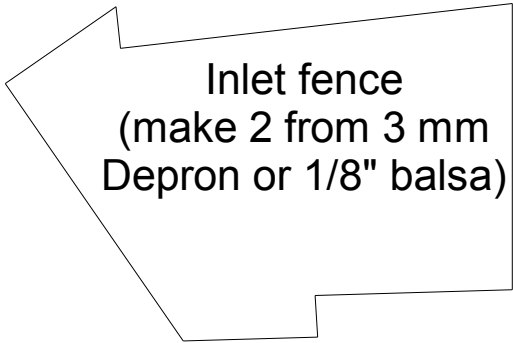
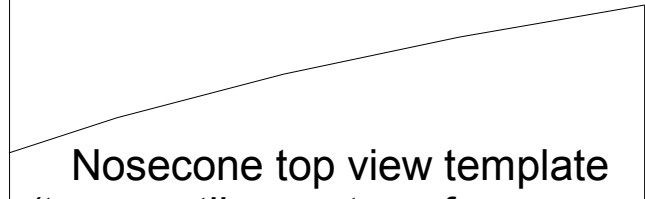
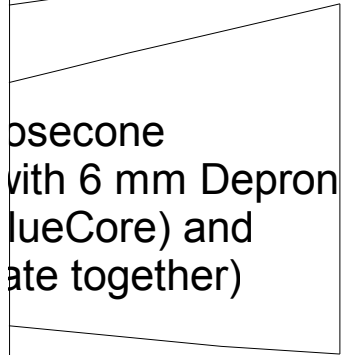
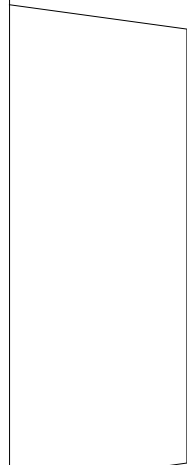




Top fwd fuselage  
(trim to fit)

No  
(make 10 w  
(11 if B  
lamine

R4 C1



Nosecone  
with 6 mm Depron  
(blueCore) and  
glue together)

Inlet fence  
(make 2 from 3 mm  
Depron or 1/8" balsa)

Note: Inside of can  
hollowed out if airpla  
already too t

F-1

F-2

F-3

Dashed green lines indicate where  
to attach foam strips

3/8" wide foam strip (2 layers)

3/8" wide foam strip (2 layers)

Nosecone top view template

Canopy  
(make 12 with 6 mm Depron  
(14 if BlueCore) and  
laminate together)

Canopy can be  
plane CG is not  
far aft

Canopy sill piece (make 2)

Laminate 2 foam strips (1/2"

OPTIONAL: To simulate crease in turtledeck, cut  
here, inset top piece inboard slightly, sand corner on  
lower piece round, add a foam support strip at  
bottom as shown, and glue back together.

F-4

Fwd Fuselage Sides (make 2)

3/8" wide foam strip

Aft Fuselage Sides

outboard, 3/8" inboard)

Cut hole for servo  
(press fit)

3/4" x 3/4" 1/64" ply  
doubblers on each side  
(drill 3/16" hole for pivot  
bearing tubes)

Motor mount  
(make 2 and  
lamine together)

3/4" x 5/8" 1/64" ply  
doubblers on inboard side  
drill 3/16" hole for pivot