

A 19-3/4" SPAN, 'JETEX' POWERED SCALE MODEL

D.H.108. (SWALLOW)

Designed by
D.P. GOLDING 3/-

Copyright of

The Aeromodeller Plans Service

38 CLARENDON RD. WATFORD HERTS

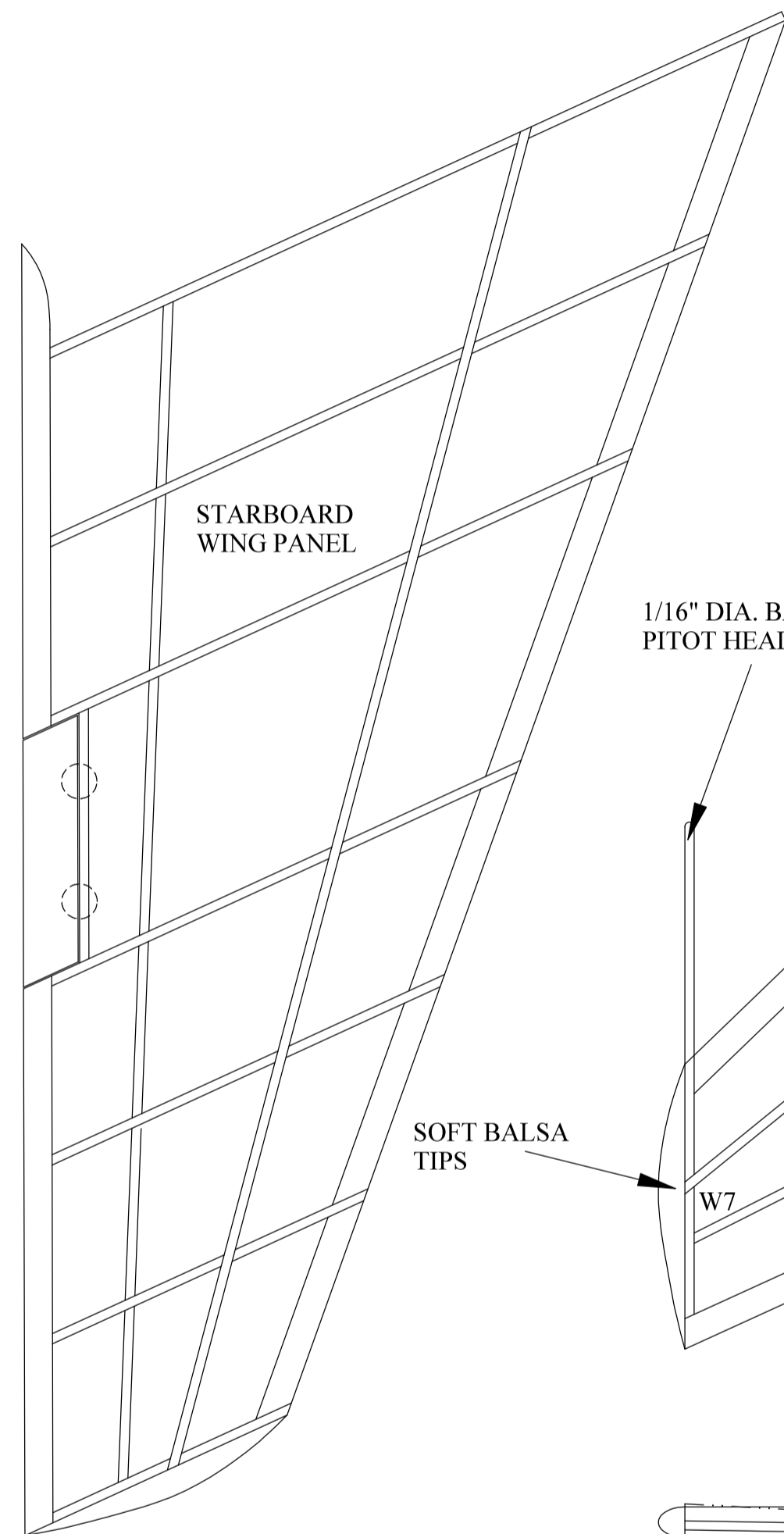
ALL WOODS UNLESS OTHERWISE STATED ARE Balsa



MATERIALS REQUIRED	
1 Balsa block	12-1/2" x 2-1/2" x 2" MED. SOFT
1 Balsa block	5" x 1/8" x 3/8" SOFT
1 Balsa block	3" x 1/2" x 1/2" HARD
1 SHEET OF	1/32" x 3" x 36" MED. SOFT
1 SHEET OF	1/16" x 3" x 36" MED. SOFT
2 STRIPS OF	1/16" x 1/16" x 36" MED. SOFT
4" x 2" OF	ACETATE SHEET
LIGHTWEIGHT TISSUE, 2 SHEETS	
DOPE, SILVER AND CLEAR	
LACQUER, BLACK	

INSTRUCTIONS FOR FUSELAGE

CARVE FUSELAGE FROM SOFT BLOCK TO EXTERNAL CONTOURS. MARK OUT COCKPIT, JET ACCESS HATCH & WING ROOT OPENINGS. CUT FUSELAGE INTO TWO IDENTICAL HALVES ON VERTICAL CL. HOLLOW OUT TO INTERNAL CONTOURS. GIVE FUSELAGE INSIDE A COAT OF CLEAR DOPE. LINE REAR HALF WITH ASBESTOS SHEET OR ALUMINIUM SHEET IF DESIRED. CEMENT TOGETHER THE TWO FUSELAGE HALVES, CUT OUT MARKED PORTIONS BUT RETAIN JET HATCH & HINGE TO FUSELAGE WITH SILK. HATCH IS SECURED ON OTHER SIDE WITH SELLOTAPE



1/16" DIA. BAMBOO PITOT HEAD

1/16" x 3/16" L.E.

SOFT Balsa TIPS

1/16" SQ. TOP & BOTTOM

ADJUSTABLE TRIM TAB
SOFT FOIL HINGES

1/16" x 3/16" T.E.

FIN ROOT FAIRING

3/8" SHEET FAIRING

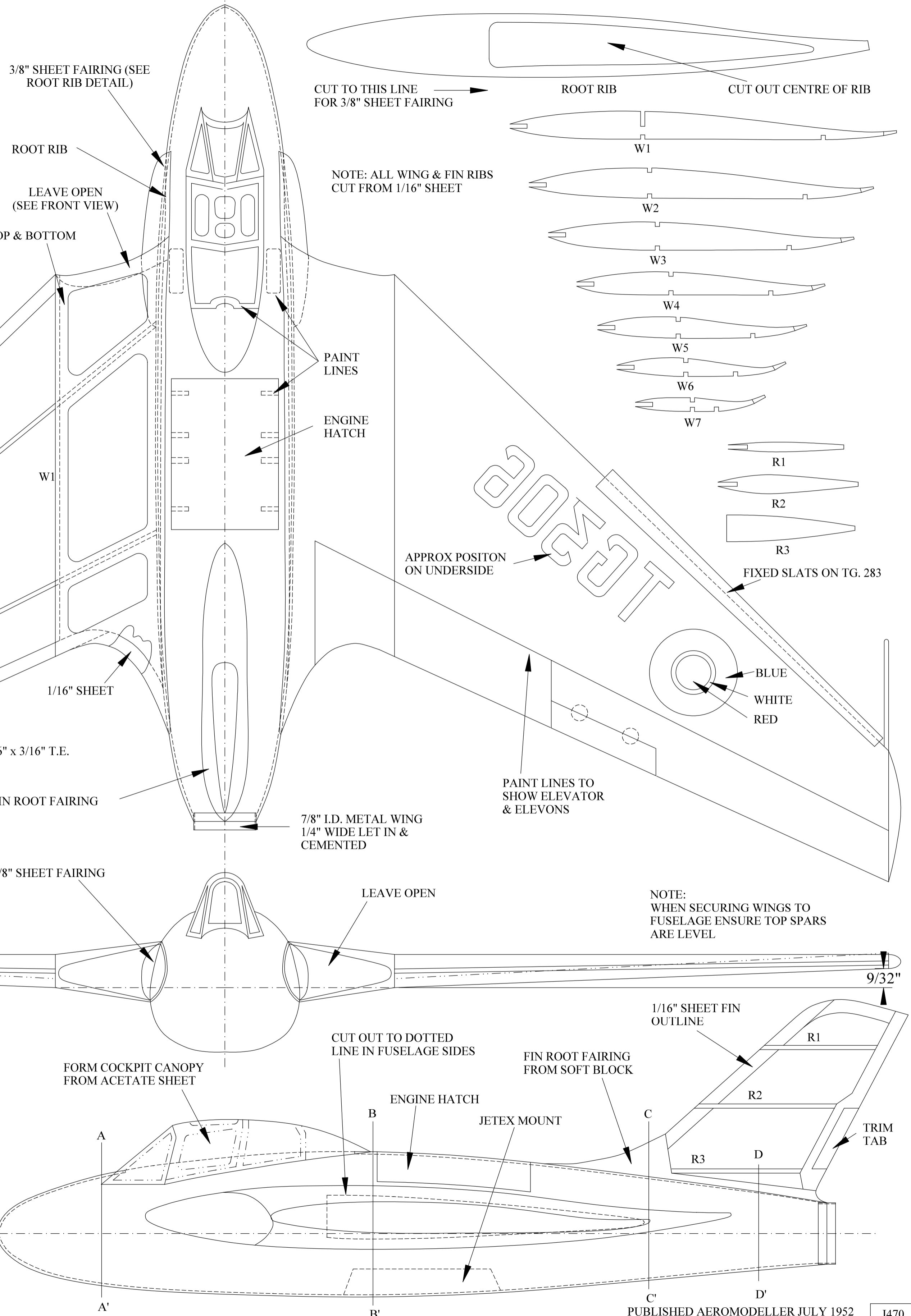
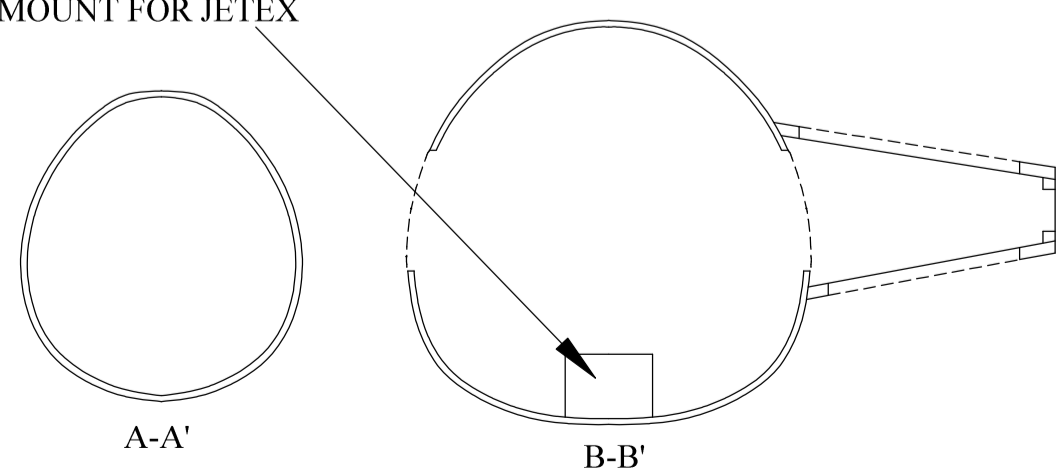
DASHED LINE INDICATES T.E.

CUT OUT CENTRE

FRONT ROOT SPAR 1/16" SHEET

REAR SPAR 1/16" SHEET

2-1/4" x 1/2" x 3/8" HARD Balsa MOUNT FOR JETEX



CUT TO THIS LINE FOR 3/8" SHEET FAIRING

ROOT RIB

CUT OUT CENTRE OF RIB

W1

W2

W3

W4

W5

W6

W7

R1

R2

R3

FIXED SLATS ON TG. 283

BLUE

WHITE

RED

9/32"