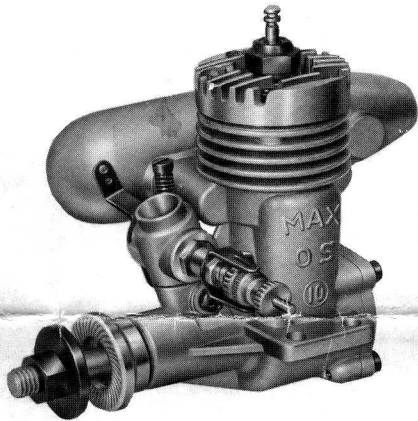


INSTRUCTIONS O.S. MAX-10 R/C ENGINE



The MAX-10R/C engine has been designed specially for single channel radio control models and is notable for its easy handling, excellent throttling characteristics and light weight. It is manufactured by skilled craftsmen to strict tolerances using modern precision machinery and carefully selected top quality materials, to ensure consistent performance and long life.

BREAKING-IN

Every O.S. engine is tested before shipment but additional running is necessary for long life and highest performance. Break-in your engine in the following way.

- 1) Run your engine for a total of 20 to 30 minutes, with 7x4 or 8x4 propeller and a mild fuel. Let the engine run with a rich needle-valve setting (4-cycle) at this stage, so as to avoid overheating. Break-in time is best accumulated by running the engine for periods of about 2 minutes with a short cooling-off period between each run.
- 2) Then, with the same propeller and fuel, run the engine with a 2-cycle setting, for a further 20 to 30 minutes. If the engine stops or the revolutions fall off at the maximum R.P.M. setting, your break-in is not complete. In this case repeat above procedure.

FUEL

Use good commercial glow fuel or one of the fuel mixtures shown in the table.

GLOW PLUG

The suitability of the glow-plug greatly affects the performance of Radio Control engines. Select the best one, by practical tests, from the glow-plugs designed especially for R/C engines. The O.S. No. 7 shielded type glow-plug is very suitable for the MAX-10 R/C.

PROPELLER

Suggested propellers are 7x4, 8x3 or 8x4 but, as the suitability of the propeller varies according to size and weight of the model, make your final selection after practical experiment.

INSTALLATION

Mount your engine securely on hard wood bearers. Make sure that the bearers are parallel and that their mounting surfaces are in the same plane, so as to avoid risk of distorting the crankcase. Use adequate size mounting bolts and use locknuts to make sure that the engine does not loosen with vibration.

SPECIFICATION

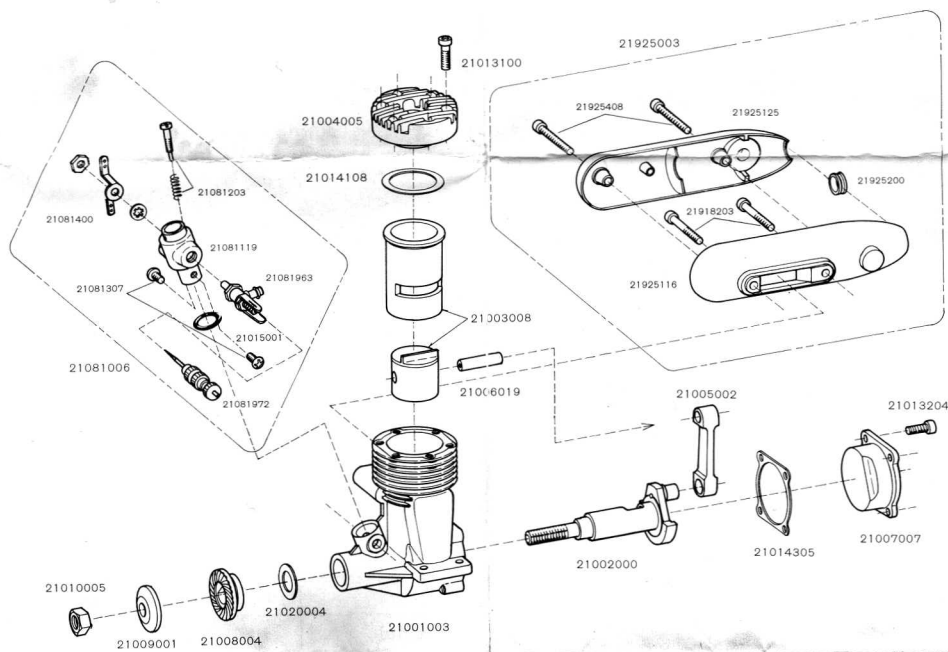
Displacement	1.76c.c. (.107 cu. in.)
Bore	13.4mm. (.529 in.)
Stroke	12.4mm. (.488 in.)
Practical R.P.M.	2,500 ~ 14,000
Weight	85g. (3.00 oz.)

FUEL

	Break-in	General	Contest
Methanol	70%	75%	70%
Castor-oil	30%	25%	25%
Nitromethane			5%

MAINTENANCE

Always keep your engine clean and do not let any sort of dust or dirt enter the interior of the engine.
Do not disassemble the engine unnecessarily.



“ENJOY QUIETER R/C FLYING BY INSTALLING THE O.S. SILENCER”

PARTS LIST

Code. No.	Description	Code. No.	Description
21001003	Crank Case	21010005	Propeller Nut
21002000	Crank Shaft	21013007	Screw Set
21003008	Piston & Cylinder Liner Assembly	21014108	Cylinder Head Gasket
21004005	Cylinder Head	21014305	Cover Plate Gasket
21005002	Connecting Rod	21081006	Carburettor Throttle Assembly
21006019	Piston Pin	21082003	Exhaust Throttle Assembly
21007007	Cover Plate	21081909	Needle Valve Assembly
21008004	Drive Washer	21018003	Speed Controller Assembly
21009001	Propeller Washer		

O. S.

OGAWA MODEL MFG. CO., LTD.

83, HIRANOBABA, HIGASHISUMIYOSHI,
OSAKA, 546 JAPAN.