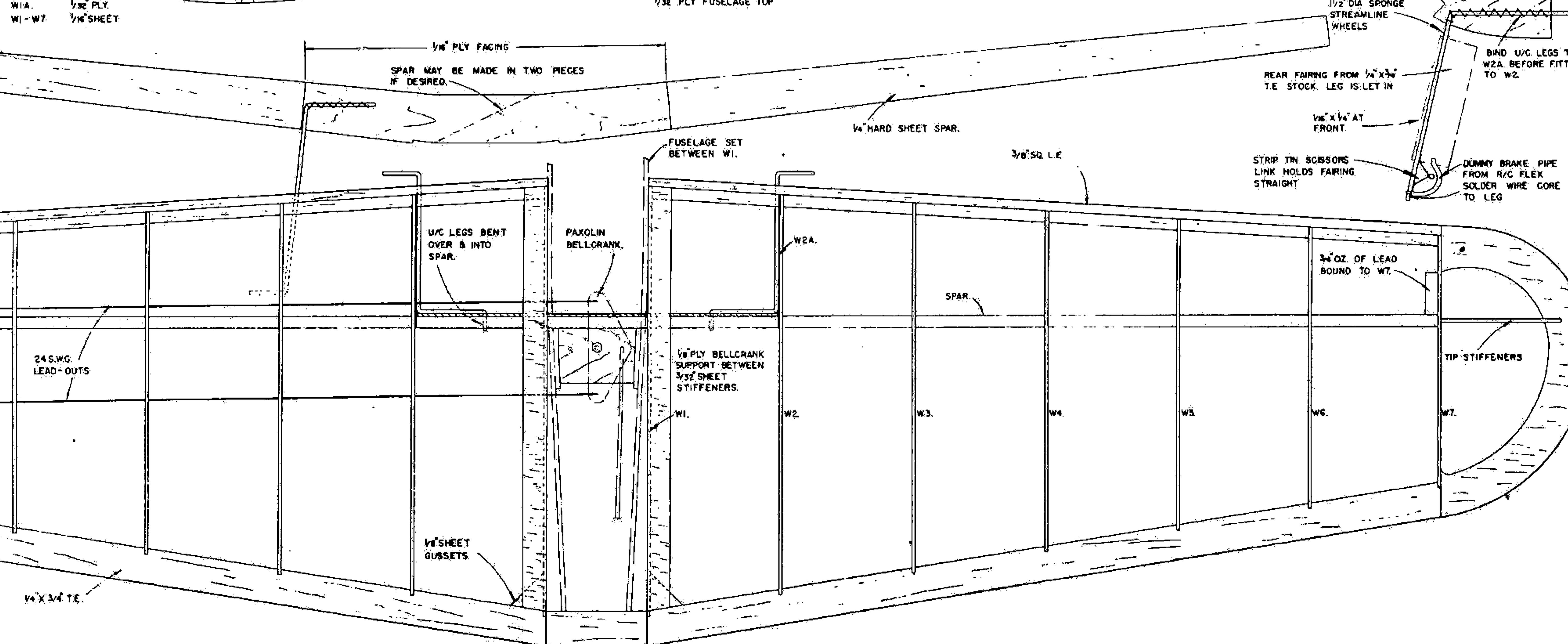
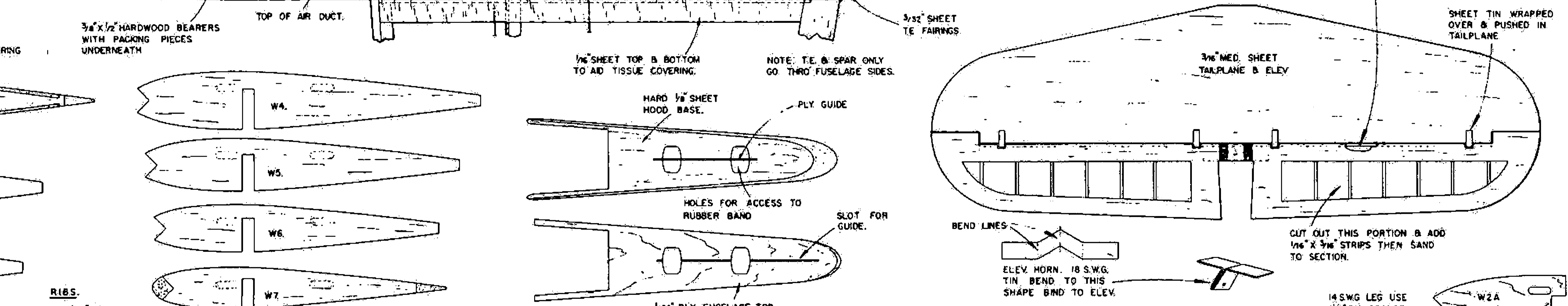
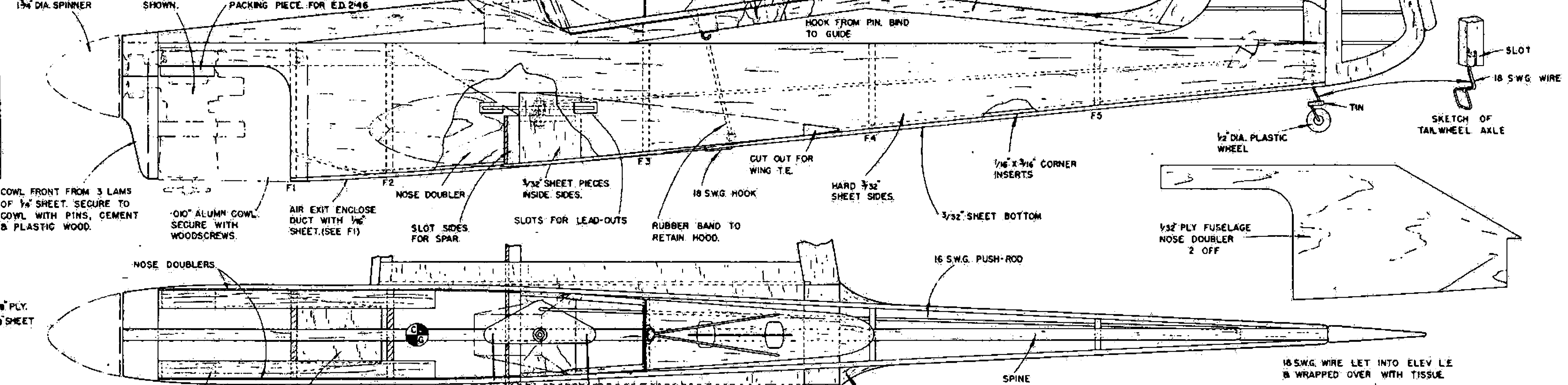
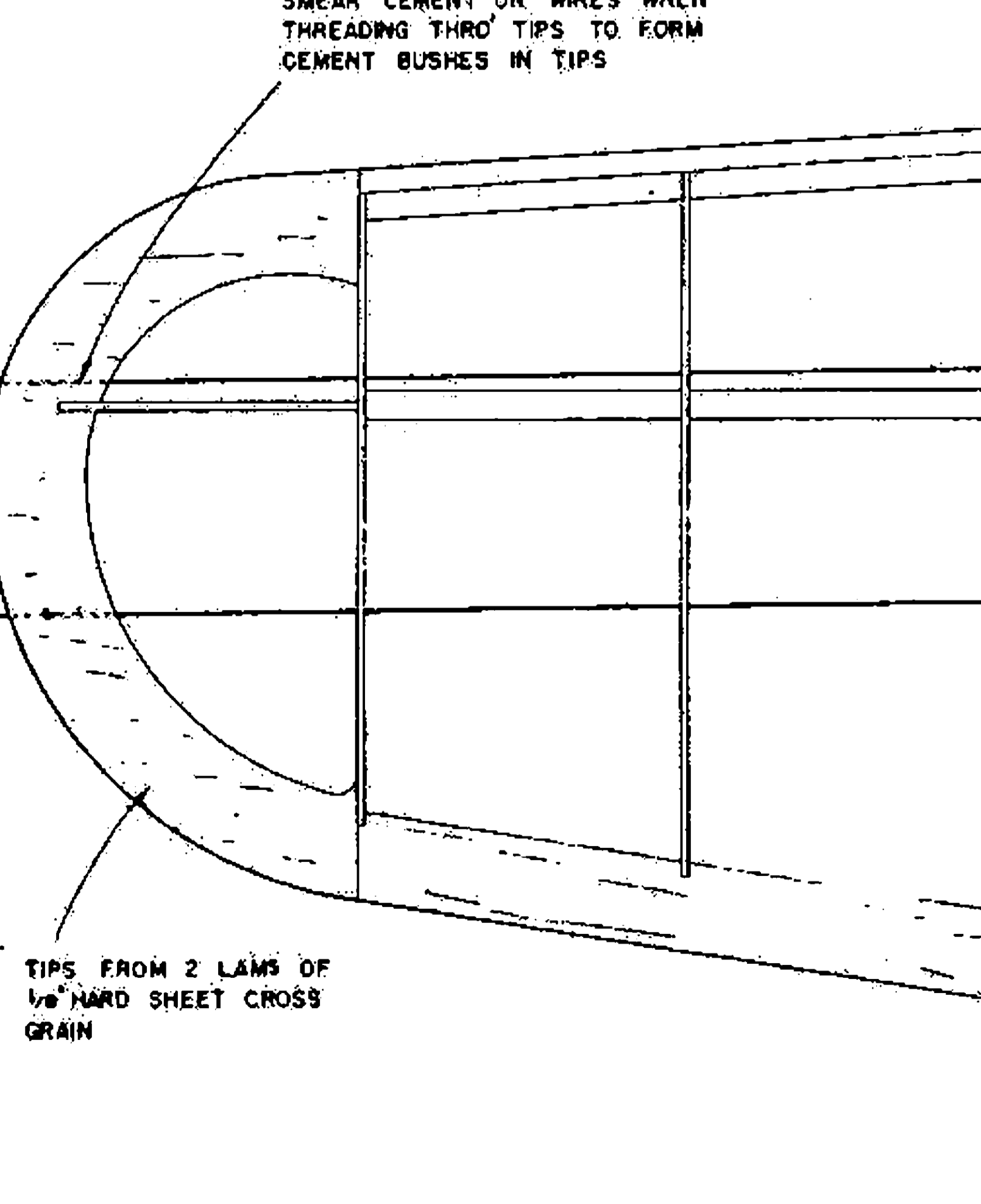
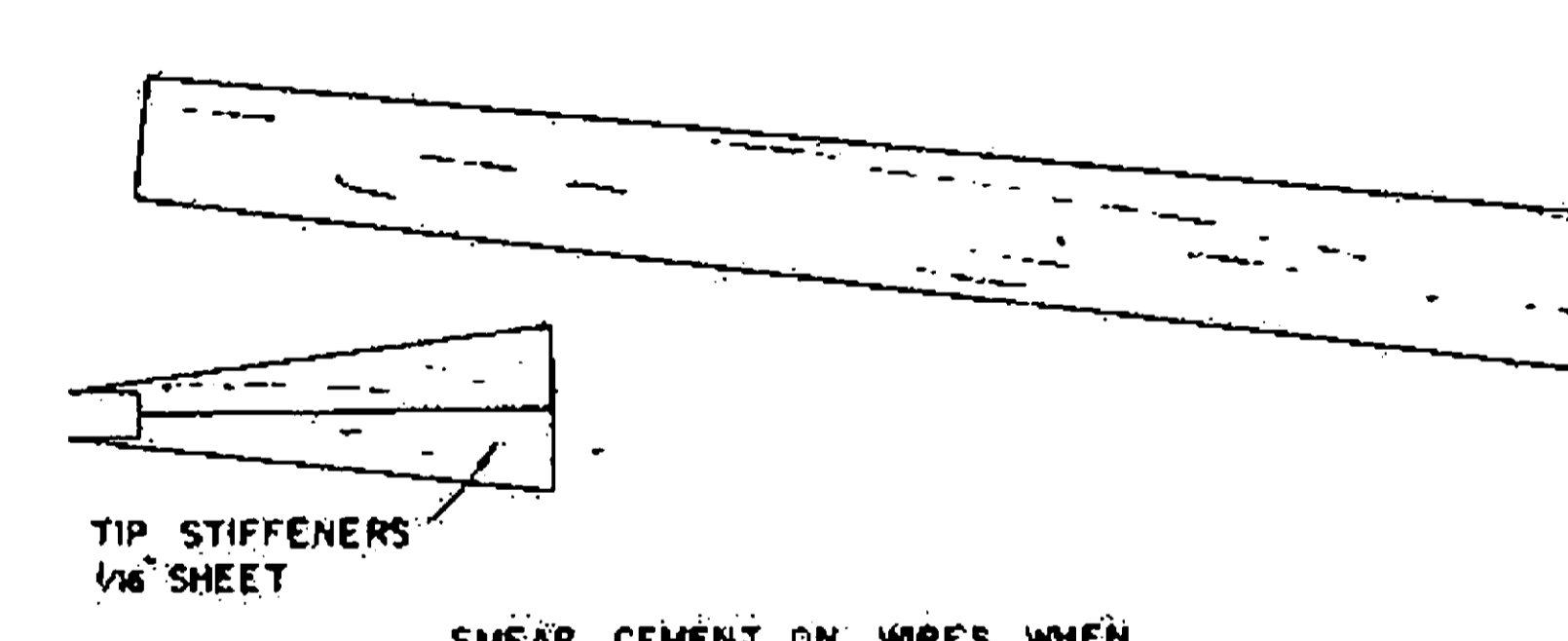
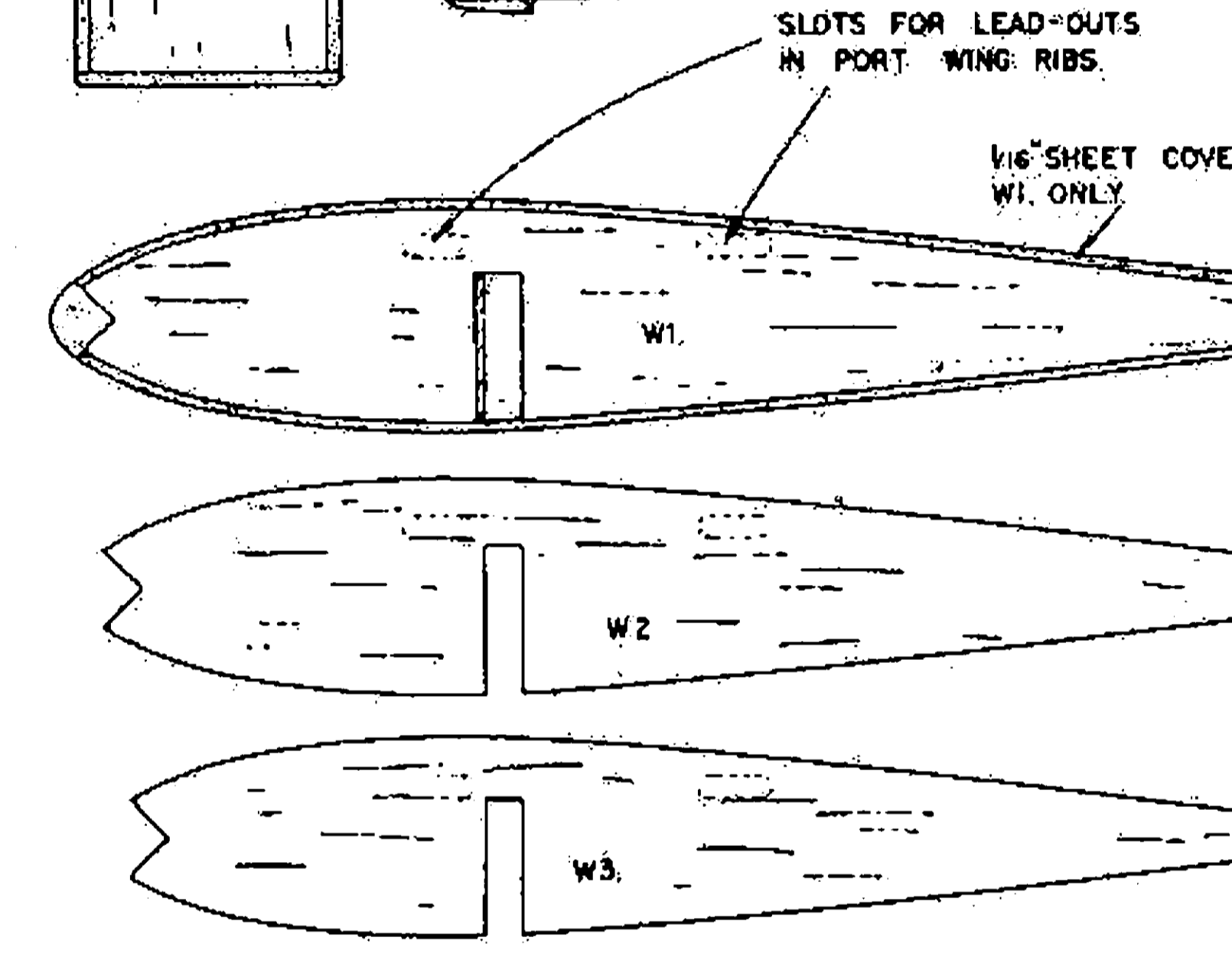
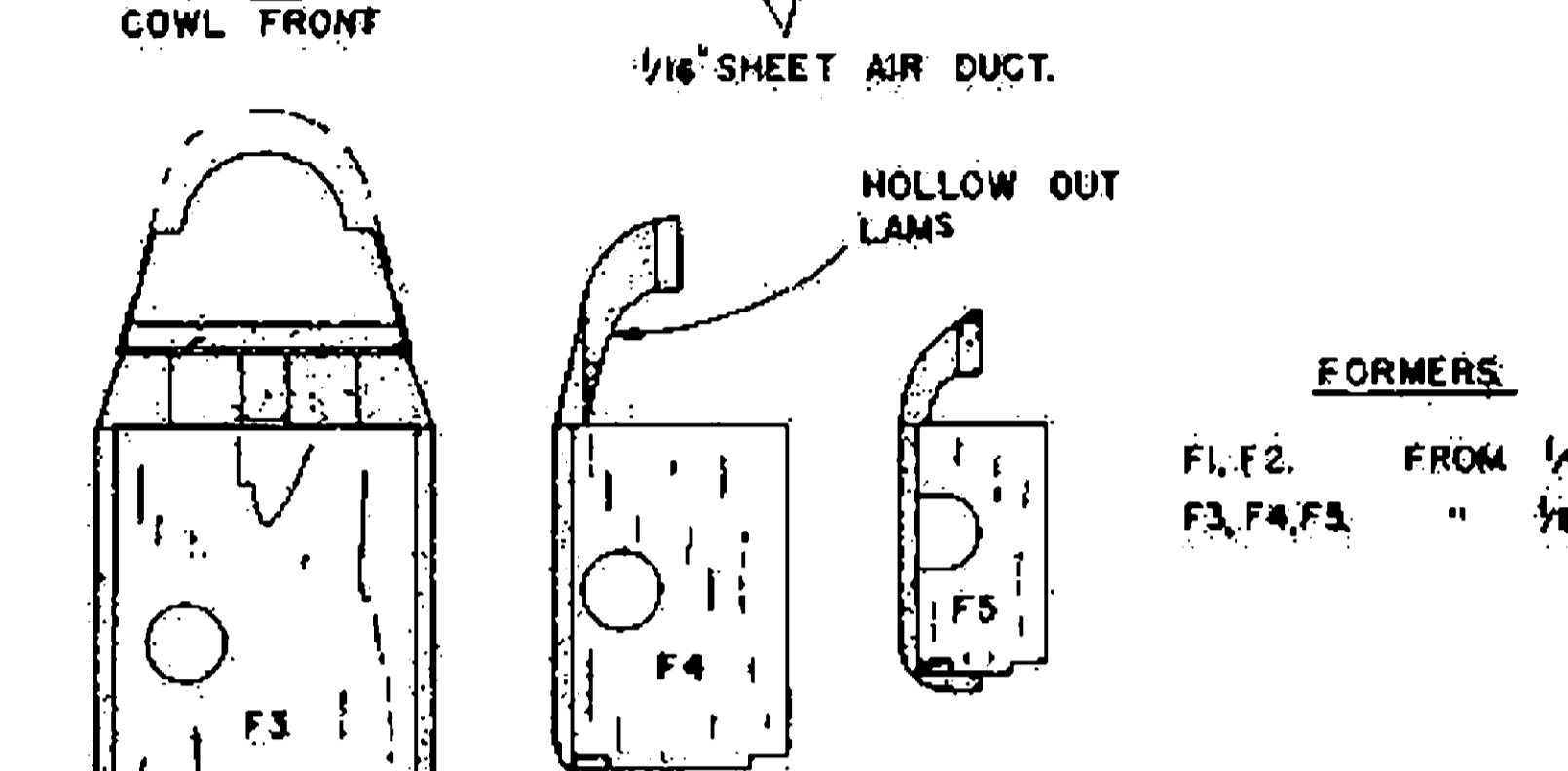
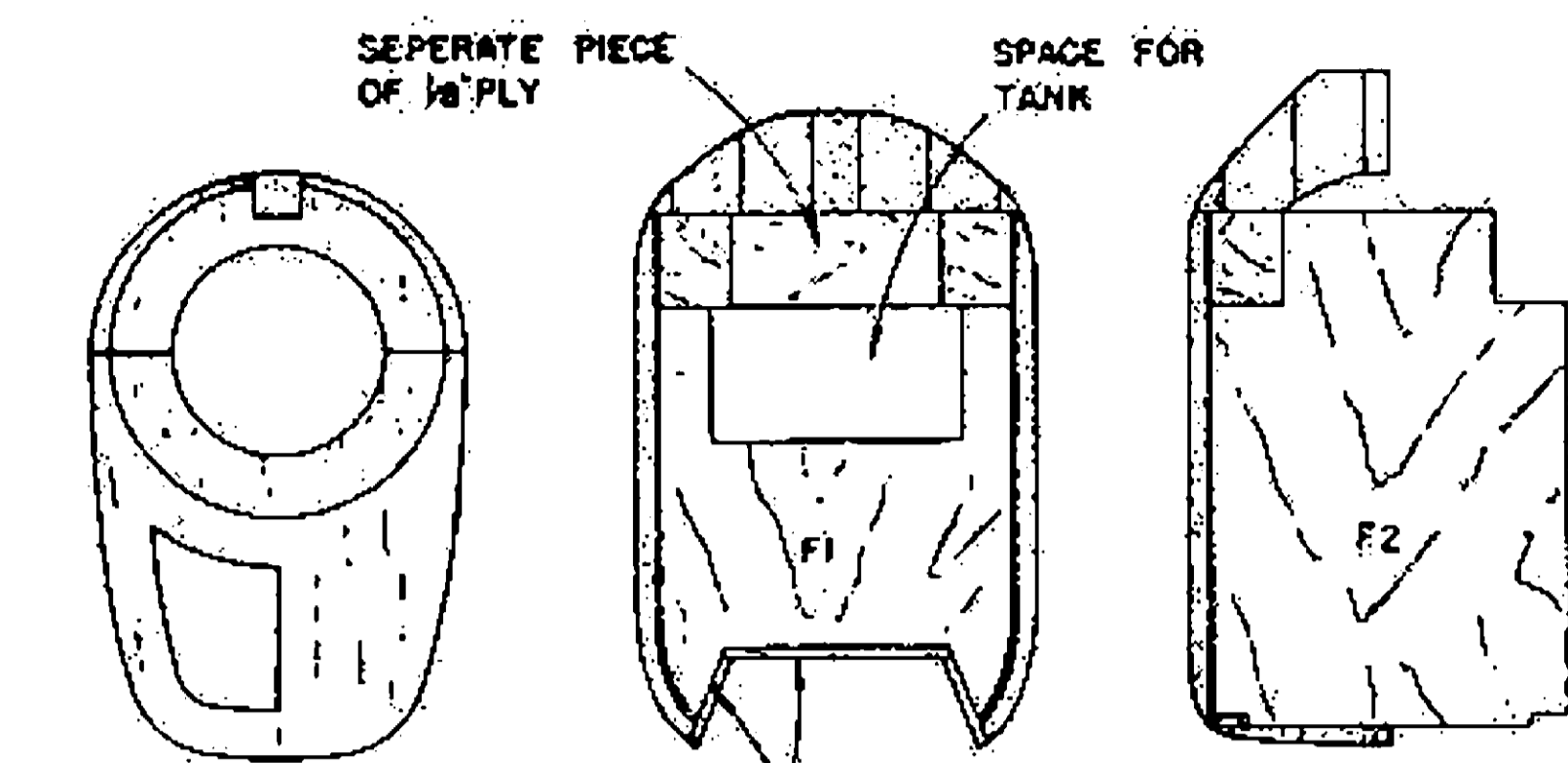
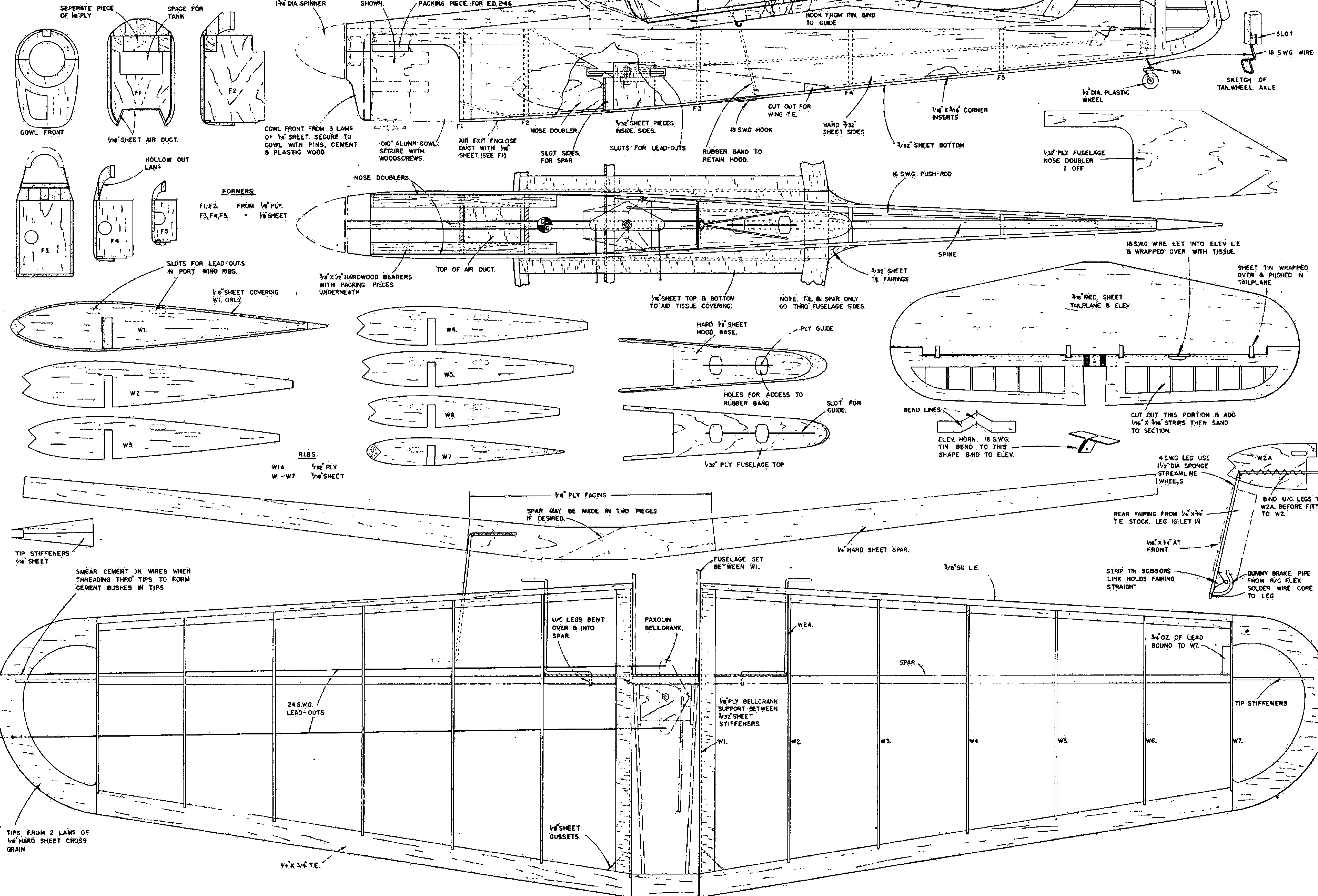


'334G'
 DESIGNED BY
Pete Russell.
 COPYRIGHT OF
THE AEROMODELLER PLANS SERVICE
 38, CLARENDON RD., WATFORD, HERTS.

ALL WOODS ARE BALSA UNLESS OTHERWISE STATED.

MATERIALS REQUIRED		REQUIREMENTS
1 STRIP	OF 1/16" x 3/16" x 36" MED. BALSA	1 SQ. FT. OF 1/32" PLY
2	" " " " " " " "	8" x 2" " 1/16" "
2 T.E.	" " " " " " " "	1/4" x 3/16" x 36" HARD "
2 SHEETS	" " " " " " " "	6" x 6" " 1/8" "
2	" " " " " " " "	6" x 9" " 0.20" BEXOID
2	" " " " " " " "	SMALL PIECES OF TINPLATE
1	" " " " " " " "	8" x 8" OF 0.02" ALUMINUM
1	" " " " " " " "	3/4 OZ. OF LEAD
2	" " " " " " " "	1 LENGTH EACH OF 24, 18, 16 & 14 S.W.G. WIRE



FULL SIZE COPIES OF THIS 1/5th SCALE DRAWING CAN BE OBTAINED FROM THE AEROMODELLER PLANS SERVICE BY QUOTING NUMBER CL/632 PRICE 6/- POST FREE