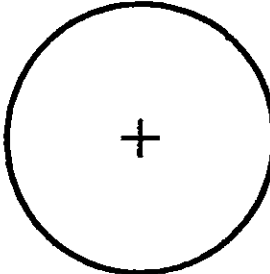
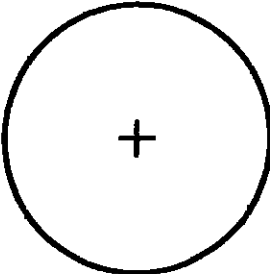
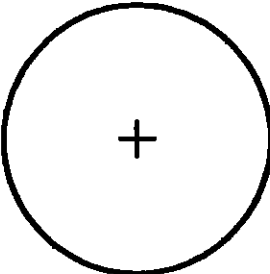


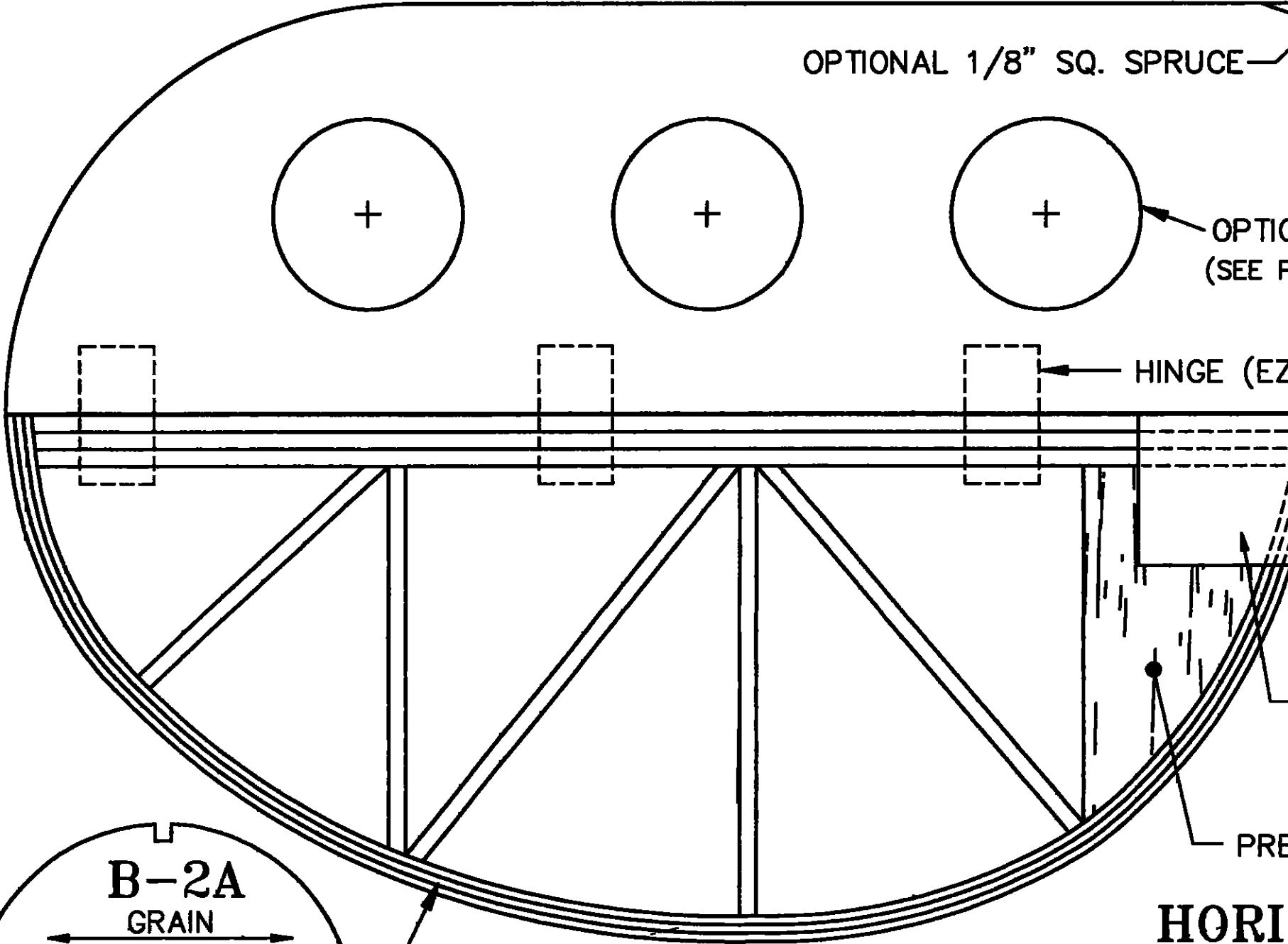
OPTIONAL 1/8" SQ. SPRUCE



OPTIO
(SEE P



HINGE (EZ

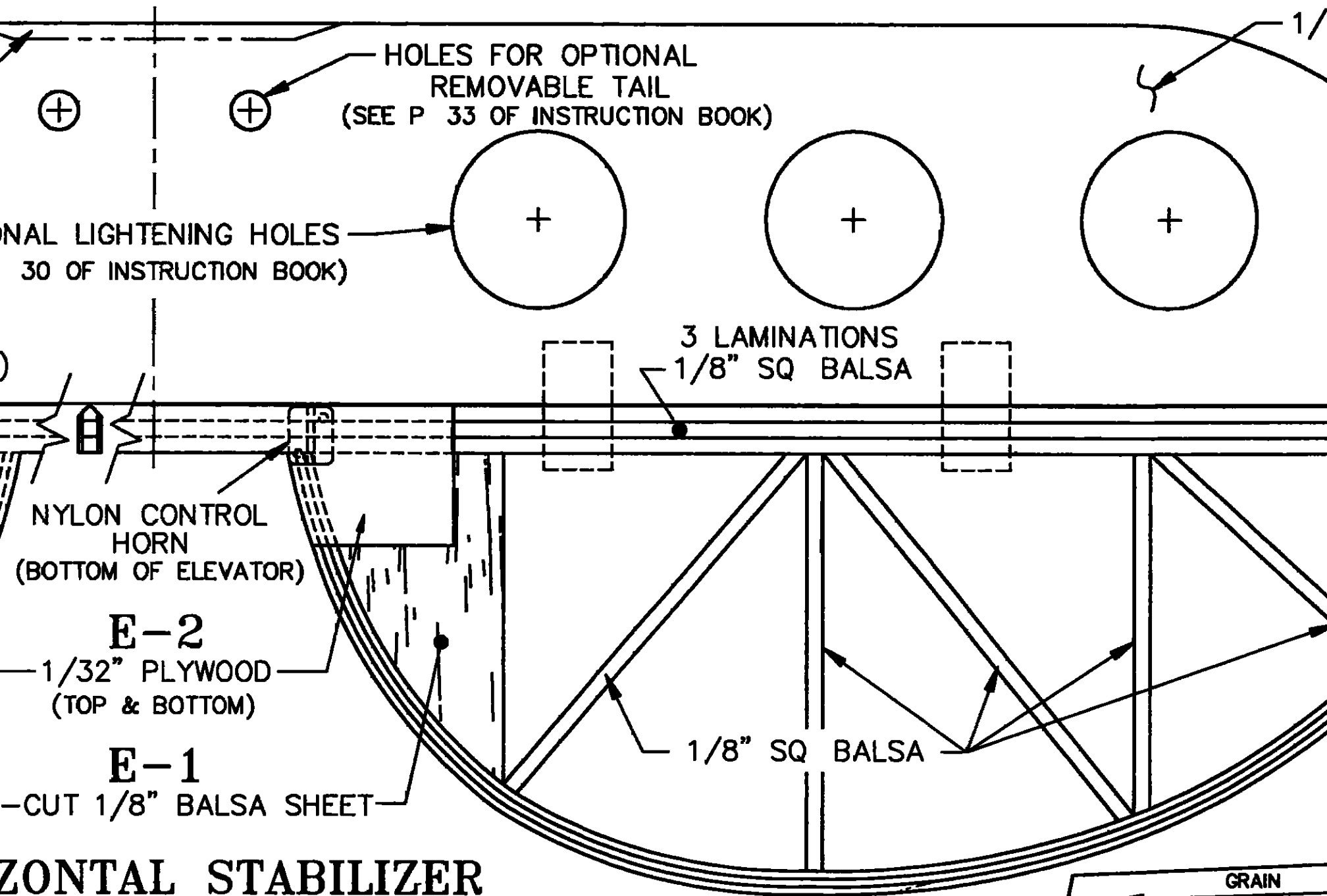


B-2A
GRAIN

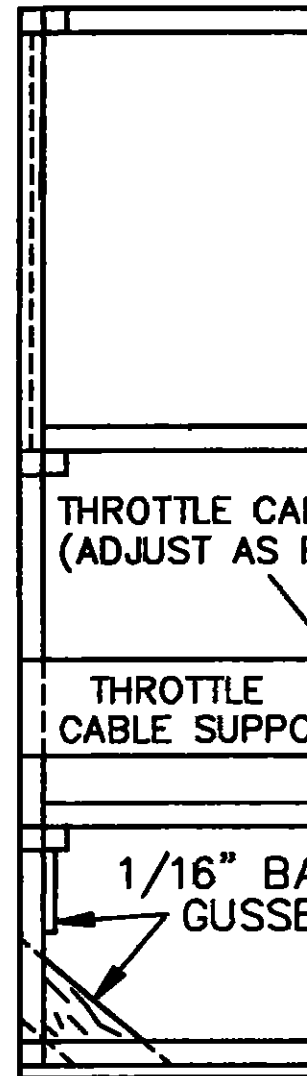
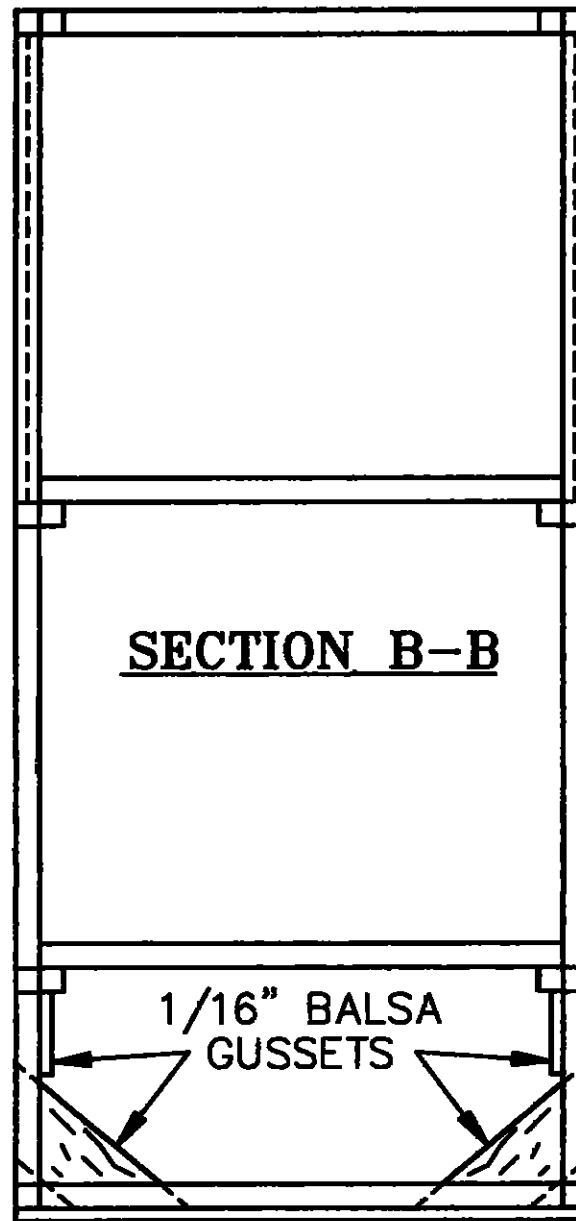
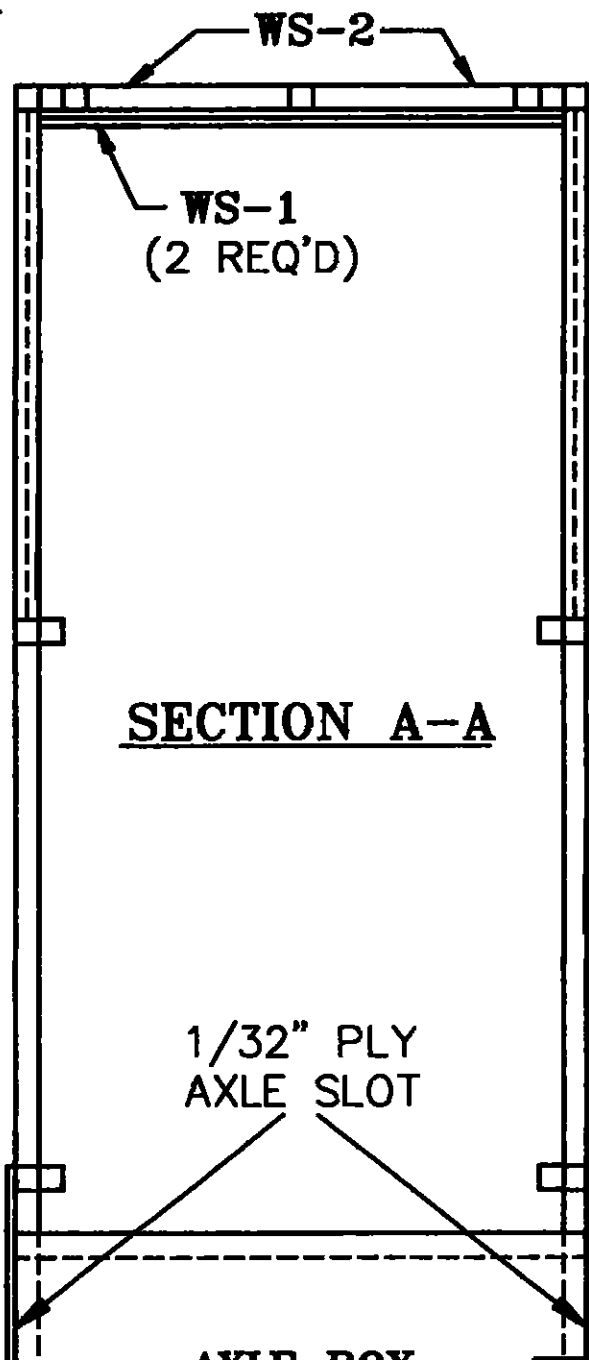


PRE

HORIZ

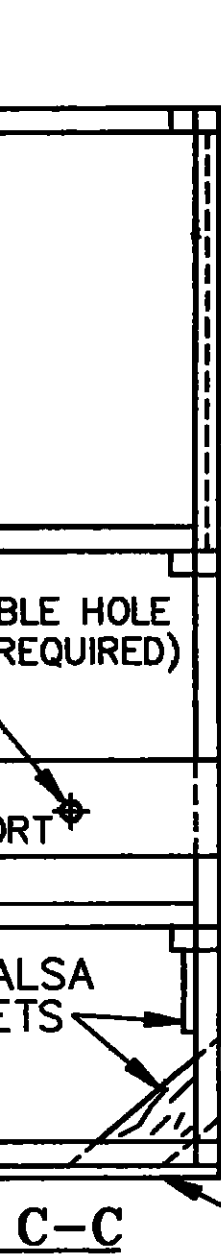


8" Balsa Sheet



SECTION

1/16" DIA



BAMBOO WING MOUNTING DOWEL (RUBBER BAND MOUNTED WING)

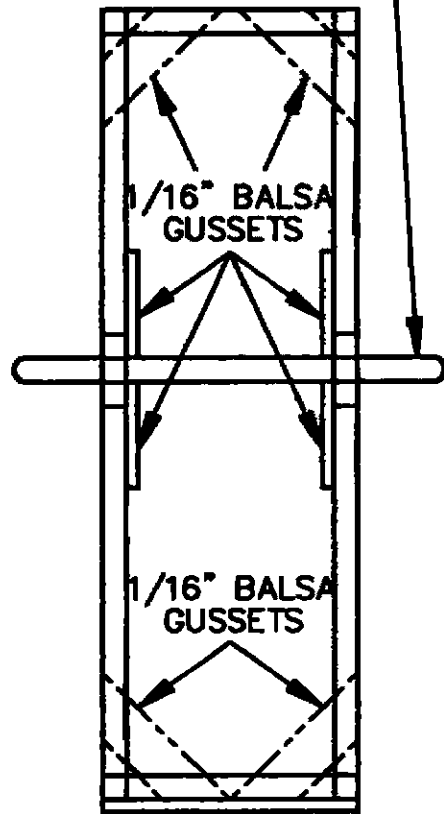
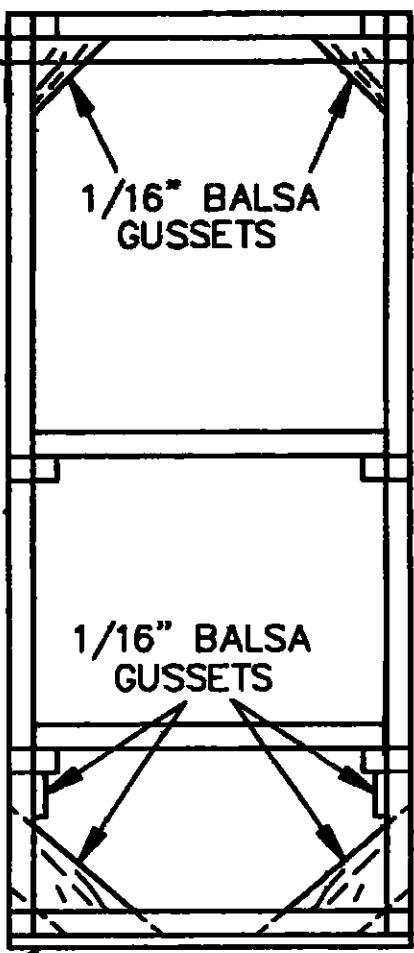
BAMBOO DOWEL FOR OPTIONAL REMOVABLE TAIL

USE 1/4 SCALE HINGES AND A LONG HINGE PIN TO MAKE RUDDER REMOVABLE

BAMBOO DOWEL
RUBBER BAND (#30)
HINGE PIN RETAINER

DETAIL A - 0

(SEE P



SECTION D-D

SECTION E-E

1/16" Balsa BOTTOM SHEET (CROSS GRAIN)

F-1
1/8" Balsa
(2 REQ'D)

GRAIN

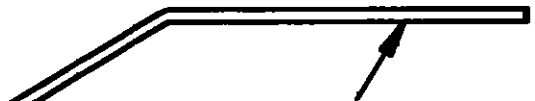
MUSIC WIRE

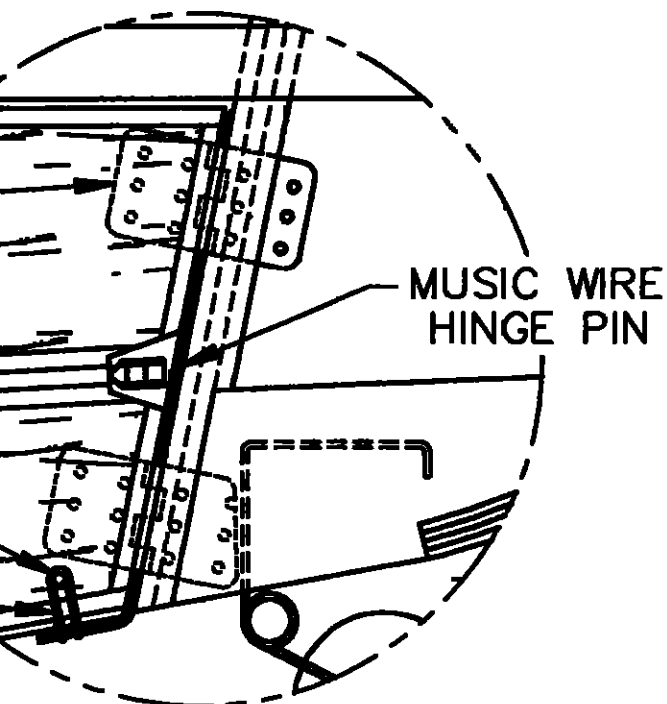
BLE HOLE (REQUIRED)

PORT

Balsa GUSSETS

C-C





NOTE!

DUE TO CHANGES IN TEMPERATURE AND HUMIDITY, THE PAPER PLANS MAY EXPAND OR CONTRACT SLIGHTLY. THEREFORE, THE PARTS MAY NOT EXACTLY MATCH THE PLANS THIS WILL NOT AFFECT AIRCRAFT PERFORMANCE. ASSUME THE DIE-CUT PARTS ARE CORRECT AND ADJUST YOUR ASSEMBLY AS REQUIRED.

OPTIONAL REMOVABLE RUDDER

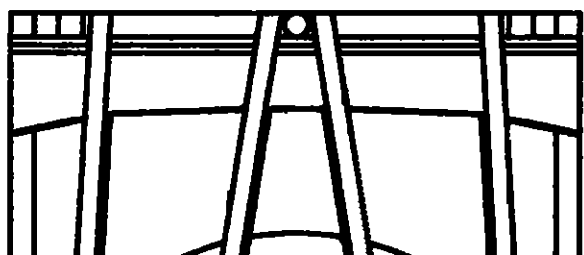
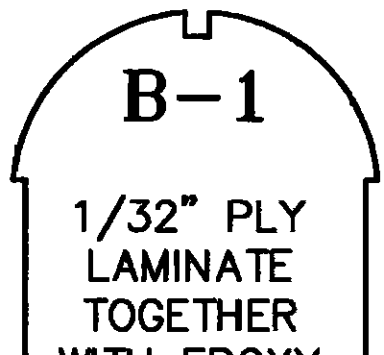
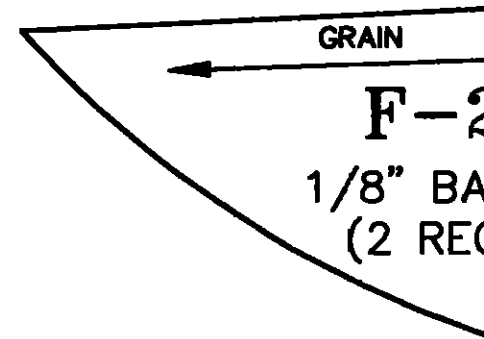
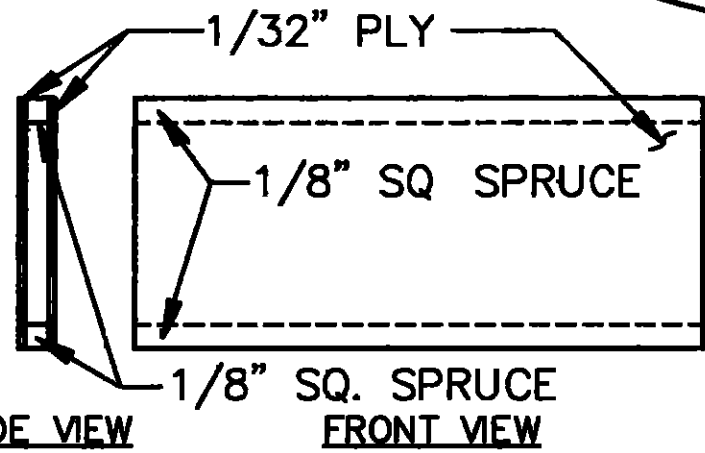
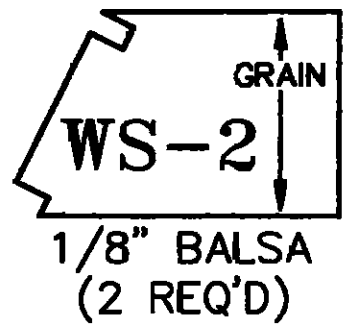
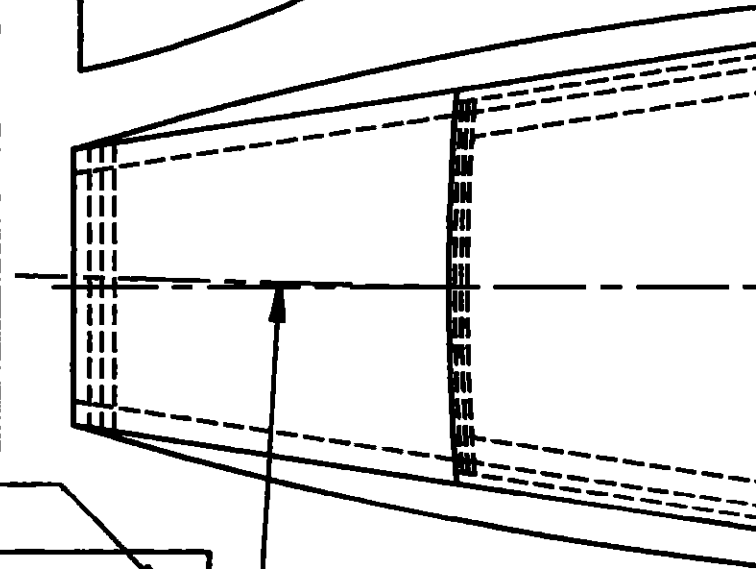
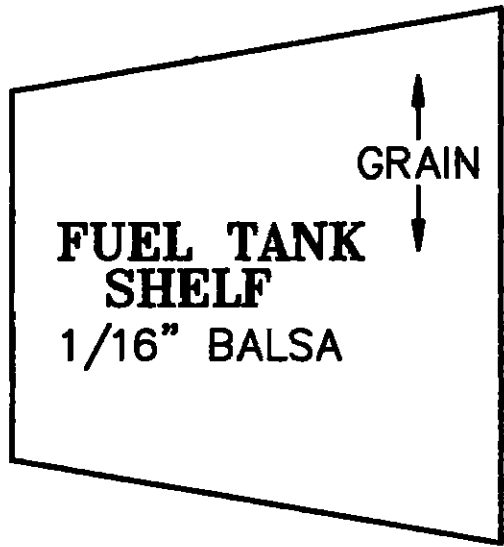
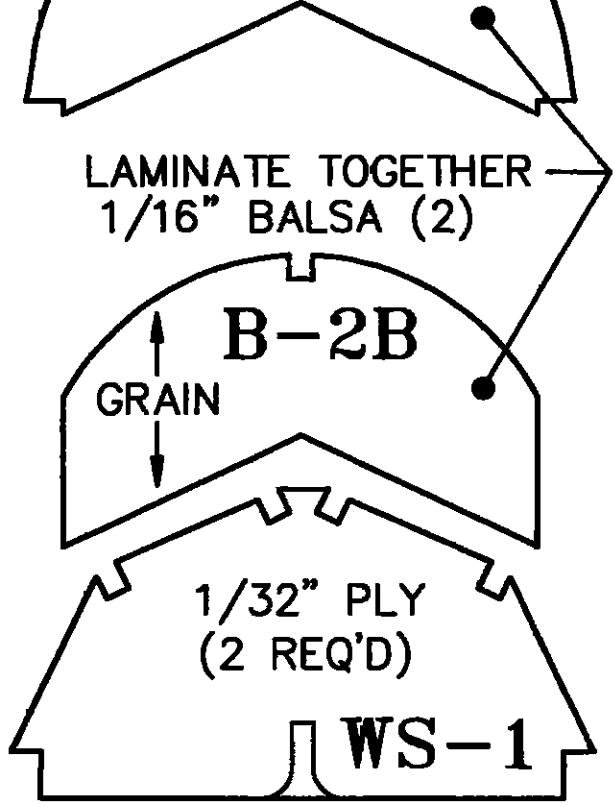
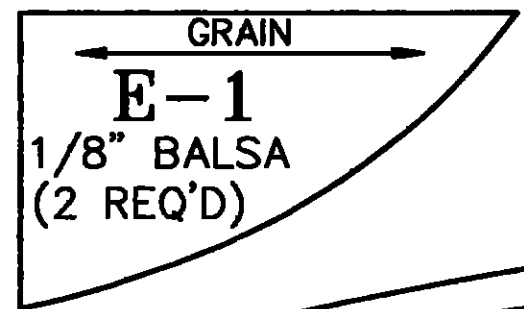
SCALE 3/4

(SEE PAGE 33 OF INSTRUCTION BOOK)

A large, simple line drawing of a semi-circular shape, representing the lamination pattern for an elevator. The shape is a smooth curve with a flat base. A dashed line extends from the bottom right corner of the curve.

ELEVATOR LAMINATION PATTERN

3 LAMINATIONS OF
1/16" x 1/8" BALSA



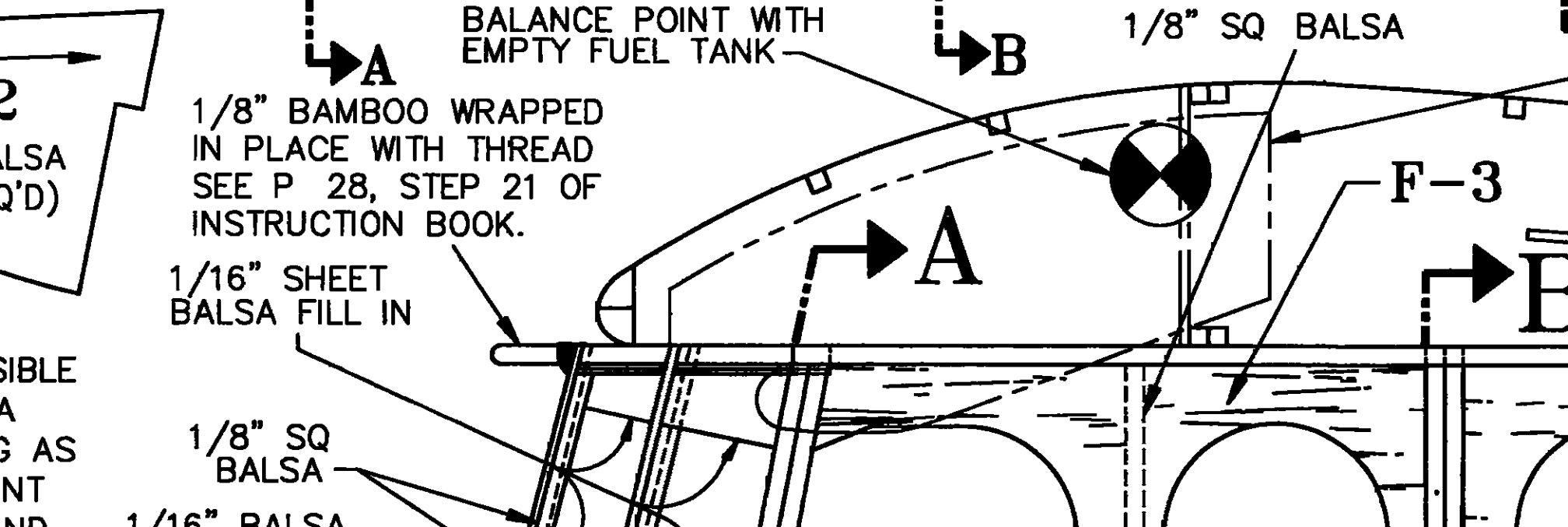
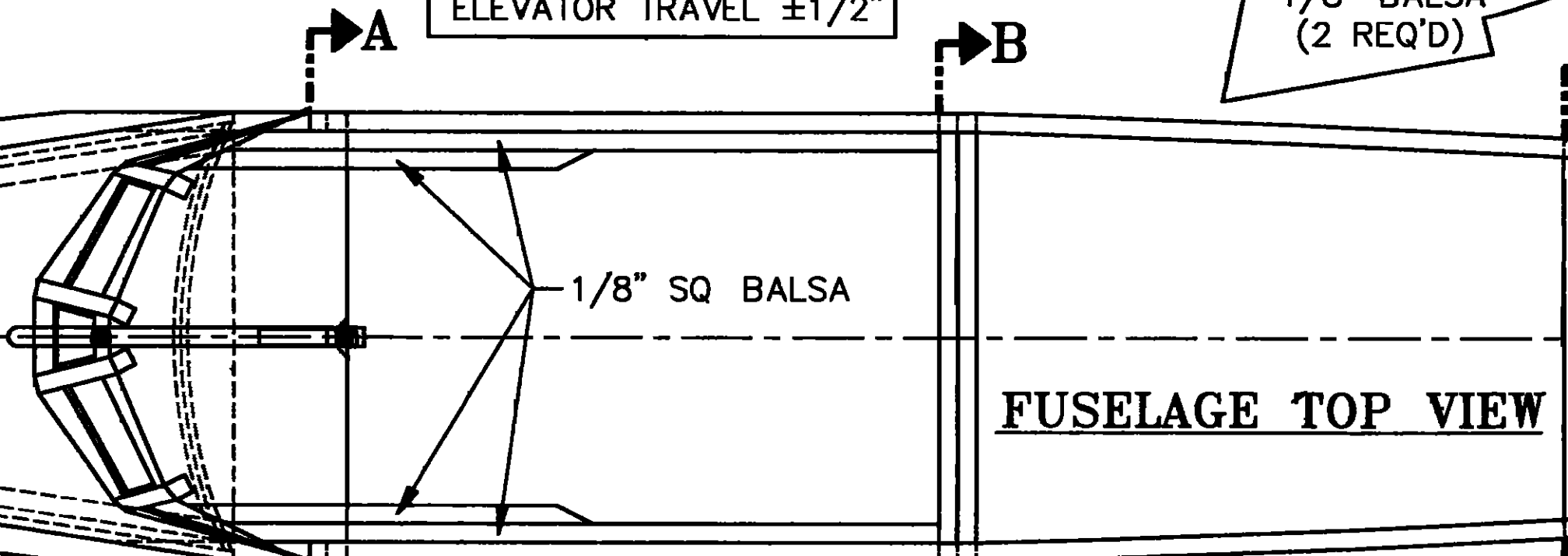
AXLE BOX

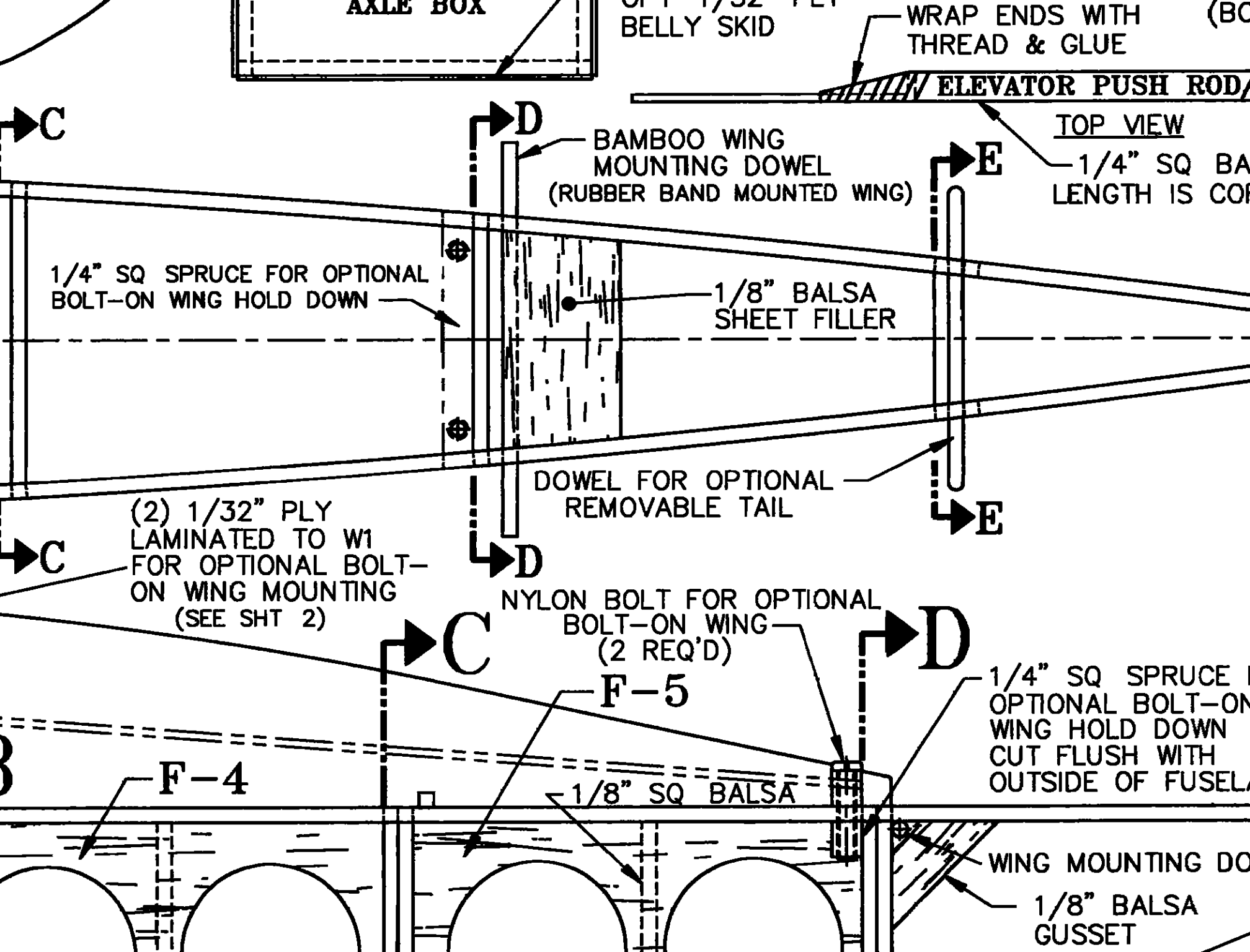
NOTE: MOUNT ENGINE AS HIGH AS POSSIBLE FOR GROUND CLEARANCE. USE A 1/8" LENGTH OF SILICONE TUBING AND A WASHER ON EACH MOTOR MOUNTING SCREW BETWEEN THE FIREWALL

TOP VIEW

RUDDER TRAVEL $\pm 1/2"$
ELEVATOR TRAVEL $\pm 1/2"$

R-1
1/8" Balsa
(2 REQ'D)





...OTH ENDS)

ATTACH TO CONTROL
HORNS WITH E/Z CONNECTORS

Balsa ADJUST LENGTH AS NECESSARY
CORRECT FOR SERVO POSITION ON PLANS

SECTION F-F

SECTION G-G

4 LAMINATIONS
OF 1/16" x 1/8"
BALSA STRIPS

1/8" SQ
BASS OR SPRUCE

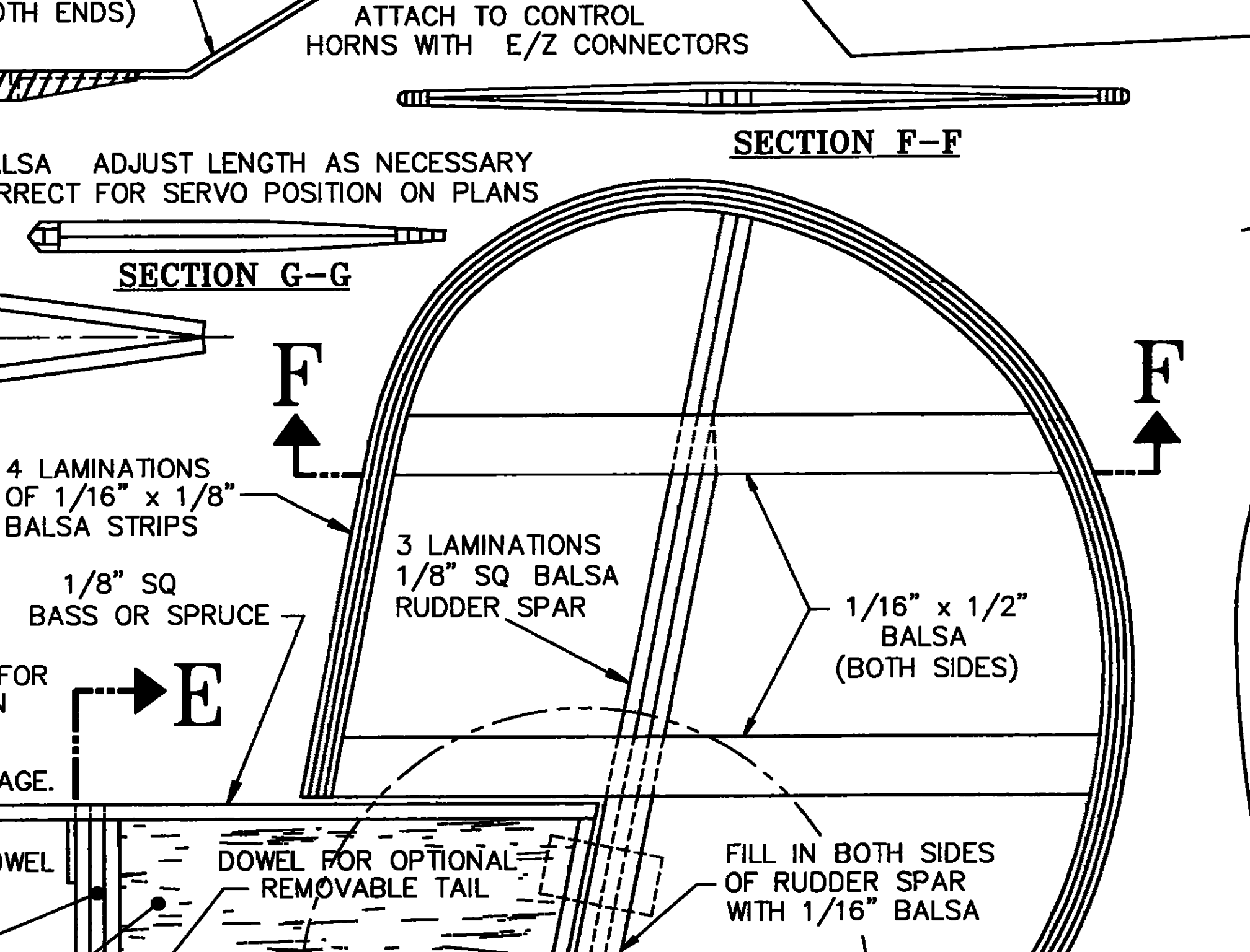
3 LAMINATIONS
1/8" SQ BALSA
RUDDER SPAR

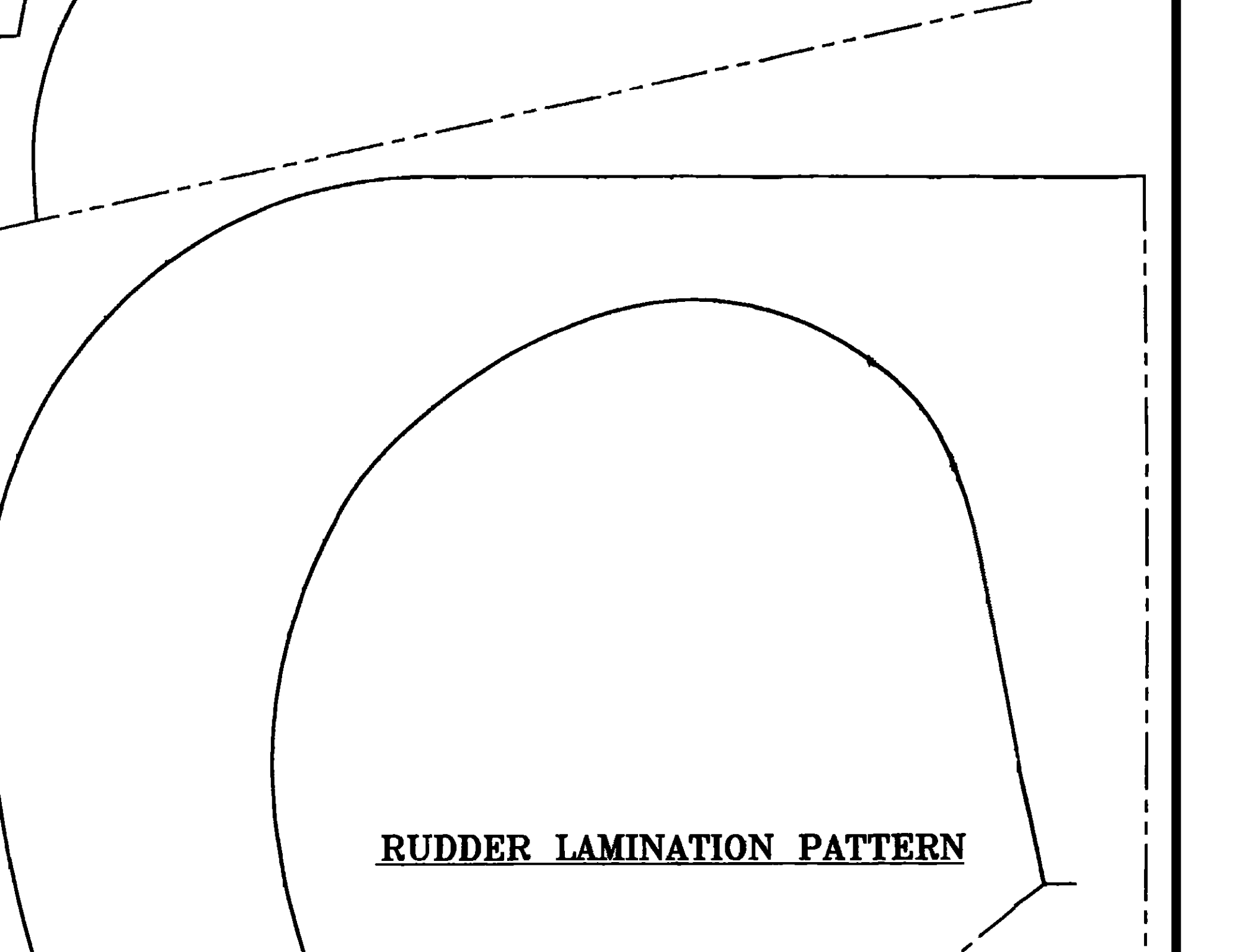
1/16" x 1/2"
BALSA
(BOTH SIDES)

FOR
AGE.

DOWEL FOR OPTIONAL
REMOVABLE TAIL

FILL IN BOTH SIDES
OF RUDDER SPAR
WITH 1/16" BALSA





RUDDER LAMINATION PATTERN

WITH EPOXY
(3 REQ'D)

SCREW BETWEEN THE FIREWALL AND
ENGINE MOUNT TO ALLOW FOR THE
ANGLE ADJUSTMENT.
(RIGHT & DOWN)

THROTTLE
(TO E)

1/16" Balsa SHEET

NOTE.
FUSELAGE FRONT SIDES SHOWN
AS PROJECTED VIEW PARTS DO
NOT EXACTLY MATCH THE PLANS

1/32" PLY
AXLE SLOT
(2 REQ'D)
(1 EACH SIDE)

FUEL TUBING OR
NYROD AXLE
SPACERS
(BOTH SIDES)

2 LAYERS OF
1/16" Balsa
(CROSS GRAIN)

AXLE IS AN 8 1/2" LENGTH
OF 3/32" MUSIC WIRE

F-1 -

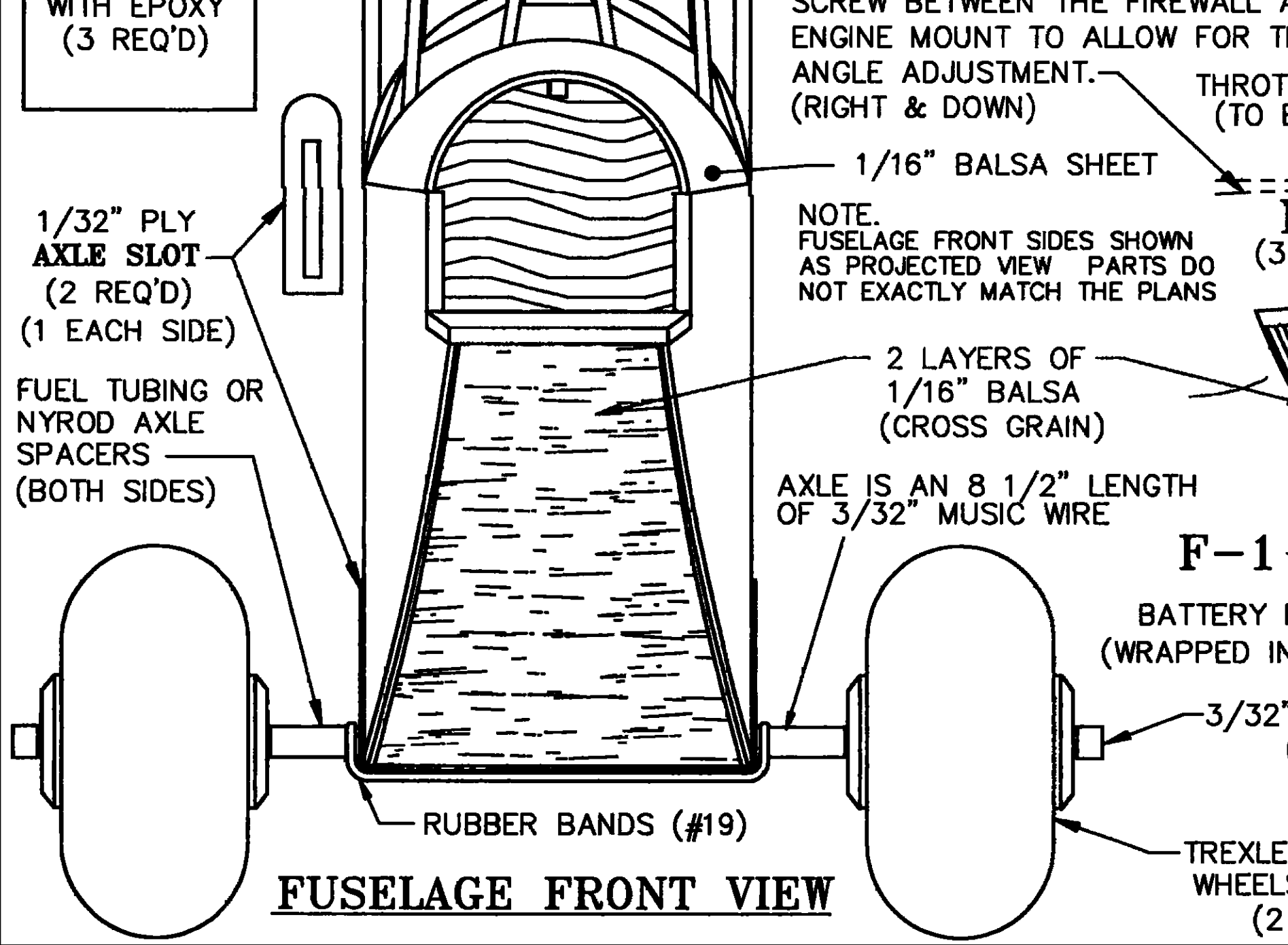
BATTERY P
(WRAPPED IN

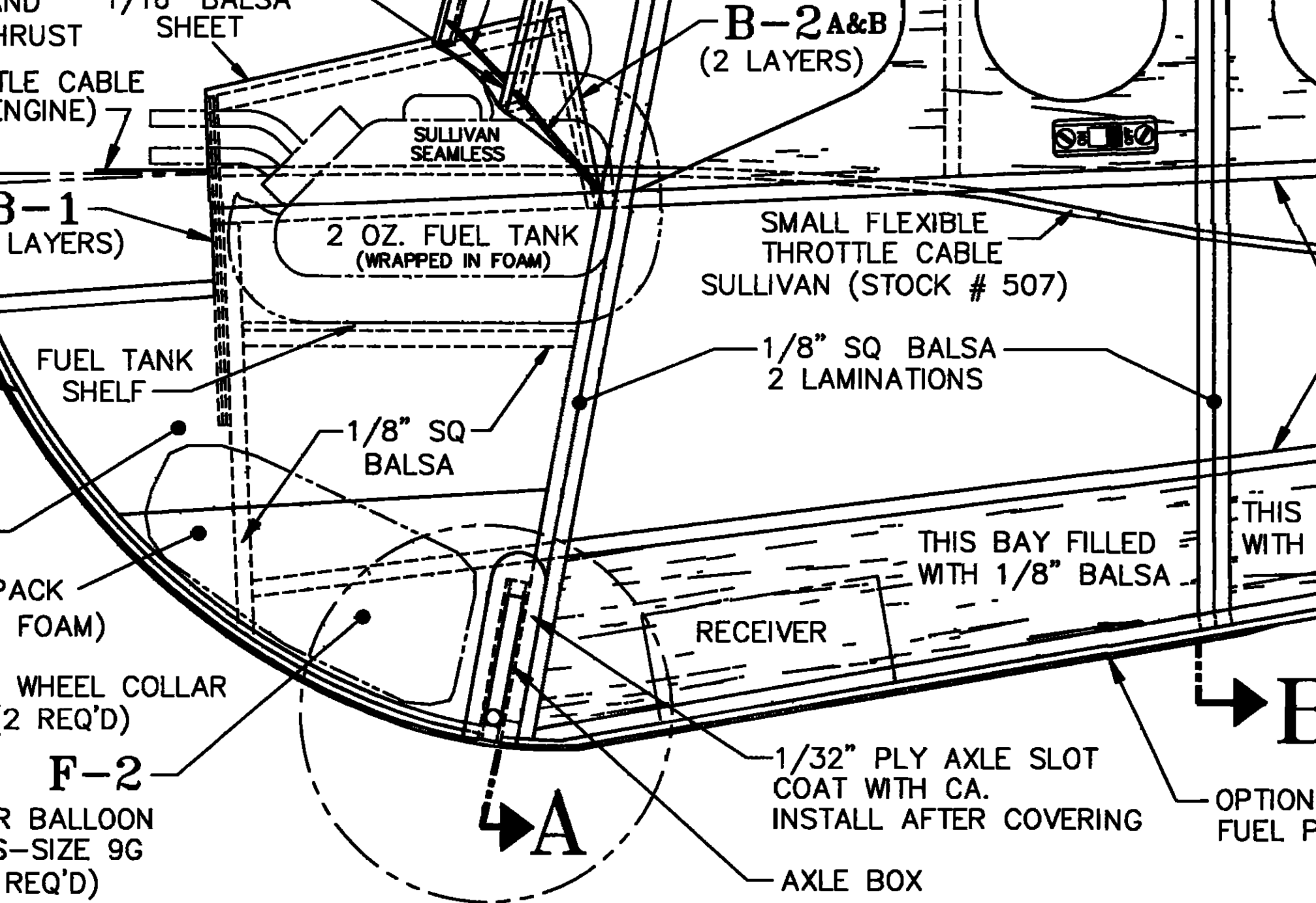
3/32"

RUBBER BANDS (#19)

TREXLER
WHEELS
(2

FUSELAGE FRONT VIEW





IND

THRUST

ENGINE CABLE (ENGINE)

B-1 (LAYERS)

FUEL TANK SHELF

PACK (FOAM)

WHEEL COLLAR (2 REQ'D)

F-2
R BALLOON
S-SIZE 9G
REQ'D)

SULLIVAN SEAMLESS

2 OZ. FUEL TANK (WRAPPED IN FOAM)

1/8" SQ Balsa

B-2A&B (2 LAYERS)

SMALL FLEXIBLE THROTTLE CABLE SULLIVAN (STOCK # 507)

1/8" SQ Balsa 2 LAMINATIONS

RECEIVER

1/32" PLY AXLE SLOT COAT WITH CA. INSTALL AFTER COVERING

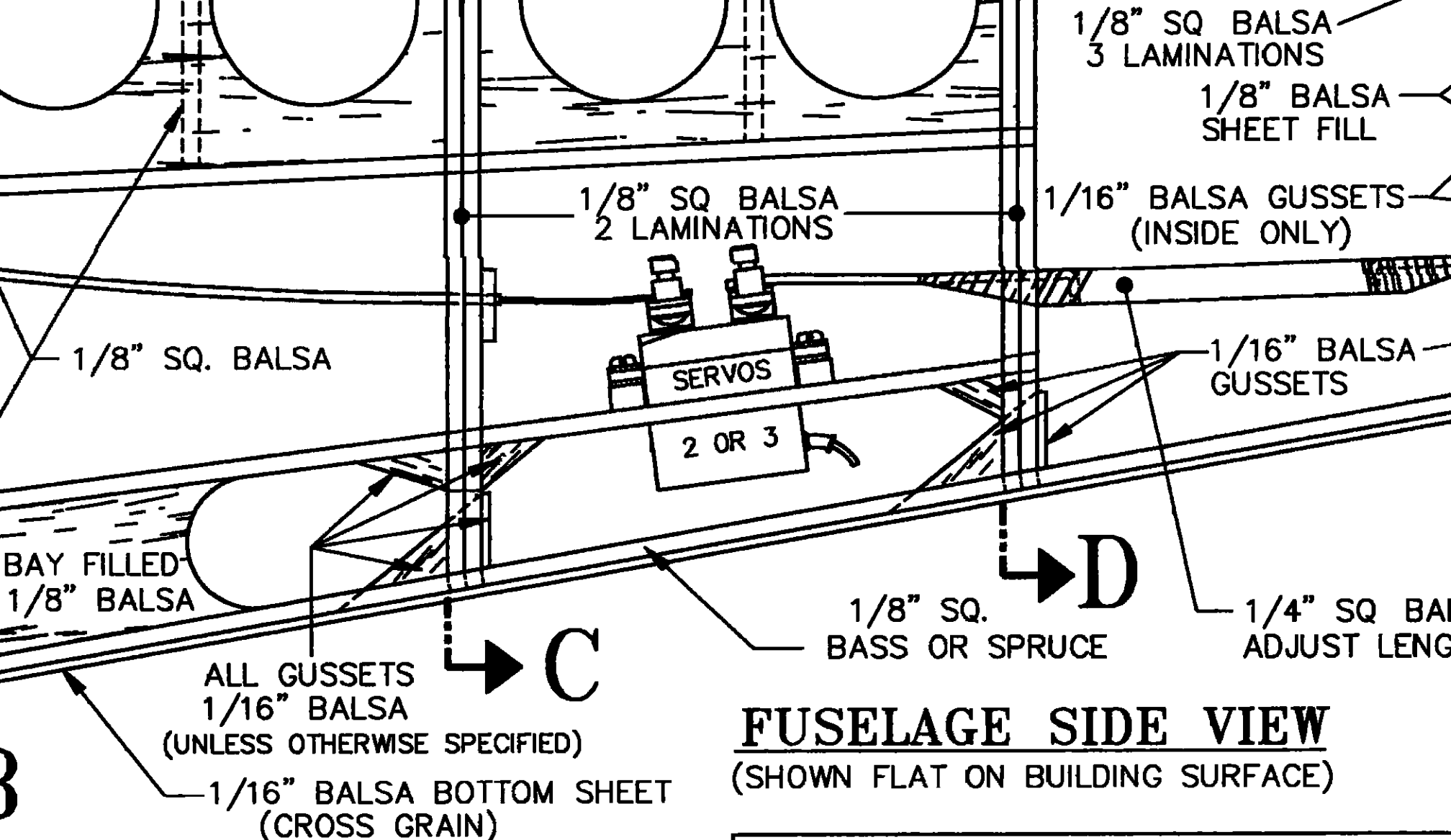
AXLE BOX

THIS BAY FILLED WITH 1/8" Balsa

OPTIONAL FUEL P

A

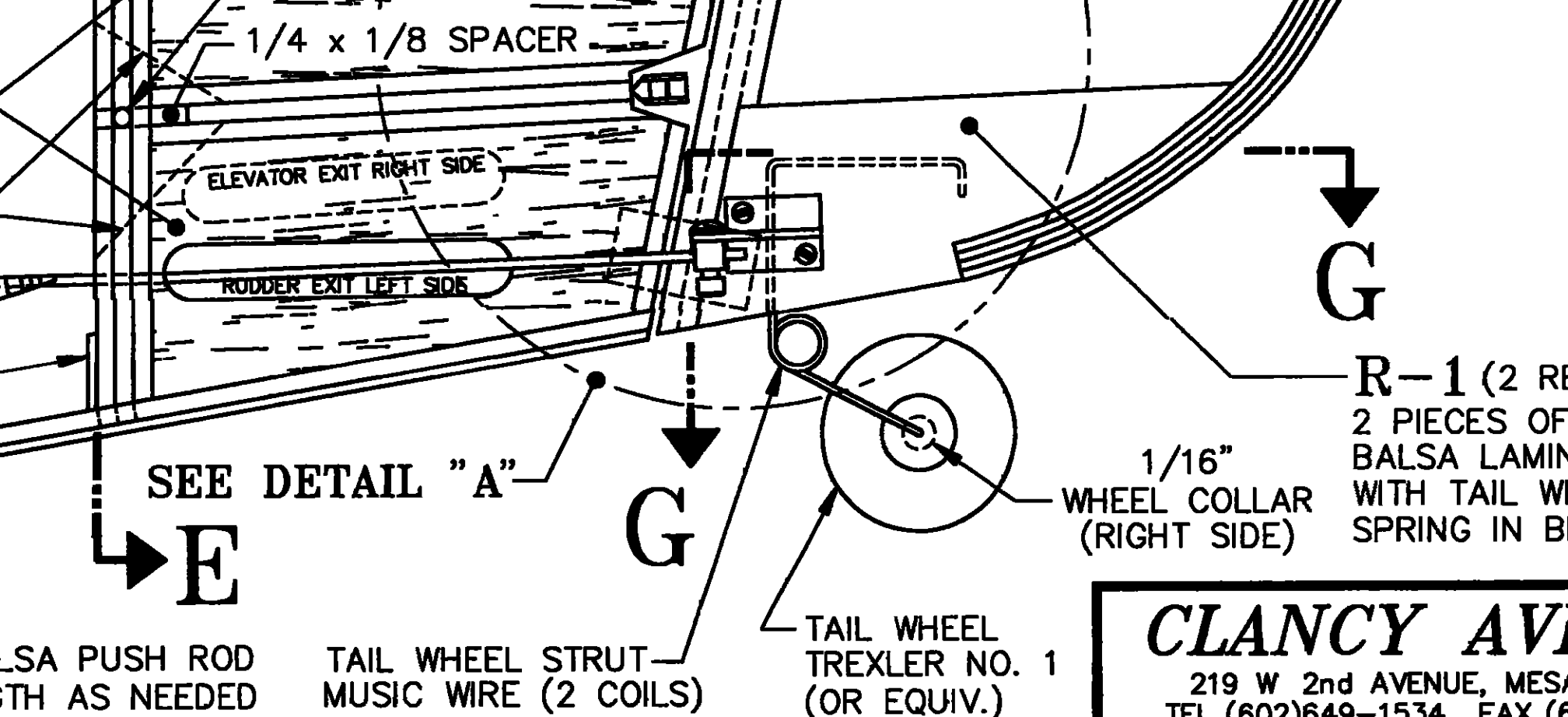
B



FUSELAGE SIDE VIEW
(SHOWN FLAT ON BUILDING SURFACE)

RADIO GEAR LOCATION.
POSITIONS OF RADIO GEAR SHOWN ARE
APPROXIMATE. REPOSITION AS NECESSARY
TO ACHIEVE PROPER BALANCE.

AL 1/32" PLY SHEETING FOR BELLY SKID
PROOF AND INSTALL AFTER COVERING



SEE DETAIL "A"
 E

G

G

1/16"
 WHEEL COLLAR
 (RIGHT SIDE)

R-1 (2 RE...
 2 PIECES OF
 Balsa LAMIN...
 WITH TAIL W...
 SPRING IN B...

Balsa PUSH ROD
 LENGTH AS NEEDED

TAIL WHEEL STRUT
 MUSIC WIRE (2 COILS)

TAIL WHEEL
 TREXLER NO. 1
 (OR EQUIV.)

NOTE ON COVERING:

DUE TO THE VERY LIGHT CONSTRUCTION OF THE LAZY BEE, I HIGHLY RECOMMEND USING LITESPAN COVERING WITH BALSALOC ADHESIVE. LITESPAN IS VERY LIGHT & EASY TO USE. LITESPAN & BALSALOC ARE AVAILABLE THROUGH CLANCY AVIATION, 219 W 2nd AVE, MESA, AZ., 85210-1317. PHONE (602) 649-1534. IF YOU CHOOSE TO IGNORE MY ADVICE AND USE MONOKOTE, BLACK BARON, ETC - USE EXTREME CAUTION WHILE SHRINKING COVERING TO AVOID WARPING. SILKSPAN & DOPE IS O.K. TO USE IF YOU ADD A FEW DROPS OF CASTOR OIL TO EACH BOTTLE OF DOPE TO KEEP IT FROM SHRINKING TOO MUCH.

CLANCY AVIATION

219 W 2nd AVENUE, MESA, AZ. 85210-1317
 TEL (602)649-1534 FAX (602)649-1534

LAZY BEE

049 TO 15 POWERED SMALL

DESIGNED BY ANDY CLANCY

CAD DRAWING (REV A) BY W

CAD DRAWING (REV B,C) BY-

SCALE FULL | REV C | SH

REQ'D)
1/8"
NATED
HEEL
ETWEEN



The diagram shows a curved lamination pattern for a wing tip. It consists of a solid outer curve, a dashed inner curve, and a dashed line extending from the inner curve towards the top right. A small notch is present at the bottom center of the curves.

WING TIP LAMINATION PATTERN

LAMINATION

PHOENIX, AZ. 85210
(602)649-9040

BEE

FIELD AIRPLANE

INC.

WILLIAM NICHOLS

CRAIG HAVLAND

PAGE 1 OF 3

COPYRIGHT © 1993, 1994, 1995
ALL RIGHTS RESERVED