

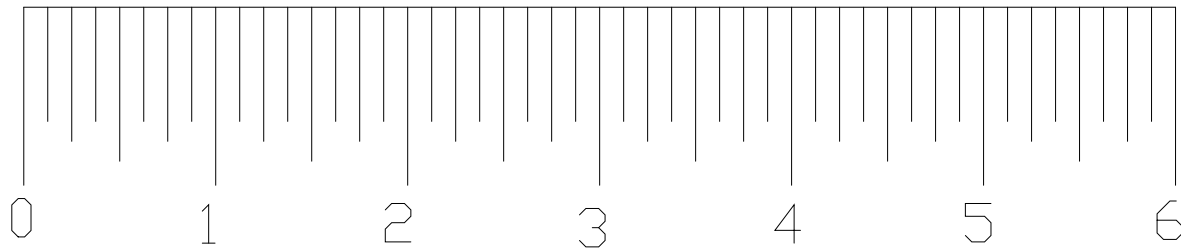
EzFly

MIDWESTFOAMPLANES.COM

DESIGN/CAD by Motorhead

01/05/2010

Scale



NOTES:

1. ALL CONSTRUCTION
FROM 9MM 1.3 LB EPP.

COMPONENTS:

2730-1500 KV MOTOR

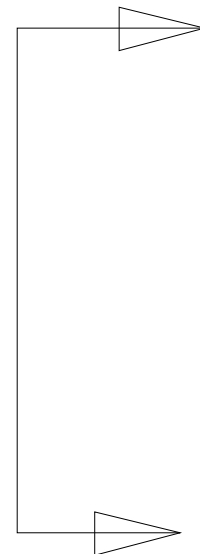
6X3 PROP

2 X 5 OZ SERVOS

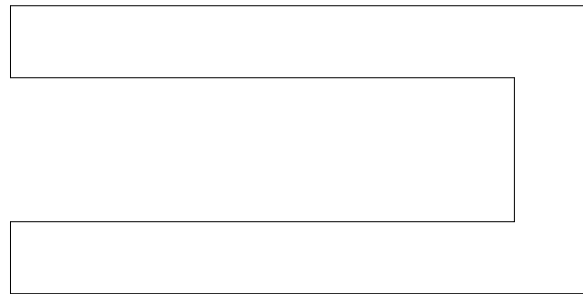
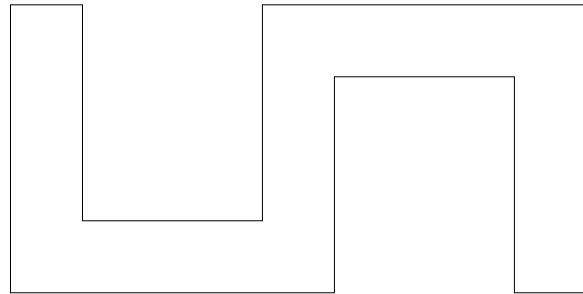
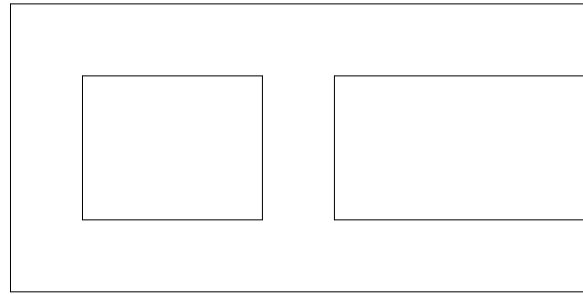
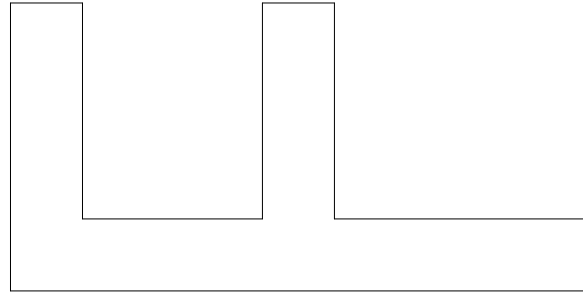
10 A SPEED CONTROL

3MM X 14" SPAR TUBE

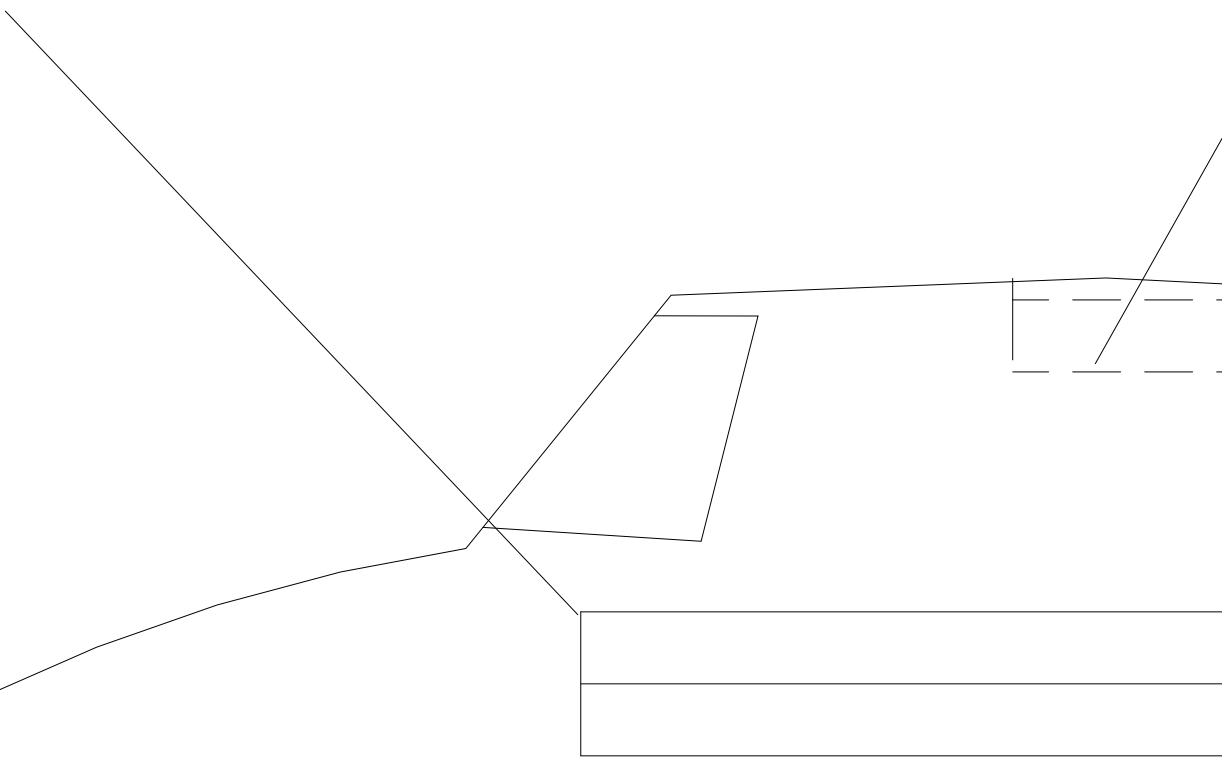
"A-A"



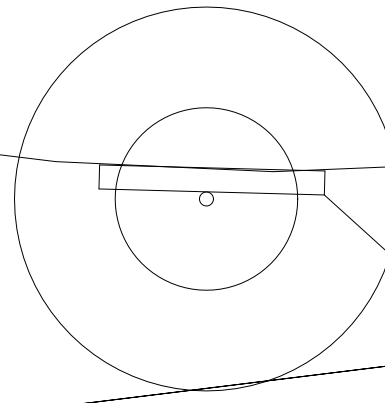
KF



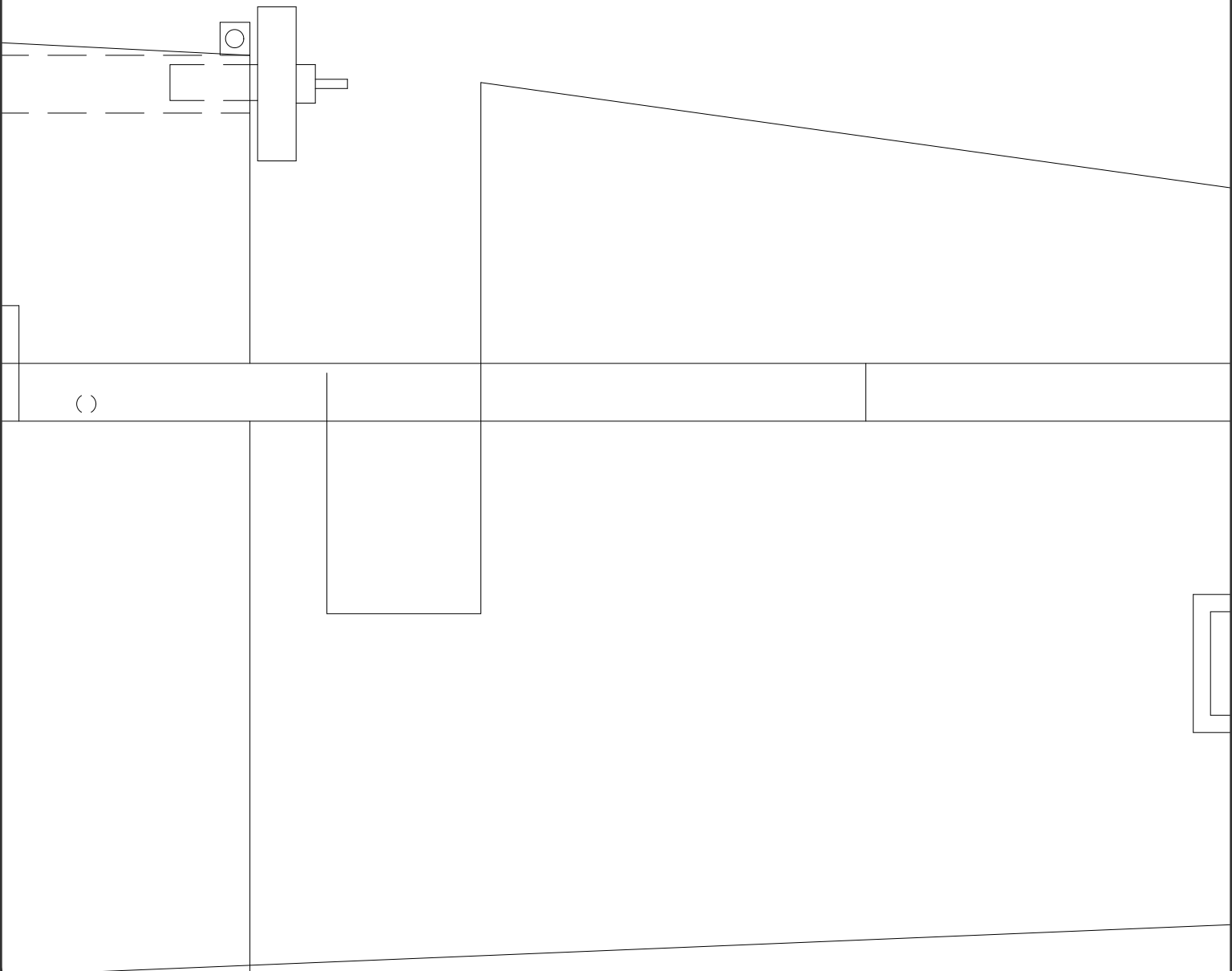
DOUBLER



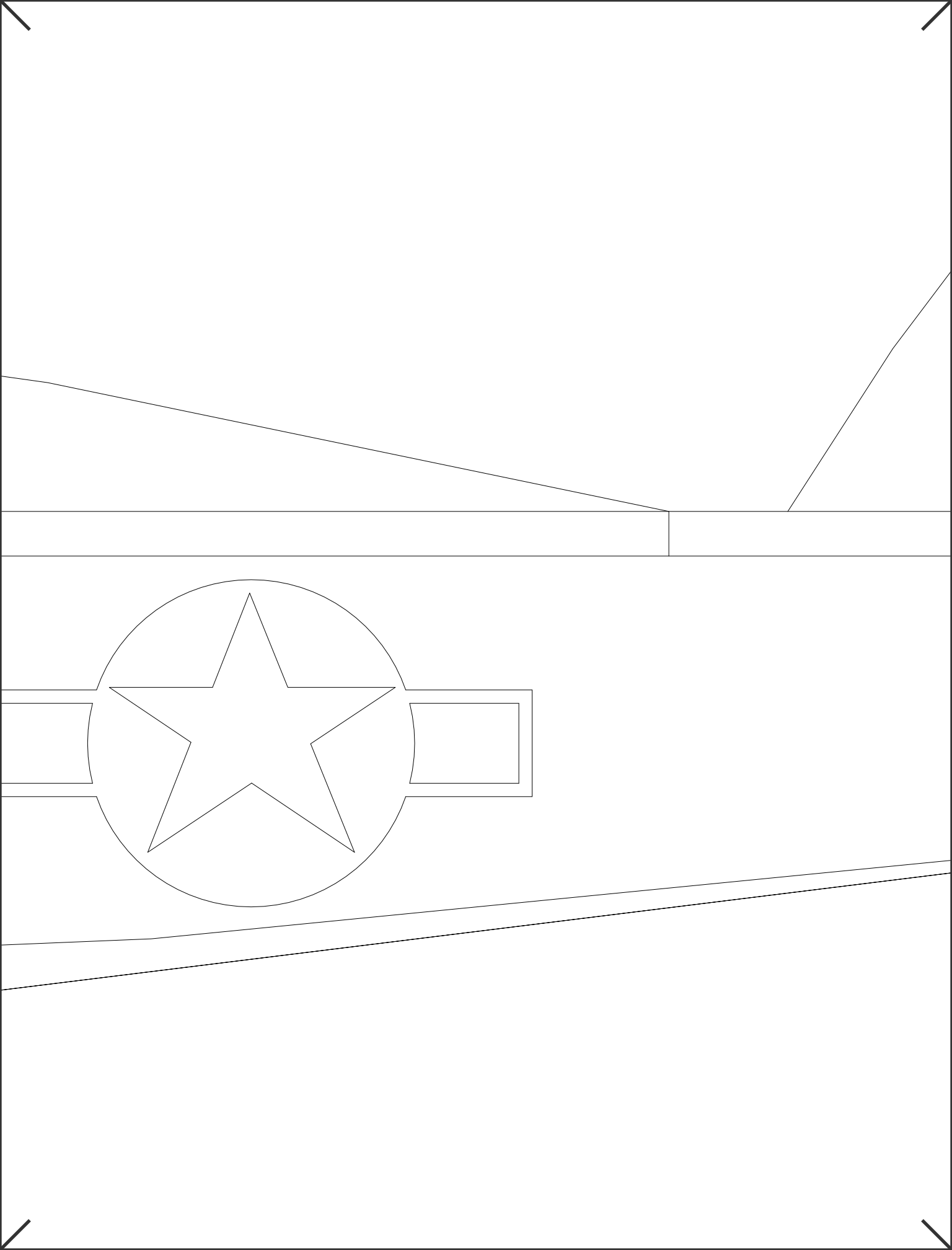
NOSE ART
GOES HERE

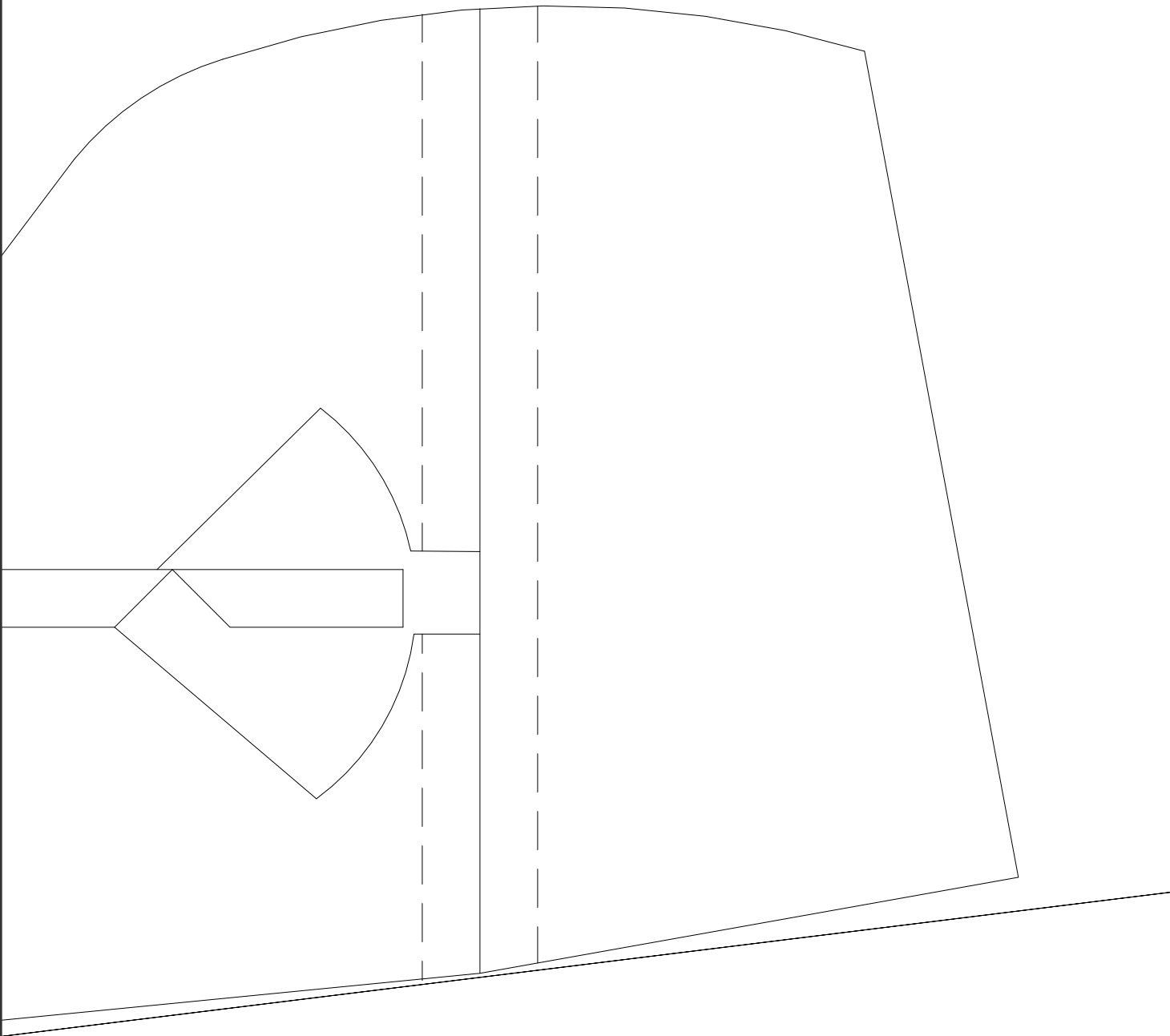


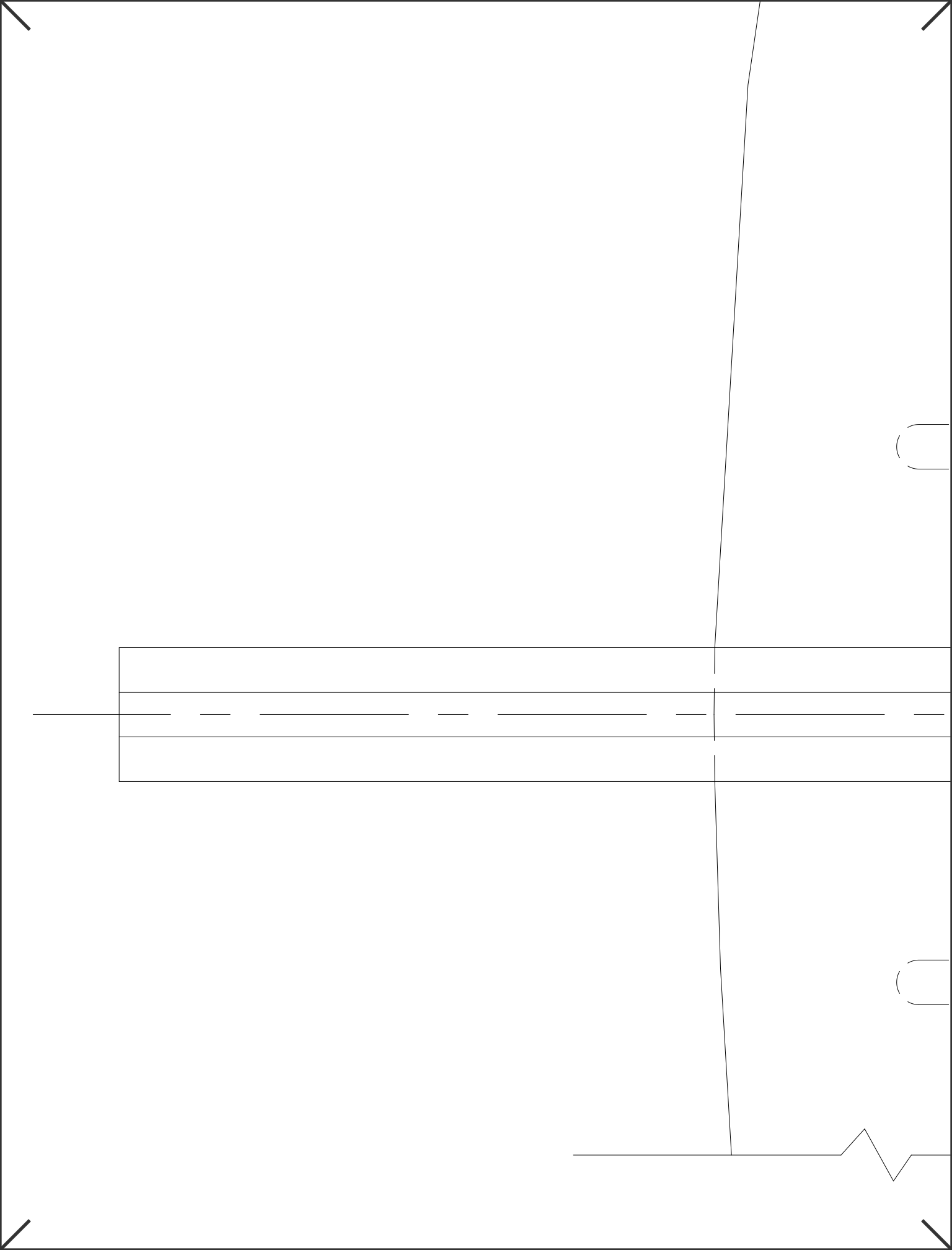
NOTCH FOR MOTOR STICK
IN CENTER PIECE ONLY

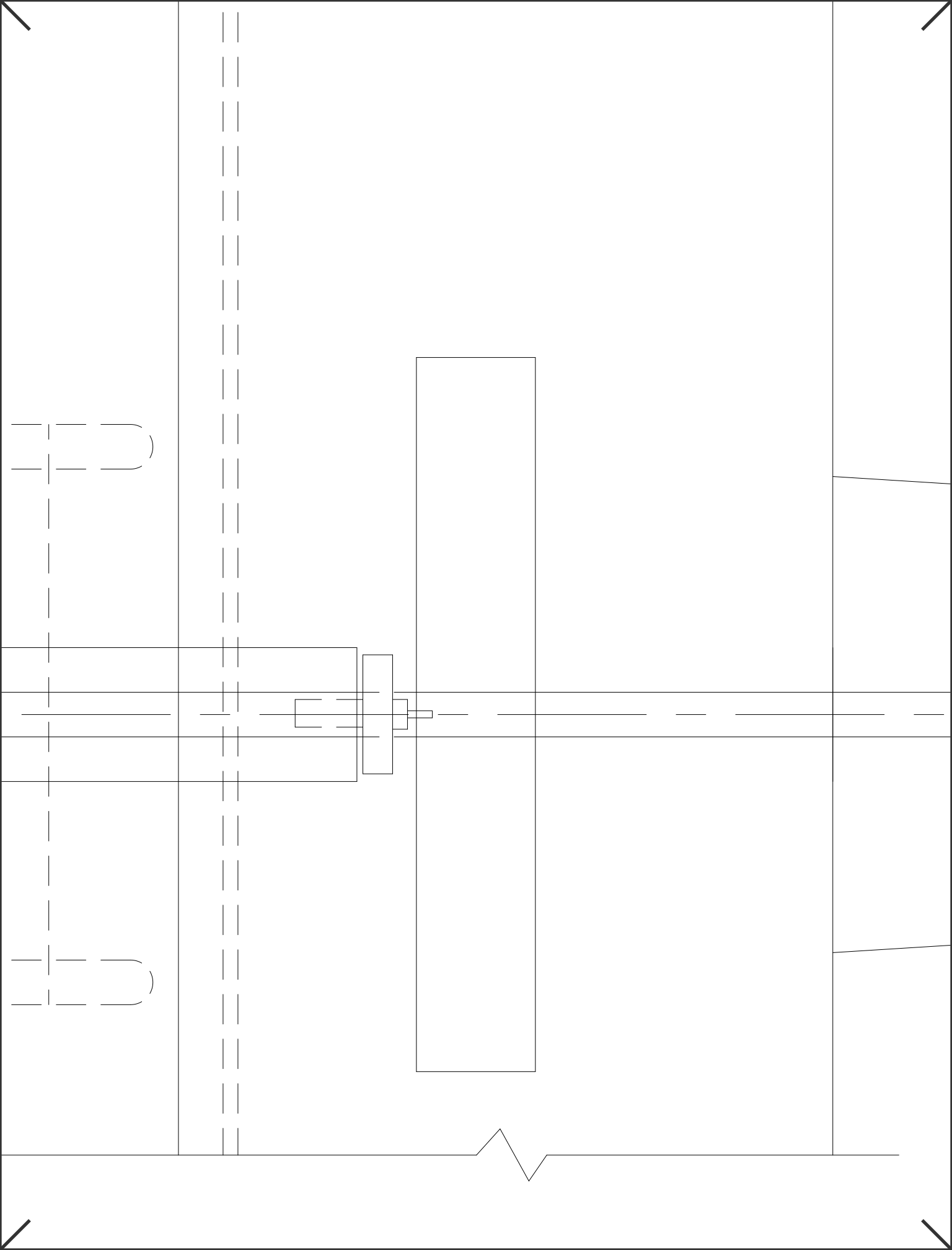


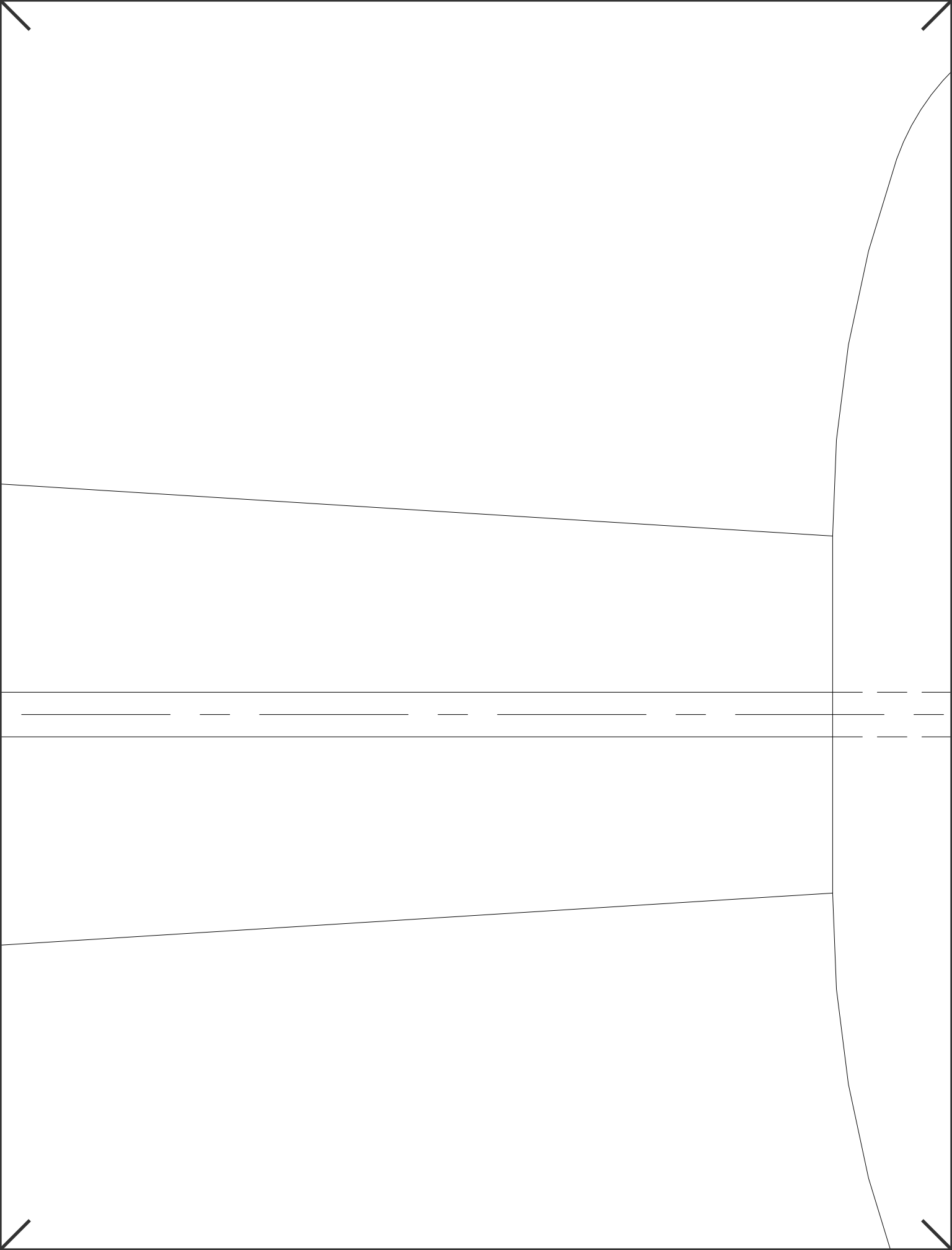
1/8" x 1-1/4" x 1-1/5"
PLYWOOD PLATE

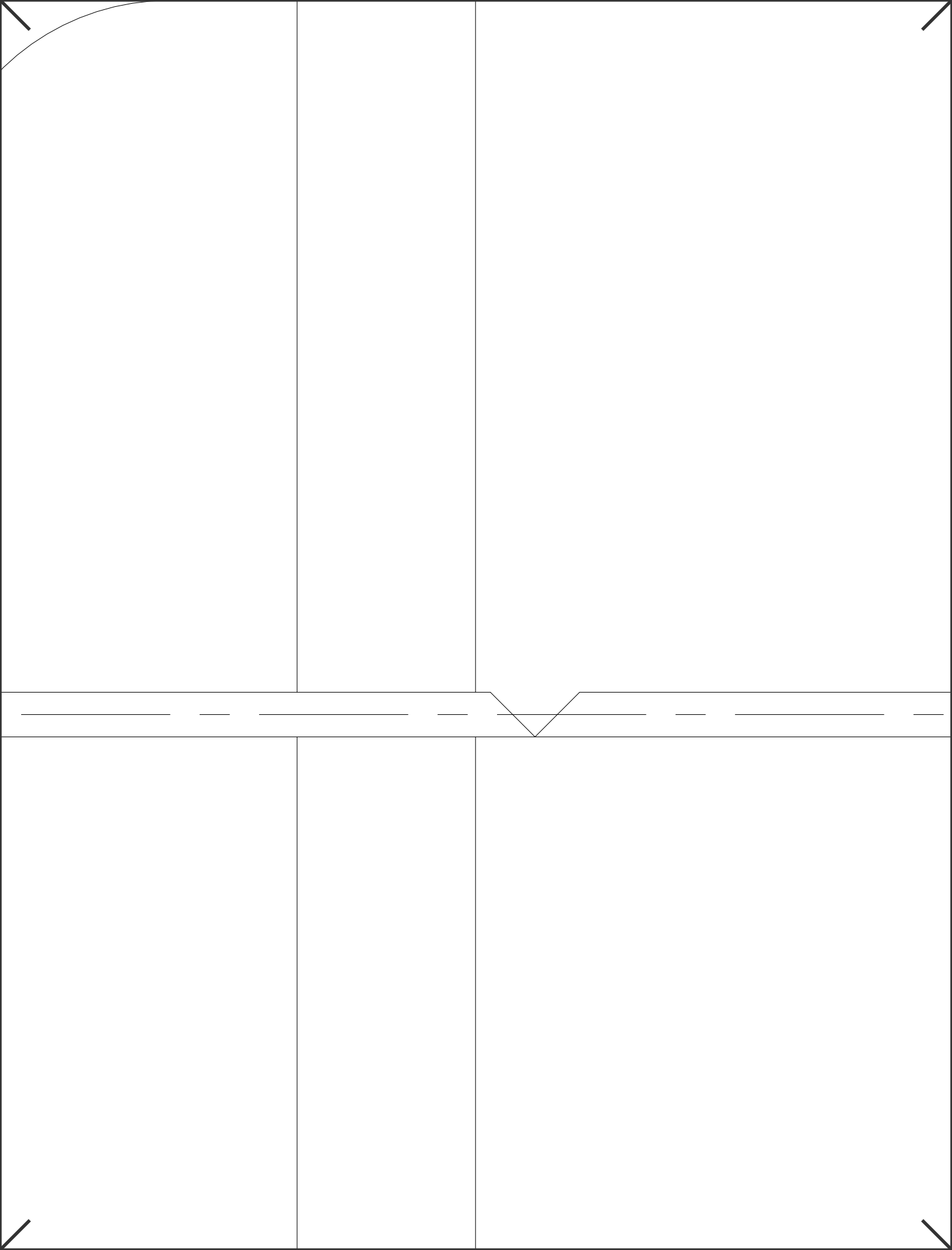




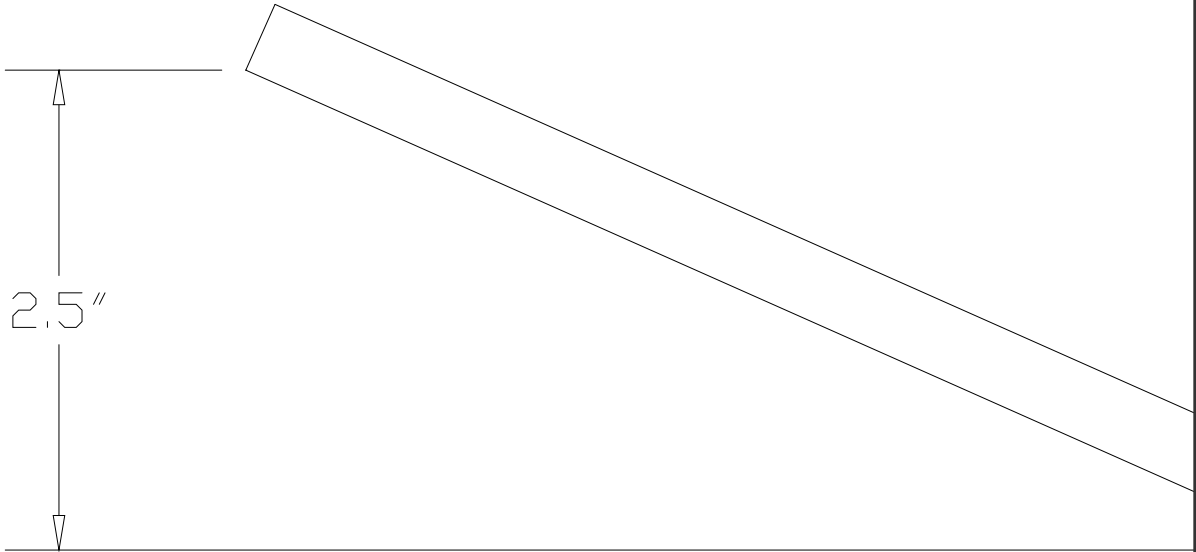








———— C/L

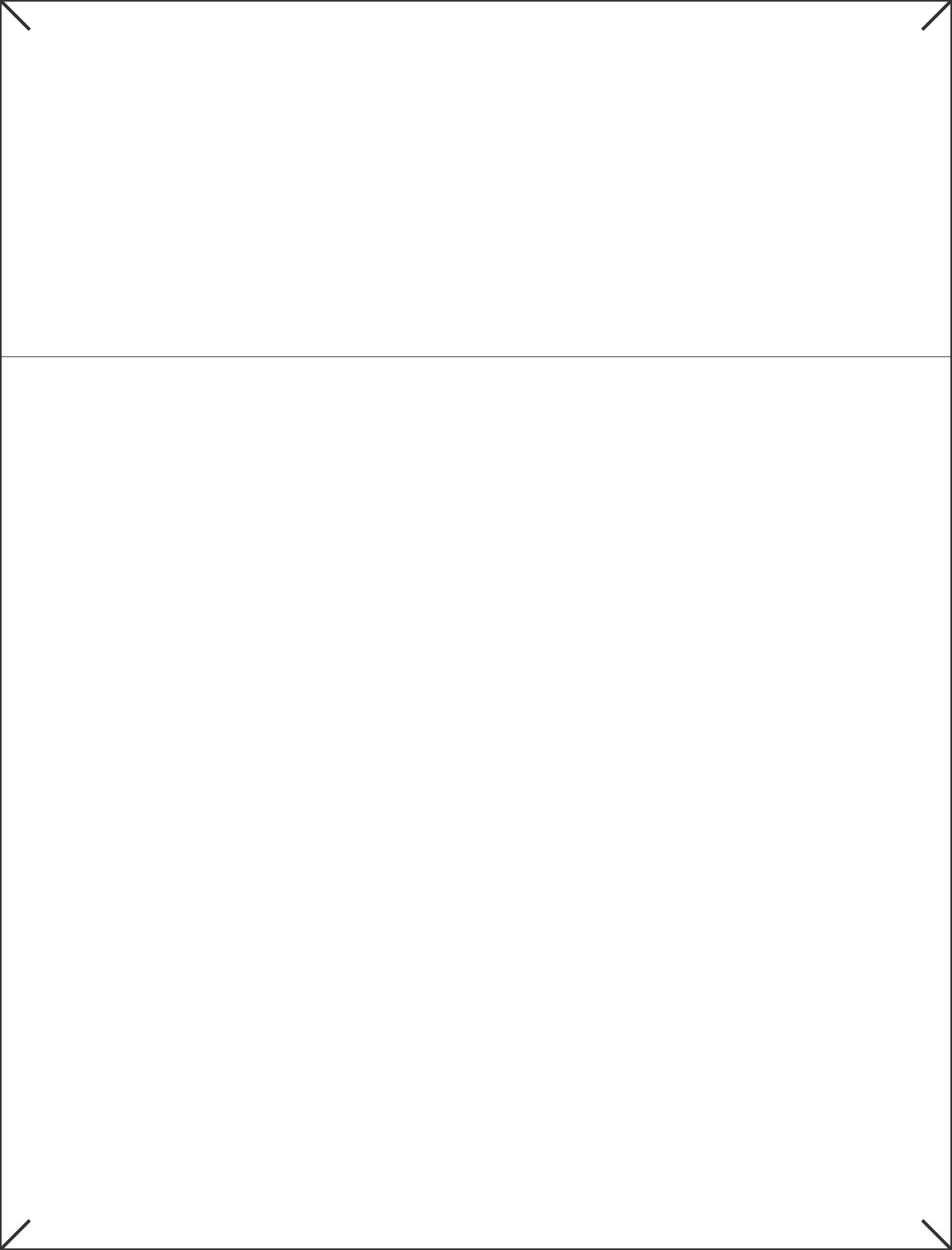


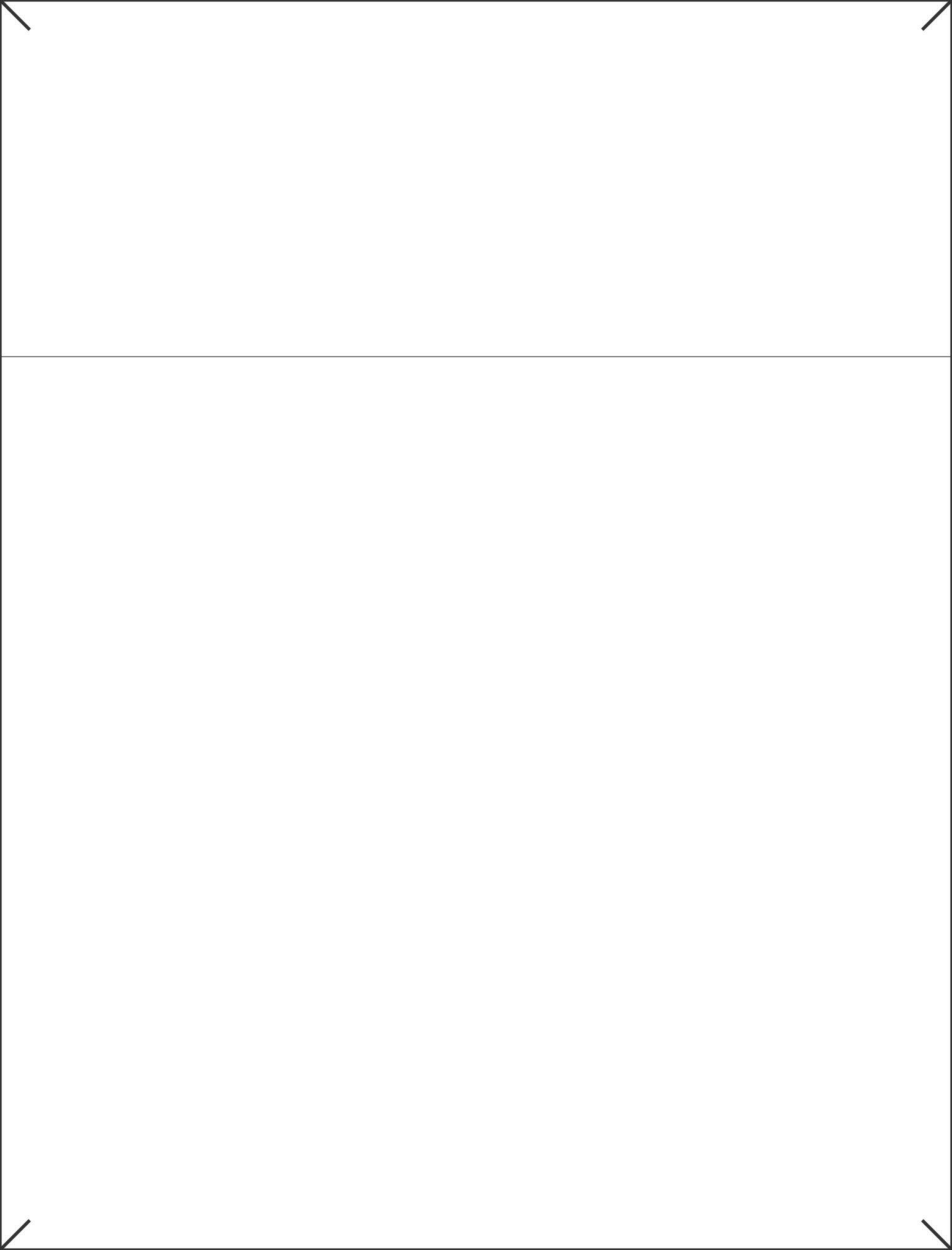
2.5"

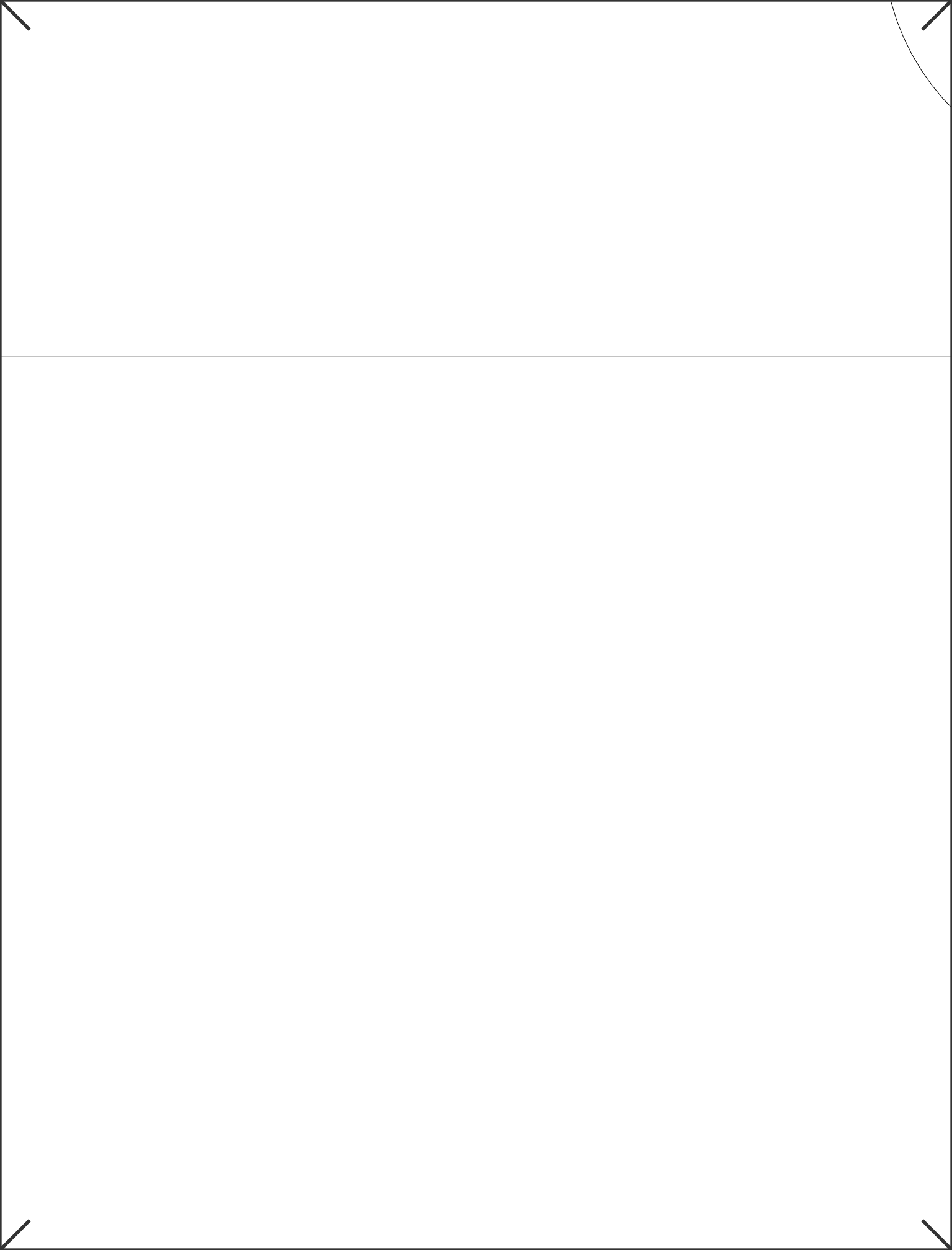


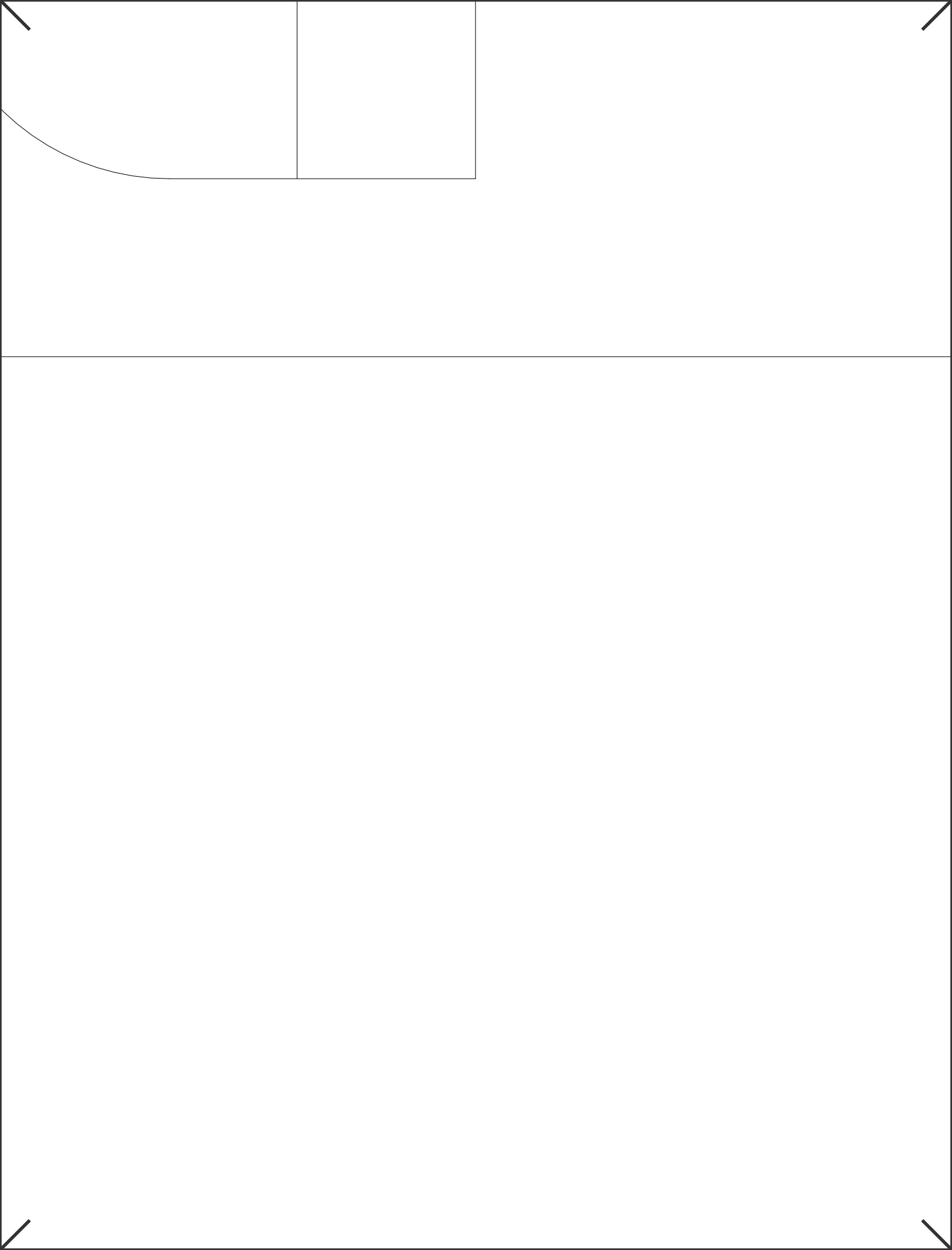
DREMSEL 1/8" WIDE X 1/4"
SLOT OR CUTOFF AND BEVEL

The diagram shows a cross-section of a rectangular object with a beveled edge on the left side. A slot is cut into the beveled surface, extending horizontally to the right. The slot is wider than it is deep. The bevel is a 45-degree angle. The text 'DREMSEL 1/8" WIDE X 1/4" SLOT OR CUTOFF AND BEVEL' is positioned above the slot, with a leader line pointing to the beveled edge.









SECTION

|| N // A - A //