

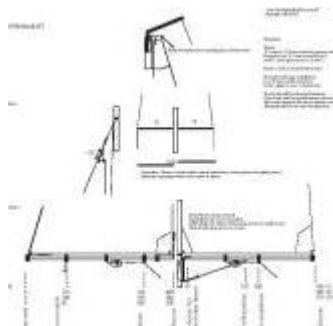
If you do not require mast with this Rig Kit, Subtract \$45

Just write upgrades or exclusions in message box when ordering rig kits, and we will send you an invoice or refund for the difference.

BUY EXTRA: RP16d - IOM Rigging Plan and Instructions US\$8.26

RP16d - IOM Rigging Plan and Instructions

Shows the current SAILSetc rigging pack components in assembled form and contains all the information you need to assemble these parts. Both lightweight and SAILSetc type headsail booms are shown as well as various adaptations for non-standard items, hints and tips etc. Suitable also for other small classes



Rig Kits come complete with:

Mast Groovy 11.1 mm x 1900mm US\$49.79

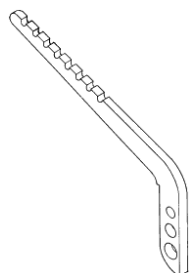
Mast - 11.1mm Alloy Groovy SAILSetc.Natural Anodised (0.5mm wall) 2 metre long
Suitable for A Rig - IOM

Use No 15 Gooseneck/Vang with this mast



22-040 Backstay Crane US\$6.62

20 to 40mm Stainless Steel, adjustable length,
fits 23-110 & 23-127 Head Fittings. For IOM and other



Mast Head Fitting 23-110 US\$2.91

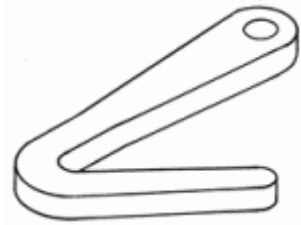
Will take Back Stay Cranes 22-040, 22-045, 22-055, 22-065 etc.

BUY EXTRA: This fitting is also ideal to use as a heel fitting at base of mast **US\$2.91**

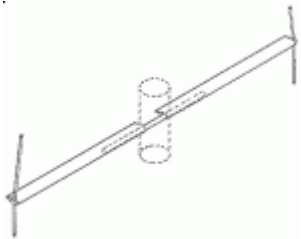


S/S Hook 87g US\$2.12

87g Hook Small Stainless Steel Laser Cut 15 x 7 mm



Spreader Kit 21-075; Aerofoil 2 x 75mm long for IOM US\$12.71



S/S Rigging Wire US\$?

2 x 30-030 Rigging Screw - Single End for IOM/RM/10R etc. US\$6.04

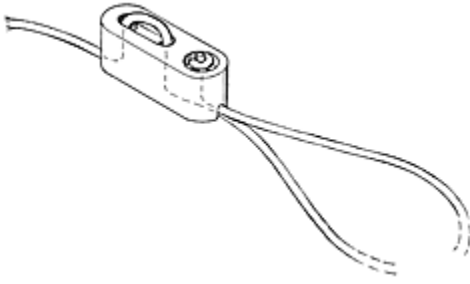
This Rigging Screw is mainly used for all IOM Rigs and similar sized classes, to attach sidestays to deck eyes - It has a 3mm thread - It can be used for Marbleheads and 10 Raters etc. but generally the 30-035 is used for these larger classes.



100-15 Budget Counterweight - Lead - 15grams US\$5.24



6 x Small Bowsies 57c - Bowsie - Pack Of 10 small - 12 x 3 mm US\$5.83



2 x M2 S/S Nuts **US\$?**

BUY EXTRA: 51-12 Luff Ring for use with 11mm to 12 mm Mast **US\$1.17**



Main Boom Kit 160-KIT US\$27.54

Main Boom Kit - IOM - 346mm long SAILSetc. Boom Section - Kit contains components shown.
For Downloadable Drawing of Rigging Plan, click on web link below.

Includes: 346mm Boom section

'O' ring

Moulded plastic boom end piece 103g

Boom track slide & clew hook 104a

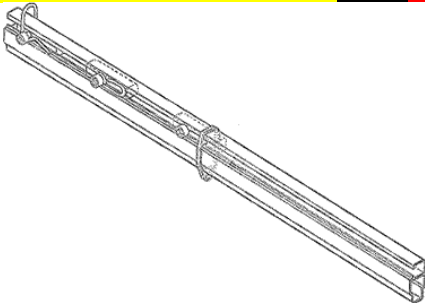
Sheet attachment, adjustable 104e

Sheet adjustment hanger 104d

Allan key to suit track slides

Fitting Instructions

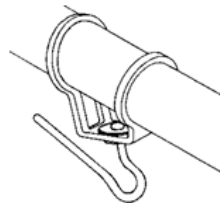
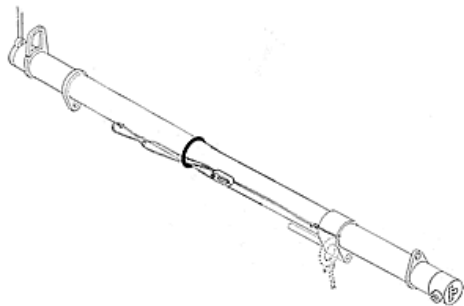
BUY EXTRA: Can be ordered with extra slide and hook 104e and O ring for attaching mainsail luff tension - **Add \$4 00**



Jib Boom Kit - Lightweight 161-KIT US\$33.90

161-Kit Jib Boom Kit - for IOM - 400mm long - Super Light Boom Kit for A Rig - 10mm Round Section - Kit contains components shown, excluding Boom Band with Pin 46-100 @

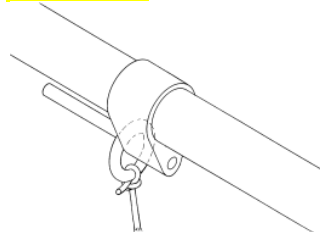
\$3.70, and 46b (small metal ring for string attachment) @ **\$3.50** but for boats with wire hoops on foredeck an 87b wire hook is supplied, alternatively you may wish to order a 120-100 Ball Raced Swivel Jib Boom Attachment. For this part go to **"MAST BOOM & RIGGING PARTS"**



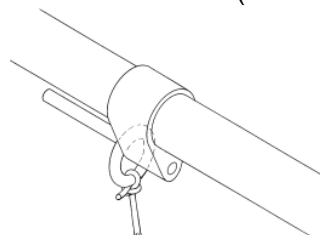
120-100 Jib Swivel with Ball Race Adjustable for Round 10mm dia. Boom

US\$25.95

BUY EXTRA:



46-100 Boom Band with Pin - Fits 10mm dia. Round Tube. Used in conjunction with 46b as Jib swivel (does not include ring 46b **BUY EXTRA: US\$ 3.92**



46b - Stainless Steel Ring (boom band with pin not included - see next items) Used in conjunction with 46-080 to 46-140 as Jib swivel **BUY EXTRA: US\$3.71**

Gooseneck No 15 US\$34.43



Various Cord US\$?

Drawings and Instructions. Rigging Wire. (either 7 strand 0.6mm or single round wire 0.55mm)

To upgrade/customise your Rig Kit, email us with your requirements.

Upgrade to 11c Ballraced Gooseneck add \$57

Ball Raced Jib Boom Swivel 120-100 Add \$24.5

Flat Wire Add \$4

If you do not require mast with this Rig Kit, Subtract \$45

Just write upgades or exclusions in message box when ordering rig kits, and we will send you an invoice or refund for the difference.