

THE KID

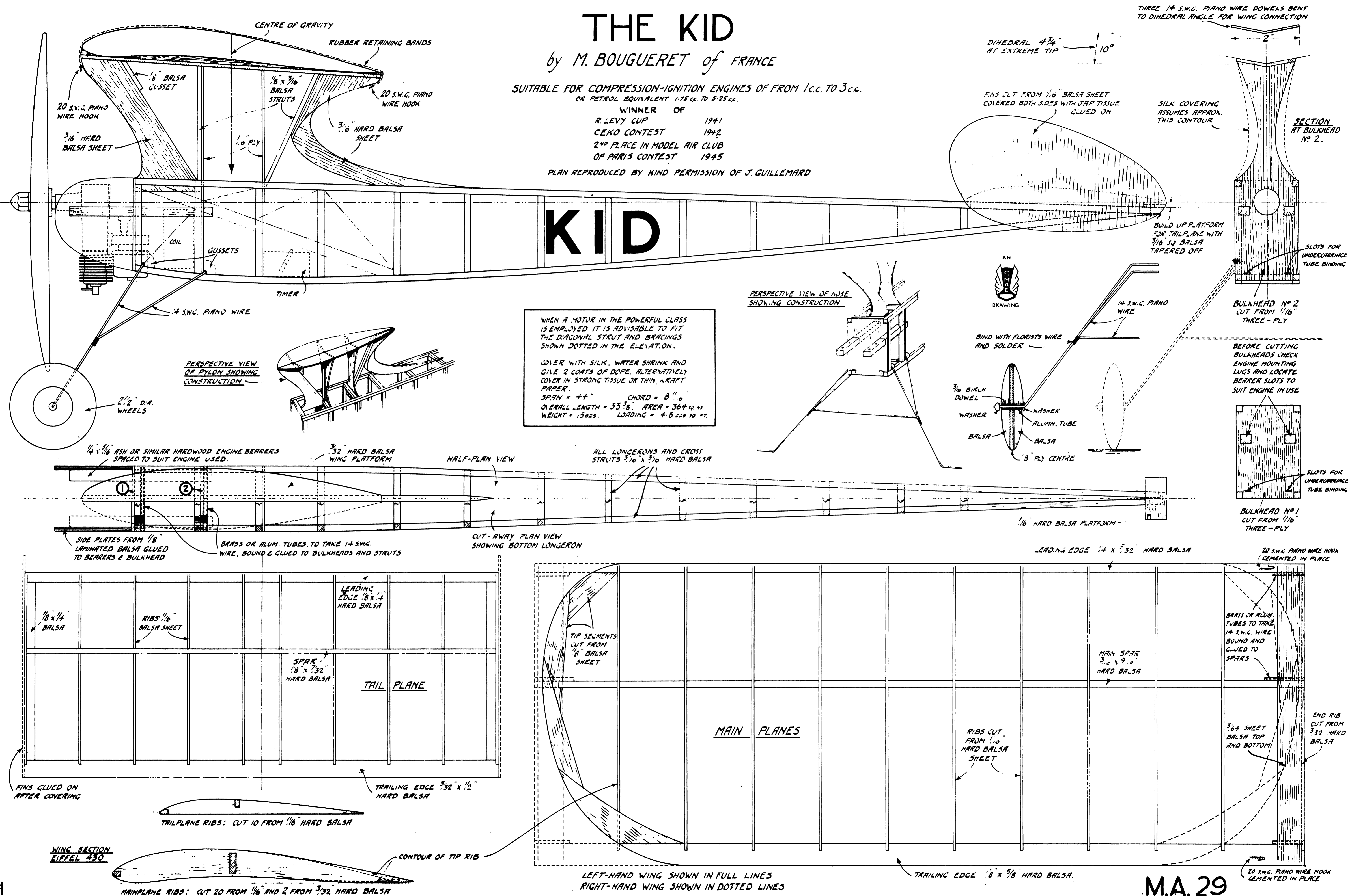
by M. BOUGUERET of FRANCE

SUITABLE FOR COMPRESSION-IGNITION ENGINES OF FROM 1cc. TO 3cc.
OR PETROL EQUIVALENT 1.75 cc. TO 5.25 cc.

WINNER OF
R. LEVY CUP 1941
CEKO CONTEST 1942
2ND PLACE IN MODEL AIR CLUB
OF PARIS CONTEST 1945

PLAN REPRODUCED BY KIND PERMISSION OF J. GUILLEMARD

KID



WHEN A MOTOR IN THE POWERFUL CLASS IS EMPLOYED IT IS ADVISABLE TO FIT THE DIAGONAL STRUT AND BRACINGS SHOWN DOTTED IN THE ELEVATION.

COVER WITH SILK, WATER SHRINK AND GIVE 2 COATS OF DOPE. ALTERNATIVELY COVER IN STRONG TISSUE OR THIN KRAFT PAPER.

SPAN = 44" CHORD = 8 1/2"
OVERALL LENGTH = 35 3/8" AREA = 364 sq. in.
WEIGHT = 15.025. LOADING = 4.6225 sq. ft.

THREE 14 S.W.G. PIANO WIRE DOWELS BENT TO DIHEDRAL ANGLE FOR WING CONNECTION

DIHEDRAL 4 3/4" AT EXTREME TIP 10°

FINS CUT FROM 1/16 Balsa SHEET COVERED BOTH SIDES WITH JAP TISSUE GLUED ON

SILK COVERING ASSUMES APPROX. THIS CONTOUR

SECTION AT BULKHEAD No 2.

BUILD UP PLATFORM FOR TAIL PLANE WITH 3/16 S3 Balsa TAPERED OFF

SLOTS FOR UNDERCARRIAGE TUBE BINDING

PERSPECTIVE VIEW OF NOSE SHOWING CONSTRUCTION

AN DRAWING

BIND WITH FLORISTS WIRE AND SOLDER

3/16 BIRCH DOWEL
WASHER
Balsa
WASHER
ALUM. TUBE
Balsa
3" PLY CENTRE

BEFORE CUTTING BULKHEADS CHECK ENGINE MOUNTING LUGS AND LOCATE BEARER SLOTS TO SUIT ENGINE IN USE

BULKHEAD No 2 CUT FROM 1/16" THREE-PLY

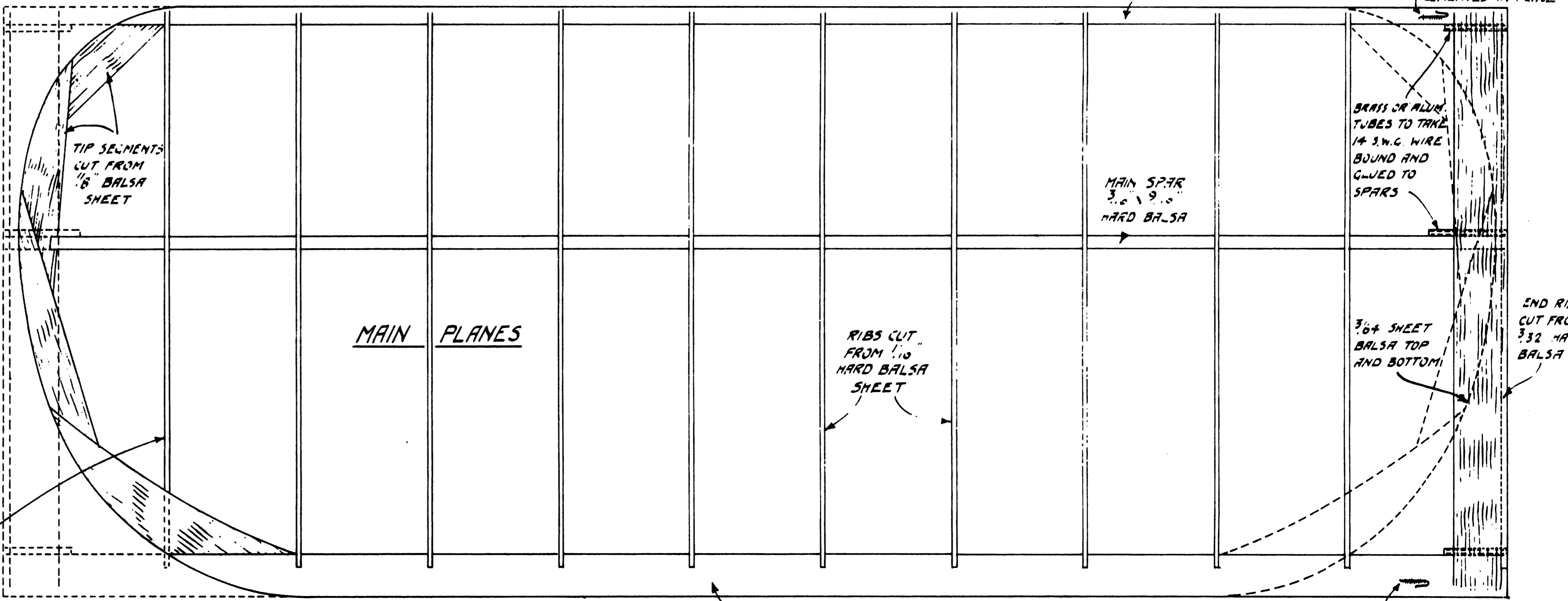
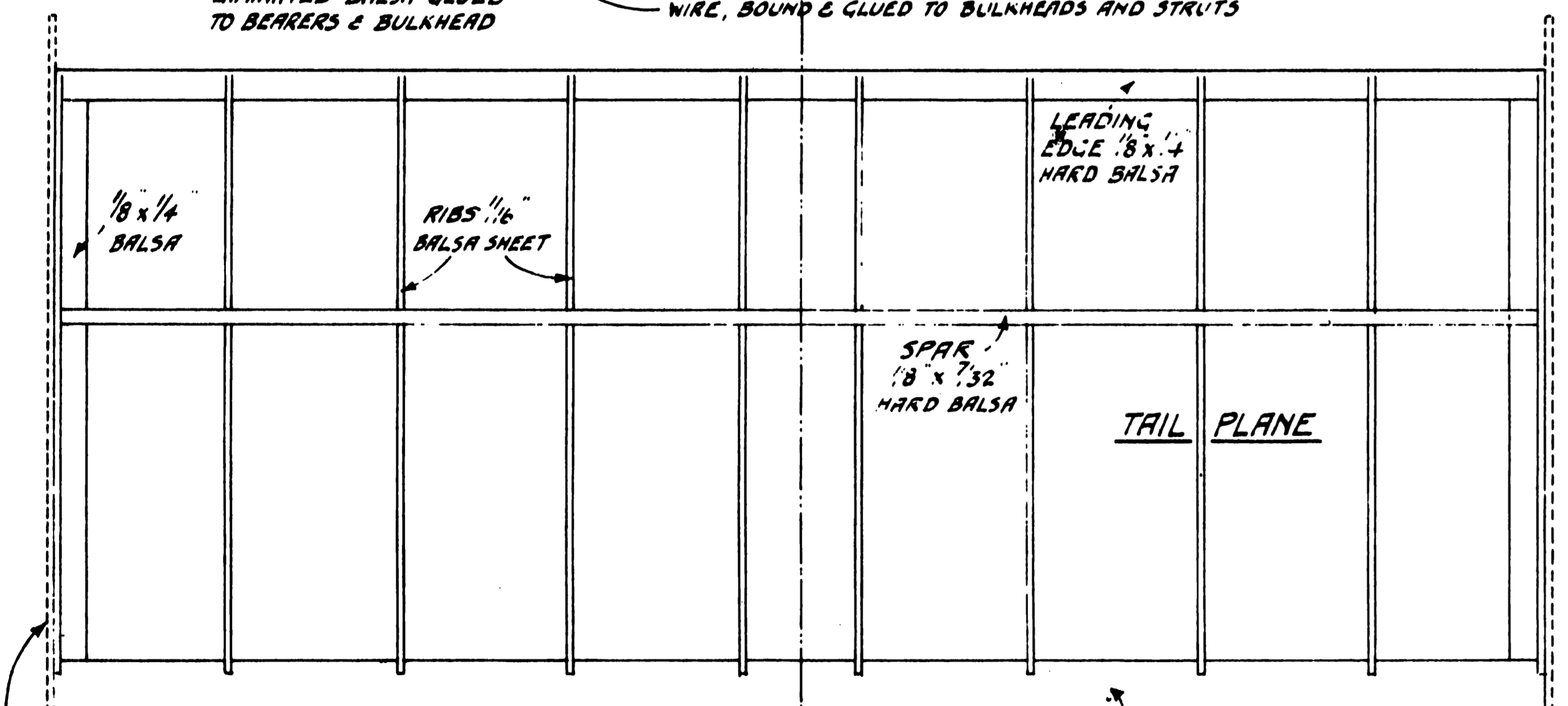
SLOTS FOR UNDERCARRIAGE TUBE BINDING

BULKHEAD No 1 CUT FROM 1/16" THREE-PLY

1/16" HARD Balsa PLATFORM

LEADING EDGE 14 x 3/32 HARD Balsa

20 S.W.G. PIANO WIRE HOOK CEMENTED IN PLACE



WING SECTION RIFFEL 430

TAILPLANE RIBS: CUT 10 FROM 1/16 HARD Balsa

TRAILING EDGE 3/32 x 1/2 HARD Balsa

MAINPLANE RIBS: CUT 20 FROM 1/16 AND 2 FROM 3/32 HARD Balsa

CONTOUR OF TIP RIB

LEFT-HAND WING SHOWN IN FULL LINES
RIGHT-HAND WING SHOWN IN DOTTED LINES

TRAILING EDGE 1/8 x 3/8 HARD Balsa.

M.A. 29