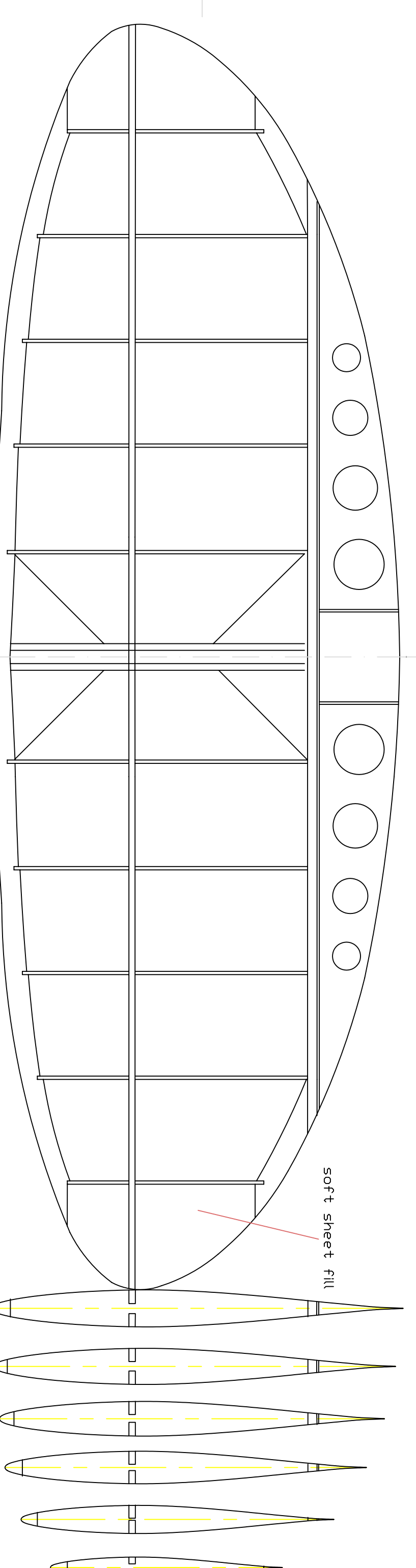


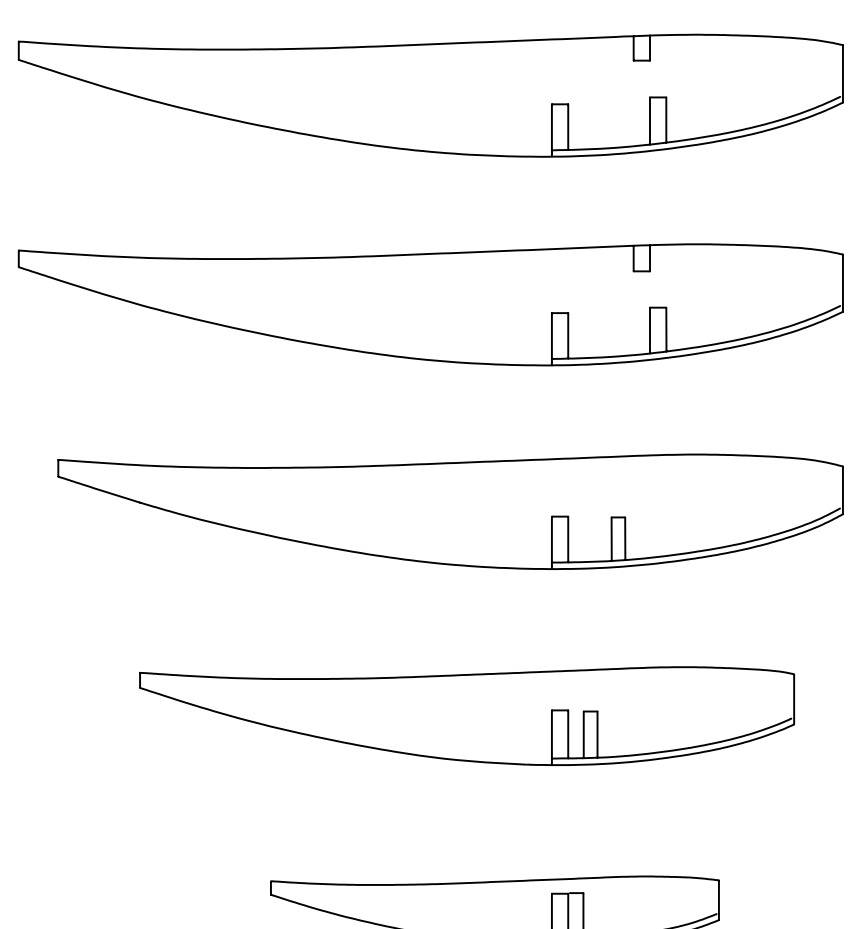
all longersons, uprights, & diagonals 1/4" sq.

3/16" soft balsa



soft sheet fill

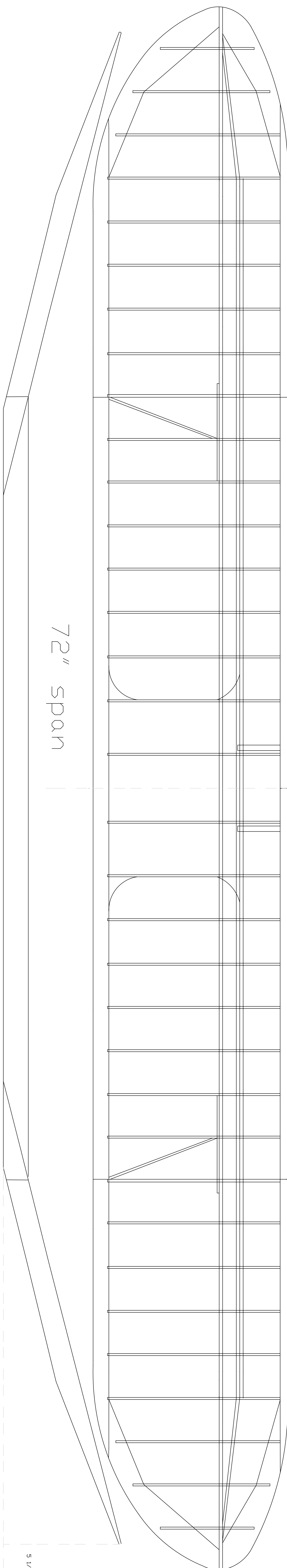
1/16" hard sheet wing & stab ribs



spruce wing and stab spars

Originally designed by WALT GDB
 Re-engineered and drawn by
 Richard Brown, Jr.
 (1980)

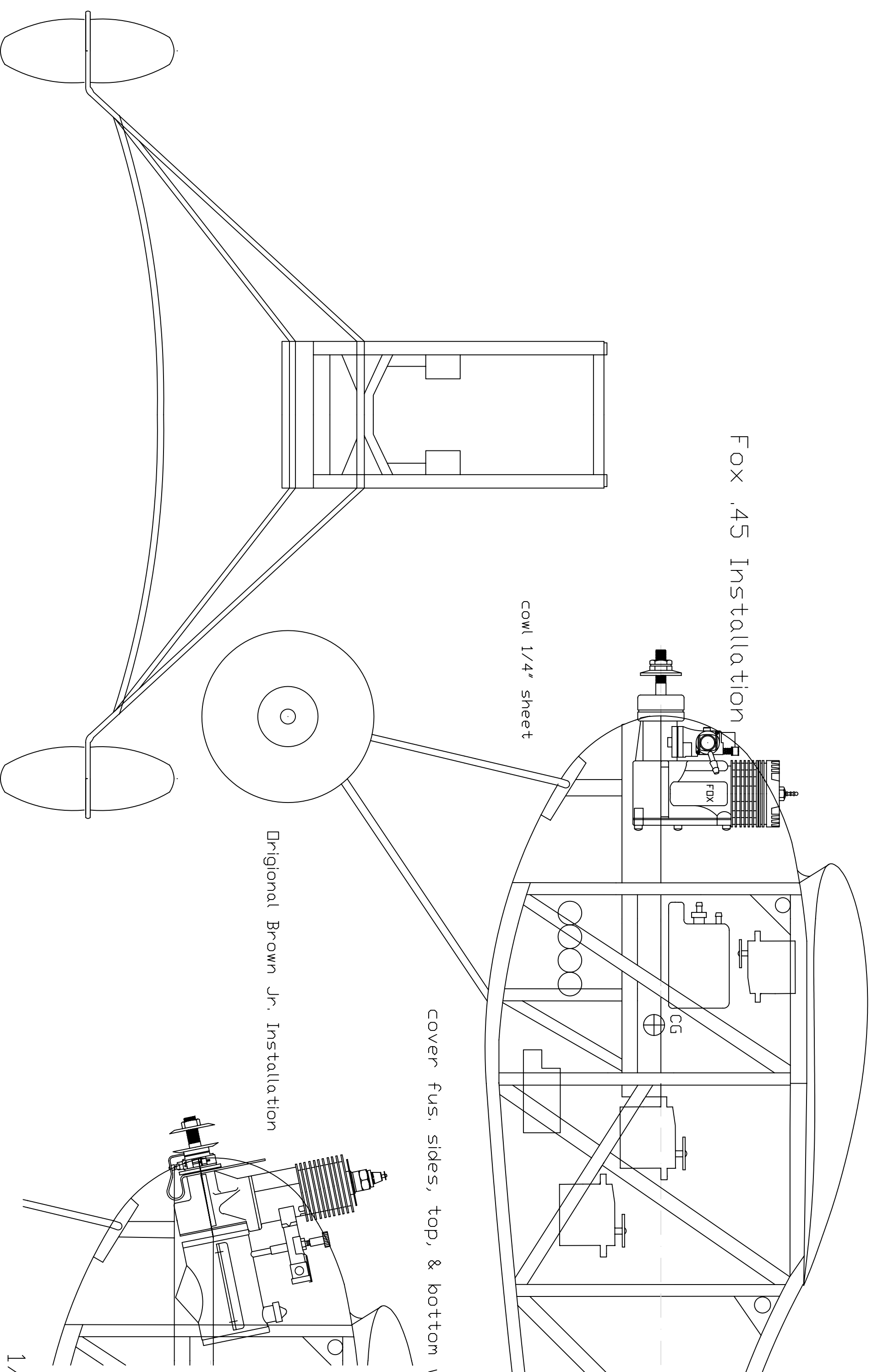
1/16" sheet L.E. & center section



72" span

5 1/2"

Fox .45 Installation



COM 1/4" sheet

cover fus. sides, top, & bottom with 1/16" lite ply

Original Brown Jr. Installation